

SHOREREVIEWS



WINTER 2025

City News and Recreation Catalog

City news	4
Resident resources	8
Community center	14
Recreation programs	23



In this Issue

City news	4
Resident resources	8
Registration information	13
Community center	14
Event rentals	17
Group fitness	21
Adult sports	26
Adult programs	27
Aquatics	34
Kids Corner Preschool	44
Youth programs	46
Youth sports	51
Jobs	58
Recreation areas	59

Events at a Glance

Indoor Market

Community center
fireside lounge

Tuesday, November 19 | 3:30 – 6:30 pm

Saturday, December 14 | 9 am – noon

see page 42 for details

SLICE OF SHOREVIEW COMMITTEE EVENT

Join us & learn about
volunteering!

Tuesday, January 7 | 6 – 7 pm
Community center





SANTA CRUISE DECEMBER 9 6 – 8 PM

see page 40 for details

SANTA'S WORKSHOP DECEMBER 14

see page 41 for details



KID'S SECRET HOLIDAY SHOPPING SPREE

DECEMBER 14 9 AM – NOON

see page 41 for details



NEW YEAR'S EVE PARTY

Bring the whole family out to ring in the new year at the community center with a variety of activities!

December 31 | 5 – 8 pm

see page 42 for details

SWEETHEART DANCE February 7 | 6 - 8 pm

There will be a DJ playing music, crafts, treats and fun for all! So come dressed to impress.

see page 42 for details

Contact Us

City Hall	651-490-4600
Community Center	651-490-4700
Parks and Recreation	651-490-4750
Building Permits	651-490-4683
Code Enforcement	651-490-4689
Forestry	651-490-4665
Human Resources	651-490-4619
Planning and Zoning	651-490-4680
Recycling	651-490-4650
Sewer & Water	651-490-4661
Streets	651-490-4671
Utility Billing	651-490-4630

POLICE & ANIMAL CONTROL

Police protection and animal control are provided by Ramsey County Sheriff's Office.

For non-emergencies	651-767-0640
For emergencies	911

FIRE

Fire protection is provided by the Lake Johanna Fire Department.

For emergencies	911 Dispatch
Non-emergency	651-415-2100

CITY OFFICIALS

Sue Denking, mayor
651-490-4618 | sdenking@shoreviewmn.gov

John Doan, council member
612-424-2527 | jdoan@shoreviewmn.gov

Emy Johnson, council member
763-443-5218 | ejohnson@shoreviewmn.gov

Shelly Myrland, council member
763-291-0185 | smyrland@shoreviewmn.gov

Cory Springhorn, council member
651-403-3422 | cspringhorn@shoreviewmn.gov

Brad Martens, city manager
651-490-4611 | bmartens@shoreviewmn.gov





MEETING BROADCAST SCHEDULE

Channel 16 broadcasts live city council and planning commission meetings every month.

Live Shoreview City Council Meetings

- First and third Monday every month at 7 pm

Live Shoreview Planning Commission Meetings

- Fourth Tuesday of the month at 7 pm

View the full schedule and replay information at shoreviewmn.gov. Council and planning commission meetings can be streamed live at shoreviewmn.gov/agendas.

Like

Follow

Share

@cityofshoreview

ACCESS SHOREVIEW

Sign up to receive our online newsletter that is sent after each meeting with news and events.

Visit bit.ly/AccessShoreview

HONORING DEPARTING COUNCILMEMBER EMY JOHNSON

Emy Johnson will be leaving the Shoreview city council when her term expires at the end of this year, after deciding not to seek re-election. Emy was first elected to the council in 2012, and has served with a passion and deep commitment to the city for the past 12 years. She also was a long-time board member of the economic development authority, including several years as their president, where she played an important leadership role in a number of high profile economic development projects, affordable housing initiatives, and establishing home improvement loan programs for residents. Prior to being a councilmember, Emy was an early supporter and member of the Shoreview Community Foundation Board.

Mayor Sue Denkinger states, "Emy is genuine, thoughtful, clear, and can always be trusted to consider resident concerns and looking at what is best for the community on every issue that comes before the city council. She has shown tremendous leadership over the years in making sure the city is focused on achieving goals and objectives important to the vision we want for Shoreview. One thing I have always respected and appreciated is her public acknowledgement of the contributions of others including city staff, city commissions and committees, and community organizations. I have truly learned so much from her, and I will miss her as a trusted colleague."

In her professional life, Emy currently serves as the Chief Security Officer at Allina Health, and has over 30 years of experience working in the area of corporate security. Mayor Denkinger adds, "she has always been a strong supporter of public safety and keeping our community safe is so important to her."

Emy has been a resident of Shoreview for 24 years, and is married to her husband Scott and has three children; Samantha, Cameron, and Elissa. Her family have been Emy's biggest boosters in supporting her service on the city council, as the following testimony from two of her children demonstrates.

"I have never been more proud to have grown up witnessing my Mom dedicated to serving her community. Watching Shoreview blossom, seeing new business and destinations. As she passes her torch to the next I know her drive for service, and her passion for the City of Shoreview will be missed. But I am certainly excited to have her back!" – daughter Elissa

"I'm proud to say my mother's dedication and drive to support growth and development will leave a lasting mark on Shoreview, setting things up for future generations of residents." – son Cameron



Says long-time former mayor Sandy Martin, “Emy has contributed to our city in countless ways with her strong leadership skills and wise understanding of community values. Through the many meetings during the decade we shared on the council, I was always impressed by her ability to bring balance to contentious issues and demonstrate understanding for the importance of neighborhood issues. Throughout her impressive career challenges, Emy always created time for our community!”

We thank you, Councilmember Emy Johnson, for your many years of dedicated service to Shoreview and your many lasting contributions in making this community a better place.

Emy Johnson, in her own words:

As I reflect on the last twelve years being a councilmember in the wonderful community of Shoreview, I’m both humbled and honored to have had the chance to serve my community.

I recall the day when I brought the topic of me possibly running a campaign for councilmember, at our family dinner table. The look in the eyes of my husband and children was priceless. The immediate question. “Why?”. My response was focused on ensuring my children understood the importance of giving back, making a difference in one’s community and being focused on the common good.

Since that very day, I have seen the value of being a part of the leadership decisions that have affected people’s daily lives in the City of Shoreview. From housing options, long range planning, public safety, city services, well-being of residents and local business the list could go on. It has truly been a rewarding experience.

As I pass the seat on to the next councilmember I remain confident and optimistic that the City of Shoreview is absolutely the best place to live, raise your family and do business in the state of Minnesota.

Thank you for the chance to serve as your councilmember.

With gratitude,

Emy



2025 BUDGET MAINTAINS ESSENTIAL SERVICES

At its September 16, 2024 meeting, the city council adopted a preliminary 2025 tax levy of \$17,087,663. This is a 6.63% increase above the 2024 tax levy.

The preliminary tax levy and corresponding capital budget are designed to maintain essential services and programs including:

- Public safety (Ramsey County Sheriff and Lake Johanna Fire Department)
- Maintaining existing services, programs, and infrastructure
- Park maintenance and improvements
- Building inspections
- Community and economic development
- Community center operations and recreation programs

Some of the reasons for the levy increase include increased police and fire costs, personnel costs, and capital asset replacement levies.

2025 BUDGET HEARING

Monday, December 2 at 7 PM

RENTAL LICENSES

All rental licenses in Shoreview expire on December 31.

Applications for a new license must be submitted before January 1.

Renew online or in person. Contact 651-490-4680 if you have any questions.



SHOREVIEW DOWN PAYMENT ASSISTANCE PROGRAM FOR NEW HOME BUYERS

New home buyers in Shoreview can qualify for up to \$30,000 in down payment assistance. Low interest loans are available for homes under \$425,000.

Amortizing: For buyers with incomes below 120% of the Area Median Income, you can get up to \$30,000, with low interest, paid back in monthly payments.

Due on Sale: For buyers whose incomes are at or below 80% of the Area Median Income, up to \$20,000 is available in a due-on-sale loan with 0% interest and no payments, paid back when the home is sold, transferred, or no longer owner-occupied. Additional funds, up to a combined total of \$30,000 may be used.

- Applies to single-family homes, townhomes, duplexes, and condominiums within Shoreview city limits.
- Property must be owner-occupied as a primary residence.
- Purchase price may not exceed \$425,000.
- Buyers must attend homebuyer education.
- Buyer may not have owned a home within 3 years.
- \$25 application fee
- There must be a minimum contribution of 3% of the purchase price paid by or on behalf of the borrower.

NeighborWorks Home Partners - 651-292-8719 or downpayment@nwhomepartners.org.



Thank you

Adopt-a-Trail Trail volunteers!

- Progressive Insurance
- The Menning Family
- Kelli Damlo
- Jima Rahimi
- Shoreview Bikeways and Trails Committee
- Girl Scout Troop #57465
– Chippewa Middle School
- Shoreview Community Foundation
- Shoreview Community Garden Club
- Blechert/Aas Family
- Lionsgate Academy School
- Sara Larson and Kent Roper
- Swisher Family and Friends
- Marco & Lindsey Esnaola
- The Walch Family
- Gradient Financial Group LLC
- Girl Scout Troop #58353
- Oak Hill Montessori
- The Vant-Johnson Family

Shoreview volunteers!

- Bikeways and trails committee
- Economic development authority
- Economic development commission
- Environmental quality committee
- Gallery 96 Art Center
- Human rights commission
- Parks and recreation commission
- Planning commission
- Public safety committee
- Shoreview Community Foundation
- Shoreview-Einhausen Sister City Association
- Shoreview Historical Society
- Shoreview Northern Lights Variety band
- Slice of Shoreview Coordinating Committee
- Snail Lake Improvement District Board

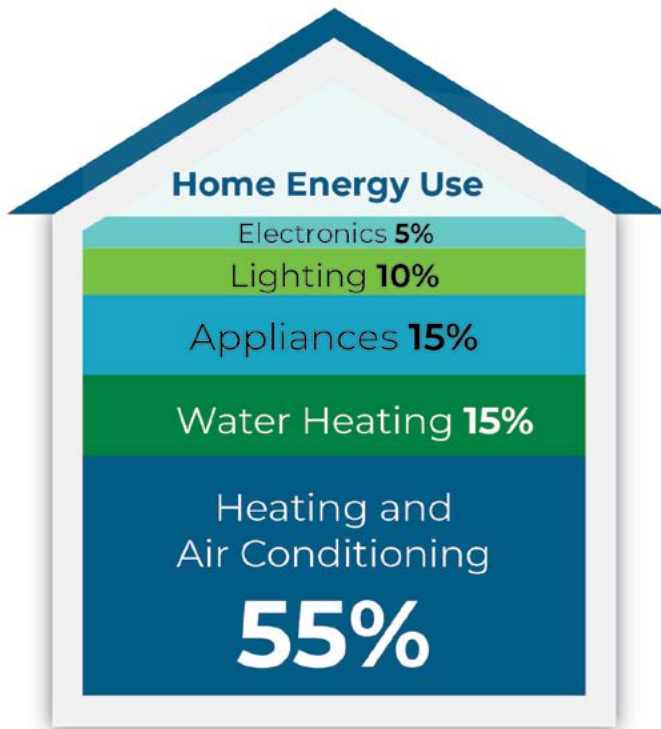
Trails are available to adopt!
Visit shoreviewmn.gov/adoptatrail



Resident Resources



PARTNERS IN ENERGY An Xcel Energy Community Collaboration



MN Dept. of Commerce Home Energy Guide

PARTNERS IN ENERGY

Shoreview worked with Xcel Energy's Partners in Energy program as a next step in Shoreview's sustainable future. The program joined community members, city staff, and the energy utility to develop an Energy Action Plan which was approved by city council in August 2024. This plan has goals of saving energy and money, increasing renewable energy, and reducing fossil fuel use. The focus areas for these goals are centered around informing and helping residents, businesses, and the city to help meet these goals. The program connects each of these sectors of the community with different energy programs and opportunities from Xcel Energy.

SAVE ENERGY AND MONEY!

With almost 12,000 housing units - 90% of which were built before 2000 - Shoreview has significant potential for residential energy efficiency improvements. Weatherization refers to a broad range of small or large improvements we can make to our homes that result in energy efficiency and other benefits. You save energy and money through reducing the amount of heating, cooling, and electricity needed. Many improvements can be DIY projects such as caulking around windows, insulating pipes, and adding weatherstripping. Other projects may require a professional such as adding home insulation or improving windows and doors. Another great feature of weatherization is that often, the more you invest, the more you get back, and continue to save over the long term.

Start with a home energy assessment - Sign up for a visit from the Home Energy Squad to learn from energy experts and get a personalized assessment about your home and next steps for energy efficiency projects. Visit xcelenergy.com/HomeEnergySquad or call 651-328-6220.

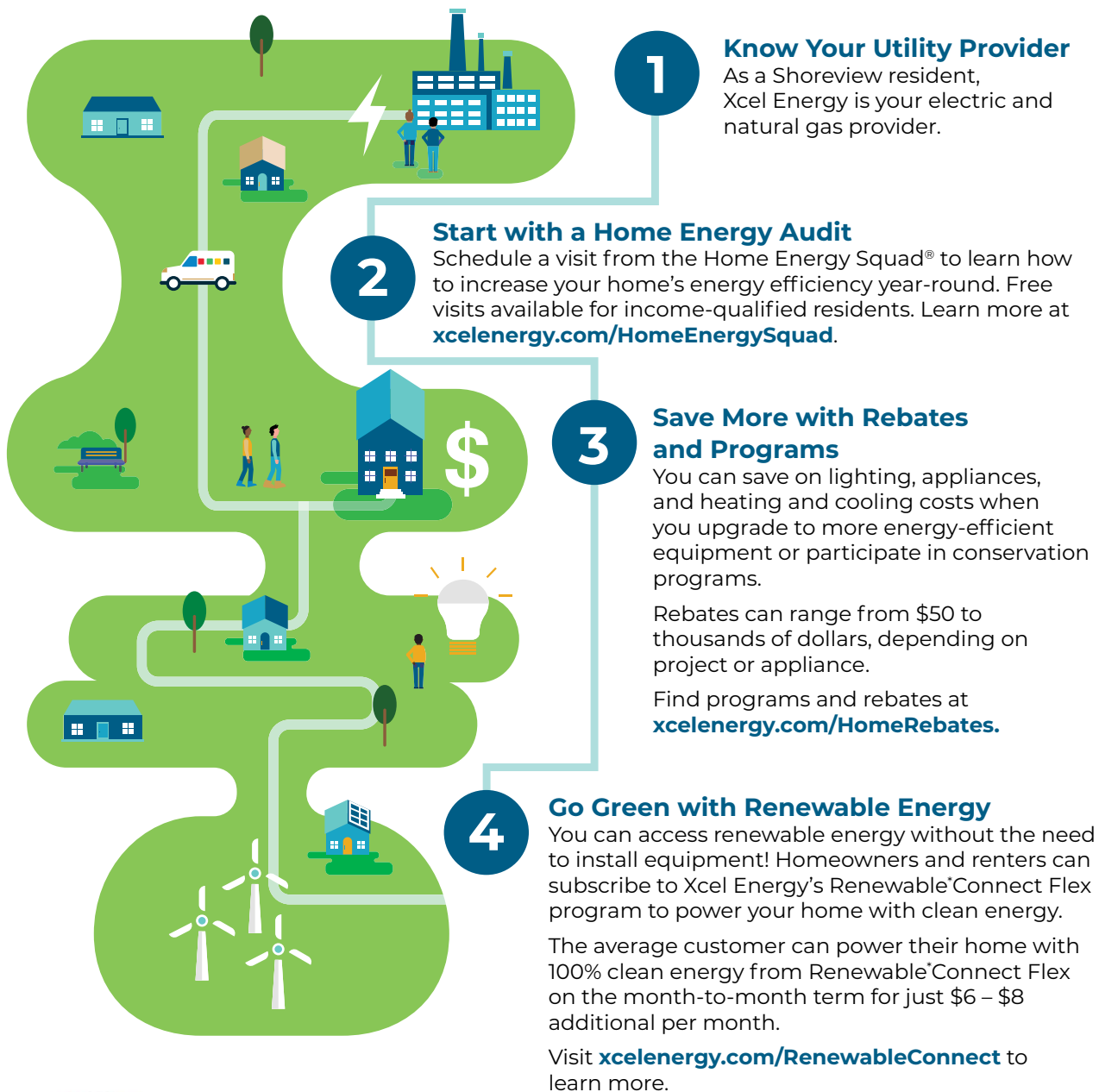


Visit xcelenergy.com/HomeRebates to find out about programs and rebates.





Residential Guide to Clean Energy & Savings



Shoreview and Xcel Energy are pleased to work together to achieve our community energy goals.





GREEN COMMUNITY AWARDS

The 2024 Green Community Award winners have one thing in common: they want to be role models to inspire others to reduce their impact on the environment.

Their homes demonstrate to us the benefits and ease of installing solar power or native habitats.

For their commitment to environmental benefits and public awareness, the 2024 Green Community Awards were presented to:

Heather Vassilev
Bucher Ave

Ever since she moved into her house 20 years ago, Heather has been replacing her turf grass lawn with native plants, and a few cultivars. Now the only grass in the front and side yards is around the edges.

Among the benefits: native plants require little watering, they attract pollinators, and they don't require chemicals. That last point is especially important for their puppy. The plants also lead to conversations as neighbors stop during their walks to ask about how they might be able to do something similar.

Thomas Warner
Elaine Avenue

Tom works advising businesses on sustainability in their operations, so he figured he better incorporate sustainability into his home. He started by installing 16 solar panels on his home in 2020. Since then he has added a Polestar EV and battery powered lawn equipment. He also switched all his lights to LEDs and installed smart outlets to reduce energy use. He realizes further saving thanks to a programmable thermostat and energy efficient replacement windows.

Both Heather and Tom say they're not done. Each is planning additional ways to reduce their impact. And their advice to us is to get started now and take your improvements in steps.



DO YOU HAVE AN ASH TREE ON YOUR PROPERTY?

Take action now - make a plan for removal of your ash tree now if you have not been treating it.

Property owners are being asked to remove untreated ash trees on private property by the end of 2025. Ash trees are being infested by emerald ash borer (EAB), an invasive insect that attacks and kills ash trees native to Minnesota. Treating ash trees with an insecticide trunk injection is effective when it is started early as a preventative strategy. Many trees that have not already been treated are too heavily infested for treatment at this time.

Contact licensed tree companies for estimates on tree removal. The city does not have funding to assist with tree removals on private property .

TIPS FOR HIRING A TREE CARE COMPANY

- Check the list of licensed tree companies: shoreviewmn.gov/tree-trimmers
- Get more than one estimate from licensed companies
- Don't pay for work in advance
- Ask about the company's certifications and experience
- Make sure you understand what work is included in the estimate

Questions? Visit shoreviewmn.gov/trees

WHAT TO LOOK FOR IN EAB INFESTED ASH TREES



The outer canopy will die back and sprouts may grow close to trunk



There is an increase in woodpecker activity and bark will fall off infested ash trees



Tunnels from larval feeding may be visible after bark splits





Visit Ramsey County's A to Z Disposal Guide for additional disposal options.

HOLIDAY RECYCLING

The holidays can be full of single-use items. When thinking of holiday gatherings and gifts, consider ways to reuse and cut down on waste. For items that you're throwing away, make sure you know where they go.

- **WRAPPING**

Wrapping paper - wrapping and tissue paper goes in the trash, not the recycling bin
Use and save gift bags, tissue paper, and bows to reuse more than once

- **BATTERIES**

Toys and holiday cards with batteries often cannot be thrown in the trash. Lithium batteries and many rechargeable batteries can cause fires and need to be disposed of at a household hazardous waste location.

- **CARDBOARD**

Flatten boxes and put them in your recycling cart. If you have more cardboard than can fit in your cart, drop it off at Waste Management, 309 Como Ave, St. Paul or contact Republic Services at 320-252-9608 to request an additional recycling cart.

- **TREE DISPOSAL**

Done with your evergreen tree? Bring your holiday/Christmas tree to a Ramsey County yard waste site or the Maintenance center. Remove all lights, wires, and ornaments. No wreaths or boughs accepted. Maintenance Center, 4615 Victoria St N, Monday-Friday, 7 am-3 pm.

- **STRING LIGHTS**

LED holiday lights cannot be thrown in the trash and can be taken to the household hazardous waste facility (5 Empire Drive, St. Paul)

- Non-LED string lights may be put in the trash



UPGRADE YOUR IRRIGATION SYSTEM OR TOILET!



Rebate on WaterSense certified products

Covers 75% of the cost

Up to \$150

Learn more and apply today at:

shoreviewmn.gov/watersmart



WINTER WEATHER TIPS

READY TO SHOVEL?

- Clear snow around the nearest fire hydrant and storm sewer
- Put carts out at the end of your driveway or yard, not in the street, on garbage and recycling day
- Shovel snow onto your yard, not into the street
- Plows work overnight and during the day - don't park on the street until it's been cleared
- Street parking is not permitted on city streets from 2-5 am

REDUCING SALT USE AT HOME

Keep walkways and driveways safe while using salt effectively!

Did you know? Salt pollutes water and can harm plants, animals, soil, and drinking water. Just a teaspoon of road salt can pollute up to five gallons of water. Only apply salt when needed.

- **Shovel first:** Salt is more effective and less is needed when used after clearing snow
- **Choose the right product** – salt won't work if the pavement is below 15 degrees
- **Spread salt across pavement** – more salt doesn't equal more melting. A standard coffee-sized cup of salt is often enough to cover a typical driveway
- **Clean up:** Salt on dry pavement that is not doing its job, can be swept up to use again



CITY REDUCING SALT USE

Shoreview uses best management practices for salt and other deicers to balance the priorities of safety with the negative impacts to water quality, infrastructure, plants, soil, pets, and wildlife. City salting operations include:

- **Trained staff** - city crews are trained through the Smart Salting program from the MN Pollution Control Agency on best practices for reducing salt use while maintaining safety
- **Calibrate equipment** - trucks are calibrated to correctly apply the rate that is set
- **Pre-treat before storms** - crews apply a brine solution to pavement before a storm comes to prevent formation of ice
- **Apply salt and adjust treatment based on conditions** - utilize salting-rate guidelines and brine, to ensure the proper amount of salt for the weather conditions.
- **Monitor usage** - staff monitor salt use and analyze practices for future improvement



DO YOU LIVE IN AN ASSOCIATION OR APARTMENT BUILDING?

If a property management company does the snow and ice removal where you live, encourage them to attend a Smart Salting training from the Minnesota Pollution Control Agency. Use the QR Code to learn how to maintain safety, lower costs, reduce damage caused by salt, and reduce water pollution in an upcoming training.



Community Organizations



SHOREVIEW HISTORICAL SOCIETY

Lepak/Larson House Tours

Tours began at the Lepak/Larson home this fall. Visitors will be able to tour the main floor which has been transformed to a 1930's era farmhouse. The home was built in 1896 and is located at 1170 Lepak Court, near County Road I and Lexington Avenue.

Built for August and Henriette Lepak, the homestead was constructed of Chaska bricks brought by train from the west metro and carted from Cardigan Junction, located 5 miles to the southeast. The Lepak's had three children and farmed the 130-acre property until 1908. Six owners came and went until Art and Edna Larson purchased it in 1935 and stayed until their deaths. The farm originally had a barn, chicken coop, granary and garage. Over the years, Larson sold portions of the land. Turtle Lake Elementary and the Lake Johanna Fire Department Station No. 2 stand on the original farmland.

The home is part of Heritage Park and the restored original Guerin gas station is also on the site.

The main level is handicapped-accessible. The upper level will not be part of the tour.

For more information, visit shoreviewhistoricalsociety.org

Join our SHS Facebook Page "Friends of Shoreview History"

Daily postings about people, places and events in Shoreview.



*Celebrating 30 years of music:
1994-2024*

Shoreview
**NORTHERN LIGHTS
VARIETY BAND**

Winter Winds

Saturday, December 14, 2024, at 7pm
Benson Great Hall, Bethel University

Tickets are \$20 and available at:

- www.snlvb.com
- Shoreview City Hall
- Tickets.bethel.edu
- Benson Great Hall Ticket Office
- At the Door

Special Guest Choir:

Dr. Michael Scott, Music Director

 Calvary Church





PARKS & RECREATION



Register for winter programs in CivicRec!

shoreviewmn.gov

Registration Schedule

Registration begins at 8 am

WINTER REGISTRATION SCHEDULE

- Tuesday, December 3:** Shoreview residents
- Thursday, December 5:** Annual community center members
- Friday, December 6:** General registration

CONTACT US

Parks & Rec
 Monday – Friday: 8 am – 4:30 pm
 651-490-4750
recreation@shoreviewmn.gov



WEATHER UPDATES

For weather updates call 651-490-4765

- Visit shoreviewmn.gov/parks-rec
- Click "register online"
- Select Login/Create account on your desktop or mobile device
- Log in to your SVMN account*
- *Community center members account created at sign up*

POLICIES

- Five days notice required for cancellations
- Cancellation fee \$5 – \$10 depending on the program
- No refunds for missed classes
- Scholarships available for Shoreview residents; restrictions apply



Membership Rates & Benefits



MEMBERSHIP FEES

Annual Membership¹ (with one year membership agreement)

	FAMILY	DUAL	ADULT	YOUTH/SENIOR
Rate	\$1,010	\$860	\$600	\$480
Shoreview resident*	\$740	\$660	\$440	\$370
Military*	\$930	\$790	\$545	\$445
Military resident*	\$700	\$620	\$415	\$350

Annual Membership Billed Monthly¹

(with one year membership agreement)

	FAMILY	DUAL	ADULT	YOUTH/SENIOR
Rate	\$91.75	\$77.75	\$54.75	\$48.25
Shoreview Resident*	\$71.50	\$63.25	\$42.25	\$35.75
Military*	\$83.50	\$71	\$50	\$44.25
Military Resident*	\$67	\$59	\$40	\$33

¹ \$100 early cancellation fee. * Sales tax is included in price.

Seasonal Membership (Three consecutive months)

	FAMILY	DUAL	ADULT	YOUTH/SENIOR
Rate	\$377	\$357	\$252	\$195
Shoreview resident*	\$282	\$260	\$184	\$153

* ID required for military and resident rates.

Military rate not available for seasonal memberships

- Seniors: 65 & older
- Youth: 17 & younger
- Dual membership is two people living in the same household. Family is two adults plus dependent children under 23 living in same household. Proof of dual and family member qualification is required.
- Fees are subject to change.
- We accept payment by any major debit/credit card.

Annual membership includes unlimited use of:

- Fitness center (14 years and older)
- Shoreview waterpark, including tropics and bamboo bay
- Indoor playground (Ages 1 – 10)
- Indoor track (14 years and older)
- Basketball courts
- Whirlpool (18 years and older)
- Members registration day and the ShoreViews home mailing
- Member only waterpark hours - 12 pm – 1:30 pm on Saturdays

December Membership Special

\$40 one month membership (per person, includes tax)

On sale from December 1 - 31

- membership starts the day you sign up
- only able to purchase one month
- deadline December 31 by 4 pm





General Information and Hours

Hours and rates are subject to change. Visit shoreviewmn.gov for the latest information.

DAILY RATES:

All guests must pay admission; this includes non-swimming guests and adults in the playground and gymnasium. Children 12 and under must be supervised by an adult while in the community center.

DAILY PASS	RATE	SHOREVIEW RESIDENT	MILITARY	MILITARY RESIDENT
Adult (18 and older)	\$14.00	\$10.50	\$11.25	\$9.75
Youth (1 to 17)	\$12.50	\$9.25	n/a	n/a
Seniors (65 and older)	\$12.50	\$9.25	\$10.75	\$8.75

INDOOR PLAYGROUND ONLY	RATE	SHOREVIEW RESIDENT
All visitors	\$6.75	\$6.25

All playground visitors must pay admission; this includes supervising adults.

COUPON BOOKS (10 DAILY PASSES)	RATE	SHOREVIEW RESIDENT
Adult	\$126.00	\$94.50
Youth/Senior	\$112.50	\$83.25
Indoor Playground	\$60.75	\$56.25

SENIOR TRACK DISCOUNT (65 & OLDER)	RATE	SHOREVIEW RESIDENT
Track use only		
Punch card (includes 10 visits)	\$56.00	\$46.00

Fees are subject to change. We accept any major debit/credit card.

All rates above include sales tax. Visit shoreviewmn.gov for updates.



KIDS CARE

Child care is available for community center customers.

See page 24 for details.

POOL HOURS

The waterparks, lap swim, and open swim are available at various times throughout the week.

See the service desk for a schedule or visit shoreviewmn.gov/waterpark.



DROP-IN VOLLEYBALL

Sunday, 8 – 10 am
Tuesday & Thursday, 12 – 1 pm

No volleyball on Nov 28,
Dec 26 and 31.



Building Hours



CALL FOR MORE INFORMATION

Community center	651-490-4700
Recreation programs (classes)	651-490-4750
Rental information	651-490-4790
Pool rental information	651-490-4780
City information	651-490-4600

shoreviewcommunitycenter.com

HOURS

Children 12 & under must be supervised by an adult while in the community center.

DAYS	COMMUNITY CENTER	PLAYGROUND
Monday – Friday	5 am – 9 pm	8 am – 8 pm
Saturday	6 am – 8 pm	noon – 7 pm
Sunday	6 am – 8 pm	noon – 6 pm

HOLIDAY HOURS

DATES	COMMUNITY CENTER	GYM, WALKING TRACK	PLAYGROUND
December 24	5 am – noon	5 am – noon	8 am – noon
December 25	closed	closed	closed
December 31	5 am – 4 pm	5 am – 1 pm	8 am – 4 pm
January 1	8 am – 9 pm	8 am – 9 pm	8 am – 8 pm

POOL HOLIDAY HOURS

DATES	TROPICS	BAMBOO BAY
December 24	closed	9 – 11:30 am
December 25	closed	closed
December 31	noon – 3 pm	10 am – 3 pm
January 1	noon – 7 pm	noon – 4 pm

View the full pool schedule at: shoreviewmn.gov/waterpark



Summer Saturday Package

Book your
2025
event now



Package includes:

- Shoreview room & deck
- Haffeman pavilion
- Garden space

Saturdays, May-September

Shoreview resident \$2,100

Non-residents \$2,310

\$1,000 refundable reservation deposit

SHOREVIEW ROOM

- Maximum capacity of 300 people
- Choose your own licensed caterer
- Alcohol service available with in-house provider
- \$1,000 refundable reservation deposit

DAYS	RATE	SHOREVIEW RESIDENT
Sun – Thurs	\$1,050	\$895
Friday	\$1,540	\$1,365
Saturday	\$1,910	\$1,680

WEDELL COMMUNITY ROOM

- Maximum capacity of 250 people
- Choose your own licensed caterer
- Alcohol service available with in-house provider
- \$1,000 refundable reservation deposit

DAYS	RATE	SHOREVIEW RESIDENT
Sun – Thurs	\$750	\$620
Friday	\$1,160	\$995
Saturday	\$1,445	\$1,265

HALF COMMUNITY ROOM

- Available Sunday – Thursday
- Maximum capacity of 100 people
- \$500 refundable reservation deposit

DAYS	RATE	SHOREVIEW RESIDENT
Sun – Thurs	\$445	\$410

*Additional fees may apply
Fees are subject to change*



Exclusive Parties



BAMBOO BAY EXCLUSIVE

- Exclusive access to Bamboo Bay waterpark and cabanas
- Admission included for up to 50 people
- 30 days notice required
- \$175 refundable damage deposit

Day	Time
Friday	5 – 7:30 pm
Sunday	9 – 11:30 am

Friday Bamboo Bay Exclusive parties have the option of adding on use of Tropics Waterpark for an additional \$125

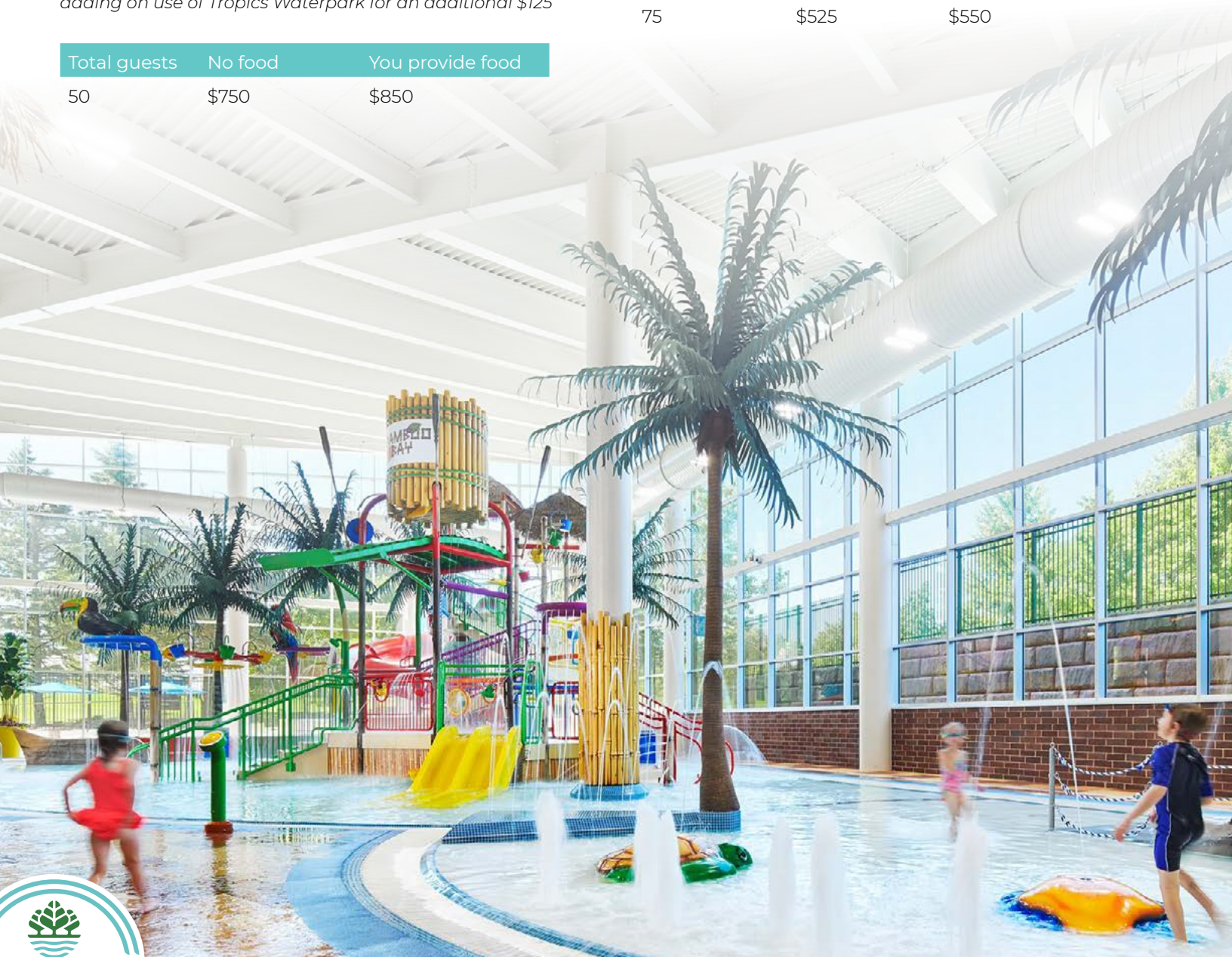
Total guests	No food	You provide food
50	\$750	\$850

INDOOR PLAYGROUND EXCLUSIVE

- Exclusive access to the Indoor Tropical Adventure playground and party space
- Admission included for up to 75 people, table seating for 12 guests
- Bring your own food and cake
- \$100 refundable damage deposit

Days	Time
Saturday & Sunday	9 am – noon

Total guests	Rate	SV Res
75	\$525	\$550



POOLSIDE CABANA

- Semi-private space, located in Bamboo Bay waterpark
- Seating for 16 guests
- Includes 16 admission wristbands (Sat – Sun)
- \$100 refundable damage deposit

Day	Duration	Rate	Shoreview resident
Sat – Sun	3 hours	\$450	\$400
Tues/Thurs*	2 hours	\$240	\$200

*Bamboo Bay access only

POOLSIDE PARTY ROOM

- Private room, located downstairs
- Seating for 32 guests
- Includes 32 admission wristbands
- \$100 refundable damage deposit

Day	Duration	Rate	Shoreview resident
Sat	3 hours	\$625	\$575
Fri & Sun	2 hours	\$565	\$515

PLAYGROUND PARTY AREA

- Semi-private space, located in playground
- Seating for 12 guests
- Includes 12 admission wristbands (playground-only)
- \$100 refundable damage deposit

Day	Duration	Rate	Shoreview resident
Any	3 hours	\$235	\$215

ACTIVITY ROOM

- Private room, located upstairs
- Large windows with natural lighting
- Seating for 36 guests
- Includes 24 admission wristbands (Fri – Sun)
- Adjacent rooms available for extra fee
- \$100 refundable damage deposit

Day	Duration	Rate	Shoreview resident
Mon – Thurs	2 hours	\$100	\$90
Fri	2 hours	\$325	\$275
Sat – Sun	3 hours	\$500	\$450

MEETING ROOMS 1 – 3

- Private room, located upstairs
- Seating for 20 guests
- Includes 16 admission wristbands (Fri – Sun)
- Adjacent rooms available for extra fee
- \$100 refundable damage deposit

Day	Duration	Rate	Shoreview resident
Mon – Thurs	2 hours	\$75	\$60
Fri – Sun	3 hours	\$350	\$300

MEETING ROOM 4

- Private room, located upstairs
- Seating for 20 guests
- Not available for birthday parties
- \$100 refundable damage deposit

Day	Duration	Rate	Shoreview resident
Sun – Fri	2 hours	\$100	\$90

All weekday rentals that fall on a Mounds View no school day are weekend rental prices and times.



Admission is included with birthday party options. Visit shoreviewmn.gov to learn more or call 651-490-4790 to book your party.



HAFFEMAN PAVILION & GARDEN SPACE

- Permanent picnic tables seat up to 100 guests
- Located in Commons Park, next to the community center
- Indoor room with air conditioning, restrooms, and fireplace and additional seating for up to 30 guests
- Decorative pond with fountain and benches
- Ideal space for ceremonies, graduation parties, and family reunions
- \$500 refundable damage deposit

Days	Month	Rate	SV Resident
Fri or Sun	May – Sept	\$575	\$525
Mon – Sun	Mar, Apr, Oct, Nov	\$460	\$420

PARK SHELTERS

- Small shelters are available at most Shoreview parks. The daily rental fee is \$65.

Learn more at shoreviewmn.gov.

Park shelter	Capacity
Bucher	4 tables; up to 24 people
Lake Judy	2 tables; up to 15 people
McCullough	2 tables; up to 15 people
Shamrock	5 tables; up to 40 people
Sitzer	4 tables; up to 32 people
Commons	4 tables; up to 24 people

The following parks are owned and operated by Ramsey County Parks & Recreation.

For more information call 651-748-2500 or visit ramseycounty.us.

- Island Lake County Park
- Lake Owasso County Park
- Snail Lake County Park
- Turtle Lake County Park

Additional fees may apply — fees are subject to change



Group Fitness



GROUP X CARDS

- Good for all fitness classes
- Class schedule is available online and at the community center
- Purchase at the parks & recreation desk or by phone at 651-490-4750 during office hours (Monday – Friday, 8 am – 4:30 pm)
- You can reload your Group X Card in person or by phone at 651-490-4750
- Go online to shoreviewmn.gov/fitness to reserve your spot using SignUpGenius today!

QUANTITY	REGULAR	ANNUAL MEMBER	RESIDENT	RESIDENT ANNUAL MEMBER
5 Classes	\$56	\$39	\$50	\$35
10 Classes	\$107	\$75	\$98	\$69
25 Classes	\$263	\$184	\$239	\$167
50 Classes	\$503	\$352	\$456	\$319

- One Group X Card allowed per person
- Cards are non-refundable and non-transferrable
- Member discount applies to annual memberships only
One-time drop-in passes are available at the lower-level service desk the day of class
- SeniorFIT and Aqua Fitness do not need reservations

GROUP FITNESS CLASSES

View schedules online at shoreviewmn.gov/fitness

- Please check class schedule at the beginning of the month
- Refunds are issued for medical reasons only
- Membership is not required
- SeniorFIT classes are free with paid annual senior membership
- All classes are 50 to 60 minutes unless otherwise noted
- Classes with three participants or fewer are subject to change or cancellation
- Group fitness classes are great for all levels
- Find out which classes best suit your needs by calling the fitness coordinator at 651-490-4768

Call for information: [651-490-4750](tel:651-490-4750)

Group Fitness drop-in rate: Regular: \$12.50, SV Res: \$11.50



KIDS CARE

Kids Care provides a stimulating and safe environment for children 6 months to 12 years of age. Kids can explore and interact with other children while you enjoy the community center's amenities.

- First come, first served
- Max 2 hour stay (must stay in building)
- Kids Care phone number: 651-490-4763

HOURS

Monday – Saturday: 8 am – 12:30 pm

Monday – Thursday: 4 – 8 pm

Friday: 4 – 7 pm

If there are no kids in the room 30 minutes prior to close, Kids Care will close early.

CLOSED

November 28

December 24, 25, & 31, and January 1

Cost: To use Kids Care you must purchase a punch card or pay a \$3 drop-in fee at the service desk. \$2 per hour rate for punch cards. Punch cards are non-refundable

Where to buy: the parks and recreation desk, community center sales office, or online

Ages: 6 months to 12 years old

Punch Card:

10 hours: \$20

25 hours: \$50

50 hours: \$100



GROUP FITNESS CLASSES

- 60/40
- Barre principle
- The resistance workout
- Step cardio
- Dance jam
- Fundamental combo
- H.I.I.T. (High Intensity Interval Training)
- The Groove
- Kettlebell training
- Power strength
- Cycle rave
- Cycle training
- Total body workout
- Power pump
- Cardio kickboxing
- Zumba®

WATER FITNESS CLASSES

All water classes are held in the pool.

- The pool is between 3 1/2 and 4 1/2 feet deep
- All fitness levels are welcome
- The pool temperature is between 84 – 86 degrees
 - Aqua fit
 - SeniorFIT aqua exercise

MIND/BODY CLASSES

- Stretch and balance
- Yin/restorative yoga
- Yoga basics
- Hot yoga — Class temp range is 80 – 90 degrees.
- Fitness Pilates
- Power yoga
- Yoga/Pilates fusion
- Yoga sculpt

Scan the code to view SeniorFIT class descriptions or visit online at shoreviewmn.gov.



SENIORFIT CLASSES

SeniorFIT classes are free to annual senior members. If you are not an annual senior member, you may purchase a Group X Card or a drop-in pass. See page 23 for Group X Card information. All fitness levels are welcome.

- SeniorFIT chair yoga
- SeniorFIT strength training
- SeniorFIT aqua exercise
- SeniorFIT let's move



Scan the code to view SeniorFIT class descriptions or visit online at shoreviewmn.gov

WINTER SESSION : JAN 2 – MARCH 31

Registration is not required.

CLASS/INSTRUCTOR	DAY	TIME
Chair yoga: Beth	Monday	8:30 am
Aqua exercise: Fran	Monday	9 am
Strength training: Nancy/Deb	Tuesday	8:30 am
Chair yoga: Scott	Tuesday	2 pm
Chair yoga: Gretchen	Wednesday	8:30 am
Aqua exercise: Fran	Wednesday	9 am
Let's move: Nancy/Perry	Thursday	8:30 am
Strength training: Denise	Friday	8:30 am
Chair Yoga: Scott	Friday	9:30 am

COMMUNITY CENTER MEMBER EQUIPMENT ORIENTATION (INDIVIDUAL OR GROUP)

Get introduced to fitness center equipment and learn how to utilize strength and cardio equipment safely. The schedule and sign-up sheet for equipment orientations is located at the fitness center desk.

The first orientation for members ages 14+ is free. For more information call 651-490-4768.

AGES	COST
14+	Free to members



PERSONAL TRAINING

- Personal training comes in packages of 3, 6 and 12 sessions
- All sessions expire one year from the date of purchase
- Trainers help you set realistic goals and determine safe strategies to achieve them
- Trainers will customize a program to fit your ability and health
- Trainers monitor progress and adapt your routine for consistent improvement
- Learn fitness principles and correct form to aid in progress and prevent injuries

INDIVIDUAL PERSONAL TRAINING

SESSIONS	REGULAR	RESIDENT
3	\$250	\$226
6	\$474	\$426
12	\$897	\$808
24	\$1,697	\$1,489

BUDDY PERSONAL TRAINING

Two participants train together and each pay the fee below.

SESSIONS	REGULAR	RESIDENT
3	\$192	\$172
6	\$357	\$320
12	\$675	\$608



Adult Sports



DROP-IN PICKLEBALL

community center

8 – 10 am

SPECIAL DATES:

Nov 25 – 27, 29, & Dec 23 – 30



DROP-IN PICKLEBALL

All are welcome! You do not need to be a member of the Shoreview Area Pickleball Club for indoor drop-in play.

Pickleball punch card: cost \$50 (11 visits)

- Punch cards are good for both drop-in locations.
- Available for purchase at the parks and recreation office

Office hours: Monday – Friday, 8 am – 4:30 pm

AGES	DATE & TIME	COST	LOCATION
18+	Mon – Fri, Oct 7 – April 26* 8 – 11 am	FREE to SCC members, \$5 for non-members	community center
18+	Wednesdays, Oct 23 – Dec 18** 5:30 – 9:30 pm	\$5 per person (cash only)	Island Lake Elementary

*No drop-in pickleball: Nov 28, Dec 31, Jan 1, 20, Feb 17

** No pickleball: Nov 27



Valentine's Dance & Desserts

Friday, Feb 14

1:30 - 3:30 pm

\$22, register by Feb 3

Community center

- ♥ Come by yourself or with a friend
- ♥ Live music from the Legendary Percolators
- ♥ Desserts
- ♥ Easy ballroom dance instruction with the top dance instructor in the nation



BALLROOM DANCE

Learn basic ballroom dance patterns to popular party & wedding music. We will focus on footwork, timing and dancing with a partner. No partner needed. Taught by renowned instructor Amy Hanson from Ballroom by Amy.

Location: community center

Registration deadline: one week before class

AGE	DATE & TIME	COST
16+	Tues, Jan 7 – Feb 11 7:30 – 8:30 pm	\$36; \$33 SV Res



Adult Programs



Adult Program Newsletter

Sign up to receive a copy of our quarterly adult activities newsletter. It contains additional program offerings, interesting articles, and more. Call 651-490-4714 to join our mailing list.

Friends & Co!

(formerly Little Brothers - Friends of the Elderly) fosters friendships, connections, companionship and community. Call to participate in our services for older adults, as a volunteer, a supporter, or choose to do both, you will be joining an established, trusted, accepting, compassionate, connected community. Everyone's contributions matter and everyone is always welcome.

FriendsCo.org 612-721-1400



FREE TEN-MINUTE FUNCTIONAL BALANCE SCREENING BY OSI PHYSICAL THERAPY

Make an appointment for an in-person screening to measure your fall risk and identify areas to strengthen. Past participants are fans and recommend the evaluation to their friends. You can re-test to see your progress.

EVALUATE:

- Static and dynamic balance systems to establish fall risks
- Identify any areas that could benefit from focused strength training
- Identify simple assistive devices

Ten minute appointments available from 9 – 10 am. Register online or call 651-490-4750.

Location: community center

Registration deadline: one week before class

AGES	DATE & TIME	COST
50+	Tues, Dec 3	Free
50+	Tues, Jan 7	Free
50+	Tues, Feb 4	Free
50+	Tues, March 4	Free

By appointment only.

ALZHEIMER'S ASSOCIATION

Helpline 24/7/365 • 800-272-3900

Dial 711 for a TRS operator

Helpline specialists and clinicians offer confidential support and information to people living with the disease, caregivers, families and the public.

Call: We are available in any language around the clock, at 800-272- 3900.

Visit Alz.org, for additional resources

Meals On Wheels

The Meals On Wheels program is available to eligible seniors and certified, disabled individuals (regardless of age) who live in Mounds View School District 621. Hot, nutritious noon meals are delivered by volunteers Monday through Friday, except on holidays. For more information, call 651- 621-7950.



Senior LinkAge Line

800-333-2433

A free state-wide resource supporting older Minnesotans and their caregivers. Get connected to local resources, housing, Medicare information, and free classes. Senior LinkAge line is a division of the MN Board on Aging; working to ensure that all Minnesotans can age and live well.



Adult Programs



DROP IN MAH JONGG

Bring your friends and your tiles for drop-in play. All levels welcome! If you don't have tiles the park and rec desk has a set you can check-out.

Location: community center

No registration required

AGES	DATE & TIME	COST
18+	Thursdays, 1 pm	Free



500 CARD CLUB

Join us for cards and conversations. No partner required.

Location: community center

No registration required

AGES	DATE & TIME	COST
18+	Mondays, 12:30 pm	Free



PIECE OUT PUZZLE CONTEST

Puzzlers, get your team together and come to the 2nd annual Piece Out jigsaw puzzle challenge! Teams of up to four people will compete to finish a 500-piece puzzle in the shortest amount of time. Puzzle is provided. Teams get to keep their puzzles.

Prize for first- and second-place finishers

Location: New Brighton community center

Registration deadline: January 25

AGES	DATE & TIME	COST
18+	Sat, Feb 8, 10 am – noon, check-in 9:30 am	\$30 per team

HOLIDAY TEA

Come enjoy an afternoon of music with the North Suburban Chorus, a variety of teas and desserts.

TUES, DEC 17
COMMUNITY CENTER
1 - 3PM

\$20



PRE-REGISTRATION REQUIRED
REGISTRATION DEADLINE: DECEMBER 11





AARP SMART DRIVER

Taught by AARP trained instructors, Smart Driver teaches safe driving techniques to help keep you and your loved ones safe on the road. Insurance discounts for those 55+. A refresher course is required every three years. Have your AARP member number ready for a registration discount. **The eight-hour course is no longer required.**

Location: community center

Registration deadline: one week before class

4-HOUR COURSE

AGES	DATE & TIME	COST
55+	Tues, Jan 7 1 - 5 pm	\$33; \$26 AARP member
55+	Thurs, Jan 23 9 am - 1 pm	\$33; \$26 AARP member
55+	Mon, Feb 3 1 - 5 pm	\$33; \$26 AARP member
55+	Wed, Feb 19 9 am - 1 pm	\$33; \$26 AARP member
55+	Thurs, March 6 9 am - 1 pm	\$33; \$26 AARP member
55+	Tues, March 18 1 - 5 pm	\$33; \$26 AARP member
55+	Thurs, March 27 9 am - 1 pm	\$33; \$26 AARP member
55+	Tues, April 8 9 am - 1 pm	\$33; \$26 AARP member
55+	Tues, April 22 1 - 5 pm	\$33; \$26 AARP member
55+	Tues, May 6 5 - 9 pm	\$33; \$26 AARP member
55+	Wed, May 21 9 am - 1 pm	\$33; \$26 AARP member
55+	Wed, June 4 9 am - 1 pm	\$33; \$26 AARP member
55+	Tues, June 24 5 - 9 pm	\$33; \$26 AARP member

AARP FOUNDATION TAXAIDE

AARP Foundation TaxAide trained volunteers provide free basic tax assistance to seniors and low income individuals.

- **Registration opens at 9 am on Dec 10**
- Basic Federal and MN State tax forms
- Bring: current tax records
- Last year's tax return
- Social Security card and picture ID
- Income tax appointments last 1 - 2 hours
- Make your appointment after Dec 10 at 9am online, in person or 651-490-4750

Tax aide cannot help: self-employment taxes, business taxes, complex trust or investments, states other than MN, or more than one year's returns.

Location: community center

Alzheimer's Speaks

Shifting Our Dementia Care Culture™

DEMENTIA CAREGIVER SUPPORT GROUP WITH RESPITE CARE

The support group is led by a trained facilitator from Alzheimer's Speaks while your loved one can enjoy activities in a nearby room. The program is free. Registration requested, especially for respite care, but drop-ins are welcome if space is available. Meetings are the last Wednesday of the month. This program is possible thanks to a generous grant from the Shoreview Community Foundation.

AGES	DATE & TIME	COST
18+	Tue, Dec 17, 10 - 11:30 am	Free
18+	Wed, Jan 29, 10 - 11:30 am	Free
18+	Wed, Feb 26, 10 - 11:30 am	Free
18+	Wed, March 26, 10 - 11:30 am	Free



Adult Programs



CONNECTING THROUGH ART WITH PARKINSON'S

People with Parkinson's and their caregiver are invited to express feelings, emotions, and strengthen fine motor skills through drawing and painting. Socializing is encouraged during the class. This class made possible thanks to a generous grant from the American Parkinson Disease Association.

Location: community center

Registration deadline: one week before class

AGES	DATE & TIME	COST
18+	Wed, Dec 11 2:30 – 4 pm	\$5; \$4 SV Res
18+	Tues, Feb 4 2:30 – 4 pm	\$5; \$4 SV Res

INTRO TO CONGA DRUMMING

Have you been wondering what to do with that Conga drum in the corner of your garage? Sign up for this class! If you don't have one we have a few you can borrow. Come and have fun with other people learning to play music that is rich, nuanced and beautiful. We will focus on Cuban music with a few pieces from Haiti, West Africa and North America.

Location: community center

Registration deadline: one week before class

AGES	DATE & TIME	COST
18+	Mon, Feb 24 – March 31 7 – 8:45 pm	\$100; \$90 SV Res



EASY PAINTING

No experience necessary. Use easy to learn one-stroke painting with acrylics. Class includes step-by-step instruction and painting supplies. You'll leave with your very own masterpiece!

Location: community center

Registration deadline: one week before class

AGES	PAINTING	DATE & TIME	COST
18+	Winter Landscape	Mon, Jan 13 1 – 4 pm	\$48; \$44 SV Res
18+	Highland Cow	Mon, Feb 10 1 – 4 pm	\$48; \$44 SV Res
18+	Fun with Watercolors	Mon, March 10 1 – 4 pm	\$48; \$44 SV Res
18+	Spring Florals	Mon, April 14 1 – 4 pm	\$48; \$44 SV Res

CREATING ART WITH MIXED MEDIA

Explore texture, color and creativity as you use epoxy, resin, alcohol inks, and other media to create unique pieces of colorful art. Registration fee includes all materials and instruction.

Location: community center

Registration deadline: one week before class

AGES	ARTWORK	DATE & TIME	COST
12+	Butterfly Beauty with paint, glass and resin	Thurs, March 6 6 – 8 pm	\$63; \$58 SV Res



APP & SOCIAL MEDIA LIVE VIRTUAL INSTRUCTION

These classes will teach basics and answer your questions. The virtual format offers flexibility. If you need help, the instructor will call and talk you through the basics before the class. The classes are taught live through Zoom. Classes are recorded so registered students can re-watch.

Location: virtual through Zoom

Registration deadline: one week before class

Age: 18+

Cost: \$28; \$25 SV Res per class



CLASSES	DATE & TIME
Tech-Savvy Survival in 60 Minutes: Essential Skills for Everyday Life	Tues, Jan 7, noon – 1 pm
Power Up with Google Suites: Essential Tools for Everyday Tasks	Thurs, Jan 9, noon – 1 pm
Fast-Track to Social Media Marketing for Business	Mon, Jan 13, noon – 1 pm
Canva for Awesome Beginners	Tues, Jan 14, noon – 1 pm
YouTube Channel Starter Kit: Launch in 60 Minutes	Thurs, Jan 16, noon – 1 pm
One-Hour Instagram Mastery: Grow Your Business Today	Tues, Jan 21, noon – 1 pm
Parents with Littles - Your Technology Safety Toolbox	Thurs, Jan 23, noon – 1 pm
Practical ChatGPT Training for Everyone	Tues, Jan 28, noon – 1 pm
Navigate with Uber: Achieve Transportation Freedom	Thurs, Jan 30, noon – 1 pm
Cell Phones & Parenting: Balancing Connectivity and Safety	Tues, Feb 4, noon – 1 pm
Google Sheets for Awesome Beginners	Thurs, Feb 6, noon – 1 pm
My Kid Wants To Be a YouTuber - Help!	Tues, Feb 11, noon – 1 pm
How To Use Venmo Safely!	Thurs, Feb 13, noon – 1 pm
Create Social Media Content Without Panicking	Tues, March 18, noon – 1 pm



Adult Programs

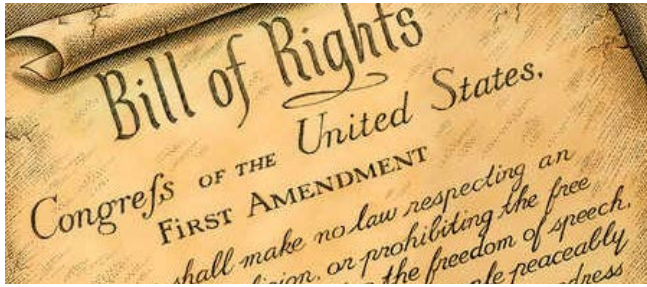


HISTORY CHATS WITH LINDA HOPKINS

Linda Hopkins is an author and speaker on constitutional law. She is a retired attorney, past advisor to the President of the United States, consultant to the governments of Bulgaria and Nepal, former chair of a government data privacy commission, and author of a book on the law.

Location: community center

Registration deadline: one week before class



YOU'RE LYING, NO, YOU'RE LYING FREE SPEECH IN AMERICA, TODAY

What is protected free speech in our country, what isn't protected, and what are the future controversies of free speech.

AGE	DATE	COST
18+	Thurs, Jan 9 1-3 pm	\$19; \$17 SV Res



WHO BUSTED THE MOBS AND THE NAZIS?

Elizebeth Smith Friedman started her career decrypting Shakespeare's plays cracking thousands of codes and ciphers during WWI and WWII. She created the field of Cryptology.

AGE	DATE	COST
18+	Thurs, March 13 1-3 pm	\$19; \$17 SV Res

DAY TRIP TO: DISCOVER DAKOTA HISTORY AT HOCOKATA TI AND LUNCH AT TEXAS ROADHOUSE

We'll take a NewTrax mini-bus to Hokokata Ti, (pronounced ho-cho-ka-ta tee) in Shakopee. They interpret and encourage traditional Mdewakanton Dakota cultural heritage, language, and history by sustaining this inherent knowledge through exhibitions, preservation and education.

Your tour will include The Mdewakanton: Dwellers of the Spirit Lake, providing visitors with a cultural experience that enhances their knowledge and understanding of the Mdewakanton (pronounced 'med-ah-wah-kah-ton') Dakota people and their history. After the tour we'll head to Texas Roadhouse to eat. Lunch is not included in the trip cost, you'll be able to order on your own.

Location: meet at the community center

Registration deadline: December 27

AGES	DATE & TIME	COST
18+	Wed, Jan 15 8:45 am - 2:15 pm	\$53

DAY TRIP TO: CHANHASSEN DINNER THEATER - GREASE!



Enjoy a nostalgic afternoon full of greased-up hair, jukebox jingles, and bobby-socks. Join Sandy, Danny Zuko, those groovy T-Birds, sassy Pink Ladies and the whole gang at Rydell High for an affectionate satire of high school life in the 50s. Shoo-bop shoo-bop a-ram-a-lam-a ding-dong! It's a high-octane Rock 'n' Roll party that entertains from start to finish. Motor coach transportation, lunch (with tip), and admission included.

Location: meet at the community center

Registration deadline: February 18

AGES	DATE & TIME	COST
18+	Wed, March 19 10:15 am - 2:15 pm	\$120



Landmark TOURS

Unforgettable Travel Experiences

LANDMARK TOURS TRAVEL SHOW

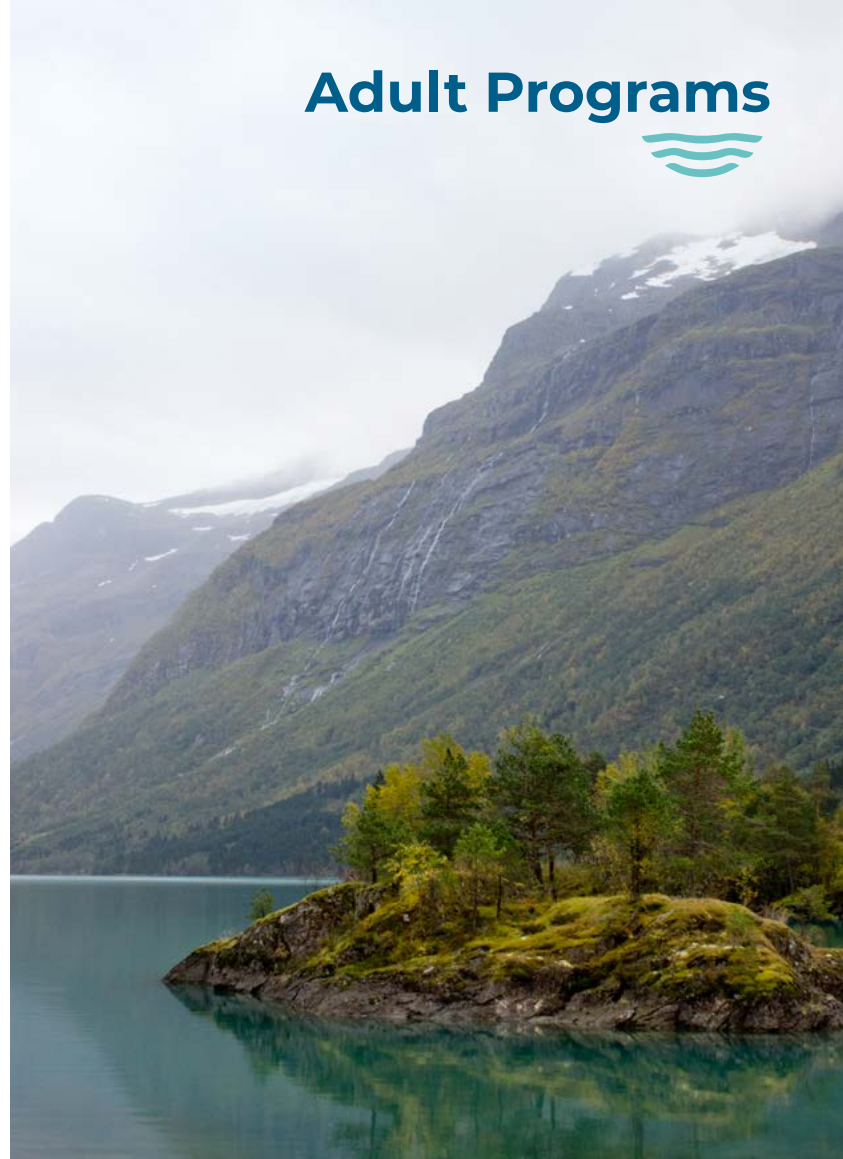
Landmark Tours is a Minnesota-based, family-owned tour operator offering over 35 destinations each year. Their inclusive packages feature roundtrip airfare, upscale accommodations, and must-see attractions. Upcoming travel opportunities include:

- London, Normandy & Paris: Remembering WWII
- Cape Cod with Newport and Martha's Vineyard
- Scandinavia: Sweden, Denmark & Norway
- New Orleans: The Big Easy
- Italy: Two Unique Departures
- British Columbia: Vancouver, Whistler, Victoria
- And many more!

Location: community center
No registration needed

AGES	DATE & TIME	COST
18+	Thurs, Jan 30 1-2 pm	Free

Adult Programs



WE'RE HIRING

Apply online at shoreviewmn.gov/jobs

Current Openings are:

Childcare attendant, gymnastics instructor, lifeguard, manager on duty, swim instructor, and more.

SWIM LESSONS



SHOREVIEW PARKS & RECREATION SWIM LESSONS

Our mission is to provide inclusive swim lessons for everyone. Our fun and imaginative approach to lessons will help you create a lifelong love of swimming. Pick your best learning environment — group lessons or private lessons. Parent-to-instructor communication is key to successful lessons. Our instructors love to teach and receive ongoing training.

Swim lesson policies

- We do not provide make-up swim lessons for any classes.
- Participants will be emailed specific program policies before the class starts.

Cancellation policies & fees

- \$5 if you cancel at least one week before the class start date.
- \$10 if you cancel within one week of the class start date.
- No refunds on or after the class start date.

A note about swim lessons

- Due to high demand, private lessons are limited to 2 sessions per participant, per session.
- Swim lessons are not canceled if Mounds View School District cancels after school activities due to weather.
- Group classes with fewer than three registered participants will be canceled.
- Students are not allowed to swim before or after lessons.
- Students should use the bathroom and shower before entering the pool area.
- Staff aren't allowed to take students to the bathroom.
- If your child needs a quieter environment to learn, look at our Tuesday, Thursday, Saturday and Sunday lessons.
- Children ages 4 and under may use any locker room.
- Children ages 5 and older must use the same sex locker room or family locker room.
- The pool water temperature is kept at 85 degrees.

FREE SWIM LESSON CHECKS

Not sure of what level to register your child for? Reserve your time at shoreviewmn.gov If your child has been away for more than three months we recommend repeating the previous level.

DATE & TIME	COST
Tues, Feb 25, 5 - 7 pm	Free
Thurs, Feb 27, 5 - 7 pm	Free
Sat, March 1, 9 - 11 am	Free
Sun, March 2, 9 - 11 am	Free

PRIVATE LESSONS (PR) AGES 3 – ADULT

Private and semi-private lessons offer one-on-one training so you're able to learn at your own pace. Lessons are 30 minutes and available at set times.

NUMBER OF LESSONS	COST
6 lessons	\$167; \$152 SV Res

SEMI-PRIVATE LESSONS

- You must have two people at the same ability for a semi-private lesson
- Register one child for a regular private lesson then visit or call Parks & Rec 651-490-4750 to have the lesson switched to semi-private
- Rate listed per person

NUMBER OF LESSONS	COST
6 lessons	\$126; \$116 SV Res





One day a week for six weeks

SESSION	DAY	DATE	TIME
Session 1	Saturday	Jan 4 – Feb 8	8:30 – 11:40 am
Session 2	Saturday	Feb 15 – March 22	8:30 – 11:40 am
Session 1	Sunday	Jan 5 – Feb 9	8:30 – 11:40 am
Session 1	Tuesday	Jan 7 – Feb 11	5 – 8 pm
Session 1	Wednesday	Jan 8 – Feb 12	5 – 8 pm
Session 1	Thursday	Jan 9 – Feb 13	5 – 8 pm

Two days a week for six weeks

SESSION	DAY	DATE	TIME
Session 2	Tues/Thurs	Feb 18 – March 6	5 – 8 pm

Lesson Rates

Group lessons	6 lessons	\$92; \$85 SV Res
Private lessons	6 lessons	\$167; \$152 SV Res
Semi-private*	6 lessons	\$126; \$116 SV Res

*Two participants of equal ability

CUSTOM PRIVATE LESSONS

- Flexible scheduling with three months to complete after first lesson starts
- Option to reschedule with advance notification
- For more information contact the aquatic program supervisor at 651-490-4712
- Rate listed per person

CUSTOM PRIVATE LESSONS:

NUMBER OF LESSONS	COST
8 lessons	\$246; \$224 SV Res
6 lessons	\$221; \$202 SV Res
4 lessons	\$145; \$132 SV Res

CUSTOM SEMI-PRIVATE LESSONS:

NUMBER OF LESSONS	COST
8 lessons	\$177; \$161 SV Res
6 lessons	\$150; \$137 SV Res
4 lessons	\$108; \$98 SV Res

Visit shoreviewmn.gov/parks-rec for full swim lesson schedule



Aquatic Programs



GROUP LESSONS

Group lessons will have one instructor to a maximum of four students.

- Group lessons are 40 minutes unless noted
- Parent/child lessons are 30 minutes

NUMBER OF LESSONS	COST
6 lessons	\$92; \$85 SV Res



PARENT/CHILD LESSONS PARENT/CHILD (PC 1)

AGES 9 MONTHS – 2.5 YEARS

- Enter/exit water with assistance
- Blow bubbles & submerge head
- Front/back float with guardian & instructor
- One adult must accompany each child in the water

PARENT/CHILD 2 (PC 2)

AGES 2 – 3.5

A parent accompanies their child in the water for the first few weeks and gradually reduces participation

- Enter/exit water independently
- Blow bubbles & submerge head
- Front/back float with instructor
- Front/back glides with assistance
- Front/back flutter kicking with instructor



BEGINNER BEGINNER 1 (B1)

AGES 2.5 – 4

- Independent entry/exit
- Front/back floats with assistance — 3 seconds
- Front/back glides with assistance
- Front/back flutter kicking with support
- Front crawl arms with face in the water

BEGINNER 2 (B2)

AGES 3 – 5

- Independent front/back floats — 5 seconds
- Front/back glides
- Front/back flutter kicking
- Front crawl arms with flutter kick
- Rhythmic breathing

BEGINNER 3 (B3)

AGES 3 – 5

- Independent front/back floats — 8 seconds
- Independent front/back glides with flutter kicking
- Front/back flutter kicking - 8 yards
- Front crawl with rhythmic breathing with assistance



BEGINNER 4 (B4)

AGES 4 – 6

- Independent front/back floats — 10 seconds
- Independent front glide into front crawl
- Front/back flutter kicking — 1/2 length
- Front crawl with rhythmic breathing with assistance — 8 yards

YOUTH BEGINNER (YB)

AGES 6 – 12

New to swim lessons or haven't been in lessons for several years

- Independent front/back floats — 10 seconds
- Independent front/back glides with flutter kick
- Front/back flutter kicking — 1/2 length
- Front crawl arms with rhythmic breathing





INTERMEDIATE LESSONS

INTERMEDIATE 1 (I1)

AGES 5 – 7

- Front/back flutter kicking — 1/2 length
- Independent back glide with flutter kicking
- Flutter kick with rhythmic breathing — 1/2 length
- Front crawl with rhythmic breathing — 1/2 length

INTERMEDIATE 2 (I2)

AGES 5 – 13

- Front glide into front crawl — 8 yards
- Back glide into back crawl — 8 yards
- Front/back flutter kicking — 25 yards
- Back crawl with assistance — 8 yards
- Elementary backstroke kick — 1/2 length
- Tread water

INTERMEDIATE 3 (I3)

AGES 5½ – 13

- Front crawl with rhythmic breathing — 25 yards
- Back crawl — 1/2 length
- Elementary backstroke — 1/2 length
- Tread water

INTERMEDIATE 4 (I4)

AGES 5.5 – 13

- Front crawl with open turn — 50 yards
- Back crawl — 25 yards
- Elementary backstroke — 25 yards
- Open turn — front
- Whip kick — 25 yards

Aquatic Programs



ADVANCED LESSONS

ADVANCED 1 (A1)

AGES 6 – 13

- Front crawl with flip turns — 75 yards
- Back crawl with open turns — 50 yards
- Elementary backstroke — 25 yards
- Breaststroke — 25 yards
- Breaststroke whip kick
- Flip turns

ADVANCED 2 (A2)

AGES 6 – 13

- Front crawl with flip turns — 100 yards
- Back crawl with open turns — 75 yards
- Breaststroke with underwater pull out — 50 yards
- Breaststroke underwater pull out
- Dolphin kick — 25 yards
- Scissors kick — 25 yards

ADVANCED 3 (A3)

AGES 6 – 13

- Front crawl with flip turns — 150 yards
- Back crawl with open turns — 100 yards
- Breaststroke with underwater pull out — 75 yards
- Butterfly — 1/2 length
- Sidestroke — 25 yards



ADULT LESSONS

ADULT BEGINNER (AB)

AGES 18+

With the guidance of our swim instructors you will learn basic swimming skills in a safe environment while gaining confidence in the water. Participants will learn:

- Front/back floats
- Front/back kicking with support
- Breathing
- Comfort in water independently



Aquatic Programs



AQUA BUBBLE WATER DISCOVERY

Explore the water with your child in fun and imaginative ways to develop swim readiness skills through songs and games.

- One adult must accompany each child in the water
- 30 minutes of instruction
- 15 minutes of play time

Location: community center

Registration deadline: one week before class

KIDS AGES	DATE & TIME	COST
1-3	Mon, Jan 6 10:15 – 11 am	\$16/pair
1-3	Mon, Feb 3 10:15 – 11 am	\$16/pair
1-3	Mon, March 3 5:30 – 6:15 pm	\$16/pair

SNORKELING

Learn the basics of snorkeling while discovering the underwater world. A variety of swimming abilities are encouraged to join us, but basic swimming skills are needed.

Equipment provided

Location: community center

Registration deadline: one week before class

AGES	DATE & TIME	COST
N/A	Mon, Jan 27 6 – 7 pm	\$31; \$28 SV Res

MERADVENTURES FOR ADULTS

Create an unforgettable experience with your friends. Participants will learn how to:

- Swim with your mermaid tail
- Swim like a mermaid and perfect your dolphin-kick technique

Mermaid tails and monofins provided.

Location: community center

Registration deadline: one week before class

AGES	DATE & TIME	COST
18+	Sat, Jan 18 10 – 11 am	\$31; \$28 SV Res

INTRODUCTION TO MERADVENTURES

Participants will learn how to:

- Swim with your mermaid tail
- Swim like a mermaid and perfect your dolphin-kick technique

Prerequisites:

- Front and back float independently - 10 seconds
- Roll from front to back and back to front
- Front crawl with rhythmic breathing - 8 yards

Mermaid tails and monofins provided.

Location: community center

Registration deadline: one week before class

AGES	DATE & TIME	COST
7-12	Thurs, Feb 13 6 – 7 pm	\$31; \$28 SV Res



SCOUTS BSA FIRST AID MERIT BADGE



Scouts learn about:

- Care for an injured or ill person until professional medical care is available
- Provide immediate care and help someone who's hurt or ill
- Help prevent infection and serious blood loss

Scouts must provide the First Aid Merit Badge pamphlet and certification card.

Location: community center

Registration deadline: one week before class

AGES	DATE & TIME	COST
11+	Mon, Feb 3 4 – 7:30 pm	\$76; \$73 SV Res

SCOUTS BSA SWIMMING MERIT BADGE



Scouts learn about:

- Safety when swimming & diving
- How swimming can contribute to overall fitness and health
- Gain some basic competitive swimming skills

Scouts must provide the Swimming Merit Badge pamphlet and certification card.

Location: community center

Registration deadline: one week before class

AGES	DATE & TIME	COST
11+	Mon, Feb 10 5 – 7:30 pm	\$57; \$52 SV Res

Note: All deep-water components will not be completed in this course.

SCOUTS BSA LIFESAVING MERIT BADGE

Prerequisite: completed Scouts BSA Swimming Merit Badge.

Scouts must provide the Lifesaving Merit Badge pamphlet and certification card.

Scouts learn how to:



- Assist those involved in water accident
- Knowledge in rescue techniques
- Perform and judge when and how to act in an emergency.

Location: community center

Registration deadline: one week before class

AGES	DATE & TIME	COST
11+	Mon, March 3 5 – 8:30 pm	\$76; \$73 SV Res

Note: All deep-water components will not be completed in this course.



Special Events

SANTA CRUISE

Watch for Santa as he makes his way around the Shoreview neighborhoods, on top of a Lake Johanna Fire Department truck. Check out our website for route details.

MONDAY, DECEMBER 9
6 – 8 PM



\$5 PER LETTER

LETTER FROM SANTA

Santa's elves want to make sure your child receives their letter from Santa this year!

Sign-up by **December 9** to ensure your letter is received before the holiday.





KID'S SECRET HOLIDAY SHOPPING SPREE

Stop by the community center to shop for the perfect gift for friends and family with the help of a personal shopper. Gifts range from \$2 - \$20.

SATURDAY, DECEMBER 14
9 AM - NOON



SANTA'S WORKSHOP

Spend the morning with Santa at his workshop. Enjoy a continental breakfast, crafts and visiting time with Santa himself. Each session is limited, children must be accompanied by an adult. Tickets must be purchased for each individual in your party

Location: community center
Registration deadline: December 9



AGES	DATE & TIME	COST
0 - 12	Sat, Dec 14 9 - 10 am	\$15 per person
0 - 12	Sat, Dec 14 10:30 - 11:30 am	\$15 per person



Special Events

HOLIDAY COOKIE DECORATING

Come have fun and decorate a dozen cookies! Each child will get a dozen cookies and be provided with all the decorating supplies. Please, bring a container to transport your beautiful cookies home.

Location: community center
Registration deadline: December 12

AGES	DATE & TIME	COST
5 – 15	Thurs, Dec 19 6 – 7 pm	\$30; \$25 SV Res

Indoor Market

Community Center
 Fireside Lounge

Tuesday, November 19 | 3:30 – 6:30 pm

Saturday, December 14 | 9 am – noon



NEW YEAR'S EVE PARTY

Bring the whole family out to ring in the new year at the community center! Pre-registration required.

Activities

- Indoor Tropical Adventures
- Tropics & Bamboo Waterpark
- Inflatables
- Face painting
- Bingo
- Magic Show and more!
- Countdown to the new year with a confetti drop!

Location: community center
Registration deadline: December 31 at noon

AGES	DATE & TIME	COST
All	Tues, Dec 31 5 – 8 pm	\$15 per person

SWEETHEART DANCE

Put on your party clothes, grab a special adult, and join us for our annual sweetheart dance! There will be a DJ playing music, crafts, treats and fun for all! So come dressed to impress and spend the evening with someone you love!

Tickets must be purchased for each individual in your party. Must pre-register, no walk-ins

Location: community center
Registration deadline: February 4

AGES	DATE & TIME	COST
10 & under	Fri, Feb 7 6 – 8 pm	\$15 per person

SUMMER CAMP GUIDE & REGISTRATION

Plan ahead for summer 2025!

Summer-Camp Guide will be available mid-January

- Summer Discovery: Full-day 10-week summer camp for kids entering Kindergarten – 6 grade. Held at the Shoreview Community Center.
- Adventure Quest: Half-day camps for kids 3 – 11 years old. Held outdoors at local parks.
- Art camps
- Musical Theater
- STEAM
- Sports camps

Registration begins at 8 am

Tuesday, February 4: Shoreview residents

Thursday, February 6: Annual members

Friday, February 7: General Public

How to register:

- Online at shoreviewmn.gov
- In person at parks & rec (M – F, 8 am – 4:30 pm)
- Over the phone with credit card at 651-490-4750



kidscorner preschool



COMMUNITY CENTER AMENITIES



School year of:
September 8, 2025 – May 21, 2026

Kids Corner Preschool offers full-day prekindergarten preparedness classes and half-day preschool classes. Located inside the community center, our programs focus on social, emotional, physical, and cognitive learning. Our goal is to make sure all students feel welcomed, have fun, and develop a passion for lifetime learning.

- A \$100 non-refundable fee is required during registration.
- Full-day classes' first week of tuition is required at the time of registration
- Half-day classes' first month of tuition is required at the time of registration
- All students must be toilet-trained

Cancellation policy:

- Full-day: cancel before June 1, refunded half of the first months tuition
- Half-day: cancel before June 1, refunded half of the first months tuition

Calendar follows Mounds View School District 621 non-school days.

**REGISTRATION
OPENS JAN 22!**



We still have openings for 2025 school year, call 651-490-4717 for more info.

KIDS CORNER PRESCHOOL OPEN HOUSE

Wednesday, January 15 from 5:30 – 7 pm

Stop by and learn about our Kids Corner Preschool Program! Meet the teachers and teacher assistants, see the different classroom spaces and amenities.

FULL-DAY PREKINDERGARTEN CLASSES: 3 – 5 YEARS OLD

Must turn 3 by August 1, 2025

Kindergarten readiness classes are designed to develop structure, skills, and create a strong foundation for kindergarten.

- **Skills work:** reading, writing, math, fine motor skills, social and emotional learning, and more.
- **Enrichment activities:** large motor activities, language, art, STEM, music, outdoor and nature play, and more.
- Before and after school options with an additional cost
- Daily snacks
- Lunch is not provided

FULL-DAY CLASS OPTIONS

DAYS OF THE WEEK	TIME	WEEKLY FEE
Mon – Fri	9:30 am – 3:30 pm	\$260: \$240 SV Res
Mon, Wed, & Fri	9:30 am – 3:30 pm	\$156: \$141 SV Res
Tues & Thurs	9:30 am – 3:30 pm	\$112: \$120 SV Res

HALF-DAY PRESCHOOL CLASSES

Half-day classes are a great option to introduce your child to a structured program or first time experience in a classroom setting. The classes focuses on the beginner stages of learning and socialization in a group environment.

- **Beginner skills work:** letters, numbers, colors, patterns, shapes, days of the week, social and emotional learning, fine motor skill development and more.
- **Enrichment activities:** large motor activities, language, art, STEM, music, outdoor and nature play, and more.
- Daily Snack

2½ – 3 years old: must be 3 by May 31, 2026

DAYS OF THE WEEK	TIME	MONTHLY FEE
Mon	9:30 am – 11:30 am	\$95; \$85 SV Res
Fri	9:30 am – 11:30 am	\$95; \$85 SV Res

3 – 4 years old: must be 3 by September 1, 2025

DAYS OF THE WEEK	TIME	MONTHLY FEE
Tues & Thurs	9:30 am – 12 pm	\$220; \$192 SV Res

BEFORE AND AFTER SCHOOL EXTENDED DAY OPTIONS: FULL-DAY CLASSES ONLY

Sign up for morning and/or afternoon options. Must sign up for the amount of days your child is attending

DAYS OF THE WEEK	AM/PM OPTIONS	WEEKLY AM FEE	WEEKLY PM FEE
Mon – Fri	7:30 – 9:30 am 3:30 – 5:30 pm	\$32.50; \$30 SV Res	\$32.50; \$30 SV Res
Mon, Wed, & Fri	7:30 – 9:30 am 3:30 – 5:30 pm	\$19.50; \$18 SV Res	\$19.50; \$18 SV Res
Tues & Thurs	7:30 – 9:30 am 3:30 – 5:30 pm	\$13; \$12 SV Res	\$13; \$12 SV Res



Youth Programs



RHYTHM KIDS

Students will learn to compose, choreograph, and conduct as they play with a variety of musical instruments: West African drums, percussion instruments, along with their own voices and bodies. While they are having fun, they'll be refining focus, dexterity, coordination, and rhythm - all things they'll use every day for the rest of their lives.

Parents or caregivers are invited to participate along with their child in class but their attendance is not required.

FREE DEMO CLASSES

Location: community center

Registration deadline: one week before class

AGES	DATE & TIME	COST
5 - 8	Sun, Dec 15 3:30 - 4:15 pm	Free

RHYTHM KIDS

Location: community center

Registration deadline: one week before class

AGES	DATE & TIME	COST
5 - 8	Sun, Jan 12 - March 16 3:30 - 4:15 pm	\$199; \$119 additional sibling

MUSIC TOGETHER

Sing, laugh, move and learn along with your baby, toddler or preschooler in these award-winning classes. The little ones love the delightful, engaging classes and the caregivers love helping their children grow into confident, life-long music makers.

Participants receive a CD, a code to download the music using our free 'Hello Everybody' app, and illustrated songbook and parent education materials.

Infants under 8 months attend at no cost with a paid sibling.

Try a free demo class to see if this program is a good fit for your family.

FREE DEMO CLASSES

Location: community center

Registration deadline: one week before class

AGES	DATE & TIME	COST
0 - 5	Tues, Dec 17 9:30 - 10:15 am	Free
0 - 5	Wed, Dec 11 10 - 10:45 am	Free
0 - 5	Sun, Dec 15 4:30 - 5:15 pm	Free

MUSIC TOGETHER

Location: community center

Registration deadline: one week before class

AGES	DATE & TIME	COST
0 - 5	Tues, Jan 7 - March 11 9:30 - 10:15 am	\$199; \$119 additional sibling
0 - 5	Tues, Jan 7 - March 11 10:30 - 11:15 am	\$199; \$119 additional sibling
0 - 5	Wed, Jan 8 - March 12 9:00 - 9:45 am	\$199; \$119 additional sibling
0 - 5	Wed, Jan 8 - March 12 10:00 - 10:45 am	\$199; \$119 additional sibling
0 - 5	Sun, Jan 12 - March 16 4:30 - 5:15 pm	\$199; \$119 additional sibling
0 - 5	Sun, Jan 12 - March 16 5:30 - 6:15 pm	\$199; \$119 additional sibling





WISH UPON A BALLET: BEAUTY & THE BEAST THEMED

Wish Upon a Ballet is a dance program for children that incorporates popular children’s stories as well as ballet stories to create a dance class that is more than ballet steps. Come join the fun! Students will need ballet shoes and comfortable clothes they can move around in.

Location: community center
Registration deadline: January 3

AGES	DATE & TIME	COST
3 – 6	Sun, Jan 12 - March 2 2 - 2:45 pm	\$116; \$106 SV Res

WISH UPON A BALLET AND TAP: BEAUTY & THE BEAST THEMED

This program offers the same curriculum as our Wish Upon a Ballet program with the added fun of tap dancing! An introduction to the movements and vocabulary of these disciplines are taught with the help of musical instruments, parachutes and scarves. Students will develop poise, strength and flexibility.

Ballet and tap shoes are required.

Location: community center
Registration deadline: January 3

AGES	DATE & TIME	COST
4 – 7	Sun, Jan 12 - March 2 2:45 - 3:30 pm	\$116; \$106 SV Res

HIP HOP DANCE PARTY

Our dance classes will be sure to keep students active. Learn upbeat styles such as jazz and hip hop and move to your favorite songs. The students will also learn warm-ups such as stretching, isolations and across the floor exercises!

Location: community center
Registration deadline: January 3

AGES	DATE & TIME	COST
5 – 10	Sun, Jan 12 - March 2 3:30 - 4:15 pm	\$116; \$106 SV Res



Youth Programs



ENCANTO MUSICAL THEATER CLASS

If you could choose to have any amazing ability, what would it be? Let's all put our special gifts into a story! We will learn music and choreography from Encanto and create our own musical! Everyone will learn how to put together a professional show from start to finish. Learn how to properly speak your lines, block a scene, develop your character and much more! We will also play fun creative games. All that is needed are comfortable clothing and lightweight sneakers or dance shoes. Friends and family are invited to a special performance beginning the final 30 minutes of the final class!

Location: community center

Registration deadline: January 3

AGES	DATE & TIME	COST
4 – 8	Sat, Jan 11 - March 1 1:30 - 2:30 pm	\$116; \$106 SV Res

DESCENDANTS: THE RISE OF RED MUSICAL THEATER CLASS

Travel back in time to save Auradon! Learn lines, songs and dances from the New Descendants and put on a show! Everyone will learn how to put together a professional show from start to finish. Learn how to properly speak your lines, block a scene, develop your character and much more! We will also play fun creative games! All that is needed are comfortable clothing and lightweight sneakers or dance shoes. Friends and family are invited to a special performance beginning the final 30 minutes of the final class!

Location: community center

Registration deadline: January 3

AGES	DATE & TIME	COST
7 – 12	Sat, Jan 11 - March 1 2:30 - 3:30 pm	\$116; \$106 SV Res





PAINT WITH ME

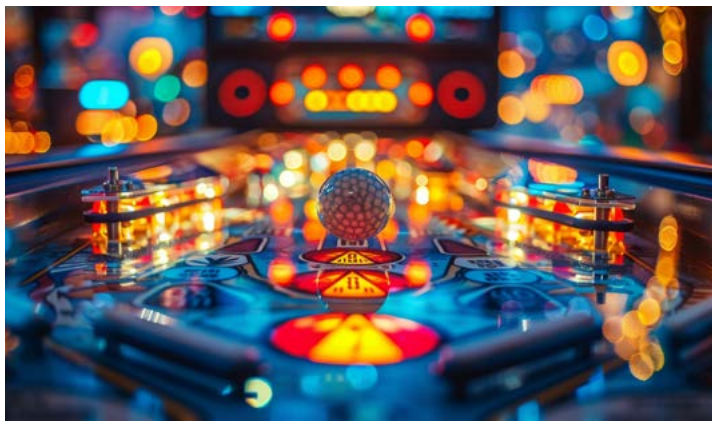
Grab your favorite adult for a fun morning of painting with Paint by Jill. A young person along with their grandparent, parent or another adult will create a painting together on one canvas. Children of all ages welcome but five and older is recommended. One registration covers the cost of one child and their adult.

See page 28 for adult paint and mixed media programs

Location: community center

Registration deadline: one week before class

AGES	ARTWORK	DATE & TIME	COST
5+	Winter Fun	Sat, Jan 11 10 am - noon	\$39; \$36 SV Res
5+	Love Bug	Sat, Feb 1 10 am - noon	\$39; \$36 SV Res
5+	Irish Gnome	Sat, March 8 10 am - noon	\$39; \$36 SV Res



DIY PINBALL MACHINE WITH KIDCREATE STUDIO

Ignite creativity in our DIY Pinball Machine class! Kids design and construct their own pinball masterpieces, combining fun and engineering in this thrilling hands-on art experience. But that's not all! The kids will also get to design and construct their own kaleidoscope! What fun! Please pack a nut free snack and drink for your child.

Location: community center

Registration deadline: January 3

AGES	DATE & TIME	COST
5 - 12	Sat, Jan 11 9 am - noon	\$60; \$55 SV Res



BABYSITTING 101

This class will cover:

- First Aid
- Sitter safety
- Crafts, toys & childproofing
- Nutrition

Location: community center

Registration deadline: one week before class

AGES	DATE & TIME	COST
10 - 13	Sun, Feb 9 1 - 5 pm	\$77; \$70 SV Res
10 - 13	Sat, March 1 8 am - noon	\$77; \$70 SV Res



Parents with tweens and teens, check out our tech classes for parents on page 31.



Youth Programs



CHess SCHOOL

Chess teaches:

- Math concepts
- How to strategize
- Spatial and critical thinking
- Focused concentration
- Memory building skills

Open to all level of players. The professional coaches divide the room by abilities. Beginners learn basic game rules and opening tactic moves. Intermediate and advanced players learn sophisticated combinations and strategies and advanced opening moves. Best of all - chess is fun!

Location: community center

Ages: 5 – 15

Registration deadline: one week before class

SESSIONS	DATE & TIME	COST
Session 1	Sat, Jan 11 - Feb 22 10 - 11:15 am	\$146; \$136 SV Res
Session 2	Sat, March 8 - April 26 10 - 11:15 am	\$146; \$136 SV Res
Spring session	Sat, May 3 - June 7 10 - 11:15 am	\$112; \$102 SV Res
Session 1	Wed, Jan 8 - Feb 26 6:15 - 7:30 pm	\$146; \$136 SV Res
Session 2	Wed, March 5 - April 23 6:15 - 7:30 pm	\$146; \$136 SV Res
Spring session	Wed, April 30 - June 4 6:15 - 7:30 pm	\$112; \$102 SV Res

STEAM – DIY CRYSTALS WITH KIDCREATE STUDIO

Calling all crystal enthusiasts! It's time to dive into this exhilarating STEAM class where kids will discover the magic of creating their own crystals using a mind-blowing top secret concoction. But that's not all - they'll also unleash their artistic side by painting vibrant pictures of these dazzling crystals. Don't miss out on this fantastic adventure! Please pack a nut free snack and drink for your child.

Location: community center

Registration deadline: February 14

AGES	DATE & TIME	COST
4 – 9	Sat, Feb 22 9 am - noon	\$59; \$54 SV Res



TAE KWON DO & LIL NINJAS

Lil' Ninjas and Tae Kwon Do classes are taught by Master Pam Meyers of Sun Yi's Academy of Traditional Tae Kwon Do. Questions about her program? Send Pam an email at pmeyerstkd@gmail.com

LIL NINJAS

Lil' Ninjas is specifically designed to enhance your child's development in a fun and motivating way. Class focuses on improving basic listening, social, and motor skills. Our instructors work on focus, team work, control, balance, memory, discipline, fitness, coordination, and respect.

Class is limited to eight students. Sun Yi Academy uniforms are required. Uniforms can be purchased for an additional fee (cash or check) with the instructor the first night of class.

Location: community center — studio 3

Registration deadline: January 8

AGE	RANK	DATE & TIME	COST
4 – 6	High	Wed, Jan 8 - March 19 5:15 – 5:45 pm	\$132; \$121 SV Res
4 – 6	Low	Wed, Jan 8 - March 19 5:45 - 6:15 pm	\$132; \$121 SV Res
4 - 6	Low	Thurs, Jan 9 - March 20 5:15 – 5:45 pm	\$132; \$121 SV Res
4 – 6	High	Thurs, Jan 9 - March 20 5:45 – 6:15 pm	\$132; \$121 SV Res

INTRODUCTION TO TAE KWON DO

This class is for students new to Sun Yi's Academy of Tae Kwon Do. Students will learn the fundamental skills of Tae Kwon Do. No uniform is needed for this class. Wear comfortable clothing.

Location: community center — studio 3

Registration deadline: January 7

AGE	DATE & TIME	COST
7+	Tues, Jan 7 - March 18 5:30 - 6:15 pm	\$132; \$121 SV Res



TAE KWON DO

New students must take Introduction to Tae Kwon Do before taking a ranked class.

Tae Kwon Do is unlike other martial arts programs, incorporating physical and mental elements into each class. Classes teach kicking, punching, striking, and blocking techniques through traditional Tae Kwon Do. Students will improve stamina, strength, speed, agility, coordination, balance, reflexes, concentration and confidence.

BELT	RANK
White through Orange	Low
Green	Middle
Blue and above	High

Location: community center — studio 3

Registration deadline: January 7

Pre-requisite: Introduction to Tae Kwon Do

AGE	RANK	DATE & TIME	COST
7+	Low	Tues and Thurs, Jan 7 - March 20 6:15 - 7:15 pm	\$264; \$242 SV Res
7+	High	Tues and Thurs, Jan 7 - March 20 7:15 – 8:15 pm	\$264; \$242 SV Res





TUMBLING

Discover the sport of tumbling in a positive, educational atmosphere. Participants will learn basic skills on floor, balance beam, bars, and vault. Due to space limitations there is no observation area for parents; parents are invited to observe the final class.

Location: community center

Registration deadline: one week before class

AGE	CLASS	DATE & TIME	COST
2 – 3	Toddler & Parent *	Sat, Jan 4 - Feb 8, 9:45 - 10:30 am	\$106; \$95 SV Res
3 – 5	Beginner	Sat, Jan 4 - Feb 8, 10:45 - 11:30 am	\$106; \$95 SV Res
5 – 7	Intermediate	Sat, Jan 4 - Feb 8, 11:45 am - 12:45 pm	\$106; \$95 SV Res
2 – 3	Toddler & Parent *	Sat, March 8 - April 12, 9:45 - 10:30 am	\$106; \$95 SV Res
2 – 3	Toddler & Parent*	Sat, March 8 - April 12, 10:45 - 11:30 am	\$106; \$95 SV Res
3 – 5	Beginner	Sat, March 8 - April 12, 11:45 am - 12:30 pm	\$106; \$95 SV Res
5 – 7	Intermediate	Sat, March 8 - April 12, 12:45 - 1:30 pm	\$106; \$95 SV Res

*Parent participation is required for this class. Please only send one adult with one child.

MINI KICKERS

This is a great class for learning the basic skills and sportsmanship of soccer. Classes meet for six sessions. Please wear tennis shoes to class. Soccer cleats are not allowed in the gym.

Location: community center

Registration deadline: January 10

AGES	DATE & TIME	COST
3 – 5	Sat, Jan 18 - Feb 22 9 - 9:30 am	\$88; \$80 SV Res
3 – 5	Sat, Jan 18 - Feb 22 9:35 - 10:05 am	\$88; \$80 SV Res
3 – 5	Sat, Jan 18 - Feb 22 10:10 - 10:40 am	\$88; \$80 SV Res

TGA PICKLEBALL & GOLF

TGA (Teach. Grow. Achieve.) brings both the golf course and pickleball court to your student, making it convenient and affordable to learn and play these sports in a fun and safe environment. Kid-friendly instructors help students develop skills and knowledge in both golf and pickleball, while using these sports to teach valuable life lessons like honesty and sportsmanship. Best of all, top-notch equipment and training materials are provided, so students of all skill levels have the chance to come out and play with TGA!

Location: Valentine Hills Elementary

Registration deadline: one week before class

PICKLEBALL

AGES	DATE & TIME	COST
6 – 12	Mon, Jan 27 - March 10* 6:30 - 7:30 pm *no class Feb 17	\$194; \$175 SV Res

GOLF

AGES	DATE & TIME	COST
6 – 12	Thurs, Jan 30 - March 6 6:30 - 7:30 pm	\$194; \$175 SV Res





RevSports Classes

Come and enjoy the fun filled classes that RevSports has to offer! Each class will provide instruction, games, and fun! Age appropriate equipment is provided

VOLLEYBALL

RevSports volleyball players learn and practice fundamentals through individual player development. Each day will focus on a new topic building on the previous topic including: passing, setting, serving and hitting.

Location: Valentine Hills Elementary

Registration deadline: one week before class

AGE	DATE & TIME	COST
4 – 6	Tues, Jan 7 - 28 5:30 - 6:10 pm	\$95; \$86 SV Res
6 – 9	Tues, Jan 7 - 28 6:15 - 6:55 pm	\$95; \$86 SV Res
9 – 12	Tues, Jan 7 - 28 7 - 7:40 pm	\$95; \$86 SV Res
4 – 6	Tues, Feb 4 - 25 5:30 - 6:10 pm	\$95; \$86 SV Res
6 – 9	Tues, Feb 4 - 25 6:15 - 6:55 pm	\$95; \$86 SV Res
9 – 12	Tues, Feb 4 - 25 7 - 7:40 pm	\$95; \$86 SV Res



BASKETBALL

RevSports basketball players learn and practice fundamentals through individual player development. Each day will focus on a new topic building on the previous topic including: dribbling, shooting, defending, passing and more.

Location: community center

Registration deadline: one week before class

AGE	DATE & TIME	COST
3 – 4	Mon, Jan 13 - Feb 10* 5 - 5:25 pm	\$95; \$86 SV Res
4 – 6	Mon, Jan 13 - Feb 10* 5:30 - 6:10 pm	\$95; \$86 SV Res
4 – 6	Mon, Jan 13 - Feb 10* 6:15 - 6:55 pm	\$95; \$86 SV Res
6 – 8	Mon, Jan 13 - Feb 10* 7 - 7:40 pm	\$95; \$86 SV Res
3 – 4	Mon, Feb 24 - March 17 5 - 5:25 pm	\$95; \$86 SV Res
4 – 6	Mon, Feb 24 - March 17 5:30 - 6:10 pm	\$95; \$86 SV Res
4 – 6	Mon, Feb 24 - March 17 6:15 - 6:55 pm	\$95; \$86 SV Res
6 – 8	Mon, Feb 24 - March 17 7 - 7:40 pm	\$95; \$86 SV Res

*No class on Jan 20





BLIZZARD SKI & SNOWBOARD SCHOOL

Experience the ultimate in skiing, snowboarding and racing instruction from beginners to experts! At seven local snowsports areas, our top-quality adult instructors will teach you to improve your skiing or boarding on groomed runs and terrain parks! You provide your own food and gear (season-long discounts and rentals are available), we provide the rest!

To register: visit blizzardmn.com or call 763-559-3343

Mention: SHO24

Time: 7:30 am – 5:30 pm (approx)

Ages: 8 – 18, grades 2 - 12

Dates: Saturdays or Sundays, December – March; 11 weeks plus 3 BONUS trips

Bus pick-up location: community center

PROGRAMS:

Classic (5 – 12 grade) \$525*

Explore trails and terrain parks with experienced instructors during 4.5 of instruction with plenty of time to free ski or ride, too! ALL levels – beginner to advance. Additional Teen ONLY trips!

Teen Sampler Program (7 – 12 grade) \$300*

Can't commit to an entire season? Or have you always wanted to learn how to ski or snowboard - this program is for you! 4.5 hours of instruction each trip. First 3 Saturdays OR Sundays in December.

Team Blizzard (5 – 12 grade) \$675*

Ski Racing Team instruction only

Intermediate to expert skiers stir up some friendly competition as you learn strategies and tactics for racing. Sharpen your skills as you prepare to go head-to-head against racers. A great way for high school racers to get an edge on the competition and recreational racers to improve and have fun! Additional Teen ONLY trips!

Apprentice Program (8 – 12 grade) \$675*

This program is for those with a passion for skiing or snowboarding. Blizzard will provide you with the tools to be a successful instructor upon completion of the program.

*Weekly Trip Fees:

You will be contacted prior to the trip each week for your reservation. Using our flexible pay-as-you-go trip fee structure, you pay a weekly trip fee of about \$95 to cover round trip bus transportation and lift ticket. If you can't attend that week, you don't owe anything!





ICE SKATING INSTRUCTION: GROUP LESSONS

PRE-SNOWPLOW | AGES 4 – 8

With a mix of fun games and drills, this class will help participants gain the strength and confidence to stand on their own while introducing preliminary skating moves and techniques.

SNOWPLOW SAM | AGES 4 – 10

Participants will learn to skate in a safe and fun environment. This class introduces preliminary moves that will help develop the familiarity, coordination and strength needed to maneuver on skates.

LEVELS 1 – 3 | AGES 6+

Our leveled classes encourage participants to trade in hesitation for excitement as their confidence grows with each stride. Participants will focus on skills that build their agility, balance, coordination and speed.

Helpful tips for skaters: lace skates more snugly in the middle of the shoe than at the top or bottom for best support. Skates should fit correctly – don't use skates that are too big. Keep the blades sharp. Wear one pair of light weight wool or synthetic socks. Cotton socks are not suitable for skating. If a child does not meet the basic requirements of the level registered for, the instructor will adjust the child's level.

Helmets and skates: for safety, all participants are required to wear helmets. Bike helmets are acceptable. **Helmets and skate rental are NOT available at the rink.**

Location: The Shoreview Arena, Hwy 96 & Victoria St.

Registration deadline: December 27

CLASS	TIME	COST
Snowplow	Sat, Jan 4 - Feb 15 8 - 8:30 am	\$120; \$110 SV Res
Level 1	Sat, Jan 4 - Feb 15 8 - 8:30 am	\$120; \$110 SV Res
Snowplow	Sat, Jan 4 - Feb 15 8:35 - 9:05 am	\$120; \$110 SV Res
Level 1	Sat, Jan 4 - Feb 15 8:35 - 9:05 am	\$120; \$110 SV Res
Level 2	Sat, Jan 4 - Feb 15 8:35 - 9:05 am	\$120; \$110 SV Res
Pre-snowplow	Sat, Jan 4 - Feb 15 9:10 - 9:40 am	\$169; \$159 SV Res



Parks and Recreation



RINKS

Shoreview has seven outdoor skating rinks with staffed warming houses. All of the locations below have lighted hockey* and general skating rinks (*hockey rink not available at Commons Park)

PUBLIC SKATING

DECEMBER 26 – FEBRUARY 23

(depending on weather and ice conditions)

Bucher Park	5900 Mackubin St
Commons Park Skating Pond	4580 Victoria St N (no hockey)
McCullough Park	955 County Rd I
Sitzer Park	4344 Hodgson Rd
Shamrock Park	5623 Snelling Ave
Wilson Park	815 County Rd F
*Bobby Theisen Park	<i>Closed for the season due to park construction</i>

WARMING HOUSE HOURS

DECEMBER 26 – FEBRUARY 23

Monday – Friday	4:30 – 8:30 pm
Saturday	noon – 8 pm
Sunday	noon – 6 pm
District 621 school's out days	noon – 9 pm
New Year's Eve	noon – 6 pm
New Year's Day	noon – 9 pm

It takes 7 – 10 consecutive days of below-freezing temperatures to make a safe ice surface.

Warming houses will be closed when it is in the best interest and safety of the community.

Warming houses will be closed if:

- warm temps have softened the ice
- temps are below – 10 degrees
- wind-chills are below – 20 degrees
- we have substantial snowfall

WEATHER UPDATES

Call the weather line at 651-490-4765 for updates

TRAILS FOR CROSS COUNTRY SKIING

Ramsey County Parks & Recreation offers marked and groomed cross-country ski trails at county parks. All trails are open daily from sunrise to sunset. Trail maps and grooming patterns for each park are available; please visit ramseycounty.us



SNOWSHOE RENTALS

Snowshoes can be rented by calling **651-490-4753** or email ljarosz@shoreviewmn.gov. Please call or email at least two business days before your desired rental date. Payment will be due when you come to pick up your snowshoes.

When reserving, please give a pick-up time so staff can prepare equipment before your arrival. Items can be picked up and dropped off at the parks and recreation desk at the Shoreview Community Center.

RENTAL	COST	PICKUP/DROP-OFF TIME
Mon – Fri	Adults: \$25 Youth: \$18	Mon – Fri 8:30 am – 4 pm
Weekend	Adults: \$15 Youth: \$10	Friday before your rental 8:30 am – 4 pm

SNOWSHOE SIZE	# AVAILABLE	MAX. WEIGHT
20 inch (youth)	4	80 lbs
22 inch	4	160 lbs
24 inch	4	200 lbs
XL	4	220+lbs

For more information, visit shoreviewmn.gov/parks-rec



JOIN OUR TEAM

Part-time, flexible hours,
free community center membership

CHILD CARE ATTENDANT

\$12.50-16/hour

Provide care for children 6 months to 12 years in our drop-off center. Exp. with preschoolers preferred.

GROUP FITNESS INSTRUCTOR

\$20-27/hour

Seeking certified instructors to teach yoga, cardio or strength classes.

GUEST SERVICES/MEMBERSHIPS

\$15-18.50/hour

Answer questions, give tours, room set-up, address guest issues, provide backup at desk and café.

ICE SKATING INSTRUCTOR

\$13-17/hour October - February

Instruct youth in ice skating. Skating knowledge & experience required. 2-4 hours Saturday mornings.

LIFEGUARD

\$14-16/hour
(Up to \$20/hr for certain shifts)

No experience required. Training is provided through Ellis Certification. Must be at least 15 years old.

MANAGER ON DUTY

\$19-25/hour

Coordinate daily activities, supervise staff, assist guests, follow safety/security procedures.

PERSONAL TRAINER

\$20-27/hour

Nationally-certified trainers provide personalized workouts for general fitness & sport-specific conditioning.

SERVICE DESK

\$13-17/hour

Help guests on the phone and in-person, operate cash register, log membership information, assist cafe staff.

SPECIAL EVENTS STAFF

\$12.50-16/hour

Help host our Egg Hunt, Kids Garage Sale, Halloween Hoopla, etc. Duties include decorating and clean-up.

SWIMMING INSTRUCTOR - WE WILL TRAIN

\$15-17/hour

No experience required, training provided. Morning/early evening classes held at the community center.

SWIMMING INSTRUCTOR - PRIVATE LESSONS

\$27-28/hour

Develop customized swim lessons to fit each individual based on their skill level.

WATERSLIDE ATTENDANT

\$12-14/hour
(Up to \$20/hour for certain shifts)

Control access to water slide entrance, supervise guests and ensure guest safety.

WAVE CAFE ATTENDANT

\$12-15.50/hour

Prepare food, operate cash register, maintain a clean work area and lobby/tables, stock supplies.

OPEN UNTIL FILLED!

Find current job listings online at
shoreviewmn.gov/jobs





		Acres	Ballfields	Basketball Court	Football	Skating Rink	Paths	Pickleball	Tennis	Picnic Area	Playground	Shelter	Soccer	Circuit Training
Bobby Theisen Park	3575 Vivian Avenue	15		1	√	√	√	6	2			1	√	
Bucher Park	5900 Mackubin Street	25	2	1	√	√	√		2	√	√	1	√	√
Heritage Park	1170 Lepak Court	3												
Lake Judy Park	900 Tiller Lane	5		½			√			√	√			
McCullough Park	955 County Rd I	75	2	1	√	√	√		2	√	√	1	√	
Ponds Park	190 Sherwood Road	1					√			√	√			
Rice Creek Fields	5880 Rice Creek Pkwy	10	4				√			√	√			
Shamrock Park	5623 Snelling Avenue	23	2	1	√	√	√		2	√	√	1	√	
Shoreview Commons	4580 North Victoria	40		1	√	√	√	2	2	√	√	1	√	
Sitzer Park	4344 Hodgson Road	8	2	1		√	√		2	√	√	1		
Wilson Park	815 County Road F	13	2	1		√	√			√	√			

The following are operated by Ramsey County Parks & Recreation.

651-266-0300

ramseycounty.us/parks

		Acres	Boat Ramp	X-Country Skiing	Fishing	Hiking Trails	Hockey Rink	Golf Course	Paths	Picnic Area	Playground	Shelter	Swimming
Island Lake Cty Park	3611 Victoria Street	167	√		√			√	√	√	√	√	
Lake Owasso Cty Park	370 N. Owasso Blvd.	9	√		√				√	√	√	√	√
Shoreview Ice Arena	877 Highway 96						√						
Snail Lake Regional Park	580 Lake Blvd.	400	√	√	√	√			√	√	√	√	√
Turtle Lake Cty Park	4979 Hodgson Road	9	√		√					√	√	√	√

For indoor pickleball and swimming visit the Shoreview Community Center.





Presorted Standard
U.S. POSTAGE
PAID
TWIN CITIES, MN
PERMIT NO. 5606

City of Shoreview
4600 Victoria Street North
Shoreview MN 55126

December Membership Special

\$40 one month
membership
(per person, includes tax)

On sale from December 1 – 31

- membership starts the day you sign up
- only able to purchase one month
- deadline December 31 by 4 pm

