

# SHOREVIEWS



## SPRING 2024

City News and Recreation Catalog

City news	4
Resident resources	9
Community center	14
Recreation programs	21



## In this Issue

City news	4
Resident resources	9
Registration information	13
Community center	14
Event rentals	17
Group fitness	21
Adult sports	25
Adult programs	26
Aquatics	32
Kids Corner Preschool	38
Youth programs	41
Youth sports	46
Jobs	50
Recreation areas	51

## Events at a Glance

**BAMBOO BAY EGG HUNT**

**SUNDAY, MARCH 17**

**SHOREVIEW EGG HUNT**

**SATURDAY, MARCH 23**

**SPRING COOKIE DECORATING**

**THURSDAY, APRIL 18**

**SPRING ROYAL TEA PARTY**

**SUNDAY, MAY 19**

*see page 40 for details*





## SPRINGFEST

CELEBRATING  
EARTH DAY

Sunday, April 21  
Events from 2 – 5 pm

*see page 39 for details*



## ADOPT A PARK

shoreviewmn.gov

*see page 39 for details*



## WATER SAFETY CAMP

Saturday, May 4

*see page 40 for details*

## Contact Us

City Hall	651-490-4600
Community Center	651-490-4700
Parks and Recreation	651-490-4750
Building Permits	651-490-4683
Code Enforcement	651-490-4669
Forestry	651-490-4665
Human Resources	651-490-4619
Planning and Zoning	651-490-4680
Recycling	651-490-4650
Sewer & Water	651-490-4661
Streets	651-490-4671
Utility Billing	651-490-4630

### POLICE & ANIMAL CONTROL

Police protection and animal control are provided by Ramsey County Sheriff's Office.

For non-emergencies	651-767-0640
For emergencies	911

### FIRE

Fire protection is provided by the Lake Johanna Fire Department.

For emergencies	911 Dispatch
Non-emergency	651-415-2100

### CITY OFFICIALS

**Sue Denkinger, mayor**  
651-490-4618 | sdenkinger@shoreviewmn.gov

**John Doan, council member**  
612-424-2527 | jdoan@shoreviewmn.gov

**Emy Johnson, council member**  
763-443-5218 | ejohnson@shoreviewmn.gov

**Shelly Myrland, council member**  
763-291-0185 | smyrland@shoreviewmn.gov

**Cory Springhorn, council member**  
651-403-3422 | cspringhorn@shoreviewmn.gov

**Brad Martens, city manager**  
651-490-4611 | bmartens@shoreviewmn.gov



# BUDGET HIGHLIGHTS

The City of Shoreview adopts its operating budget and capital improvement program every year, and five-year operating plan every two years. These documents, along with our strategic objectives, set the direction for the city.



## ELECTED OFFICIALS

- Mayor Sue Denkinger
- Councilmember John Doan
- Councilmember Emy Johnson
- Councilmember Shelly Myrland
- Councilmember Cory Springhorn

## SHOREVIEW STAFF

City Manager: Brad Martens

EMPLOYEES	Department	Count
98	Administration	9
	Community development	10
	Finance	8
	Human resources	3
	Parks and recreation	39
	Public works	29

## BUDGET SUMMARY

Total expenditures & transfers out		\$61,804,655
<b>ENTERPRISE BUDGET</b>	<b>GENERAL FUND</b>	<b>DEBT FUNDS</b>
\$11,964,498	\$15,845,797	\$2,045,628
<b>CAPITAL IMPROVEMENT</b>	<b>SPECIAL REVENUE</b>	<b>INTERNAL SERVICE</b>
\$21,418,893	\$8,818,023	\$1,711,816
General fund revenue & transfers in		\$15,845,797
General fund expenditures & transfers out		\$15,845,797



## GENERAL FUND REVENUE



**2024 RATES**

Last fall, the city reviewed its rates for utilities, recycling, and cable to see if changes would be needed for 2024. The revenue from these rates pay for operations and improvements for the important services below.

**UTILITIES**

The city's utility funds operate as enterprise funds. This means that the rates charged are designed to cover the expenses. Your utility bill includes water, sewer, surface water, street lights, and a state fee. The water and sewer rates are based on how much you use, while the surface water and street light charges are flat fees. The city does not control the state fee.

In order to maintain a strong and reliable utility system, and provide safe drinking water, the city council approved moderate increases to its utility rates for 2024. An average household (15,000 gallons) will see a 2.3% (\$5.59) increase in their quarterly bill.

View the 2024 utility rates at [shoreviewmn.gov/utilities](https://shoreviewmn.gov/utilities).

**RECYCLING**

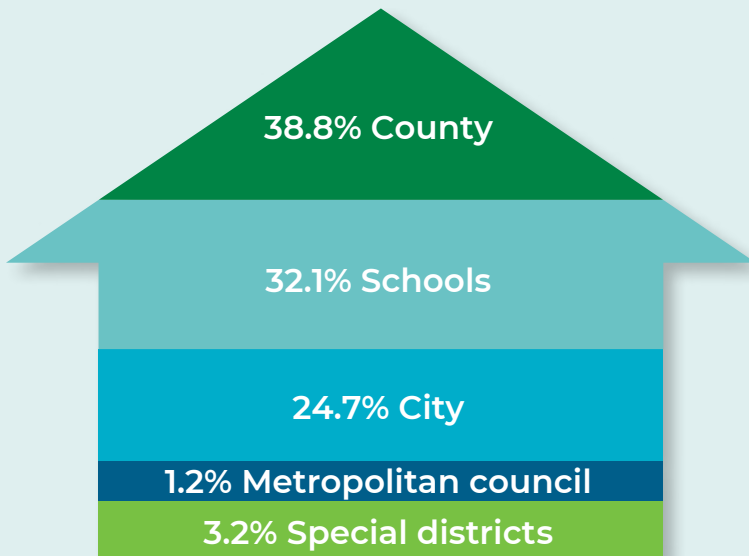
The city's recycling fund is used to cover expenses for the recycling program and cleanup day event. A portion of the revenue for this fund comes from a recycling fee charged to property owners on their property tax bill. The city also receives an annual grant to help cover costs.

Since 2018, when the current contract was approved, costs have increased. This is due to higher labor rates, costs of trucks, equipment, and maintenance, and insurance costs. In order to continue providing a recycling program, the city council approved an increase to the recycling fee for 2024 to \$101. This equals \$8.42 per month for weekly recycling collection.

**CABLE**

The city's cable fund is used for updating and maintaining the equipment used to broadcast meetings. Revenue for this fund comes from two fees on Comcast's cable bill: a franchise fee and PEG (public, educational, and governmental programming) fee.

Since 2015, the number of cable subscribers, and therefore revenue, has declined, while PEG costs have increased. In order to cover the increasing costs while maintaining coverage of council and planning commission meetings, the city council approved an increase to the PEG fee. This is the first increase since 2015. If you're a cable subscriber, you will see a \$0.30 increase to your monthly PEG fee.

**WHERE DO PROPERTY TAXES GO?**


**Median value home - \$416,800**

**total taxes = \$5,309**

Shoreview's taxes rank sixth lowest when compared to 28 peer cities in the metro area. The city's portion amounts to \$109 per month for residents.

**2024 PROJECTS**
**Park projects**

- Bobby Theisen - New building & playground
- Shoreview Commons - New building
- Shamrock - New playground
- Rice Creek Fields - Dugout upgrades
- Sitzer - Dugout upgrades

**Compensation & classification study**
**Ash tree removals and replacements in city right-of-way**
**Street and trail improvement projects**

- New trail on Hodgson Road between Hwy 96 and Gramsie Road\*
- Reconstruction of intersection at Hodgson Road and County Road J\*
- Rehabilitation of various streets, approximately four miles every other year

*\*The city is partnering with Ramsey & Anoka counties on these projects.*



## 2023 SHOREVIEW CITIZEN OF THE YEAR: JOHN SUZUKIDA

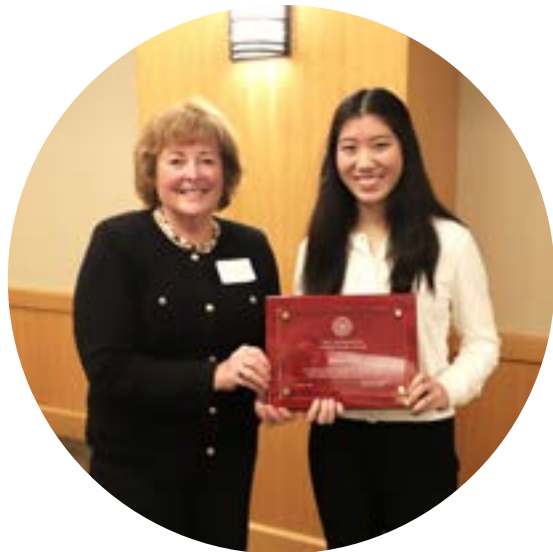
John Suzukida was honored by the city council with the 2023 Shoreview Citizen of the Year Award in November 2023.

With a passion for environmental stewardship, John has been working to leave a better Shoreview for generations to come. Most notably, John served on the environmental quality committee from 2012 - January 2024. While on the EQC, John served on the energy subcommittee, advocated for solar panels on the maintenance center roof and EV charging stations at city hall, and presented at the EQC speaker series.

In addition to the EQC, John has volunteered with many other organizations including the Shoreview/Arden Hills Rotary Club, Fishing for Fun, Metro CERT, Small Sums, and Shoreview Area Youth Baseball.

Although driven by his commitment to future generations, John also has a keen sense of learning from our history. He has given presentations to almost 2,000 people on his parent's experiences of being incarcerated in America's concentration camps during World War II as American citizens of Japanese descent. In his nomination letter, Kent Peterson notes "John's deeply personal and important messages challenge us all to think about and take action on how we treat our neighbors today."

When asked if he has any advice for someone who wants to start volunteering, John said "Take a look at the many ways that are available to volunteer, find something that fits and give it a try. Volunteers make the difference between Shoreview being a very good place to live to being a great place to live."



## 2023 CARING YOUTH AWARD WINNER: ELLEN GUO

Ellen Guo received the 2023 Caring Youth Award in November 2023. This annual award, created by the Shoreview Human Rights Commission, honors the city's outstanding youth. It reminds us that anyone, no matter their age, can help form the foundation of our community.

According to Meghan Childs, dean of students at Mounds View High School, Ellen is not only integral to many extracurricular activities but she's also deeply committed to giving back to the community. She goes on to say that Ellen is a true inspiration to others thanks to her positive attitude, dedication, and strong sense of social responsibility.

As a senior at Mounds View High School, Ellen has been volunteering in Shoreview since she was six. Recently, Ellen used her passion for computer science to create a high school coding club and a middle school coding camp, where she teaches coding languages to peers and younger students. Driven by her dedication to volunteering, Ellen

uses the coding club and coding camp to provide a space to discuss larger concepts, like how the gender and racial gap in computer science affects their community.

In addition to the coding club and camp, Ellen volunteers at Johanna Shores Nursing Home, Incarnation Lutheran Church, and Regions Hospital. She's also a member of her high school orchestra, captain of the science Olympiad team, student council member, National Honor Society executive board technology director, and the first-chair violinist at the Minnesota Youth Symphonies.

When asked what her favorite part of volunteering is, Ellen said that it's knowing the positive influence she can have over people's lives.





**CITY OF SHOREVIEW  
SPRING WATER SYSTEM FLUSHING**

The public works department will be flushing all the water mains beginning the week of May 1, 2024. This typically takes three weeks to complete.

Residents may notice discolored water for a short period, after nearby hydrants have been flushed. Although the water is safe for consumption, you may want to reschedule laundry or other work that may be affected by the discolored water. If the water is discolored, flush out your service pipes by running the laundry tub faucet or the outside faucets.

Questions? Call the **public works department** at 651-490-4661.

**RAIN BARRELS & COMPOST BINS**

The Recycling Association of Minnesota offers residents compost bins and rain barrels at a discounted rate in an online sale each spring. Products, ordering, and more information can be found online at [recycleminnesota.org](https://recycleminnesota.org).

**Yards in Bloom**

This year, the City of Shoreview is promoting a variety of yard care practices to benefit water quality and pollinators. Residents are encouraged to find one or more that work for them and their yards.

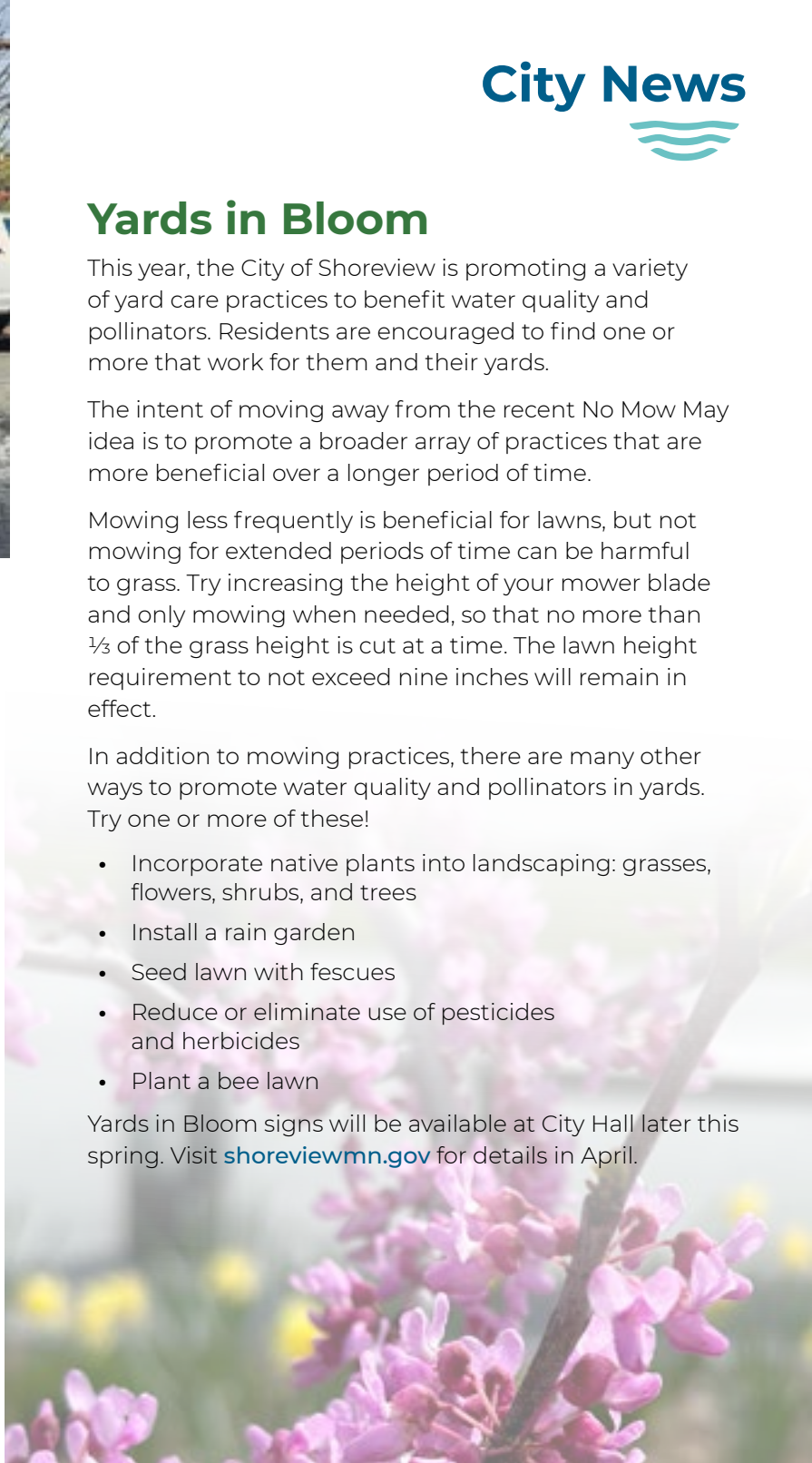
The intent of moving away from the recent No Mow May idea is to promote a broader array of practices that are more beneficial over a longer period of time.

Mowing less frequently is beneficial for lawns, but not mowing for extended periods of time can be harmful to grass. Try increasing the height of your mower blade and only mowing when needed, so that no more than 1/3 of the grass height is cut at a time. The lawn height requirement to not exceed nine inches will remain in effect.

In addition to mowing practices, there are many other ways to promote water quality and pollinators in yards. Try one or more of these!

- Incorporate native plants into landscaping: grasses, flowers, shrubs, and trees
- Install a rain garden
- Seed lawn with fescues
- Reduce or eliminate use of pesticides and herbicides
- Plant a bee lawn

Yards in Bloom signs will be available at City Hall later this spring. Visit [shoreviewmn.gov](https://shoreviewmn.gov) for details in April.



**Want to appeal your property value?**

Every March, Ramsey County sends out information on your property value. If you think the value is too high or low, you can appeal it through the Minnesota Tax Court on or before April 30, 2024.

Visit [ramseycounty.us/property](https://ramseycounty.us/property) or [mn.gov/tax-court](https://mn.gov/tax-court) for more information.

Additional questions on your property value?

**Ramsey County Assessor's Office, 651-266-2131.**



## 2024 Environmental Quality Committee Speaker Series

The speaker series will be held at city hall in the council chambers at 7pm on the following dates. Visit [shoreviewmn.gov/eqc](http://shoreviewmn.gov/eqc) to find out more and view the presentations after the event takes place.

### FEBRUARY 26, 7 PM SOLVING RECYCLING MYSTERIES

We want to recycle right, but it seems like the rules keep changing. Putting things you wish could be recycled in your cart, called Wishcycling, can cause damage and even injuries. In this upbeat and humorous presentation, Tim Pratt will share tips to solve common recycling mysteries.

### MARCH 25, 7 PM WEATHER: PAST, PRESENT, AND FUTURE

Peter Boulay, DNR Climatologist, will talk about climate trends, drought impacts, how climate is affecting invasive species, and what trees to plant in the Shoreview area for our changing climate.

### APRIL 22, 7 PM BRING NATURE HOME BY LOSING SOME LAWN

Lawns are America's No. 1 irrigated crop and we spend billions each year on their upkeep. Our love of lawns impacts water quality, drinking water supplies, biodiversity, and our environment. Learn how converting lawns to sustainable alternatives can be a win-win for people and the environment from Paul Erdmann at Ramsey-Washington Metro Watershed District.

## Land Acknowledgment Statement

The City of Shoreview is committed to being a welcoming and inclusive community and has been working to make positive, intentional progress towards that commitment. Last fall, the city council took a momentous step by formally approving a land acknowledgement statement. By doing so, the city recognizes and honors the Indigenous Peoples as the traditional stewards of this land.

*The identity of any community is forged by the generations who have lived there in the past and present, bringing with them their cultures, beliefs, energy, and dreams. Many travel to new places in the hope of a better life, others arrive against their will, and some have been there for thousands of years.*

*The City of Shoreview acknowledges that our community stands on the ancestral, traditional, and current homelands of the Dakota. We also want to acknowledge the Ojibwe and other nations of people who called this place home. The U.S. government seized Dakota and Ojibwe land in Minnesota, allowing pioneers to settle in what is now Shoreview. This land was acquired unfairly through land cession treaties. The city acknowledges the history of violence, displacement, migration, and forced re-settlement of Indigenous Peoples.*

*The city is aware that this land has a complex and layered history, and offers this statement as a step toward healing. Our goal is to better understand the history of the land on which Shoreview is built and the convergence of legacies that bring us to where we are today.*

The city offers the statement as a step towards healing. It is committed to learning more about the history of this land and ways to recognize, support, and collaborate with Indigenous Peoples. The human rights commission is currently working on an action plan to accompany the statement.







## Spring Cleanup Day

OPEN TO SHOREVIEW RESIDENTS ONLY

**Saturday, May 18, 2024**  
**7 am - noon**

McCullough Park  
955 County Road I  
(Enter from westbound County Rd I)

### ITEMS ACCEPTED:

- Appliances
- Bikes
- Tires (limit 4)
- Electronics
- Water softeners
- BBQ grills
- Lawnmowers
- Snow blowers
- Carpeting
- Mattresses/box springs (limit 2)
- Vacuum cleaners
- Furniture

### FEES:

Cash or check only.

- Passenger vehicle: \$35
- Trailers: \$50
- Oversized loads: \$120 (includes u-haul vehicles)

### ITEMS NOT ACCEPTED:

- Household hazardous waste (including paint, chemicals, fluorescent bulbs, automotive fluids)
- Brush/yard waste
- RV refrigerators
- Oversized items such as hot tubs, boats, or sheds
- Engines containing gasoline or oil
- Materials from private contractors.

For more information on cleanup day: 651-490-4650 [shoreviewmn.gov/cleanupday](https://shoreviewmn.gov/cleanupday).

For more information on other disposal options: 651-633-EASY or [ramseyrecycles.com](https://ramseyrecycles.com)

## GREEN COMMUNITY AWARDS

Did you install solar panels, plant a native garden, or do another environmentally friendly project this year?

Apply for a Green Community Award! Each year, the Shoreview Environmental Quality Committee recognizes residents and businesses that have had a positive impact on our environment. The green community awards are given to those who improve water quality, install renewable energy, or use eco-friendly practices. Winners receive a small lawn stake and are recognized at a city council meeting in early fall.

Applications are available at [shoreviewmn.gov](https://shoreviewmn.gov) and due by July 12. Questions? 651-490-4665.



# 2024 Annual Tree Sale

Order now for the 2024 Shoreview tree and shrub sale. Trees are an important part of your yard and our urban landscape. Planting a wide variety of trees and shrubs increases diversity and improves resilience in yards and the community.

Residents can purchase up to 5 trees and 10 shrubs per household at wholesale prices. One watering bag per tree is also available. Watering bags are not suggested for evergreen trees or shrubs.

Orders are due Friday, April 12, 2024 and trees will be delivered to your home by crews in late May. Orders can also be placed online. Wholesale trees and shrubs do not include a guarantee; please be prepared to plant and care for the trees.

## 2024 TREE AND SHRUB ORDER FORM

Name: \_\_\_\_\_

Address: \_\_\_\_\_

Phone: \_\_\_\_\_

Email: \_\_\_\_\_

SPECIES	CONTAINER SIZE	HEIGHT (FEET)	WIDTH (FEET)	SHADE TOLERANCE	FALL COLOR	PRICE	QTY	SUBTOTAL
Iroquois Beauty Chokeberry	#5	3 – 4'	3 – 5'	Full sun to part shade	Red-gold	\$36		
Blue Muffin viburnum	#5	5 – 7'	5 – 7'	Full sun to part shade	Yellow-red	\$36		
Northern redbud	#10	20 – 30'	20 – 25'	Full sun to part shade	Yellow	\$154		
Ironwood	#10	30 – 50'	25'	Full sun to part shade	Yellow	\$164		
Hackberry	#10	50 – 75'	50'	Full sun	Yellow	\$123		
Swamp white oak	#10	50 – 60'	50 – 60'	Full sun	Orange-yellow	\$164		
Techny arborvitae	#10	12 – 15'	6 – 8'	Full sun to part shade	Dark green	\$113		
Eastern white pine	#10	50 – 80'	20 – 40'	Full to part sun	Green	\$119		

For deciduous trees only, tree watering bag: Holds 20 gallons \$21



Shrubs



**IROQUOIS BEAUTY  
CHOKEBERRY**

A compact, rounded shrub known for its abundant white flowers and dark fruit. Beautiful fall foliage. Wide range of soil tolerance.



**BLUE MUFFIN  
VIBURNUM**

A compact selection of arrowwood viburnum. Clusters of white flowers in spring. Good for borders and screening.

Deciduous trees



**NORTHERN REDBUD**

A selection from the Minnesota Landscape Arboretum. Pink flowers emerge in early spring before heart shaped leaves come out. Prefers moist, well-drained soils.



**IRONWOOD**

A medium-sized, tough, native tree with small fruits that look like hops. Prefers moist, well-drained soils, but will tolerate dry sites once established.



**SWAMP WHITE OAK**

A durable, native tree that is drought resistant and adaptable to most soils. Dark green summer leaves turn orange-yellow in fall.



**HACKBERRY**

A fast-growing, large tree with uniquely textured bark. Small purple berries generally stay on trees over winter. Adaptable and tolerant of a variety of conditions.

Evergreen trees



**TECHNY ARBORVITAE**

A dense evergreen with pyramidal form. Dark green foliage that holds color year round. Tolerant of a variety of soil types.



**EASTERN WHITE PINE**

Fast-growing, large, adaptable evergreen with soft blue-green needles. Ideal for windbreak or screening. Susceptible to deer grazing.

Watering



**TREE WATERING BAG**

The tree watering bag is a slow release watering system for trees. One watering bag holds approximately 20 gallons of water and drips 6-10 hours with two holes open, reducing watering frequency by 50% and significantly reducing transplant shock.





## SHOREVIEW COMMUNITY FOUNDATION YOUR SUPPORT MAKES A DIFFERENCE!

Last summer friends of the Shoreview Community Foundation gathered at the Haffeman Pavilion to celebrate fifteen years of awarding grants to non-profit organizations in Shoreview that serve in following areas:

- Human services
- Arts and cultural experiences
- Educational opportunities
- Community enhancement and leadership development
- Recreational places such as parks and trails
- Historical preservation

For the first time this past fall, the foundation awarded a second round of grants!

- **The Lakeshore Players Theatre**, who will hold a two-week Under Construction theater summer camp in June 2024 at Chippewa Middle School, ending with three public performances.
- **Shoreview Parks and Recreation**, to continue and grow in-person caregiver support with two programs: a free, monthly dementia caregiver support group with respite care, and a six-week program conducted by The Normandale Center for Healing called Powerful Tools for Caregivers.
- **The Shoreview/Arden Hills Lions Club**, to support their goal of creating welcome gift baskets for newcomers to the community to let them know about the many civic and public organizations available to our residents.

Thanks to your financial support, we can fulfill our mission to “maintain, enhance, and enrich the quality of life in Shoreview by connecting the generosity of people who appreciate Shoreview with the evolving needs of the community.”

We hope you will consider making a donation to the Shoreview Community Foundation.

Contact us at [shoreviewcommunityfoundation.com](http://shoreviewcommunityfoundation.com).



### MEETING BROADCAST SCHEDULE

Channel 16 broadcasts live city council and planning commission meetings every month.

#### Live Shoreview City Council Meetings

- First and third Monday every month at 7 pm

#### Live Shoreview Planning Commission Meetings

- Fourth Tuesday of the month at 7 pm

View the full schedule and replay information at [shoreviewmn.gov](http://shoreviewmn.gov). Council and planning commission meetings can be streamed live at [shoreviewmn.gov/agendas](http://shoreviewmn.gov/agendas).

Like

Follow

Share

@cityofshoreview



### ACCESS SHOREVIEW

Sign up to receive our online newsletter that is sent after each meeting with news and events.

Visit [bit.ly/AccessShoreview](http://bit.ly/AccessShoreview)



# PARKS & RECREATION



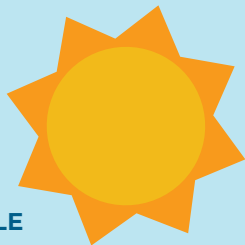
## Register for spring programs in CivicRec!



Create your account at [shoreviewmn.gov](http://shoreviewmn.gov)\*

*\*members accounts have already been created*

## Registration Schedule



Registration begins at 8 am

### SPRING REGISTRATION SCHEDULE

- Tuesday, March 5:** Shoreview residents
- Thursday, March 7:** Annual community center members
- Friday, March 8:** General registration

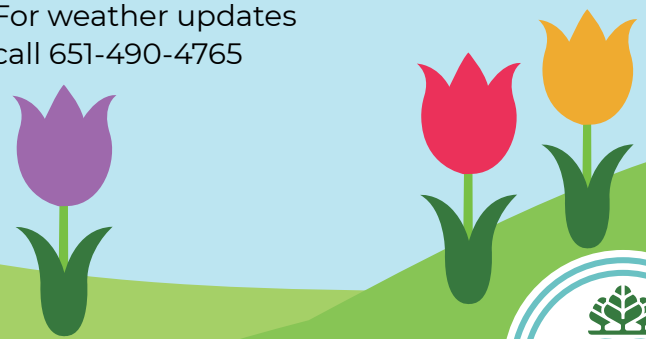
### CONTACT US

Parks & Rec  
 Monday – Friday: 8 am – 4:30 pm  
 651-490-4750  
[recreation@shoreviewmn.gov](mailto:recreation@shoreviewmn.gov)



### WEATHER UPDATES

For weather updates call 651-490-4765



- Visit [shoreviewmn.gov/parks-rec](http://shoreviewmn.gov/parks-rec).
- Click "register online"
- Select Login/Create account on your desktop or mobile device
- Create your SVMN account
- Fill in all required information
- Add additional household members and click "save"
- If you are a Shoreview resident, enter your zip code and change your city to Shoreview

### POLICIES

- Five days notice required for cancellations
- Cancellation fee \$5 – \$10 depending on the program
- No refunds for missed classes
- Scholarships available for Shoreview residents; Restrictions apply



# Membership Rates & Benefits



## MEMBERSHIP FEES

### Annual Membership<sup>1</sup> (with one year membership agreement)

	FAMILY	DUAL	ADULT	YOUTH/SENIOR
Rate	\$971	\$825	\$572	\$464
Shoreview resident*	\$725	\$645	\$425	\$360
Military*	\$930	\$790	\$545	\$445
Military resident*	\$700	\$620	\$415	\$350

### Annual Membership Billed Monthly<sup>1</sup>

(with one year membership agreement)

	FAMILY	DUAL	ADULT	YOUTH/SENIOR
Rate	\$88	\$74.75	\$52.50	\$46.25
Shoreview Resident*	\$70	\$62	\$41.50	\$35
Military*	\$83.50	\$71	\$50	\$44.25
Military Resident*	\$67	\$59	\$40	\$33

<sup>1</sup> \$100 early cancellation fee. \* Sales tax is included in price.

### Seasonal Membership (Three months)

	FAMILY	DUAL	ADULT	YOUTH/SENIOR
Rate	\$362.25	\$343.25	\$242	\$187.50
Shoreview resident*	\$277	\$255	\$180	\$150

\* ID required for military and resident rates.

Military rate not available for seasonal memberships

- Seniors: 65 & older
- Youth: 17 & younger
- Dual membership is two people living in the same household. Family is two adults plus dependent children under 23 living in same household.
- Fees are subject to change.
- We accept payment by any major debit/credit card.

### Annual membership includes unlimited use of:

- Fitness center (14 years and older)
- Shoreview waterpark, including tropics and bamboo bay
- Indoor playground (Ages 1 – 10)
- Indoor track (14 years and older)
- Basketball courts
- Whirlpool (18 years and older)
- Members registration day and the ShoreViews home mailing.





# General Information and Hours

Hours and rates are subject to change. Visit [shoreviewmn.gov](http://shoreviewmn.gov) for the latest information.

## DAILY RATES:

All guests must pay admission; this includes all non-swimming guests and adults in the playground and gymnasium.

**Children 12 and under must be supervised by an adult while in the community center.**

DAILY PASS	RATE	SHOREVIEW RESIDENT	MILITARY	MILITARY RESIDENT
Adult (18 and older)	\$13.50	\$10.25	\$10.75	\$9.50
Youth (1 to 17)	\$12	\$9	n/a	n/a
Seniors (65 and older)	\$12	\$9	\$10.25	\$8.50

INDOOR PLAYGROUND ONLY	RATE	SHOREVIEW RESIDENT
All visitors*	\$6.75	\$6.25

\*All playground visitors must pay admission; this includes supervising adults.

COUPON BOOKS (10 DAILY PASSES)	RATE	SHOREVIEW RESIDENT
Adult	\$121.50	\$92.25
Youth/Senior	\$108	\$81
Indoor Playground	\$60.75	\$56.25

SENIOR TRACK DISCOUNT (65 & OLDER)	RATE	SHOREVIEW RESIDENT
Track use only		
Punch card (includes 10 visits)	\$54	\$45

Fees are subject to change. We accept any major debit/credit card. All rates above include sales tax. Visit [shoreviewmn.gov](http://shoreviewmn.gov) for updates.



## POOL HOURS

The waterparks, lap swim, and open swim are available at various times throughout the week.

See the service desk for a schedule or visit [shoreviewmn.gov/waterpark](http://shoreviewmn.gov/waterpark).

## KIDS CARE

Child care is available for community center customers. See page 22 for details.



## DROP-IN VOLLEYBALL

Sunday, 8 – 10 am  
Tues & Thurs, noon – 1 pm

No Volleyball March 12 & 14,  
March 31 and April 11.



# Building Hours



## CALL FOR MORE INFORMATION

Community center	651-490-4700
Recreation programs (classes)	651-490-4750
Rental information	651-490-4790
Pool rental information	651-490-4780
City information	651-490-4600

[shoreviewcommunitycenter.com](http://shoreviewcommunitycenter.com)



## HOURS

Children 12 & under must be supervised by an adult while in the community center.

DAYS	COMMUNITY CENTER	PLAYGROUND
Monday – Friday	5 am – 9 pm	8 am – 8 pm
Saturday	6 am – 8 pm	noon – 7 pm
Sunday	6 am – 8 pm	noon – 6 pm

## HOLIDAY HOURS

DATES	COMMUNITY CENTER	PLAYGROUND
March 31	6 am – noon	8 am – noon
May 27	5 am – noon	8 am – noon

## POOL HOLIDAY HOURS

DATES	TROPICS	BAMBOO BAY
March 31	closed	closed
May 27	closed	closed

View the full pool schedule at: [shoreviewmn.gov/waterpark](http://shoreviewmn.gov/waterpark)





## WEDELL COMMUNITY ROOM

- Maximum capacity of 250 people
- Choose your own licensed caterer
- Alcohol service available with in-house provider
- \$1,000 refundable reservation deposit

DAYS	RATE	SHOREVIEW RESIDENT
Sun – Thurs	\$715	\$590
Friday	\$1,105	\$950
Saturday	\$1,375	\$1,205

## HALF COMMUNITY ROOM

- Available Sunday – Thursday
- Maximum capacity of 100 people
- \$500 refundable reservation deposit

DAYS	RATE	SHOREVIEW RESIDENT
Sun – Thurs	\$425	\$390

## SHOREVIEW ROOM

- Maximum capacity of 300 people
- Choose your own licensed caterer
- Alcohol service available with in-house provider
- \$1,000 refundable reservation deposit

DAYS	RATE	SHOREVIEW RESIDENT
Sun – Thurs	\$1,000	\$855
Friday	\$1,465	\$1,300
Saturday	\$1,820	\$1,600

*Additional fees may apply  
Fees are subject to change*

*Book your  
2024  
event now*

## Summer Saturday Package

### Package includes:

- Shoreview room & deck
- Haffeman pavilion & Garden space

### Saturdays, May-September

Shoreview resident \$2,000

Non-residents \$2,200

\$1,000 refundable reservation deposit



## HAFFEMAN PAVILION & GARDEN SPACE

- Permanent picnic tables seat up to 120 guests
- Located in Commons Park, behind the community center
- Indoor room with air conditioning, restrooms, fireplace and additional seating for up to 30 guests
- Decorative pond with fountain and benches
- Ideal for ceremonies, parties & family reunions
- \$500 refundable damage deposit

Days	Month	Rate	Shoreview Res
Fri or Sun	May – Sept	\$550	\$500
Mon – Sun	Mar, Apr, Oct, Nov	\$440	\$400

## PARK SHELTERS

Small shelters are available at most Shoreview parks. The daily rental fee is \$50.

Reserve online at [shoreviewmn.gov](https://shoreviewmn.gov).

Park shelter	Capacity
Bucher	4 tables; up to 24 people
Lake Judy	2 tables; up to 15 people
McCullough	2 tables; up to 15 people
Shamrock	5 tables; up to 40 people
Sitzer	4 tables; up to 32 people
Commons	3 tables; up to 20 people

The following parks are owned and operated by Ramsey County Parks & Recreation.

For more information call 651-266-0300 or visit [ramseycounty.us](https://ramseycounty.us).

- Island Lake County Park
- Lake Owasso County Park
- Snail Lake County Park
- Turtle Lake County Park

Additional fees may apply — fees are subject to change

### CONTACT US

Monday – Friday  
9 am – 4:30 pm  
651-490-4790

[rentals@shoreviewmn.gov](mailto:rentals@shoreviewmn.gov)



### BAMBOO BAY EXCLUSIVE

- Exclusive access to Bamboo Bay waterpark and cabanas
- Admission included for up to 50 people
- 30 days notice required
- \$175 refundable damage deposit

Day	Time
Friday*	5 – 7:30 pm
Sunday	9 – 11:30 am

\*Friday Bamboo Bay Exclusive parties have the option of adding on use of Tropics Waterpark for an additional \$125

Total guests	No food	You provide food
50	\$700 + tax	\$800 + tax

### INDOOR PLAYGROUND EXCLUSIVE

- Exclusive use of the indoor playground
- Includes playground admission
- Table seating for 12 guests; up to 75 people allowed in the playground
- \$100 refundable damage deposit

Days	Time
Saturday & Sunday	9 am – noon

Total guests	No food	You provide food
75	\$425 tax incl	\$525 tax incl



# Birthdays & Meetings



Admission is included with these birthday party options. Visit [shoreviewmn.gov](http://shoreviewmn.gov) to learn more or call 651-490-4790 to book your party.

## POOLSIDE CABANA

- Semi-private space, located in Bamboo Bay waterpark
- Seating for 16 guests
- Includes 16 admission wristbands
- \$100 refundable damage deposit

Day	Duration	Rate	Shoreview resident
Sat – Sun	3 hours	\$450 tax incl	\$400 tax incl
Tues, Thurs*	2 hours	\$240 tax incl	\$200 tax incl

\*Bamboo Bay access only

## POOLSIDE PARTY ROOM

- Private room, located downstairs
- Seating for 32 guests
- Includes 32 admission wristbands
- \$100 refundable damage deposit

Day	Duration	Rate	Shoreview resident
Sat	3 hours	\$625 tax incl	\$575 tax incl
Fri, Sun	2 hours	\$565 tax incl	\$515 tax incl

## PLAYGROUND PARTY AREA

- Semi-private space, located in playground
- Seating for 12 guests
- Includes 12 admission wristbands (playground-only)
- \$100 refundable damage deposit

Day	Duration	Rate	Shoreview resident
Any	3 hours	\$235 tax incl	\$215 tax incl

*All weekday rentals that fall on a Mounds View no school day are weekend rental prices and times.*

## ACTIVITY ROOM

- Private room, located upstairs
- Large windows with natural lighting
- Seating for 24 guests
- Includes 24 admission wristbands (Fri – Sun)
- Adjacent room available for extra fee
- \$100 refundable damage deposit

Day	Duration	Rate	Shoreview resident
Mon – Thurs	2 hours	\$100	\$90
Fri – Sun	3 hours	\$500 tax incl	\$450 tax incl

## MEETING ROOMS 1 – 3

- Private room, located upstairs
- Seating for 16 guests
- Includes 16 admission wristbands (Fri – Sun)
- Adjacent rooms available for extra fee
- \$100 refundable damage deposit

Day	Duration	Rate	Shoreview resident
Mon – Thurs	2 hours	\$75	\$60
Fri – Sun	3 hours	\$350 tax incl	\$300 tax incl

## MEETING ROOM 4

- Private room, located upstairs
- Seating for 16 guests
- Not available for birthday parties
- \$100 refundable damage deposit

Day	Duration	Rate	Shoreview resident
Mon – Sun	2 hours	\$100	\$90





**Group Fitness drop-in rate:**  
**Regular: \$11.50, SV Res: \$10.50**

### GROUP FITNESS CLASSES

- Please check class schedule at the beginning of the month
- Refunds are issued for medical reasons only
- Membership is not required
- SeniorFIT classes are free to seniors with a paid annual senior membership.
- All classes are 50 to 60 minutes unless otherwise noted
- Classes with three participants or fewer are subject to change or cancellation
- Group fitness classes are great for all levels
- Find out which classes best suit your needs by calling the fitness coordinator at 651-490-4768

**Call for information: 651-490-4750**

### GROUP X CARDS

- Good for all fitness classes
- Class schedule is available online and at the community center
- Purchase at the parks & recreation desk or by phone at 651-490-4750 during office hours (Monday – Friday, 8 am – 4:30 pm)
- You can reload your Group X Card in person or by phone at 651-490-4750
- Go online to [shoreviewmn.gov/fitness](http://shoreviewmn.gov/fitness) to reserve your spot using SignUpGenius today!

QUANTITY	REGULAR	ANNUAL MEMBER	RESIDENT	RESIDENT ANNUAL MEMBER
5 Classes	\$54	\$38	\$49	\$34
10 Classes	\$104	\$73	\$95	\$67
25 Classes	\$255	\$179	\$232	\$162
50 Classes	\$488	\$342	\$443	\$310

- One Group X Card allowed per person.
- Cards are non-refundable and non-transferable.
- Member discount applies to annual memberships only. One-time drop-in passes are available at the lower-level service desk the day of class.
- SeniorFIT do not require registration.



# Group Fitness



## GROUP FITNESS CLASSES

- 60/40
- Barre principle
- The resistance workout
- Step cardio
- Dance jam
- Fundamental combo
- H.I.I.T. (High Intensity Interval Training)
- The Groove
- Kettlebell training
- Power strength
- Cycle rave
- Cycle training
- Total body workout
- Power pump
- Cardio kickboxing
- Zumba®

**New!** *Aqua Splash classes*  
See page 36

## MIND/BODY CLASSES

- Stretch and balance
- Yin/restorative yoga
- Yoga basics
- Hot yoga - Class temp range is 80 – 90 degrees.
- Fitness Pilates
- Power yoga
- Yoga/Pilates fusion
- Yoga sculpt



Scan the code to view group fitness class descriptions.

## WATER FITNESS CLASSES

All water classes are held in the pool.

- The pool is between 3 1/2 and 4 1/2 feet deep
- All fitness levels are welcome
- The pool temperature is between 83 – 84 degrees
  - Aqua fit
  - SeniorFIT aqua exercise

## KIDS CARE

Kids Care provides a stimulating and safe environment for children 6 months to 12 years of age. Kids can explore and interact with other kids while you enjoy the community center's amenities. First come, first served.

- Max 2 hour stay (must stay in the building)
- Kids Care phone number: 651-490-4763

### CLOSED

May 27

### HOURS

Monday – Saturday:  
8 am – 12:30 pm

Monday – Thursday:  
4 – 8 pm

Friday: 4 – 7 pm

### COST

\$3 per hour drop-in rate  
(no pro-rating for partial hours)

## KIDS CARE UPDATES

KIDS CARE payments have transitioned to a punch card system

- Purchase at the parks and recreation desk, community center sales office, or online
- \$2 per hour rate for punch cards (punch cards are available for purchase in quantities of 10, 25, or 50 hours)
- \$3 per hour drop-in rate (paid at the community center service desk)
- Punch cards are non-refundable

## PUNCH CARD

10 hours: \$20  
25 hours: \$50  
50 hours: \$100





**SENIORFIT CLASSES**

SeniorFIT classes are free to annual senior members. If you are not an annual senior member, you may purchase a Group X Card or a drop-in pass. See page 21 for Group X Card information.

All fitness levels are welcome.

- **SeniorFIT chair yoga**
- **SeniorFIT strength training**
- **SeniorFIT aqua exercise**
- **SeniorFIT let's move**



*Scan the code to view SeniorFIT class descriptions or visit online at [shoreviewmn.gov](http://shoreviewmn.gov)*

**SPRING SESSION:**

April 4 - May 24

Registration is not required.

CLASS/INSTRUCTOR	DAY	TIME
Chair yoga: Beth	Monday	8:30 am
Aqua exercise: Fran	Monday	9 am
Strength training: Nancy/Perry	Tuesday	8:30 am
Chair yoga: Scott	Tuesday	2 pm
Chair yoga: Gretchen	Wednesday	8:30 am
Aqua exercise: Fran	Wednesday	9 am
Let's move: Nancy/Perry	Thursday	8:30 am
Strength training: Denise	Friday	8:30 am
Chair Yoga: Adrienne	Friday	9:30 am



## COMMUNITY CENTER MEMBER EQUIPMENT ORIENTATION (INDIVIDUAL OR GROUP)

Get introduced to fitness center equipment and learn how to utilize strength and cardio equipment safely. The schedule and sign-up sheet for equipment orientations is located at the fitness center desk.

For more information call 651-490-4768.

AGES	COST
14+	Free to members

## PERSONAL TRAINING

- Personal training comes in packages of 3, 6 and 12 sessions
- All sessions expire one year from the date of purchase
- Trainers help you set realistic goals and determine safe strategies to achieve them
- Trainers will customize a program to fit your ability and health
- Trainers monitor progress and adapt your routine for consistent improvement
- Learn fitness principles and correct form to aid in progress and prevent injuries

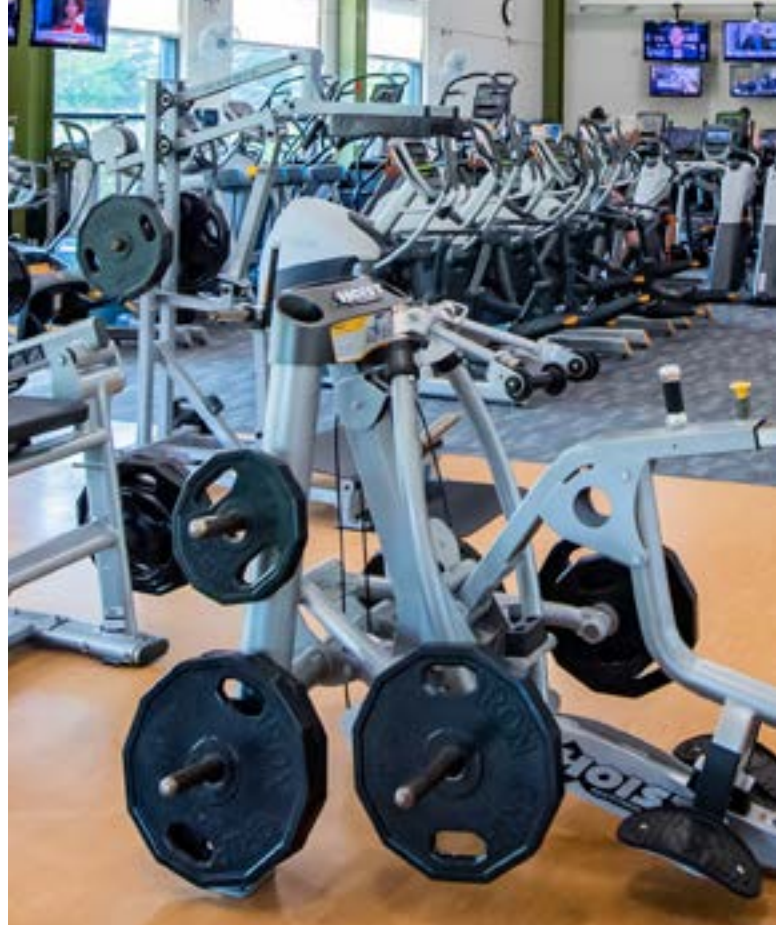
## INDIVIDUAL PERSONAL TRAINING

SESSIONS	REGULAR	RESIDENT
3	\$243	\$219
6	\$460	\$414
12	\$871	\$784
24	\$1,648	\$1,446

## BUDDY PERSONAL TRAINING

Two participants train together and each pay the fee below.

SESSIONS	REGULAR	RESIDENT
3	\$186	\$167
6	\$346	\$311
12	\$655	\$590







## SHOREVIEW AREA PICKLEBALL CLUB

Name tag with 2024 sticker must be worn for proof of membership. The club will email you with details about etiquette, name tag pick-up, clinics, and more. Verify and update your email address.

The season runs May-October, weather permitting. Pickleball club membership does not include community center or Island Lake School drop-in play.

### Club Benefits

- Dedicated play time
- Balls and nets
- Free beginner instruction\*
- Organized ladder tournaments\*
- Name tag
- Spring and Fall socials
- Tournaments and prizes

LEVELS	LOCATION	COURT HOURS	CLUB COST
Beginner & social players	Commons Park	Mon – Fri, 8:30 – 11 am Tues & Thurs, 6 – 8 pm	\$27; \$20 SV Res
Competitive intermediate & advanced (3.5+)	Bobby Theisen Park	Mon, Wed, Thurs, Fri 8:30 – 11 am	\$27; \$20 SV Res

## DROP-IN PICKLEBALL

All are welcome! You do not need to be a member of the Shoreview Area Pickleball Club for indoor drop-in play.

**Pickleball punch card:** cost \$50 (11 visits)

- Punch cards are good for both drop-in locations.
- Available for purchase at the parks and recreation office

**Office hours:** Monday – Friday, 8 am – 4:30 pm

AGE	LOCATION	DATE & TIME	COST
18+	Community Center	Mon – Fri, Oct 2 – April 26* 8 – 11 am	FREE to SCC members, \$5 for non-members
18+	Island Lake Elementary	Wednesdays Oct 4 – May 8 5:30 – 9:30 pm	\$5 per person (cash only)

\*No pickleball: Mar 11 – 15, April 10 – 12



# Adult Programs



## FREE TEN-MINUTE FUNCTIONAL BALANCE SCREENING

### BY OSI PHYSICAL THERAPY

Make an appointment for an in-person screening to measure your fall risk and identify areas to strengthen. Past participants are fans and recommend the evaluation to their friends. You can re-test to see your progress.

#### EVALUATE:

- Static and dynamic balance systems to establish fall risks
- Identify any areas that could benefit from focused strength training
- Identify simple assistive devices

Ten minute appointments available from 9 – 10 am. Register online or call 651-490-4714.

**Location:** community center

**Registration deadline:** one week before class

AGES	DATE & TIME
50+	Tues, March 5
50+	Tues, April 2
50+	Tues, May 7
50+	Tues, June 4

By appointment only.

## Adult Program Newsletter

Sign up to receive a copy of our quarterly adult activities newsletter. It contains additional program offerings, interesting articles, and more. Call 651-490-4714 to join our mailing list.



#### Friends & Co!

Little Brothers Friends of the Elderly is now Friends & Co! The new name expresses all that they do: fostering friendships, connections, companionship and community. Their new name and logo convey their compassionate nature and focus on meaningful connections for older adults.

[FriendsCo.com](http://FriendsCo.com) 612-721-1400

## ALZHEIMER'S ASSOCIATION

Helpline 24/7/365 • 800-272-3900

Dial 711 for a TRS operator

Helpline specialists and clinicians offer confidential support and information to people living with the disease, caregivers, families and the public.

**Call:** We are available in any language around the clock, at 800-272- 3900.

Visit [Alz.org](http://Alz.org), for additional resources

**E-Chat:** Visit [Alz.org](http://Alz.org), click the green “we’re here to help” button to connect with Helpline staff. Live chat is typically available from 7 am – 7 pm (CST) Monday - Friday.

## Meals On Wheels

The Meals On Wheels program is available to eligible seniors and certified, disabled individuals (regardless of age) who live in Mounds View School District 621. Hot, nutritious noon meals are delivered by volunteers Monday through Friday, except on holidays. For more information, call 651- 621-7950.

## Senior LinkAge Line

800-333-2433

A free state-wide resource supporting older Minnesotans and their caregivers. Get connected to local resources, housing, Medicare information, and free classes. Senior LinkAge line is a division of the MN Board on Aging; working to ensure that all Minnesotans can age and live well.



## AARP SMART DRIVER

Taught by AARP trained instructors, Smart Driver teaches safe driving techniques to help keep you and your loved ones safe on the road. Insurance discounts for those 55+ after completing the eight-hour introductory course. A four-hour refresher course is required every three years. Have your AARP member number ready for a registration discount.

**Location:** community center

**Registration deadline:** one week before class

### 4-HOUR REFRESHER COURSE

AGES	DATE & TIME	COST
55+	Wed, March 27 1 - 5 pm	\$33; \$26 AARP member
55+	Thurs, April 11 9 am - 1 pm	\$33; \$26 AARP member
55+	Tues, April 30 1 - 5 pm	\$33; \$26 AARP member
55+	Tues, May 21 9 am - 1 pm	\$33; \$26 AARP member
55+	Wed, June 5 9 am - 1 pm	\$33; \$26 AARP member
55+	Thurs, June 20 9 am - 1 pm	\$33; \$26 AARP member

### 8-HOUR COURSE

AGES	DATE & TIME	COST
55+	Mon & Tues, March 4 - 5 9 am - 1 pm	\$33; \$26 AARP member
55+	Tues & Wed, May 7 - 8 1 - 5 pm	\$33; \$26 AARP member

## DEMENTIA CAREGIVER SUPPORT GROUP WITH RESPITE CARE

This support group is led by a trained facilitator from Alzheimer's Speaks. Your loved one can enjoy activities in a nearby room. The program is free. Registration requested but drop-ins are welcome if space is available. This program made possible with a grant from the Shoreview Community Foundation.

**Location:** community center

AGES	DATE & TIME	COST
18+	Wed, March 27, 10 - 11:30 am	Free
18+	Wed, April 24, 10 - 11:30 am	Free
18+	Wed, May 29, 10 - 11:30 am	Free
18+	Wed, June 26, 10 - 11:30 am	Free

## AARP Smart Drivers Volunteers Needed

Do you have a passion for helping others and want to be a part of a team making your community safer? Consider the AARP Smart Driver instructor team.

It's fun, engaging and free training is provided. Make a difference in the Shoreview community.

Learn more and sign up now at [aarp.org/volunteernow](http://aarp.org/volunteernow).



Become an AARP driver  
safety volunteer **TODAY!**



# Adult Programs

# MAH JONGG

## OPEN MAH JONGG CLUB

Bring your friends and your tiles for drop-in play. All levels welcome!

**Location:** community center fireside lounge

No registration required

AGES	DATE & TIME	COST
18+	Thursdays, 1 pm	Free

## MAH JONGG BEGINNER LESSONS

Retired teacher and avid Mah Jongg player, Tarri Levine will bring you into the world of Mah Jongg. Mah Jongg helps maintain good brain health, memory and opportunities to socialize. Mah Jongg is similar to Gin Rummy but played with tiles instead of cards. Tiles and handouts provided.

## BEGINNER MAH JONGG

Learn rules, strategies and etiquette while playing the game. The class will be taught using previous National Mah Jongg League cards.

**Location:** community center

**Registration deadline:** one week before class

AGES	DATE & TIME	COST
18+	Tues & Thurs, May 7 & 9 9 am - noon	\$66; \$60 SV Res

## INTERMEDIATE MAH JONGG

New Card! New Hands! New Strategies! Bring your new 2024 NMJL card or borrow one during class.

**Location:** community center

**Registration deadline:** one week before class

AGES	DATE & TIME	COST
18+	Tues & Thurs, May 14 & 16 9 am - noon	\$66; \$60 SV Res

# 500

## CARD CLUB

Join us for cards and conversations

No partner required.

Located in the community center fireside lounge

**Mondays at 12:30pm**

# FREE!



# Adult Programs



## BOB ROSS PAINTING CLASSES

Famous for encouraging everyone to try painting, Bob Ross's legacy lives on in these classes. There are no mistakes, just happy accidents. Experience painting the Bob Ross way with a landscape method certified instructor, Valarie Namen.

All materials included to make a 12x16 painting;  
no experience needed.

**Location:** community center

**Registration deadline:** one week before class

AGES	DATE & TIME	CLASS	COST
12+	Tues, April 30 5 – 9 pm	Northern Lights	\$63; \$57 SV Res
12+	Tues, May 21 5 – 9 pm	Happy Little Trees -Birches	\$63; \$57 SV Res

## CREATE ARTISTIC DRINK COASTERS WITH ALCOHOL INK

Create a set of drink coasters with a process using alcohol inks. Leave with a set of four unique usable works of art!

**Location:** community center

**Registration deadline:** one week before class

AGES	DATE & TIME	COST
12+	Thurs, March 21 6 – 8 pm	\$63; \$58 SV Res

## LEARN TO PAINT

No experience necessary. Use easy to learn one-stroke painting with acrylics. Class includes step-by-step instruction and painting supplies. You'll leave with your very own masterpiece!

**Location:** community center

**Registration deadline:** one week before class

AGES	DATE & TIME	CLASS	COST
18+	Mon, March 11 1 – 4 pm	Birdhouse floral	\$66; \$60 SV Res
18+	Mon, April 8 1 – 4 pm	Welcome spring	\$48; \$44 SV Res



# Adult Programs



## HOUSING FAIR

Tuesday, May 7  
2 – 4:30 pm

Are you or a loved one moving?

Visit representatives from various senior living developments, in-home care and traditional options available. Free to attend at the community center!



Interested vendors can contact  
651-490-4714 for more information

## GARAGE-STYLE PARKING LOT SALE

Sunday, April 21 | 2 - 5 pm

Come find your next treasure at the parking lot sale! This garage-style sale will have something for everyone. And best of all, you're re-using.

### Sell

Set up your own garage-style sale in our parking lot! Limited space is available.



Registration deadline: April 7



see page 39 for more springfest activities

## BETWEEN THE LINES: HISTORY SEMINARS WITH KATHY SIMMER

Explore fascinating topics from America's past. Understand why something happened and how it changed our path, along with the juicy details usually left out of textbooks. Kathy is a retired teacher, a curriculum consultant, and licensed librarian.

Location: community center

Registration deadline: five days before class

AGE	DATE & TIME	COST
18+	Thurs, March 21 1–3 pm	\$19; \$17 SV Res
18+	Thurs, April 4 1–3 pm	\$19; \$17 SV Res
18+	Thurs, May 23 1–3 pm	\$19; \$17 SV Res
	Thurs, June 13 1–3 pm	\$19; \$17 SV Res





## DAY TRIP:

### DAY TRIP: MINNESOTA ORCHESTRA, SØNDERGÅRD, KEEFE WITH THE MINNESOTA CHORAL

Robert Schumann composed his Spring Symphony during the wintertime, dreaming of warmer days to come and the signs of life that would soon abound in nature. Thomas Søndergård conducts this bright, joyful symphony and collaborating with Concertmaster Erin Keefe for a performance of Max Bruch's elegant First Violin Concerto. The Minnesota Chorale will lend their voices to two works on this program, performing Johannes Brahms' Schicksalslied and delivering the U.S. premiere of Eleanor Alberga's Rise Up, O Sun!



ALBERGA, Rise Up, O Sun!  
BRUCH, Violin Concerto No. 1  
BRAHMS, Schicksalslied  
SCHUMANN, Symphony No. 1, Spring

**Location:** Meet at community center.  
New Trax mini-bus leaves at 9:45 am  
**Registration deadline:** March 11

AGES	DATE & TIME	COST
18+	Thurs, April 11 9:45 am – 2 pm	\$72

## DAY TRIP TO:

### CHANHASSEN DINNER THEATER

The Carole King Musical is a Broadway smash! An inspiring true story of Carole King's remarkable journey from teenage songwriter to Rock & Roll Hall of Fame music legend. Take a joy-filled, emotional ride of a lifetime. Featuring over two dozen hits including "One Fine Day," "The Locomotion," "So Far Away," "Natural Woman," "You've Lost That Lovin' Feelin'," and "Will You Love Me Tomorrow," this Tony and Grammy Award-winning musical is filled with the songs you remember and a story you'll never forget. A huge cast of singers and dancers bring more than 24 of her greatest hits to life in a triumphant celebration! Round trip on accessible coach bus with a bathroom.



**Location:** Meet at community center fireside lounge between 10 - 10:25 am. Bus leaves at 10:30 am  
**Registration deadline:** May 1

AGES	DATE & TIME	COST
18+	Wed, June 5 10:30 – 4:30 pm	\$120

## TRAVEL SHOW WITH JEANIE'S JOURNEYS

Jeanie will be talking about some amazing tours for 2024. All prices per person double occupancy & include air/motor-coach.

### UPCOMING TRIPS:

- Norwegian Fjord Cruise
- Italy and Greece Mediterranean Cruise
- Little House on the prairie tour
- Banff
- Niagara Falls
- Memphis
- Christmas Market River Cruise

**Location:** community center  
**No registration needed**

AGES	DATE & TIME	COST
18+	Tues, March 26 1 – 2:30 pm	Free

## LANDMARK TOURS

Landmark Tours is a premier, local, family-owned tour operator. Their inclusive packages feature round-trip airfare.

### UPCOMING TRAVEL OPPORTUNITIES INCLUDE:

- American West, Northern California, Oregon
- New Mexico
- Greece and the Aegean Sea
- Autumn in England
- Australia, Kenya, Iceland
- Oregon
- Chicago

**Location:** community center  
**No registration needed**

AGES	DATE & TIME	COST
18+	Wed, April 16 1 - 2:30 pm	Free



# Swim Lessons



## SHOREVIEW PARKS & RECREATION SWIM LESSONS

Our mission is to provide inclusive swim lessons for everyone. Our fun and imaginative approach to lessons will help you create a lifelong love of swimming. Pick your best learning environment - group lessons or private lessons. Parent-to-instructor communication is key to successful lessons. Our instructors love to teach and receive ongoing training.

### Swim lesson policies

- We do not provide make-up swim lessons for any classes.
- Participants will be emailed specific programs policies before the class starts.

### Cancellation policies & fees

- \$5 if you cancel at least one week before the class start date.
- \$10 if you cancel within one week of the class start date.
- No refunds on or after the class start date.

### A note about swim lessons

- Due to high demand, private lessons are limited to 2 sessions per participant, per session.
- Swim lessons are not canceled if Mounds View School District cancels after school activities due to weather.
- Group classes with fewer than three registered participants will be canceled.
- Students are not allowed to swim before or after lessons.
- Students should use the bathroom and shower before entering the pool area.
- Staff aren't allowed to take students to the bathroom.
- If your child needs a quieter environment to learn, look at our Tuesday, Thursday, Saturday and Sunday lessons.
- Children ages 4 and under may use any locker room.
- Children ages 5 and older must use the same sex locker room or family locker room.
- The pool water temperature is kept at 85 degrees.

## FREE SWIM LESSON CHECKS

Not sure of what level to register your child for? Reserve your time at [shoreviewmn.gov](http://shoreviewmn.gov) If your child has been away for more than three months we recommend repeating the previous level.

### DATE & TIME

Tuesday, February 27, 6 – 7 pm

Saturday, March 2, 10 – 11 am

Thursday, May 2, 5:30 - 7pm

## PRIVATE LESSONS (PR) AGES 3 – ADULT

Private and semi-private lessons offer one-on-one training so you're able to learn at your own pace. Lessons are 30 minutes and available at set times.

NUMBER OF LESSONS	COST	COST SV RES
-------------------	------	-------------

6 lessons	\$161	\$146
-----------	-------	-------

## SEMI-PRIVATE LESSONS

- You must have two people at the same ability for a semi-private lesson
- Register one child for a regular private lesson then visit or call Parks & Rec 651-490-4750 to have the lesson switched to semi-private
- Rate listed per person

NUMBER OF LESSONS	COST	COST SV RES
-------------------	------	-------------

6 lessons	\$121	\$110
-----------	-------	-------

## CUSTOM PRIVATE LESSONS

- Flexible scheduling with three months to complete after first lesson starts
- Option to reschedule with advance notification
- For more information contact the aquatic coordinator at 651-490-4766.
- Rate listed per person

### CUSTOM PRIVATE LESSONS:

NUMBER OF LESSONS	COST	COST SV RES
-------------------	------	-------------

8 lessons	\$242	\$220
-----------	-------	-------

6 lessons	\$215	\$196
-----------	-------	-------

4 lessons	\$141	\$128
-----------	-------	-------

### CUSTOM SEMI-PRIVATE LESSONS:

NUMBER OF LESSONS	COST	COST SV RES
-------------------	------	-------------

8 lessons	\$171	\$156
-----------	-------	-------

6 lessons	\$143	\$131
-----------	-------	-------

4 lessons	\$104	\$93
-----------	-------	------





# Swim Lessons

## Lesson Rates

Group lessons	6 lessons	\$90; \$82 SV Res
Private lessons	6 lessons	\$161; \$146 SV Res
Semi-private*	6 lessons	\$121; \$110 SV Res

\* Two participants of equal ability

Visit [shoreviewmn.gov/parks-rec](http://shoreviewmn.gov/parks-rec) for full swim lesson schedule

### One day a week for six weeks

DAY	DATE	TIME
Monday	April 15 – May 20	5 – 8 pm
Tuesday	April 16 – May 21	5 – 8 pm
Wednesday	April 17 – May 22	5 – 8 pm
Thursday	April 18 – May 23	5 – 8 pm
Saturday	April 13 – May 18	8:30 – 11:40 am
Sunday	April 7 – May 23	8:30 – 11:40 am 6:15 – 7:45 pm

### Two days a week for three weeks

DAY	DATES	TIME
Tues/Thurs	March 19 – April 4	5 – 8 pm

## FREE SWIM LESSONS & WATER SAFETY

It's never too late to learn new skills and water safety tips that can help prevent drowning. We are offering a limited number of free group swim lessons to qualifying individuals. Note: sessions are age based.

### Eligibility requirements:

1. Shoreview residents
2. WIC card or school district letter (must attach proof)

**Location:** community center

**Registration deadline:** one week before class



DAY	AGES	TIME
Saturdays, June 8, 15, 22	3 – 4	9 – 9:45 am
	5 – 6	9 – 9:45 am
	7 – 8	10 – 10:45 am
	9 – 12	10 – 10:45 am



# Swim Lessons



## GROUP LESSONS

Group lessons will have one instructor to a maximum of four students.

- Group lessons are 40 minutes unless noted.
- Parent/child lessons are 30 minutes.

NUMBER OF LESSONS	COST	COST SV RES
6 lessons	\$90	\$82



## PARENT/CHILD LESSONS PARENT/CHILD (PC 1)

AGES 9 MONTHS – 2½ YEARS

- Enter/exit water with assistance
- Blow bubbles & submerge head
- Front/back float with guardian & instructor
- One adult must accompany each child in the water.

## PARENT/CHILD 2 (PC 2)

AGES 2 – 3½

A parent accompanies their child in the water for the first few weeks and gradually reduces participation

- Enter/exit water independently
- Blow bubbles & submerge head
- Front/back float with instructor
- Front/back glides with assistance
- Front/back flutter kicking with instructor



## BEGINNER BEGINNER 1 (B1) AGES 2 ½–4

- Independent entry/exit
- Front/back floats with assistance — 3 seconds
- Front/back glides with assistance
- Front/back flutter kicking with support
- Front crawl arms with face in the water

## BEGINNER 2 (B2) AGES 3 – 5 OR PASSED B1

- Independent front/back floats — 5 seconds
- Front/back glides
- Front/back flutter kicking
- Front crawl arms with flutter kick
- Rhythmic breathing

## BEGINNER 3 (B3) AGES 3 – 5 OR PASSED B2

- Independent front/back floats — 8 seconds
- Independent front/back glides with flutter kicking
- Front/back flutter kicking - 8 yards
- Front crawl with rhythmic breathing with assistance



## BEGINNER 4 (B4) AGES 4 – 6

- Independent front/back floats — 10 seconds
- Independent front glide into front crawl
- Front/back flutter kicking — ½ length
- Front crawl with rhythmic breathing with assistance — 8 yards

## YOUTH BEGINNER (YB) AGES 6 – 12

New to swim lessons or haven't been in lessons for several years

- Independent front/back floats — 10 seconds
- Independent front/back glides with flutter kick
- Front/back flutter kicking — ½ length
- Front crawl arms with rhythmic breathing





## INTERMEDIATE LESSONS

### INTERMEDIATE 1 (I1)

AGES 5 – 7

- Front/back flutter kicking — ½ length
- Independent back glide with flutter kicking
- Flutter kick with rhythmic breathing — ½ length
- Front crawl with rhythmic breathing — ½ length

### INTERMEDIATE 2 (I2)

AGES 5 – 13

- Front glide into front crawl — 8 yards
- Back glide into back crawl — 8 yards
- Front/back flutter kicking — 25 yards
- Back crawl with assistance — 8 yards
- Elementary backstroke kick — ½ length
- Tread water

### INTERMEDIATE 3 (I3)

AGES 5½ – 13

- Front crawl with rhythmic breathing — 25 yards
- Back crawl — ½ length
- Elementary backstroke — ½ length
- Tread water

### INTERMEDIATE 4 (I4)

AGES 5½ – 13

- Front crawl with open turn — 50 yards
- Back crawl — 25 yards
- Elementary backstroke — 25 yards
- Open turn — front
- Whip kick — 25 yards



## ADVANCED LESSONS

### ADVANCED 1 (A1)

AGES 6 – 13

- Front crawl with flip turns — 75 yards
- Back crawl with open turns — 50 yards
- Elementary backstroke — 25 yards
- Breaststroke — 25 yards
- Breaststroke whip kick
- Flip turns

### ADVANCED 2 (A2)

AGES 6 – 13

- Front crawl with flip turns — 100 yards
- Back crawl w/open turns — 75 yards
- Breaststroke w/underwater pull out — 50 yards
- Breaststroke underwater pull out
- Dolphin kick — 25 yards
- Scissors kick — 25 yards

### ADVANCED 3 (A3)

AGES 6 – 13

- Front crawl with flip turns — 150 yards
- Back crawl with open turns — 100 yards
- Breaststroke with underwater pull out — 75 yards
- Butterfly — ½ length
- Sidestroke — 25 yards



## ADULT LESSONS

### ADULT BEGINNER (AB)

AGES 18+

With the guidance of our swim instructors you will learn basic swimming skills in a safe environment while gaining confidence in the water. Participants will learn:

- Front/back floats
- Front/back kicking w/support
- Breathing
- Comfort in water independently



# Aquatic Programs



## JR. LIFEGUARD

Participants interested in beginning their lifeguarding skills will learn about: recognizing a swimmer in distress, rescues for an active swimmer, rule enforcement and customer service, first aid certification.

**Location:** community center

**Registration deadline:** one week before class

AGES	DATE & TIME	COST
13 – 14	Sun, April 14 – May 12 5:30 – 7:30 pm	\$50

## AQUA SPLASH

Grab your little one for some family fun aqua fitness! Experience a resistance workout with a twist; in lieu of traditional equipment you will use your child as resistance!

**Location:** community center

**Registration deadline:** one week before class

KIDS AGES	DATE & TIME	COST
1 – 3	Thurs, April 4 – 25 3 – 4 pm	\$33/pair

No class on April 11

## MERADVENTURES WITH MOM

Create a lifelong memory with your child to celebrate mother's day under the sea with games, challenges, and much more.



We will provide a snack and fun craft to remember your under the sea adventure during the first 30 minutes.

*Mermaid tails and monofins provided.*

**Location:** community center

**Registration deadline:** one week before class

AGES	DATE & TIME	COST
7+	Sun, May 5 10 – 11:15 am	\$45/pair

## SCOUTS BSA SWIM TEST

Complete your BSA swim test before you go to summer camp or Sea Base. Purchase your ticket at [shoreviewmn.gov](http://shoreviewmn.gov).

**Location:** community center

**Registration deadline:** one week before class

AGES	DATE & TIME	COST
ALL AGES	Sun, May 19 6:15 – 7:45 pm	\$5

## KEY LOG ROLLING

Join our single day sessions to learn the basics of log rolling from one of our trained Key Log Rolling instructors! Classes will focus on building and improving skills while helping beginner learn new skills.



**Location:** community center

**Registration deadline:** one week before class

KIDS AGES	DATE & TIME	COST
8+	Thurs, April 18 6:45 – 7:45 pm	\$20
8+	Thurs, May 2 6:45 – 7:45 pm	\$20
8+	Thurs, May 16 6:45 – 7:45 pm	\$20

## BOATING SAFETY

Successful completion of this course meets the requirements for a watercraft operator's permit and may allow you to receive a discount on your insurance. This course is taught by instructors from the U.S. Coast Guard Auxiliary.

Topics include:

- Boating law
- Safe boating and safety equipment
- Navigation
- Trailering, storing and protecting your boat
- Hunting and fishing, water-skiing, and river boating

**Location:** community center

**Registration deadline:** one week before class

AGES	DATE & TIME	COST
12+	Sat, May 18 8 am – 4 pm	\$50/person, (\$25 for a youth with registered adult )





## SCOUTS BSA SWIMMING MERIT BADGE

Scouts learn about:

- Safety when swimming & diving
- How swimming can contribute to overall fitness and health
- Gain some basic competitive swimming skills

Scouts must provide the Swimming Merit Badge pamphlet and certification card.

*Note: All deep-water components will not be completed in this course.*

**Location:** community center

**Registration deadline:** one week before class

AGES	DATE & TIME	COST
11+	Thurs, April 18 5 – 7:30 pm	\$73; \$66 SV Res

## SCOUTS BSA LIFESAVING MERIT BADGE

**Prerequisite:** completed Scouts BSA Swimming Merit Badge. Scouts must provide the Lifesaving Merit Badge pamphlet and certification card.

Scouts learn how to:

- Assist those involved in water accident
- Knowledge in rescue techniques
- Perform and judge when and how to act in an emergency.

*Note: All deep-water components will not be completed in this course.*

**Location:** community center

**Registration deadline:** one week before class

AGES	DATE & TIME	COST
11+	Thurs, April 25 4 – 7:30 pm	\$76; \$69 SV Res

# SCOUTS BSA SWIM TEST

Complete your BSA swim test with your troop before you go to summer camp or Sea Base. Swim tests can be held on Tuesday or Thursday evenings and weekend mornings.

Contact the aquatic coordinator at **651-490-4766** to schedule your troop.

### GUIDELINES FOR SCHEDULING:

- minimum two week notification prior to desired date
- minimum of five people

**LOCATION:** community center  
**COST:** \$5 per person



# kidscorner preschool



ENROLL TODAY!



School year of:

September 9, 2024 – May 22, 2025

Kids Corner offers students fun and educational experiences that help get them ready for kindergarten.

- Classes available for 2 1/2 – 5 years old
- Half day & full day classes offered
- Must be toilet-trained
- Daily snack included
- Calendar follows Mounds View School District 621 non-school days



## SHOREVIEW Farmers Market



### THE BEST LOCAL PRODUCTS!

Now accepting vendors for the 2024 season  
Visit our website for the application.

- Located in the lower level parking lot at the community center
- Farmers market runs Tuesdays through June 4 - August 27, 3 – 7 pm
- Farmers market runs Tuesdays through September 3 - October 8, 3 – 6 pm





## Family Puzzle Challenge

Sunday, April 21 | 2 - 3:30 pm

Get your team of two-four people together and compete to finish a 350-piece nature-themed puzzle in the shortest amount of time.

- Four people per team
- Identical puzzles provided, hidden until start
- The first team to complete and get the judge's approval wins

**Location:** Haffeman Pavilion  
**Registration deadline:** March 28

AGES	DATE & TIME	COST
5+ recommended	Sunday, April 21 2 - 3:30 pm	\$30 per team



**1<sup>ST</sup>** Four community center day pass'



**2<sup>ND</sup>** One community center day pass

# SPRINGFEST

**CELEBRATING EARTH DAY**

Sunday, April 21

Events happening from 2 - 5 pm

- Visit ecology related vendors
- Enjoy activities for kids
- Live entertainment
- Watch the family puzzle competition

Registration required for:

- Purchase parking lot stalls to have a sale
- Compete in family puzzle challenge

see page 30 for info on the garage-style parking lot sale



## ADOPT A PARK



Parks are a critical component of Shoreview's great quality of life. Volunteer today and get involved in your community to help keep our parks clean and safe.

- Volunteers are asked to pick up litter and report any concerns noticed at the park
- Park adoption period runs May - October and is a 2-year commitment

To learn more and apply:

- [shoreviewmn.gov/parks](http://shoreviewmn.gov/parks)
- 651-490-4750
- open to Shoreview residents only



# Special Events

## BAMBOO BAY EGG HUNT

The bunny will be hiding eggs for you to find in the Bamboo Bay pool area! Each child will be given an easter bag of goodies. After the egg hunt is completed participants will be able to swim in Bamboo Bay. Don't forget your swimsuit! No walk-ins accepted.

**Location:** community center — pool

**Registration deadline:** March 10

AGES	DATE & TIME	COST
7 & under	Sun, March 17 9 – 11 am	Adult: \$8 Child: \$12

## SHOREVIEW EGG HUNT

Join the bunny for an egg hunt! Each participant will be given a bag for hunting! The egg hunt will be held outside, so please dress for the weather. Tickets must be purchased for each individual participating in the egg hunt. No-walk ins.

**Location:** McCullough Park

**Registration deadline:** March 19

**Check in:** 10 am

AGES	DATE & TIME	COST
10 & under	Sat, March 23 10:30 am	\$12 per person

## SPRING COOKIE DECORATING

Come join us for spring cookie decorating. Each child will get one dozen cookies and be provided all the decorating supplies. Please bring a container to transport cookies home! Children must be accompanied by an adult.

**Location:** community center

**Registration deadline:** April 11

AGES	DATE & TIME	COST
12 & under	Thurs, April 18 6 – 7 pm	\$25

## SPRING ROYAL TEA PARTY

Join us at the Spring Royal Tea Party! Your afternoon will consist of crafts, a special appearance by a princess, storytelling, and refreshments. Come in your favorite princess look and don't forget your camera! Children must be accompanied by an adult.

Tickets must be purchased by each individual attending.

Pre-registration required. No walk-ins accepted.

**Location:** community center

**Registration deadline:** May 13

AGES	DATE & TIME	COST
10 & under	Sun, May 19 3 – 4:30 pm	\$15 per person

## WATER SAFETY CAMP

**SATURDAY, MAY 4 | 9 AM – NOON**

**COMMUNITY CENTER – NO REGISTRATION REQUIRED**

The City of Shoreview has partnered with Abby's Hope and Ramsey County Sheriff's department to host a water safety camp to provide education on water safety. This event is a one-day educational water safety camp where children and adults will learn:

- water safety
- proper life jacket fitting
- water rescue tips
- parent water tips
- boating regulations
- beach/pool safety
- tour rescue vehicles and more!



We will be providing free life jackets to attendees while supplies last





## MUSIC TOGETHER

Sing, dance, play, and learn with award-winning music and movement classes for infants, toddlers, preschoolers, and the adults who love them. The rich music environment in class will help your child grow into a confident, lifelong music maker.

Infants under eight months on the first day of the fall session (born after August 1, 2023) attend at no cost with a paid sibling.

Try a free demo class to see if this program is a good fit for your family.

### FREE DEMO CLASSES

**Location:** community center

**Registration deadline:** March 18

AGES	DATE & TIME	COST
0 – 5	Sun, March 24 4:30 – 5 pm	Free
0 – 5	Wed, March 27 9:15 – 10 am	Free

## MUSIC TOGETHER

**Location:** community center

**Registration deadline:** March 26

AGES	DATE & TIME	COST
0 – 5	Tues, April 2 – June 4 9:30 – 10:15 am	\$195; \$109 additional sibling
0 – 5	Tues, April 2 – June 4 10:30 – 11:15 am	\$195; \$109 additional sibling
0 – 5	Wed, April 3 – June 5 9:15 – 10 am	\$195; \$109 additional sibling
0 – 5	Wed, April 3 – June 5 10:15 – 11 am	\$195; \$109 additional sibling
0 – 5	Sun, April 7 – June 9 4:30 – 5:15 pm	\$195; \$109 additional sibling
0 – 5	Sun, April 7 – June 9 5:30 – 6:15 pm	\$195; \$109 additional sibling

## RHYTHM KIDS

Students will learn to compose, choreograph, and conduct as they play - and play with - a variety of musical instruments: West African drums, percussion instruments, along with their own voices and bodies. While they are having fun, they'll be refining focus, dexterity, coordination, and rhythm - all things they'll use every day for the rest of their lives.

Parents or caregivers are invited to participate along with their child in class but their attendance is not required.

### FREE DEMO CLASS

**Location:** community center

**Registration deadline:** March 18

AGES	DATE	COST
5 – 8	Sun, March 24 3:30 – 4:15 pm	Free

**Location:** community center

**Registration deadline:** April 1

AGES	DATE	COST
5 – 8	Sun, April 7 – June 9 3:30 – 4:15 pm	\$195; \$109 additional sibling





## WISH UPON A BALLET

Wish Upon a Ballet is a dance program for children that incorporates popular children's stories as well as ballet stories to create a dance class that is more than ballet steps. Come join the fun! Students will need ballet shoes and comfortable clothes they can move around in.

**Location:** community center

**Registration deadline:** March 11

AGES	DATE & TIME	COST
3 – 6	Sun, March 17 – May 19 2 – 2:45 pm	\$117; \$100 SV Res

*no class March 31 or May 12*

## WISH UPON A BALLET & TAP

This program offers the same curriculum as our Wish Upon a Ballet program with the added fun of tap dancing! An introduction to the movements and vocabulary of these disciplines are taught with the help of musical instruments, parachutes and scarves. Students will develop poise, strength and flexibility. Ballet and tap shoes are required.

**Location:** community center

**Registration deadline:** March 11

AGES	DATE & TIME	COST
4 – 7	Sun, March 17 – May 19 2:45 – 3:30 pm	\$117; \$100 SV Res

*no class March 31 or May 12*

## HIP HOP DANCE PARTY

Our Dance Classes will be sure to keep students active. Learn upbeat styles such as jazz and hip hop and move to your favorite songs. The students will also learn warm-ups such as stretching, isolations and across the floor exercises!

**Location:** community center

**Registration deadline:** March 11

AGES	DATE & TIME	COST
5 - 9	Sun, March 17 – May 19 3:30 – 4:15 pm	\$117; \$100 SV Res

*no class March 31 or May 12*



## INTRODUCTORY DRAWING WITH KIDSCREATE STUDIO

Calling all doodlers! Are you ready to take your drawings to the next level? We've got the perfect class for you! In this advanced class designed specifically for older artists, we'll learn and master a simple step-by-step method to truly fantastic drawings. From cute koalas to radiant sunsets to a lighthouse that really glow-in-the-dark, we'll hone our drawing skills as we create unique masterpieces any burgeoning artist would be proud of!

**Location:** community center  
**Registration deadline:** March 29

AGES	DATE & TIME	COST
5 – 12	Sat, April 6 – 27 9:30 – 10:30 am	\$92; \$82 SV Res

## KEEPSAKE GARDEN WITH KIDSCREATE

Come paint a cheerful flower garden, complete with the cutest little flowers you've ever seen! In this class, artists will paint a very special flower garden that features their own little handprints. Since your little one will only be little for so long, make the memory today, then treasure the keepsake for years to come! Come create right along with your child; children must be accompanied by a caregiver..

**Location:** community center  
**Registration deadline:** May 3

AGES	DATE & TIME	COST
18 mth – 6 yrs	Sat, May 11 9:30 – 10:30 am	\$37; \$27 SV Res

## HOT WHEELS WITH KIDSCREATE

Zooooom! This project will really move you. We will create a painting inspired by one of your child's favorite toys- Hot Wheels®! Come and create right along with your child. Children must be accompanied by a caregiver.

**Location:** community center  
**Registration deadline:** May 10

AGES	DATE & TIME	COST
18 mth – 6 yrs	Sat, May 18 9:30 – 10:30 am	\$35; \$25 SV Res



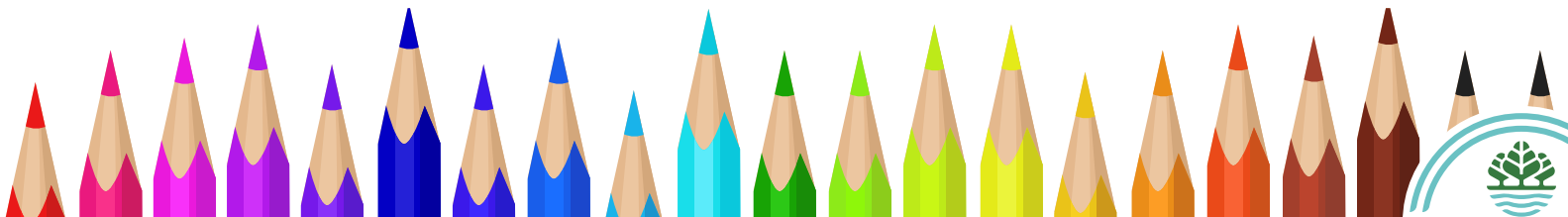
## PAINT WITH ME!

Grab your favorite adult for a fun morning of painting with Paint by Jill. A young person along with their grandparent, parent or another adult will create a painting together on one canvas. Children of all ages are welcome but five and older is recommended. One registration covers the cost of one child and their adult.

*See page 29 for adult painting programs.*

**Location:** community center  
**Registration deadline:** five days before class starts

AGES	DATE & TIME	CLASS	COST
Child 5+ Adult 18+	Sat, March 9 10 am – noon	Easter Me	\$39; \$36 SV Res
	Sat, April 13 10 am – noon	Wagon of Fun	\$39; \$36 SV Res



# Youth Programs



## BABYSITTING 101

This class will cover:

- First Aid
- Sitter Safety
- Crafts, toys & childproofing
- Nutrition

**Location:** community center

**Registration deadline:** four days before class

AGES	DATE & TIME	COST
10 – 13	Sat, April 13 8 am – noon	\$73; \$67 SV Res
10 – 13	Sat, May 11 8 am – noon	\$73; \$67 SV Res

## BABYSITTING FIRST AID

Students interested in continuing their babysitting skills will learn about:

- Recognizing an emergency
- When to call for help
- Care for injuries and allergic reactions
- How to help a choking child/infant
- Students will also put together a small first aid kit

**Location:** community center

**Registration deadline:** four days before class

AGES	DATE & TIME	COST
10 – 13	Sat, April 20 8 – 11 am	\$50



## ELEMENTARY SPANISH

Come learn Spanish with Language Sprout. This elementary-focused, immersive program will get your child speaking fast. Our classes combine theme based and grammar lessons with hands-on learning to meet your child at their right level.

Class includes a parent portal for continued learning at home.

**Location:** community center

**Registration deadline:** March 11

AGES	DATE & TIME	COST
6 – 12	Saturdays, March 16 – May 18 9:30 – 10:15 am	\$224; \$214 SV Res

## YOUNG LEARNERS SPANISH

Come sing, dance and play as we learn Spanish! Our young learners program blends real world play with language immersion to have your child on a fast track to bilingualism. Join us as we learn colors, shapes, numbers, feelings, pets, vegetables and more in this uniquely fun language program.

*A parent/guardian must attend class with child.*

**Location:** community center

**Registration deadline:** March 11

AGES	DATE & TIME	COST
2 – 5	Saturdays, March 16 – May 18 10:30 – 11:15 am	\$224; \$214 SV Res

## CHESS SCHOOL

Chess Teaches:

- math concepts
- how to strategize
- spatial and critical thinking
- focused concentration
- memory building skills

Open to all level of players. The professional coaches divide the room by abilities. Beginners learn basic game rules and opening tactic moves. Intermediate and advanced players learn sophisticated combinations and strategies and advanced opening moves. Best of all - Chess is fun!

**Location:** community center

**Registration deadline:** March 29

AGES	DATE & TIME	COST
5 – 15	Sat, April 6 – May 11 10 – 11:15 am	\$109; \$99 SV Res



Lil Ninjas and Tae Kwon Do classes are taught by Master Pam Meyers of Sun Yi's Academy of Traditional Tae Kwon Do. Questions about her program? Send Pam an email at [pmeyerstk@gmail.com](mailto:pmeyerstk@gmail.com)

## LIL NINJAS

Lil' Ninjas is specifically designed to enhance your child's development in a fun and motivating way. Class focuses on improving basic listening, social, and motor skills. Our instructors work on focus, team work, control, balance, memory, discipline, fitness, coordination, and respect.

Class is limited to 8 students. Sun Yi Academy uniforms are required. Uniforms can be purchased for an additional fee (cash or check) with the instructor the first night of class.

**Location:** community center—Studio 3

**Registration deadline:** April 2

AGE	RANK	DATE & TIME	COST
4 – 6	High	Wed, April 3 – May 22 5:15 – 5:45 pm	\$80; \$72 SV Res
4 – 6	Low	Wed, April 3 – May 22 5:45 – 6:15 pm	\$80; \$72 SV Res
4 - 6	Low	Thurs, April 4 – May 23 5:15 – 5:45 pm	\$80; \$72 SV Res
4 – 6	High	Thurs, April 4 – May 23 5:45 – 6:15 pm	\$80; \$72 SV Res

## INTRODUCTION TO TAE KWON DO

This class is for students new to Sun Yi's Academy of Tae Kwon Do. Students will learn the fundamental skills of Tae Kwon Do. No uniform is needed for this class. Wear comfortable clothing.

**Location:** community center — Studio 3

**Registration deadline:** April 2

AGE	DATE & TIME	COST
7+	Tues, April 2 – May 21 5:30 – 6:15 pm	\$80, \$72 SV Res

## TAE KWON DO

New students must take Introduction to Tae Kwon Do before taking a ranked class.

Tae Kwon Do is unlike other martial arts programs, incorporating physical and mental elements into each class. Classes teach kicking, punching, striking, and blocking techniques through traditional Tae Kwon Do. Students will improve stamina, strength, speed, agility, coordination, balance, reflexes, concentration and confidence.

If your child has taken Tae Kwon Do at another location, please email Pam at [pmeyerstk@gmail.com](mailto:pmeyerstk@gmail.com) to verify their rank before you sign them up for class.

BELT	RANK
White through Green	Low
Blue and above	High

**Location:** community center — Studio 3

**Registration deadline:** April 6

**Pre-requisite:** Introduction to Tae Kwon Do

AGE	RANK	DATE & TIME	COST
7+	Low	Tues & Thurs April 2 – May 23 6:15 – 7:15 pm	\$160; \$144 SV Res
7+	High	Tues & Thurs April 2 – May 23 7:15 – 8:15 pm	\$160; \$144 SV Res





## TUMBLING

Discover the sport of tumbling in a positive, educational atmosphere. Participants will learn basic skills on floor, balance beam, bars, and vault. Due to space limitations there is no observation area for parents; parents are invited to observe the final class.

**Location:** community center

**Registration deadline:** March 15

AGE	CLASS	DATE & TIME	COST
2 - 3	Parent & Toddler*	Sat, March 23 - April 27 9:45-10:30 am	\$103; \$93 SV Res
2 - 3	Parent & Toddler*	Sat, March 23 - April 27 10:45-11:30 am	\$103; \$93 SV Res
3 - 5	Beginner	Sat, March 23 - April 27 11:45 am - 12:30 pm	\$103; \$93 SV Res
5 - 7	Intermediate	Sat, March 23 - April 27 12:45-1:30 pm	\$103; \$93 SV Res

*\*Parent participation and support are required as part of this class.  
Please only send one adult with one child.*

## MINI KICKERS SOCCER

This program teaches fundamental skills of soccer. Small group sizes provide a fun and active environment. Age appropriate equipment is used.

**Location:** community center

**Registration deadline:** March 15

AGE	DATE & TIME	COST
3 - 5	Sat, March 23 - April 27 9 - 9:30 am	\$85; \$78 SV Res
3 - 5	Sat, March 23 - April 27 9:35 - 10:05 am	\$85; \$78 SV Res
3 - 5	Sat, March 23 - April 27 10:10 - 10:40 am	\$85; \$78 SV Res

## AFTER SCHOOL SPORTS

Instructors provide the opportunity for participants to try new gym games and sports every other week! Sports include basketball, soccer, kickball, and more.

**Location:** Island Lake Elementary - gym

**Registration deadline:** March 14

**No class:** April 11

GRADES	DATE & TIME	COST
1 - 5	Thurs, March 21 - May 16 4:05 - 5:05 pm	\$96



## GIRLS VOLLEYBALL SKILLS

Participants will develop skills and learn the rules of volleyball in a team setting.

**Location:** Mounds View Community Center

**Registration deadline:** March 19

GRADES	DATE & TIME	COST
4 – 5	Tues, March 26 - April 30 6 - 7 pm	\$65
6 – 8	Tues, March 26 - April 30 7 – 8 pm	\$65

## REVSports BASKETBALL

Come and enjoy the fun filled camps that RevSports has to offer! Each camp will provide instruction, games, and fun! All equipment is provided.

**Location:** community center

**Registration deadline:** April 1

AGE	DATE & TIME	COST
3 – 4	Mon, April 8 - 29 5 - 5:25 pm	\$84; \$77 SV Res
4 – 6	Mon, April 8 - 29 5:30 – 6:10 pm	\$84; \$77 SV Res
4 – 6	Mon, April 8 - 29 6:15 – 6:55 pm	\$84; \$77 SV Res
6 – 8	Mon, April 8 – 29 7 – 7:40 pm	\$84; \$77 SV Res

## TGA GOLF

TGA (Teach. Grow. Achieve) brings the golf course to your student, making it convenient and affordable to learn and play golf in a fun and safe environment. Kid-friendly instructors help students develop golf skills and knowledge, while using the sport to teach valuable life lessons like honesty and sportsmanship. Best of all, top-notch equipment and training materials are provided, so students of all skill levels have the chance to come out and play with TGA!

**Location:** Island Lake Elementary – gym

**Registration deadline:** March 11

GRADE	DATE & TIME	COST
1 – 5	Mon, March 18 – April 22 4:05 – 5:05 pm	\$165

## TGA PICKLEBALL

TGA pickleball camps provide kids of all ages and abilities the opportunity to play and develop their love of the game. The dedicated coaching staff and low camper-to-coach ratio allow for individual attention and instruction tailored to each participant's skill level.

**Location:** Island Lake Elementary – gym

**Registration deadline:** April 17

GRADE	DATE & TIME	COST
1 – 5	Wed, April 24 – May 29 4:05 – 5:05 pm	\$165



## PRIVATE & SEMI PRIVATE TENNIS LESSONS

Personalized high-quality tennis instruction for players who want to improve their court game. Our instructors will help you work on your groundstrokes, serves, volleys, lobs, and smashes in an individual setting. This program offers one-on-one tennis instruction for the casual or avid tennis player.

Semi-private lessons are for two participants of equivalent ability. Participants must enroll with a partner for semi-private lessons. Each participant pays a registration fee.

CLASS	TIME	COST
Individual private	5 lessons 60 minutes	\$200; \$190 SV Res
Semi-private	5 lessons 60 minutes	\$118; \$108 SV Res

## GROUP TENNIS LESSONS

### PEE WEES | AGES 5 TO 7

Includes lessons on the basics of tennis. Low compression tennis balls provided. Participants should bring a junior sized racquet.

### BEGINNERS | AGES 7 TO 11

For players with little or no tennis experience. Instruction focuses on grip, rules, and fundamental strokes.

### ADVANCED BEGINNERS | AGES 9 TO 11

Perfect for the player who has taken lessons, but needs stroke and technique improvement. Instruction focuses on stroke consistency and introduces new strokes.

**Location:** Wilson Park

**Registration deadline:** April 12

CLASS	DATE & TIME	COST
Pee Wees	Sat, April 20 - May 18 10 - 10:45 am	\$79; \$69 SV Res
Beginners	Sat, April 20 - May 18 11 - 11:45 am	\$79; \$69 SV Res
Advanced Beginners	Sat, April 20 - May 18 noon - 12:55 pm	\$79; \$69 SV Res







## SUMMER CO-REC SOCCER LEAGUES

Our leagues are held in collaboration with Arden Hills, Mounds View, New Brighton, and Fridley. Practice and game times will be determined after teams are formed. Volunteer coaches will contact participants with team and schedule information 1-2 weeks before league starts.

- Learn the basic skills and fundamentals of soccer
- All players must wear shin guards but cleats are not required
- Players will receive a t-shirt

GRADE (2024 – 2025 SCHOOL YEAR)	AGE	DATE	COST
PreK/ Kindergarten	5 – 6	Tues, May 28 – July 23	\$68
1 – 2	6 – 8	Mon & Wed, May 29 – July 31	\$78
3 – 4	8 – 10	Tues & Thurs, May 30 – July 30	\$78
5 – 6	10 – 12	Mon & Wed, May 29 – July 31	\$78

## SUMMER CO-REC T-BALL & BASEBALL LEAGUES

Our leagues are held in collaboration with Arden Hills, Mounds View, New Brighton, and Fridley. Practice and game times will be determined after teams are formed. Volunteer coaches will contact participants with team and schedule information one to two weeks before league starts.

- Learn basic skills as well as teamwork and good sportsmanship
- Games are umpired by coaches
- Players will receive a t-shirt and hat

Grades 1 – 4 will use both a pitching machine and coach pitch

**Registration deadline:** April 19 (\$20 late fee after deadline)

GRADE (2024 – 2025 SCHOOL YEAR)	AGE	DATE	COST
Preschool T-ball	3 – 4.5	Wed, May 29 – July 31	\$68
Kindergarten T-ball	4.5 – 6	Mon, June 3 – July 29	\$68
1 – 2 Baseball	6 – 8	Tues & Thurs, May 30 – July 30	\$78
3 – 4 Baseball	8 – 10	Mon & Wed, May 29 – July 31	\$78



### VOLUNTEERS COACHES NEEDED!

**Soccer coaches meeting:** May 14 at 6:00 pm

**T-Ball/Baseball coaches meeting:** May 15 at 6:00 pm

Coaches meetings will be held at the community center. Practices and games held in various parks in Shoreview or neighboring cities.

### Benefits of volunteer coaching:

- Give back to the community
- Provide youth with fun experience
- 50% refund of registration fee

### Important information:

Coach will contact participants one week prior to start. Detailed schedule given out at first practice. Teammate requests can be made at registration.

Please contact parks & rec at 651-490-4750 with questions.





# JOIN OUR TEAM

**Part-time, flexible hours,  
free community center membership**

### ADVENTURE QUEST PLAYGROUND INSTRUCTOR - CAMP COUNSELOR

\$13.50-17.50/hour June - August

Lead kids ages 3-11 in summer playground events, sports, crafts, songs, art and special events.

### CHILD CARE ATTENDANT

\$12.50-16/hour

Provide care for children 6 months to 8 years in our drop-off center. Exp. with preschoolers preferred.

### GROUP FITNESS INSTRUCTOR

\$20-27/hour

Seeking certified instructors to teach cardio and strength classes.

### GYMNASTICS/TUMBLING INSTRUCTOR

\$13-16/hour

Teach beginning to intermediate level gymnastics to kids ages 3 through 8. No experience required.

### LIFEGUARD

\$14-16/hour  
(Up to \$20/hr for certain shifts)

No experience required. Training is provided through Ellis Certification. Must be at least 15 years old.

### MANAGER ON DUTY

\$19-25/hour

Coordinate daily activities, supervise staff, assist guests, follow safety/security procedures.

### PERSONAL TRAINER

\$20-27/hour

Nationally-certified trainers provide personalized workouts for general fitness & sport-specific conditioning.

### POOL COORDINATOR

\$17.50-22/hour

Coordinate activities/operations, supervise/train staff, schedule shifts, carry out policies, maintain systems.

### SEASONAL MAINTENANCE WORKER

\$15-19.50/hour

Parks, streets and utilities teams are hiring full-time summer help to perform general labor.

### SERVICE DESK

\$13-17/hour

Help guests on the phone and in-person, operate cash register, log membership information, assist cafe staff.

### SPECIAL EVENTS STAFF

\$12.50-16/hour

Help host our Egg Hunt, Kids Garage Sale, Halloween Hoopla, etc. Duties include decorating & clean up.

### SPORTS COORDINATOR

\$17-22/hour

Develop, implement and coordinate the soccer and ice skating recreation programs. Respond to inquiries and provide excellent customer service.

### SPORTS INSTRUCTOR

\$14-18/hour

Lead youth and adults in a variety of sports activities. Sports background required.

### SUMMER DISCOVERY CAMP COORDINATOR

\$19-24/hour May - August

Oversee summer childcare program. Develop programs, supervise staff and communicate with parents.

### SUMMER DISCOVERY INSTRUCTOR - CAMP COUNSELOR

\$14-18.50/hour June - August

Supervise kids in grades K-6 in our child care program this summer. Plan arts and crafts, sports, field trips and more.

### SWIMMING INSTRUCTOR - WE WILL TRAIN

\$15-17/hour

No experience required, training provided. Morning/early evening classes held at the community center.

### TENNIS INSTRUCTOR

\$14.50-18/hour April - August

Instruct youth and adults in basic to advanced level classes. Past teaching and playing experience desired.

### WATERSLIDE ATTENDANT

\$12-14/hour  
(up to \$20/hr for certain shifts)

Control access to waterslide entrance, supervise guests, and ensure guest safety.

### WAVE CAFE ATTENDANT

\$12-15.50/hour

Prepare food, operate cash register, maintain a clean work area and lobby/tables, stock supplies.

**Open until filled!**

**Find current job listings  
online at**

**[shoreviewmn.gov/jobs](http://shoreviewmn.gov/jobs)**





		Acres	Ballfields	Basketball Court	Football	Skating Rink	Paths	Pickleball	Tennis	Picnic Area	Playground	Shelter	Soccer	Circuit Training
Bobby Theisen Park	3575 Vivian Avenue	15		1	√	√	√	6	2			1	√	
Bucher Park	5900 Mackubin Street	25	2	1	√	√	√		2	√	√	1	√	√
Heritage Park	1170 Lepak Court	3												
Lake Judy Park	900 Tiller Lane	5		½			√			√	√			
McCullough Park	955 County Rd I	75	2	1	√	√	√		2	√	√	1	√	
Ponds Park	190 Sherwood Road	1					√			√	√			
Rice Creek Fields	5880 Rice Creek Pkwy	10	4				√			√	√			
Shamrock Park	5623 Snelling Avenue	23	2	1	√	√	√		2	√	√	1	√	
Shoreview Commons	4580 North Victoria	40		1	√	√	√	2	2	√	√	1	√	
Sitzer Park	4344 Hodgson Road	8	2	1		√	√		2	√	√	1		
Wilson Park	815 County Road F	13	2	1		√	√			√	√			

The following are operated by Ramsey County Parks & Recreation.

651-266-0300

[ramseycounty.us/parks](http://ramseycounty.us/parks)

		Acres	Boat Ramp	X-Country Skiing	Fishing	Hiking Trails	Hockey Rink	Golf Course	Paths	Picnic Area	Playground	Shelter	Swimming
Island Lake Cty Park	3611 Victoria Street	167	√		√			√	√	√	√	√	
Lake Owasso Cty Park	370 N. Owasso Blvd.	9	√		√				√	√	√	√	√
Shoreview Ice Arena	877 Highway 96						√						
Snail Lake Regional Park	580 Lake Blvd.	400	√	√	√	√			√	√	√	√	√
Turtle Lake Cty Park	4979 Hodgson Road	9	√		√					√	√	√	√

For indoor pickleball and swimming visit the Shoreview Community Center.





Presorted Standard  
U.S. POSTAGE  
PAID  
TWIN CITIES, MN  
PERMIT NO. 5606

City of Shoreview  
4600 Victoria Street North  
Shoreview MN 55126

# WE'RE HIRING!



## APPLY ONLINE

[SHOREVIEWMN.GOV/JOBS](https://shoreviewmn.gov/jobs)

## SPRING & SUMMER JOBS!

