

SHOREVIEWS



WINTER 2024

City News and Recreation Catalog

City news	4
Resident resources	8
Community center	14
Recreation programs	21



In this Issue

City news	4
Resident resources	6
Registration information	13
Community center	14
Event rentals	17
Group fitness	21
Adult sports	24
Adult programs	25
Aquatics	31
Kids Corner Preschool	38
Youth programs	43
Youth sports	48
Jobs	54
Recreation areas	55

Events at a Glance



INDOOR FARMERS MARKET

Saturday, December 16
9 am – noon
Community center

Local Fresh Produce • Handcrafted Artisan Items

see page 40 for details

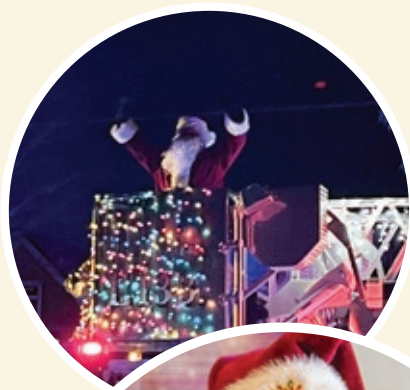
Dive-in Movie

Friday, February 2
7 pm, community center

Tickets must be purchased by each person attending. Pre-registration required. No walk-ins accepted.

see page 42 for details





Santa Cruise December 4



Santa's Workshop December 16 Community center



Kids' Secret Holiday Shopping Spree December 16 Community center

see page 41 for details

New Year's Eve Party

Sunday, December 31, 5 – 8 pm

see page 40 for details

Sweetheart Dance

Friday, February 9, 6 – 7:30 pm
Community center

see page 42 for details

Contact Us

City Hall	651-490-4600
Community Center	651-490-4700
Parks and Recreation	651-490-4750
Building Permits	651-490-4683
Code Enforcement	651-490-4669
Forestry	651-490-4665
Human Resources	651-490-4619
Planning and Zoning	651-490-4680
Recycling	651-490-4650
Sewer & Water	651-490-4661
Streets	651-490-4671
Utility Billing	651-490-4630

POLICE & ANIMAL CONTROL

Police protection and animal control are provided by Ramsey County Sheriff's Office.

For non-emergencies	651-767-0640
For emergencies	911

FIRE

Fire protection is provided by the Lake Johanna Fire Department.

For emergencies	911 Dispatch
Non-emergency	651-415-2100

CITY OFFICIALS

Sue Denkinger, mayor
651-490-4618 | sdenkinger@shoreviewmn.gov

John Doan, council member
612-424-2527 | jdoan@shoreviewmn.gov

Emy Johnson, council member
763-443-5218 | ejohnson@shoreviewmn.gov

Shelly Myrland, council member
763-291-0185 | smyrland@shoreviewmn.gov

Cory Springhorn, council member
651-403-3422 | cspringhorn@shoreviewmn.gov

Brad Martens, city manager
651-490-4611 | bmartens@shoreviewmn.gov



2024 Budget Hearing

Monday,
December 4
at 7 pm

2024 BUDGET MAINTAINS ESSENTIAL SERVICES

At its September 18, 2023 meeting, the city council adopted a preliminary 2024 tax levy of \$16,434,267. This is a 7.12% increase above the 2023 tax levy.

The preliminary tax levy and corresponding capital budget are designed to maintain essential services and programs including:

- Public safety (Ramsey County Sheriff and Lake Johanna Fire Department)
- Existing services, programs, and infrastructure
- Park maintenance and improvements
- Building inspections
- Community and economic development
- Community center operations and recreation programs

The levy increase is primarily due to increases in contracts for fire and police in order to continue to provide high-quality public safety services. Additionally, there are minor increases in the economic development authority, housing and redevelopment authority, and capital asset replacement levies.

Garbage collection survey— we want to hear from you!

Most cities have one of two systems for garbage collection, an open or organized system. Open systems allow licensed haulers to serve anywhere in the city and residents to select their own hauler. Organized systems allow a city to enter into a contract with selected haulers. The city currently has an open system for garbage collection and organized system for recycling collection.

Since 2010, the city has been asking residents their preferences between open and organized systems in its community survey. Until the 2022 survey, the majority of residents opposed the city moving to an organized system. In 2022, this switched with the majority saying they would support a move.

Before moving forward with anything, the city wants to hear from you. Learn more about each system and take a brief online survey at: polco.us/shoreviewmn.

Thank
you

Shoreview
Volunteers!

- Bikeways and trails committee
- Economic development authority
- Economic development commission
- Environmental quality committee
- Gallery 96 Art Center
- Human rights commission
- Parks and recreation commission
- Planning commission
- Public safety committee
- Shoreview Community Foundation
- Shoreview-Einhausen Sister City Association
- Shoreview Historical Society
- Shoreview Northern Lights Variety band
- Slice of Shoreview Coordinating Committee
- Snail Lake Improvement District Board



Thank You Adopt a Trail Members



Shoreview Down Payment Assistance Program for New Home Buyers

New home buyers in Shoreview can qualify for up to \$30,000 in down payment assistance. Low interest loans are available for homes under \$425,000.

Amortizing: For buyers with incomes below 120% of the Area Median Income, you can get up to \$30,000, with low interest, paid back in monthly payments.

Due on Sale: For buyers whose incomes are at or below 80% of the Area Median Income, up to \$20,000 is available in a due-on-sale loan with 0% interest and no payments, paid back when the home is sold, transferred, or no longer owner-occupied. Additional funds, up to a combined total of \$30,000 may be used.

- Applies to single-family homes, townhomes, duplexes, and condominiums within Shoreview city limits.
- Property must be owner-occupied as a primary residence.
- Purchase price may not exceed \$425,000.
- Buyers must attend homebuyer education.
- Buyer may not have owned a home within 3 years.
- \$25 application fee
- There must be a minimum contribution of 3% of the purchase price paid by or on behalf of the borrower.

Interested in finding out more information? Contact our partner NeighborWorks Home Partners — 651-292-8719 or via email at downpayment@nwhomepartners.org.

ADOPTER	NAME ON SIGN
Jenna K Sager	Progressive Insurance
Abraham & Sarah Wolfe	Abraham & Sarah Wolfe & Family
Kelli Damlo	Kelli Damlo
Liza Hall	The Anderson Family in Memory of Taylor Anderson
Bob Johnson	Shoreview Bikeways and Trails Committee
Jane Childers	Jane-Kris-Sandi
Rich Haavisto	Rich, Tina, and Kas Haavisto, and Michelle, Calvin, Elliot, and Evelyn Jordan
Craig Aasen	Troop 639
Brooke Gray	Loden SV & Emrik
Charlie & Marcy Rediske	The Rediske Family
Sara Larson	Sara Larson and Kent Roper
Brent Swisher	Swisher Family and Friends
Marco & Lindsey Esnaola	Marco & Lindsey Esnaola
Heather Walch	The Walch Family
Barb Kaner	Gradient Financial Group
Gene Holen	F and H
Rachelle K Foster	Oak Hill Montessori
Sara Barsness	Golda and Lutsen's Family





Winter weather tips for homeowners

READY TO SHOVEL?

- Shovel snow onto your lawn, not into the street
- Shovel around the nearest fire hydrant and storm sewer
- Place garbage and recycling carts on the end of the driveway or yard, not in the street
- Plows work overnight and during the day - don't park on the street until it's been cleared
- Street parking is not permitted from 2 – 5 am

REDUCE SALT USE

- Keep walkways and driveways safe while using salt effectively!
- Did you know? Salt pollutes water and can harm plants, animals, soil, and drinking water. Just a teaspoon of road salt can pollute up to five gallons of water. Only apply salt when needed.
- **Shovel first**
 - The more snow that is cleared first, the less salt is needed
- **Choose the right product**
 - Salt doesn't melt ice if the pavement is below 15 degrees
- **Spread salt across pavement**
 - More salt doesn't melt more
 - A 12 ounce coffee cup of salt is enough to cover 10 sidewalk squares or a 20-foot driveway
- **Clean up**
 - Salt on dry pavement is not doing its job and can be swept up to use again

Rental licenses

All rental licenses in Shoreview expire on December 31.

Applications for a new license must be submitted before January 1. Licenses can be renewed if the property is up to code, the utility bill is current, and no conduct issues are not present. It should be noted that rental license fees have been updated by the city council.

NEW FEES:

- \$150 application fee, additional \$250 after due date
- \$50 1st reinspection fee, 2nd and additional reinspection: \$100
- Investigation per unit for unlicensed operation: \$300
- Multi-family: \$200 per building and \$10 per unit - no discounts.

Renew online or in person. Contact 651-490-4680 if you have any questions.





Green Community Awards

This year's Green Community Award winners all decided that doing something good wasn't enough. They wanted to inspire others to do something good too.



SANDRA SWAMI | CHURCHILL ST.

Sandra's love of gardens began with her parents who created spaces for people and nature to coexist. After moving to Minnesota from California she has been replacing the turf grass in the front yard with native perennials. In full bloom the colors pop and the pollinators visit. She has also added a rain garden and a pervious paver driveway. Next will be the backyard because as gardeners know, you're never really finished.



HEATHER WALCH | REILAND LN.

Flood waters on Snail Lake had many homeowners rethinking their relationship with the water. Heather decided to install a shoreline buffer to naturally filter rainwater that flowed down the slope of her yard. The buffer is filled with native pollinator plants. The Ramsey Washington Watershed District was so impressed by Heather's project that they helped pay for some of the plants.



CHURCHILL STREET RESTAURANT | CHURCHILL ST.

It's not on the menu, but sustainability is baked into the operations of Churchill Street restaurant. Carly Gatzlaff's staff uses locally sourced meats and vegetables. Some of which are grown in the planters surrounding the patio. The service ware is reusable, and all food scraps are collected for composting. In fact, their hauler collects recycling and organics twice a week, while garbage is collected only once. They also utilized Ramsey and Washington Counties' BizRecycling program that offers grants and free resources to businesses wanting to reduce waste.



This year's winners say you can make a difference too, and you don't have to do it alone. Ask neighbors and friends for advice and tap into resources such as grants to help pay for some of the expenses.



Sustainable Shoreview



EUREKA RECYCLING

Shoreview partners with Eureka Recycling, a local nonprofit recycler, to collect recycling from residents. Eureka is dedicated to preventing waste through demonstration, education, and advocacy. As a nonprofit recycler, it is one of only a handful of similar organizations in the country. Approximately 75% of sorted materials stay in Minnesota to be turned into the next product after being picked up from residents' carts!



CLEANUP DAY

Materials such as appliances, electronics, bikes, and metal are sorted for reuse or recycling day during Spring Cleanup Day. This year, almost 40 bikes were collected to be refurbished and donated to kids in need through Bikes4Kids.



EROSION CONTROL INSPECTIONS

Erosion control measures are required at construction sites to protect water quality. These practices prevent sediment or other material from leaving a site, entering a water body, and polluting it. The city and partners completed approximately three hundred inspections this year on construction sites to make sure the erosion control is working properly.

STREETLIGHT AND PARK LIGHT REPLACEMENTS

Almost 80 streetlight fixtures were replaced with LEDs in 2023, which use approximately three quarters less energy than previous streetlight models. Lights in Shamrock and Wilson parks were also switched to LED this year.

FREE ELECTRONICS RECYCLING

Ramsey County residents looking to get rid of computers, televisions, cell phones, and other electronics now have a free and easy way to recycle them. Ramsey County has partnered with Repowered to refurbish or recycle unwanted electronics, keeping toxic metals like lead, mercury, and cadmium out of the environment. All data from electronics dropped off at Repowered will be physically destroyed or electronically wiped.

Repowered, 860 Vandalia Street, St. Paul, 55114.





ORGANICS COLLECTION AT THE SLICE OF SHOREVIEW

The Shoreview Environmental Quality Committee and other volunteers collected food scraps and compostable items for organics recycling at the Slice of Shoreview. Over **700 pounds** were collected at the food court over the festival!



IRRIGATION CONTROLLER REBATES

Rebates for upgrading an irrigation system to use a smart irrigation controller continue to be offered to residents through a grant from the Met Council with funds from the Clean Water Land & Legacy fund. WaterSense labeled irrigation controllers can reduce overwatering and the amount of water wasted during irrigation. Smart irrigation controllers help to water plants only when it's needed according to weather conditions or soil moisture.

GREENSTEP CITY

Shoreview achieved Step 5 again in 2023 through the GreenStep Cities program. This challenge recognizes cities in their sustainability and quality of life goals. Step 5 is the highest step available and ongoing improvement is needed to maintain the status.



Minnesota
GreenStep

PARTNERS IN ENERGY

City staff and community members started the Partners in Energy program this fall. The program is designed to support the city in creating an energy action plan. It is a great opportunity to identify cost savings, support economic development, save energy, and help the environment.



PARTNERS IN ENERGY
An Xcel Energy Community Collaboration

PICK UP AFTER YOUR PET

Whether it's in your lawn, on the sidewalk, or at the park, pet waste carries harmful bacteria and phosphorus into the water supply. Pick up after your pet and put pet waste in the trash to make sure it doesn't reach the storm drain system and our local bodies of water.



Resident Resources

HOLIDAY RECYCLING

The holidays can be full of single-use items. When thinking of holiday gatherings and gifts, consider ways to reuse and cut down on waste. For items that you're throwing away, make sure you know where they go.



- **WRAPPING**

Wrapping paper - wrapping and tissue paper goes in the trash, not the recycling bin. Use and save gift bags, tissue paper, and bows to reuse more than once.



- **BATTERIES**

Toys and holiday cards with batteries often cannot be thrown in the trash. Lithium batteries and many rechargeable batteries can cause fires and need to be disposed of at a household hazardous waste location.



- **CARDBOARD**

Flatten boxes and put them in your recycling cart. If you have more cardboard than can fit in your cart, call Eureka for extra cardboard pickup or drop it off at Waste Management, 309 Como Ave, St. Paul.



- **TREE DISPOSAL**

Done with your evergreen tree? Bring your holiday/Christmas tree to a Ramsey County yard waste site or the Maintenance center. Remove all lights, wires, and ornaments. No wreaths or boughs accepted. Maintenance Center, 4615 Victoria St N, Monday-Friday, 7 am-3 pm



- **STRING LIGHTS**

Holiday lights are accepted at mobile household hazardous waste collection sites and at the year-round household hazardous waste facility (5 Empire Drive, St. Paul).



Download Eureka Recycling's app for a helpful tool to find out what is recyclable. Visit Ramsey County's A to Z Disposal Guide for additional disposal options.

RAMSEY COUNTY WINTER YARD WASTE HOURS

DECEMBER - MARCH

- Monday - Friday: closed
- Saturday: 9 am - 5 pm
- Sunday: 11 am - 5 pm

Closed on Christmas Day and New Year's Day

Arden Hills: 3530 Hudson Avenue

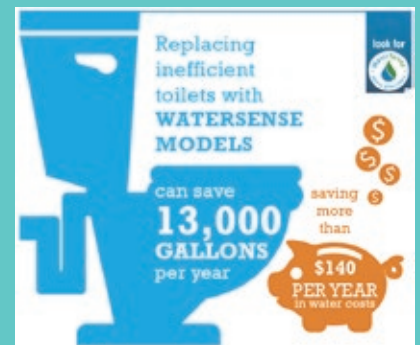
Mounds View: 8307 Long Lake Road

White Bear Township: 5900 Sherwood Road

SAVE MONEY AND WATER!

APPLY FOR A REBATE

The average household can save around 13,000 gallons of water per year and \$140 per year by replacing an old, inefficient toilet! Replace an old toilet with a WaterSense certified toilet and apply for a rebate. Rebates cover 75% of the cost, up to \$150, and come as a credit on a resident's utility bill.



Learn more at shoreviewmn.gov/services/watersmart



Resident Resources



DO YOU HAVE AN ASH TREE ON YOUR PROPERTY?

Now is the time to make a plan for removal of your ash tree if you have not been treating it. Property owners are being asked to remove untreated ash trees on private property by the end of 2025.

Ash trees are being infested by emerald ash borer (EAB), an invasive insect that attacks and kills ash trees native to Minnesota. Treating ash trees with an insecticide trunk injection is effective when it is started early as a preventative strategy. Many trees that have not already been treated are too heavily infested for treatment at this point in time.

Contact licensed tree companies for estimates on tree removal. The city does not have funding to assist with tree removals on private property.

TIPS FOR HIRING A TREE CARE COMPANY

- Check the list of licensed tree companies
- Get more than one estimate from licensed companies
- Don't pay for work in advance
- Ask about the company's certifications and experience
- Make sure you understand what work is included in the estimate

Questions? Visit shoreviewmn.gov/trees



MEETING BROADCAST SCHEDULE

Channel 16 broadcasts live city council and planning commission meetings every month.

Live Shoreview City Council Meetings

- First and third Monday every month at 7 pm

Live Shoreview Planning Commission Meetings

- Fourth Tuesday of the month at 7 pm

View the full schedule and replay information at shoreviewmn.gov. Council and planning commission meetings can be streamed live at shoreviewmn.gov/agendas.

Like

Follow

Share

@cityofshoreview

ACCESS SHOREVIEW

Sign up to receive our online newsletter that is sent after each meeting with news and events.

Visit bit.ly/AccessShoreview



Community Organizations



NYFS

Northeast Youth & Family Services has openings for mental health clients age 4 through adult. We are committed to providing affordable, trauma-aware and culturally-responsive mental health support to clients at all ages and stages of life via in-person or telehealth appointments. Art and play therapy options are also available. To reduce barriers to care, NYFS also offers a sliding-fee scale for services to clients who qualify.

Call us at 651-486-3808 to schedule an appointment or request one online at nyfs.org/request-appointment.

For more information about NYFS, please visit us on the web at nyfs.org.

RALPH REEDER FOOD SHELF

Ralph Reeder announces a \$100,000 Matching Challenge Grant to Help Feed our Food Insecure Neighbors

The Ralph Reeder Food Shelf needs your help today. Demand for food and other resources is at an all time high for our area and we are serving thousands of children, adults and seniors each and every month. Thanks to our generous partners at Bell Lumber and Pole we are able to stretch your dollars even further this holiday season and feed more of our hungry neighbors. All first time donations as well as any increased giving over your 2022 giving will be matched, dollar for dollar, by Bell Lumber and Pole up to a whopping \$100,000 - doubling your impact! To make a difference, please GIVE TODAY at givemn.org/organization/Ralph-Reeder-Food-Shelf

or send a check to the Ralph Reeder Food Shelf - 2544 Mounds View Blvd. Mounds View MN 55112 by Dec. 18th.

**THANK YOU
FOR JOINING
US IN THE
FIGHT AGAINST
HUNGER!**

Shoreview Historical Society

"Preserving Today's History for Tomorrow"

That is the the mission statement of the Shoreview Historical Society which has been documenting and sharing Shoreview History since its inception in 1991. The Society has published two books and a driving tour booklet. Over that time it has honored sixteen heritage families. Its permanent home is at the Lepak/Larson house and tours of the first floor museum are being planned.

*We invite you to become a member
as we go forward.*



Musical Yuletide

*The Shoreview
NORTHERN LIGHTS
VARIETY BAND*

**Saturday, December 09, 2023 at 7pm
Benson Great Hall, Bethel University**

Tickets are \$20 and available at:

- www.snlvb.com
- Shoreview City Hall
- [Tickets.bethel.edu](https://tickets.bethel.edu)
- Benson Great Hall Ticket Office
- At the Door

Special Guests:

 **MINNESOTA
SAINTS CHORALE**

*Dr. Michael Scott,
Music Director*



PARKS & RECREATION

Register for Winter programs in CivicRec!

Scan the QR code to create your account



Visit shoreviewmn.gov/parks-rec.

Click "register online"

Select Login/Create account on your desktop or mobile device

Create your SVMN account

Fill in all required information

Add additional household members and click "save"

If you are a Shoreview resident, enter your zip code and change your city to Shoreview

POLICIES

- Five days notice required for cancellations
- Cancellation fee \$5 – \$10 depending on the program
- No refunds for missed classes
- Scholarships available for Shoreview residents
- Restrictions apply

Registration Schedule

Registration begins at 8 am

WINTER REGISTRATION SCHEDULE

Tuesday, November 28: Shoreview residents

Thursday, November 30: Annual members

Friday, December 1: General registration

CONTACT US

Parks & Rec

Monday – Friday: 8 am – 4:30 pm

651-490-4750

recreation@shoreviewmn.gov



WEATHER UPDATES

For weather updates call 651-490-4765

Membership Rates & Benefits



MEMBERSHIP FEES

Annual Membership¹ (with one year membership agreement)

	FAMILY	DUAL	ADULT	YOUTH/SENIOR
Rate	\$971	\$825	\$572	\$464
Shoreview resident*	\$725	\$645	\$425	\$360
Military*	\$930	\$790	\$545	\$445
Military resident*	\$700	\$620	\$415	\$350

Annual Membership Billed Monthly¹ (with one year membership agreement)

	FAMILY	DUAL	ADULT	YOUTH/SENIOR
Rate	\$88	\$74.75	\$52.50	\$46.25
Shoreview Resident*	\$70	\$62	\$41.50	\$35
Military*	\$83.50	\$71	\$50	\$44.25
Military Resident*	\$67	\$59	\$40	\$33

¹ \$100 early cancellation fee. * Sales tax is included in price.

Seasonal Membership (Three months)

	FAMILY	DUAL	ADULT	YOUTH/SENIOR
Rate	\$362.25	\$343.25	\$242	\$187.50
Shoreview resident*	\$277	\$255	\$180	\$150

* ID required for military and resident rates.

Military rate not available for seasonal memberships

- Seniors: 65 & older
- Youth: 17 & younger
- Dual membership is two people living in the same household. Family two adults plus dependent children under 23 living in same household.
- Fees are subject to change.
- We accept payment by any major debit/credit card.

Annual membership includes unlimited use of:

- Fitness center (14 years and older)
- Shoreview waterpark, including tropics and bamboo bay
- Indoor playground (Ages 1 – 10)
- Indoor track (14 years and older)
- Basketball courts
- Whirlpool (18 years and older)
- Members registration day and the ShoreViews home mailing.

December Membership Special

\$40 one month membership (per/person, includes tax)

November 27 - December 31

- membership starts the day you sign up
- only able to purchase one month
- purchase anytime between Nov 27 - Dec 31 by 4 pm





General Information and Hours

Hours and rates are subject to change. Visit shoreviewmn.gov for the latest information.

DAILY RATES:

All guests must pay admission; including non-swimming guests and adults in the playground and gymnasium.

Children 12 and under must be supervised by an adult while in the community center

DAILY PASS	RATE	SHOREVIEW RESIDENT	MILITARY	MILITARY RESIDENT
Adult (18 and older)	\$13.50	\$10.25	\$10.75	\$9.50
Youth (1 to 17; under)	\$12	\$9	n/a	n/a
Seniors (65 and older)	\$12	\$9	\$10.25	\$8.50

INDOOR PLAYGROUND ONLY	RATE	SHOREVIEW RESIDENT
All visitors	\$6.75	\$6.25

All playground visitors must pay admission; this includes supervising adults.

COUPON BOOKS (10 DAILY PASSES)	RATE	SHOREVIEW RESIDENT
Adult	\$121.40	\$92.25
Youth/Senior	\$108	\$81
Indoor Playground	\$60.75	\$56.25

SENIOR TRACK DISCOUNT (65 & OLDER)	RATE	SHOREVIEW RESIDENT
Track use only		
Punch card (includes 10 visits)	\$54	\$45

Fees are subject to change. We accept any major debit/credit card. All rates above include sales tax. Visit shoreviewmn.gov for updates.

POOL HOURS

The waterparks, lap swim, and open swim are available at various times throughout the week.

See the service desk for a schedule or visit shoreviewmn.gov/waterpark.



KIDS CARE

Child care is available for community center customers. See page 22 for details.

DROP-IN VOLLEYBALL

Sunday, 8 – 10 am
Tuesday & Thursday, noon – 1 pm



Building Hours



CALL FOR MORE INFORMATION

Community center	651-490-4700
Recreation programs (classes)	651-490-4750
Rental information	651-490-4790
Pool rental information	651-490-4780
City information	651-490-4600

shoreviewcommunitycenter.com

HOURS

Children 12 & under must be supervised by an adult while in the community center.

DAYS	COMMUNITY CENTER	PLAYGROUND
Monday – Friday	5 am – 9 pm	8 am – 8 pm
Saturday	6 am – 8 pm	noon – 7 pm
Sunday	6 am – 8 pm	noon – 6 pm

HOLIDAY HOURS

DATES	COMMUNITY CENTER	PLAYGROUND
December 24	6 am – noon	8 am – noon
December 25	closed	closed
December 31	6 am – 4 pm	8 am – 4 pm
January 1	8 am – 9 pm	noon – 6 pm
January 15	5 am – 9 pm	8 am – 8 pm
February 19	5 am – 9 pm	8 am – 8 pm

POOL HOLIDAY HOURS

DATES	TROPICS	BAMBOO BAY
December 24	closed	9 – 11:30am
December 25	closed	closed
December 31	noon – 3pm	10am – 3pm
January 1	noon – 7pm	noon – 4pm

View the full pool schedule at: shoreviewmn.gov/waterpark



Summer Saturday Package

Book your
2024
event now



Package includes:

- Shoreview room & deck
- Haffeman pavilion
- Garden space

Saturdays, May-September

Shoreview resident \$2,000

Non-residents \$2,200

\$1000 refundable reservation deposit

SHOREVIEW ROOM

- Maximum capacity of 300 people
- Choose your own licensed caterer
- Alcohol service available with in-house provider
- \$1000 refundable reservation deposit

DAYS	RATE	SHOREVIEW RESIDENT
Sun – Thurs	\$1000	\$855
Friday	\$1,465	\$1,300
Saturday	\$1,820	\$1,600

WEDELL COMMUNITY ROOM

- Maximum capacity of 250 people
- Choose your own licensed caterer
- Alcohol service available with in-house provider
- \$1000 refundable reservation deposit

DAYS	RATE	SHOREVIEW RESIDENT
Sun – Thurs	\$715	\$590
Friday	\$1,105	\$950
Saturday	\$1,375	\$1,205

HALF COMMUNITY ROOM

- Available Sunday – Thursday
- Maximum capacity of 100 people
- \$500 refundable reservation deposit

DAYS	RATE	SHOREVIEW RESIDENT
Sun – Thurs	\$425	\$390

*Additional fees may apply
Fees are subject to change*



HAFFEMAN PAVILION & GARDEN SPACE

- Permanent picnic tables seat up to 120 guests
- Located in Commons Park, behind the community center
- Indoor room with air conditioning, restrooms, and fireplace
- Decorative pond with fountain and benches
- Ideal space for ceremonies
- Located next to the pavilion
- \$500 refundable damage deposit

Days	Month	Rate	Shoreview Res
Fri or Sun	May – Sept	\$550	\$500
Mon – Sun	Mar, Apr, Oct, Nov	\$440	\$400

PARK SHELTERS

Small shelters are available at most Shoreview parks. The daily rental fee is \$50.

Reserve online at shoreviewmn.gov.

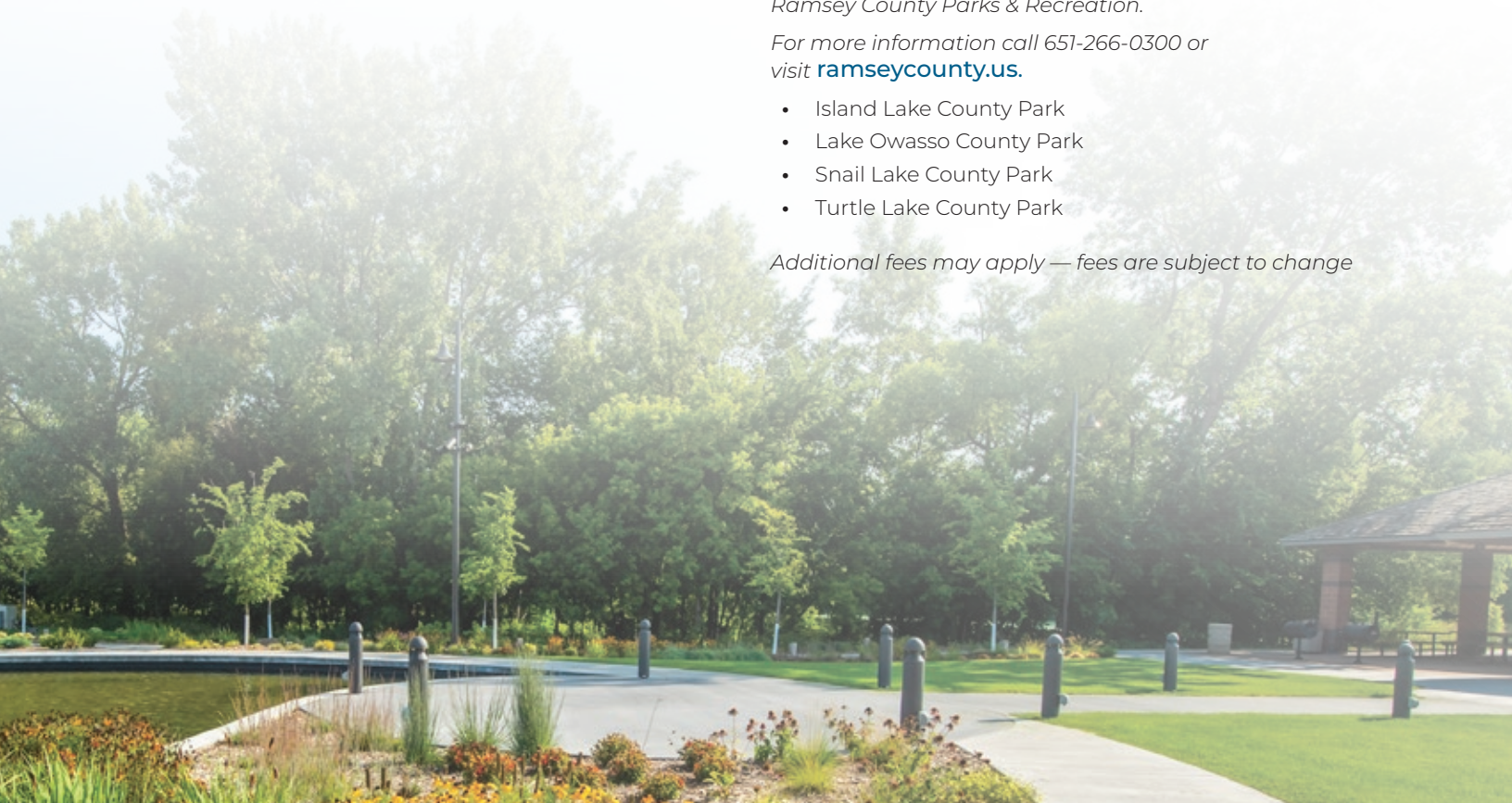
Park shelter	Capacity
Bucher	4 tables; up to 24 people
Lake Judy	2 tables; up to 15 people
McCullough	2 tables; up to 15 people
Shamrock	5 tables; up to 40 people
Sitzer	4 tables; up to 32 people
Commons	3 tables; up to 20 people

The following parks are owned and operated by Ramsey County Parks & Recreation.

For more information call 651-266-0300 or visit ramseycounty.us.

- Island Lake County Park
- Lake Owasso County Park
- Snail Lake County Park
- Turtle Lake County Park

Additional fees may apply — fees are subject to change



CONTACT US
 Monday – Friday
 9 am – 4:30 pm
 651-490-4790
rentals@shoreviewmn.gov



BAMBOO BAY EXCLUSIVE

- Exclusive access to Bamboo Bay waterpark and cabanas
- Admission included for up to 50 people
- 30 days notice required
- \$175 refundable damage deposit

Day	Time
Friday*	5 – 7:30 pm
Sunday	9 – 11:30 am

*Friday Bamboo Bay Exclusive parties have the option of adding on use of Tropics Waterpark for an additional \$125

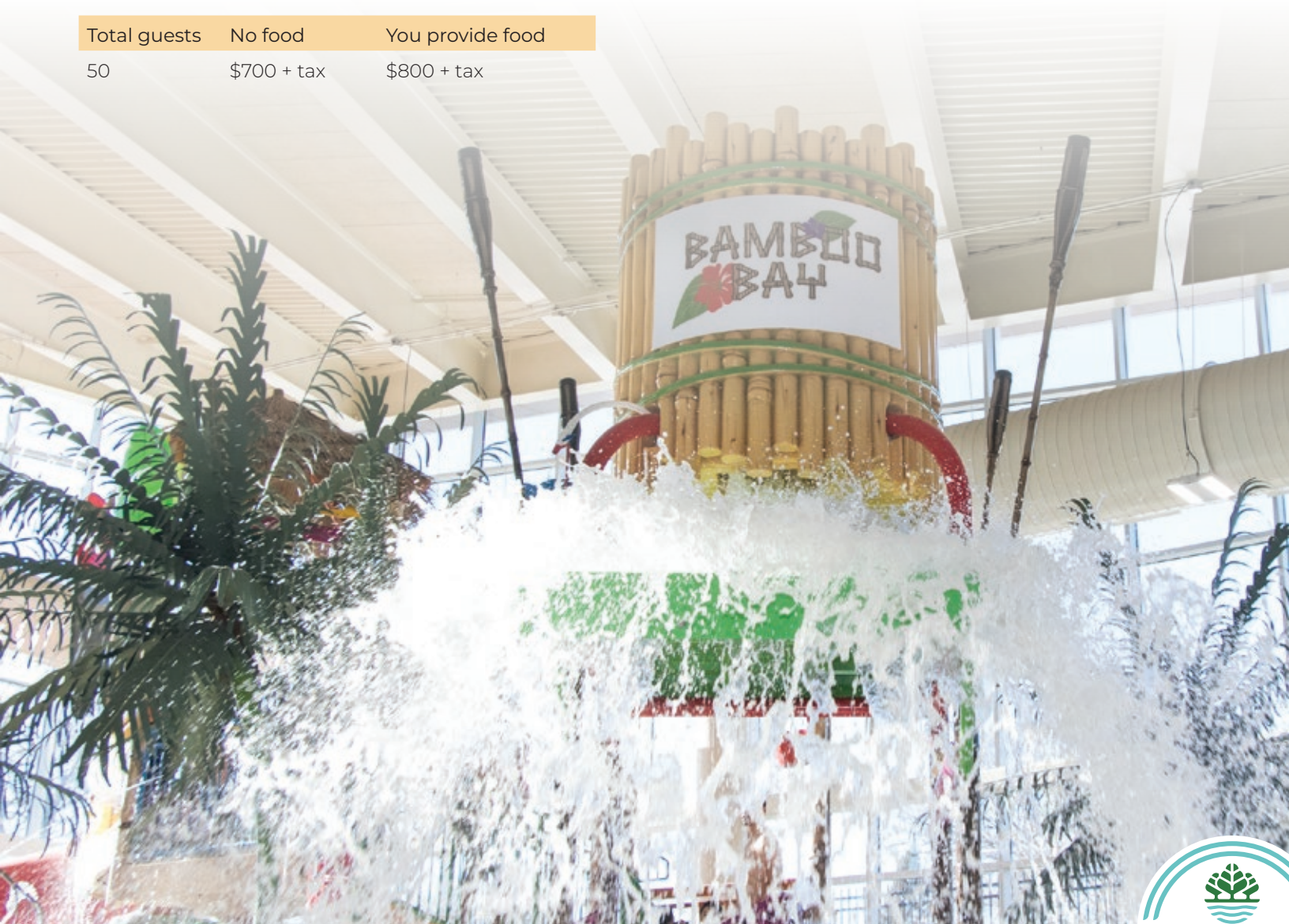
Total guests	No food	You provide food
50	\$700 + tax	\$800 + tax

INDOOR PLAYGROUND EXCLUSIVE

- Exclusive use of the indoor playground
- Includes playground admission
- Table seating for 12 guests; up to 75 people allowed in the playground area
- Bring your own food and cake
- \$100 refundable damage deposit

Days	Time
Saturday & Sunday	9 am – noon

Total guests	No food	You provide food
75	\$425 + tax incl	\$525 + tax incl



Birthday Parties & Meetings



POOLSIDE CABANA

- Semi-private space, located in Bamboo Bay waterpark
- Seating for 16 guests
- Includes 16 admission wristbands (Sat – Sun)
- \$100 refundable damage deposit

Day	Duration	Rate	Shoreview resident
Sat – Sun	3 hours	\$450 tax incl	\$400 tax incl
Tues/Thurs*	2 hours	\$240 tax incl	\$200 tax incl

*Bamboo Bay access only

POOLSIDE PARTY ROOM

- Private room, located downstairs
- Seating for 32 guests
- Includes 32 admission wristbands
- \$100 refundable damage deposit

Day	Duration	Rate	Shoreview resident
Fri, Sun	3 hours	\$625 tax incl	\$575 tax incl
Sat	2 hours	\$565 tax incl	\$515 tax incl

PLAYGROUND PARTY AREA

- Semi-private space, located in playground
- Seating for 12 guests
- Includes 12 admission wristbands (playground-only)
- \$100 refundable damage deposit

Day	Duration	Rate	Shoreview resident
Any	3 hours	\$235 tax incl	\$215 tax incl

ACTIVITY ROOM

- Private room, located upstairs
- Large windows with natural lighting
- Seating for 24 guests
- Includes 24 admission wristbands (Fri – Sun)
- Adjacent room available for extra fee
- \$100 refundable damage deposit

Day	Duration	Rate	Shoreview resident
Mon – Thurs	2 hours	\$100	\$90
Fri – Sun	3 hours	\$500 tax incl	\$450 tax incl

MEETING ROOMS 1 – 3

- Private room, located upstairs
- Seating for 16 guests
- Includes 16 admission wristbands (Fri – Sun)
- Adjacent rooms available for extra fee
- \$100 refundable damage deposit

Day	Duration	Rate	Shoreview resident
Mon – Thurs	2 hours	\$75	\$60
Fri – Sun	3 hours	\$350 tax incl	\$300 tax incl

MEETING ROOM 4

- Private room, located upstairs
- Seating for 16 guests
- Not available for birthday parties
- \$100 refundable damage deposit

Day	Duration	Rate	Shoreview resident
Mon – Thurs	2 hours	\$100	\$90
Fri – Sun	2.5 hours	\$150	\$125

All weekday rentals that fall on a Mounds View no school day are weekend rental prices and times.

Admission is included with birthday party options. Visit shoreviewmn.gov/parks-rec/event-rentals to learn more or call 651-490-4790 to book your party.





Group Fitness drop-in rate:
Regular: \$11.50, SV Res: \$10.50

GROUP FITNESS CLASSES

- Please check class schedule at the beginning of the month
- Refunds are issued for medical reasons only
- Membership is not required
- SeniorFIT classes are free to only seniors with an annual senior membership.
- All classes are 50 to 60 minutes unless otherwise noted
- Classes with three participants or fewer are subject to change or cancellation
- Group fitness classes are great for all levels
- Find out which classes best suit your needs by calling the fitness coordinator at 651-490-4768

Call for information: 651-490-4750

GROUP X CARDS

- Good for all fitness classes
- Class schedule is available online and at the community center
- Purchase at the parks & recreation desk or by phone at 651-490-4750 during office hours (Monday – Friday, 8 am – 4:30 pm)
- You can reload your Group X Card in person or by phone at 651-490-4750
- Go online to shoreviewmn.gov/fitness to reserve your spot using SignUpGenius today!

QUANTITY <i>effective January 1</i>	REGULAR	ANNUAL MEMBER	RESIDENT	RESIDENT ANNUAL MEMBER
5 Classes	\$54	\$38	\$49	\$34
10 Classes	\$104	\$73	\$95	\$67
25 Classes	\$255	\$179	\$232	\$162
50 Classes	\$488	\$342	\$443	\$310

- One Group X Card allowed per person.
- Cards are non-refundable and non-transferable.
- Member discount applies to annual memberships only. One-time drop-in passes are available at the lower-level service desk the day of class.
- SeniorFIT do not require registration.



Group Fitness



GROUP FITNESS CLASSES

- 60/40
- Barre principle
- The resistance workout
- Step cardio
- Dance jam
- Fundamental combo
- H.I.I.T. (High Intensity Interval Training)
- The Groove
- Kettlebell training
- Power strength
- Cycle rave
- Cycle training
- Total body workout
- Power pump
- Cardio kickboxing
- Zumba®

MIND/BODY CLASSES

- Stretch and balance
- Yin/restorative yoga
- Yoga basics
- Hot yoga - Class temp range is 80 – 90 degrees.
- Fitness Pilates
- Power yoga
- Yoga/Pilates fusion
- Yoga sculpt

WATER FITNESS CLASSES

All water classes are held in the pool.

- The pool is between 3 1/2 and 4 1/2 feet deep
- All fitness levels are welcome
- The pool temperature is between 83 – 84 degrees
 - Aqua fit
 - SeniorFIT aqua exercise

New! Aqua Splash classes
See page 35



Scan the code to view group fitness class descriptions.

KIDS CARE UPDATE

KIDS CARE payments will be transitioning to a punch card system for all payments beginning **January 2**.

- purchase at the parks and recreation desk or community center sales office
- \$2 per hour rate for punch cards (punch cards are available for purchase in quantities of 10, 25, or 50 hours)
- \$3 per hour drop-in rate (paid at the community center service desk)
- punch card sale with discounted rate available January 2 – 31
- punch cards are non-refundable

KIDS CARE

Kids Care provides a stimulating and safe environment for children 6 months to 12 years of age. Kids can explore and interact with other children while you enjoy the community center's amenities. First come, first served.

- Max 2 hour stay (must stay in the building)
- Kids Care phone number: 651-490-4763

CLOSED

December 25 & January 1

COST

\$3 per hour

(no pro-rating for partial hours)

HOURS

Monday – Saturday: 8 am – 12:30 pm

Monday – Thursday: 4 – 8:30 pm*

**starting Jan. 2, closing time will be 8 pm*

Friday: 4 – 7pm

PUNCH CARD
10 hours: \$20
25 hours: \$50
50 hours: \$100





SENIORFIT CLASSES

SeniorFIT classes are free to annual senior members. If you are not an annual senior member, you may purchase a Group X Card or a drop-in pass. See page 21 for Group X Card information. All fitness levels are welcome.



Scan the code to view SeniorFIT class descriptions or visit online at shoreviewmn.gov

- SeniorFIT chair yoga
- SeniorFIT strength training
- SeniorFIT aqua exercise
- SeniorFIT let's move

WINTER SESSION :

January 2 – March 29

Registration is not required.



CLASS/INSTRUCTOR	DAY	TIME
Chair yoga: Beth	Monday	8:30 am
Aqua exercise: Fran	Monday	9 am
Strength training: Nancy/Perry	Tuesday	8:30 am
Chair yoga: Scott	Tuesday	2 pm
Chair yoga: Gretchen	Wednesday	8:30 am
Aqua exercise: Fran	Wednesday	9 am
Let's move: Nancy/Perry	Thursday	8:30 am
Strength training: Denise	Friday	8:30 am
Chair Yoga: Adrienne	Friday	9:30 am



Fitness & Adult Sports



COMMUNITY CENTER MEMBER EQUIPMENT ORIENTATION (INDIVIDUAL OR GROUP)

Get introduced to fitness center equipment and learn how to utilize strength and cardio equipment safely. The schedule and sign-up sheet for equipment orientations is located at the fitness center desk.

The first orientation for members ages 14+ is free. For more information call 651-490-4768.

AGES	COST
14+	Free to members

PERSONAL TRAINING

- Personal training comes in packages of 3, 6 and 12 sessions
- All sessions expire one year from the date of purchase
- Trainers help you set realistic goals and determine safe strategies to achieve them
- Trainers will customize a program to fit your ability and health
- Trainers monitor progress and adapt your routine for consistent improvement
- Learn fitness principles and correct form to aid in progress and prevent injuries

INDIVIDUAL PERSONAL TRAINING*

effective January 1

SESSIONS	REGULAR	RESIDENT
3	\$243	\$219
6	\$460	\$414
12	\$871	\$784
24	\$1,648	\$1,446

BUDDY PERSONAL TRAINING

Two participants train together and each pay the fee below.

SESSIONS	REGULAR	RESIDENT
3	\$186	\$167
6	\$346	\$311
12	\$655	\$590



\$50 Pickleball Punch Card (11 visits)

DROP-IN PICKLEBALL

All are welcome! You do not need to be a member of the Shoreview Area Pickleball Club for indoor drop-in play.

Punch card is good for both drop-in locations and can be purchased at the parks and recreation office.

Office hours: Monday – Friday, 8 am – 4:30 pm

AGE	DATE & TIME	COST	LOCATION
18+	Mon – Fri, Oct 2 – April 26 8 – 11 am*	FREE to SCC members, \$5 for non-members	Community Center
18+	Wed, Oct 4 – May 8 5:30 - 9:30 pm	\$5 per person (cash only)	Island Lake Elementary

*No pickleball: Nov 20 – 24, Dec 22 – Jan 1, Mar 11 – 15, April 10 - 12





Senior LinkAge Line



800-333-2433 |
Veterans line 888-546-5838

A free state-wide resource supporting older Minnesotans and their caregivers. Get connected to local resources, housing, Medicare information, and free classes. Senior LinkAge line is a division of the MN Board on Aging; working to ensure that all Minnesotans can age and live well.

AARP Foundation Tax Aide

AARP Foundation TaxAide volunteers provide free tax assistance to seniors and low income individuals. Trained volunteers will complete basic Federal and MN State tax forms and answer your tax questions. Bring your current tax records, last year's tax return, social security card and picture ID. Income tax appointments last 1-2 hours based on complexity.

Registration opens Dec 12, 9 am. Make your appointment online, in person or call 651-490-4750. If an appointment time is full DO NOT join the online waitlist. Call to add yourself to our waitlist.

TaxAide Volunteers

TaxAide needs volunteers: If you are interested in volunteering as a member of the AARP Tax Team contact local District Coordinator, Maggie Bratton: mbtaxes77@gmail.com. No experience necessary, all materials provided with an extensive IRS approved training program is provided.

East Side Learning Center Volunteer opportunities



AARP Foundation Experience Corps Twin Cities is proudly hosted by East Side Learning Center, a nonprofit organization that brings literacy tutoring to young students who are not yet reading at grade level by pairing them with community elders who serve as their mentors and provide them vital reading support. We currently have a great need for more volunteer Literacy Mentors for the upcoming school year. Join us in our mission to unlock each child's potential through the foundation of reading! Please visit EastsideLearningCenter.org to for volunteer opportunities.

FREE TEN-MINUTE FUNCTIONAL BALANCE SCREENING BY OSI PHYSICAL THERAPY



Make an appointment for an in-person screening to measure your fall risk and identify areas to strengthen. Past participants are fans and recommend the evaluation to their friends. You can re-test to see your progress.

EVALUATE:

- Static and dynamic balance systems to establish fall risks
- Identify any areas that could benefit from focused strength training
- Identify simple assistive devices

Ten minute appointments available from 9 – 10 am. Register online or call 651-490-4714.

Location: community center

Registration deadline: one week before class

AGES	DATE & TIME
55+	Tues, Dec 5
	Tues, Jan 2
	Tues, Feb 6
	Tues, March 5

DEMENTIA CAREGIVER SUPPORT GROUP WITH RESPITE CARE

This support group is led by a trained facilitator from Alzheimer's Speaks. Your loved one can enjoy activities in a nearby room. The program is free. Registration requested but drop-ins are welcome if space is available.

Location: community center

AGES	DATE & TIME
18+	Wed, Dec 27, 10 – 11:30 am
	Wed, Jan 31, 10 – 11:30 am
	Wed, Feb 28, 10 – 11:30 am
	Wed, March 27, 10 – 11:30 am



Adult Programs



AARP SMART DRIVER

Taught by AARP trained instructors, Smart Driver teaches safe driving techniques to help keep you and your loved ones safe on the road. Insurance discounts for those 55+ after completing the eight-hour introductory course.

A four-hour refresher course is required every three years.

Have your AARP member number ready when you register for a discounted registration.

Location: community center

Registration deadline: one week before class

4-HOUR REFRESHER COURSE

AGES	DATE & TIME	COST
55+	Tues, Nov 28 9 am – 1 pm	\$33; \$26 AARP member
55+	Tues, Dec 19 1 – 5 pm	\$33; \$26 AARP member
55+	Wed, Jan 3 9 am – 1 pm	\$33; \$26 AARP member
55+	Tues, Jan 30 9 am – 1 pm	\$33; \$26 AARP member
55+	Mon, Feb 12 1 – 5 pm	\$33; \$26 AARP member
55+	Wed, Feb 28 9 am – 1 pm	\$33; \$26 AARP member
55+	Wed, March 27 1 – 5 pm	\$33; \$26 AARP member

8-HOUR COURSE

AGES	DATE & TIME	COST
55+	Tues & Wed, Dec 5 & 6 9 am – 1 pm	\$33; \$26 AARP member
55+	Tues & Wed, March 5 & 6 9 am – 1 pm	\$33; \$26 AARP member

AARP Smart Drivers Volunteers Needed

Do you have a passion for helping others and want to be a part of a team making your community safer? Consider the AARP Smart Driver instructor team.

It's fun, engaging and free training is provided. Make a difference in the Shoreview community.

Learn more and sign up now at aarp.org/volunteernow.



Become an AARP driver safety volunteer

TODAY!



PRE-DIABETES SCREENING EVENT

One in three adults in the U.S. have pre-diabetes and 80% don't know they have it. Without action people with pre-diabetes could develop type 2 diabetes within 5 years.

Learn about pre-diabetes and the CDC's Diabetes Prevention Program (DPP). This evidence-based program is proven to reduce your risk of developing type 2 diabetes by over 56%. Take a risk assessment to help you determine next steps. You only need to register for one session.

Led by **Brynne Gadbury, Certified Diabetes Prevention Program Coach**

Location: community center

Registration deadline: one week before class

AGES	DATE & TIME	COST
18+	Mon, Dec 11 noon – 1 pm	\$8; \$7 SV Res
18+	Mon, Jan 8 noon - 1 pm	\$8; \$7 SV Res
55+	Fri, Feb 16 noon - 1 pm	\$8; \$7 SV Res

BALANCE FOR HEALTH

Curious about what happens with balance as we age? Learn from physical therapists about our body systems that are involved in balance:

- how medications and medical conditions might impact your fall risk
- prevent/minimize falls
- baseline testing of your current balance compared to age/ gender norms
- simple exercise to improve balance,
- posttest down the road to see how much you have improved your balance.



Location: community center

Registration deadline: one week before class

AGES	DATE & TIME	COST
55+	Mon, Jan 8 noon – 1 pm	\$5; \$4 SV Res



Adult Programs

PIECE OUT Puzzle Challenge!

Puzzlers, get your team together and come to the inaugural Piece Out jigsaw puzzle challenge! Teams of two to four people will compete to finish a 500-piece puzzle in the shortest amount of time. Puzzle provided. Prize for first and second-place finishers.

- Competition starts at 10 am sharp.
- Up to 4 people per team
- Identical puzzles provided, hidden until start
- Hands only. No: cutting devices, flashlights, phones or other aides
- No interference, distractions or assistance from contestants onlookers.
- Food and beverages (non-alcoholic) at your own risk.

The first team to complete and get the judge's approval wins. Gift cards awarded to 1st and 2nd place teams.

If the time expires before any team finishes, the remaining pieces are counted to determine a winner. Remaining teams are welcome to stay and complete their puzzle until the end of the event.

Location: New Brighton Community Center

Registration deadline: January 13

Check-in: 9:30 am

AGES	DATE & TIME	COST
12+	Sat, Feb 10 10 am – noon	\$30 per team

500 CARD CLUB

Join us for cards and conversations.
No partner required.

Location: community center fireside lounge
No registration required

AGES	DATE & TIME	COST
21+	Mondays, 12:30 pm	Free

CREATE ART WITH MIXED MEDIA

Explore texture, color and creativity as you use epoxy resin, alcohol inks, and other media to create unique pieces of colorful art. No experience needed.

Location: community center

Registration deadline: January 13

Check-in: 9:30 am

AGES	DATE	TIME	CLASS	COST
18+	Thurs, Jan 18	6 - 8 pm	Snowman with paint, glass, and resin	\$63; \$58 SV Res
18+	Thurs, Feb 15	6 - 8 pm	Hearts from glass and resin	\$63; \$58 SV Res
18+	Thurs, March 21	6 - 8 pm	Alcohol ink coasters	\$63; \$58 SV Res
18+	Thurs, April 18	6 - 8 pm	Paint glass and resin potted flower	\$63; \$58 SV Res

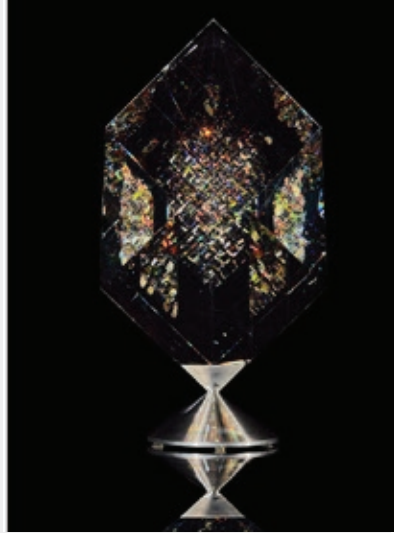
EASY PAINTING

No experience necessary. Use easy to learn one-stroke painting with acrylics. Class includes step-by-step instruction and painting supplies. You'll leave with your very own masterpiece!

Location: community center

Registration deadline: one week before class

AGES	DATE	TIME	CLASS	COST
18+	Mon, Jan 22	1 - 4 pm	Winter Bliss	\$48; \$44 SV Res
18+	Mon, Feb 5	1 - 4 pm	Pretty in Pink	\$48; \$44 SV Res
18+	Mon, March 11	1 - 4 pm	Bird House Floral	\$48; \$44 SV Res
18+	Mon, April 8	1 - 4 pm	Welcome Spring	\$48; \$44 SV Res



**DAY TRIP TO:
FOOLING THE EYE AT THE CAT**

The Cafesjian Art Trust Museum, or CAT, was established by Gerard Cafesjian to share his collection of Contemporary and Modern art with the public.

Join us for a private tour of this exciting and innovative new gallery exploring the use of optics and perception through the artwork of Victor Vasarely and John Kuhn. Through the use of shading and linear elements, these ingenious works play with the illusion of movement and the relationship of color and light.

Fully accessible and minimal walking with seating available throughout the exhibit.

Location: 4600 Churchill St., Shoreview
Registration deadline: February 1

AGE	DATE & TIME	COST
21+	Thurs, Feb 8 10 am – 11:30 pm	\$6; \$5 SV Res

**DAY TRIP TO:
“PAL-ENTINE’S” LUNCH AT CAROL’S & SHOPPING AT THE VINTAGE ROSE GIFT SHOP**

Make a new friend or grab one of your pals for lunch at Carol’s in Blaine. After lunch we’ll spend a little time shopping at The Vintage Rose gift shop, known for beautiful and unique gifts. Trip includes New Trax transportation. Lunch and shopping not included.

Location: Meet at community center fireside lounge.
Registration deadline: February 1

AGE	DATE & TIME	COST
18+	Tues, Feb 13 10:30 am – 1:15 pm	\$21 (Bring money for lunch & shopping)

Adult Programs

HOLIDAY FAVORITE WITH THE NORTH SUBURBAN CHORUS

Enjoy coffee, cookies, and holiday music with the talented singers in the North Suburban Chorus.

Location: community center
Registration deadline: December 1

AGE	DATE & TIME	COST
All Ages	Tues, Dec 5 1 pm – 3 pm	FREE

Register Now!

**DAY TRIP TO:
CHURCH BASEMENT LADIES IN A MIGHTY FORTRESS IN OUR BASEMENT**

It’s 1960 and Beverly gets her first pair of high heels for confirmation; Pastor announces his impending nuptials; Mrs. Snustad and Mrs. Gilmerson plan a food booth at the County Fair to raise money; and Mrs. Engelson embarks on a spontaneous driving lesson. Through it all these “bulwarks never failing” stand strong in their faith and in their friendships. We’ll have lunch before the show at The Mediterranean Cruise Café. A Greek-inspired menu with some classic American favorites starting at \$11, soups, salads and a buffet available for \$18 (lunch not included with registration).

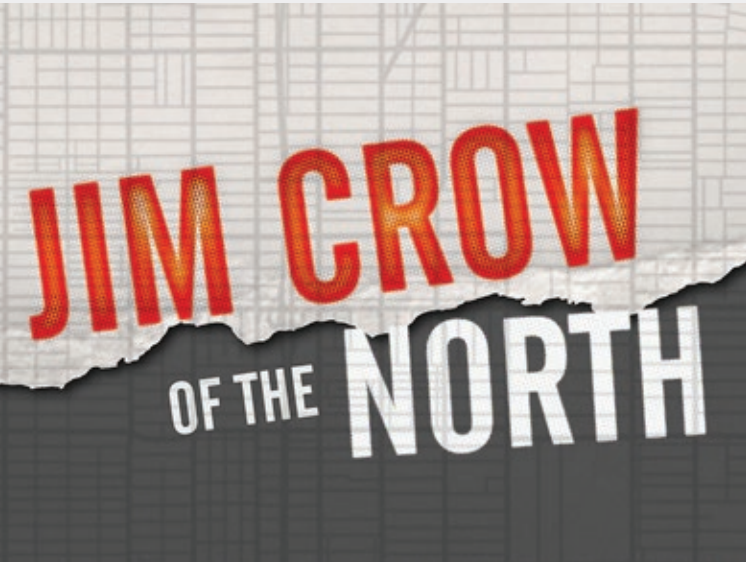


Transportation provided by New Trax small mobility buses.

Location: Meet at community center fireside lounge.
Registration deadline: December 14

AGE	DATE & TIME	COST
18+	Wed, Jan 10 11 am – 2 pm	\$73, (lunch is not included)





JIM CROW OF THE NORTH

February is Black History Month and we're honored to welcome Executive Producer, Daniel Pierce Bergin to view his riveting 2018 documentary, Jim Crow of the North. The show explores the origins of housing segregation in the Minneapolis area. Daniel will show and lead a discussion on updated stories featuring people working to discharge racial covenants. Refreshments provided by the North Suburban Neighbors Club.

Location: community center

Registration deadline: February 8

AGE	DATE	COST
ALL	Thurs, Feb 15, 10 am - noon	FREE

TRAVEL SHOW WITH JEANIE'S JOURNEYS

Jeanie from Jeanie's Journeys will be talking about some amazing tours for 2024. Join us for a free talk and get answers to your questions.

UPCOMING TRIPS:

- Pickleball on the High Seas of the Caribbean
- American Founders Tour with Traveling Professor through Virginia
- Cruising England & Ireland
- Grand Hotel Mackinac Island
- Voyage of the Glaciers, Alaska

Location: community center

Registration deadline: n/a

AGES	DATE & TIME
------	-------------

18+
Thurs, Dec 14
1-2 pm

LANDMARK TOURS

Landmark Tours is a premier, local, family-owned tour operator. Their all-inclusive packages feature round-trip airfare.

UPCOMING TRAVEL OPPORTUNITIES INCLUDE:

- Highlights of England & Scotland
- Northern California with Yosemite, Wine Country, & San Francisco
- Cape Cod with Martha's Vineyard & Nantucket
- Greece & The Aegean Sea Cruise
- Kenya: African Safari
- American West with Monument Valley

Location: community center

Registration deadline: n/a

AGES	DATE & TIME
------	-------------

18+
Wed, Jan 17
1-2 pm



Swim Lessons



SHOREVIEW PARKS & RECREATION SWIM LESSONS

Our mission is to provide inclusive swim lessons for everyone. Our fun and imaginative approach to lessons will help you create a lifelong love of swimming. Pick your best learning environment - group lessons or private lessons. Parent-to-instructor communication is key to successful lessons. Our instructors love to teach and receive ongoing training.

Swim lesson policies

- We do not provide make-up swim lessons for any classes.
- Participants will be emailed specific programs policies before the class starts.

Cancellation policies & fees

- \$5 if you cancel at least one week before the class start date.
- \$10 if you cancel within one week of the class start date.
- No refunds on or after the class start date.

A note about swim lessons

- Due to high demand, private lessons are limited to 2 sessions per participant, per session.
- Swim lessons are not canceled if Mounds View School District cancels after school activities due to weather.
- Group classes with fewer than three registered participants will be canceled.
- Students are not allowed to swim before or after lessons.
- Students should use the bathroom and shower before entering the pool area.
- Staff aren't allowed to take students to the bathroom.
- If your child needs a quieter environment to learn, look at our Tuesday, Thursday, Saturday and Sunday lessons.
- Children ages 4 and under may use any locker room.
- Children ages 5 and older must use the same sex locker room or family locker room.
- The pool water temperature is kept at 85 degrees.

FREE SWIM LESSON CHECKS

Not sure of what level to register your child for? Reserve your time at shoreviewmn.gov If your child has been away for more than three months we recommend repeating the previous level.

DAY	DATE	TIME
Sunday	Nov 19	10 – 11 am
Tuesday	Feb 27	6 – 7 pm
Saturday	Mar 2	10 – 11 am

PRIVATE LESSONS (PR) AGES 3 – ADULT

Private and semi-private lessons offer one-on-one training so you're able to learn at your own pace. Lessons are 30 minutes and available at set times.

NUMBER OF LESSONS	COST	COST SV RES
6	\$161	\$146

SEMI-PRIVATE LESSONS

- You must have two people at the same ability for a semi-private lesson
- Register one child for a regular private lesson then visit or call Parks & Rec 651-490-4750 to have the lesson switched to semi-private
- Rate listed per person

NUMBER OF LESSONS	COST	COST SV RES
6	\$121	\$110

CUSTOM PRIVATE LESSONS

- Flexible scheduling with three months to complete after first lesson starts
- Option to reschedule with advance notification
- For more information contact the aquatic coordinator at 651-490-4766.
- Rate listed per person

CUSTOM PRIVATE LESSONS:

NUMBER OF LESSONS	COST	COST SV RES
8 lessons	\$242	\$220
6 lessons	\$215	\$196
4 lessons	\$141	\$128

CUSTOM SEMI-PRIVATE LESSONS:

NUMBER OF LESSONS	COST	COST SV RES
8 lessons	\$171	\$156
6 lessons	\$143	\$131
4 lessons	\$104	\$93



Swim Lessons



GROUP LESSONS

- Group lessons will have one instructor to a maximum of four students.
- Group lessons are 40 minutes unless noted.
- Parent/child lessons are 30 minutes.

NUMBER OF LESSONS	COST	COST SV RES
6 lessons	\$90	\$82



PARENT/CHILD LESSONS

PARENT/CHILD (PC 1)

AGES 9 MONTHS – 2½ YEARS

- Enter/exit water with assistance
- Blow bubbles & submerge head
- Front/back float with guardian & instructor
- One adult must accompany each child in the water.

PARENT/CHILD 2 (PC 2)

AGES 2 – 3½

A parent accompanies their child in the water for the first few weeks and gradually reduces participation

- Enter/exit water independently
- Blow bubbles & submerge head
- Front/back float with instructor
- Front/back glides with assistance
- Front/back flutter kicking with instructor



BEGINNER LESSONS

BEGINNER 1 (B1)

AGES 2 ½ – 4

- Independent entry/exit
- Front/back floats with assistance — 3 seconds
- Front/back glides with assistance
- Front/back flutter kicking with support
- Front crawl arms with face in the water

BEGINNER 2 (B2)

AGES 3 – 5 OR PASSED B1

- Independent front/back floats — 5 seconds
- Front/back glides
- Front/back flutter kicking
- Front crawl arms with flutter kick
- Rhythmic breathing

BEGINNER 3 (B3)

AGES 3 – 5 OR PASSED B2

- Independent front/back floats — 8 seconds
- Independent front/back glides with flutter kicking
- Front/back flutter kicking — 8 yards
- Front crawl with rhythmic breathing with assistance

BEGINNER 4 (B4)

AGES 4 – 6

- Independent front/back floats — 10 seconds
- Independent front glide into front crawl
- Front/back flutter kicking — ½ length
- Front crawl with rhythmic breathing with assistance — 8 yards

YOUTH BEGINNER (YB)

AGES 6 – 12

New to swim lessons or haven't been in lessons for several years

- Independent front/back floats — 10 seconds
- Independent front/back glides with flutter kick
- Front/back flutter kicking — ½ length
- Front crawl arms with rhythmic breathing





INTERMEDIATE LESSONS

INTERMEDIATE 1 (I1)

AGES 5 – 7

- Front/back flutter kicking — ½ length
- Independent back glide with flutter kicking
- Flutter kick with rhythmic breathing — ½ length
- Front crawl with rhythmic breathing — ½ length

INTERMEDIATE 2 (I2)

AGES 5 – 13

- Front glide into front crawl — 8 yards
- Back glide into back crawl — 8 yards
- Front/back flutter kicking — 25 yards
- Back crawl with assistance — 8 yards
- Elementary backstroke kick — ½ length
- Tread water

INTERMEDIATE 3 (I3)

AGES 5½ – 13

- Front crawl with rhythmic breathing — 25 yards
- Back crawl — ½ length
- Elementary backstroke — ½ length
- Tread water

INTERMEDIATE 4 (I4)

AGES 5½ – 13

- Front crawl with open turn — 50 yards
- Back crawl — 25 yards
- Elementary backstroke — 25 yards
- Open turn — front
- Whip kick — 25 yards



ADVANCED LESSONS

ADVANCED 1 (A1)

AGES 6 – 13

- Front crawl with flip turns — 75 yards
- Back crawl with open turns — 50 yards
- Elementary backstroke — 25 yards
- Breaststroke — 25 yards
- Breaststroke whip kick
- Flip turns

ADVANCED 2 (A2)

AGES 6 – 13

- Front crawl with flip turns — 100 yards
- Back crawl w/open turns — 75 yards
- Breaststroke w/underwater pull out — 50 yards
- Breaststroke underwater pull out
- Dolphin kick — 25 yards
- Scissors kick — 25 yards

ADVANCED 3 (A3)

AGES 6 – 13

- Front crawl with flip turns — 150 yards
- Back crawl with open turns — 100 yards
- Breaststroke with underwater pull out — 75 yards
- Butterfly — ½ length
- Sidestroke — 25 yards

INTRODUCTION TO SWIM TEAM (IS)

Begin your journey into competitive swimming by working on stroke technique, competitive turns, and build endurance in butterfly, backstroke, breaststroke, and freestyle.

This class in one hour.

Cost: \$138 Non-res; \$125 SV res



ADULT LESSONS

ADULT BEGINNER (AB)

AGES 18+

With the guidance of our swim instructors you will learn basic swimming skills in a safe environment while gaining confidence in the water. Participants will learn:

- Front/back floats
- Front/back kicking w/support
- Breathing
- Comfort in water independently



Swim Lessons



Lesson Rates

Group lessons 6 lessons \$90; \$82 SV Res

Private lessons 6 lessons \$161; \$146 SV Res

Semi-private* 6 lessons \$121; \$110 SV Res

** Two participants of equal ability*

SWIM LESSONS SCHEDULE

Visit shoreviewmn.gov/parks-rec for full swim lesson schedule

One day a week for six weeks

DAY	DATE	TIME
Monday	Jan 22 – March 4 (no class Feb 19)	5 – 8 pm
Tuesday	Jan 9 – Feb 13	5 – 8 pm
Wednesday	Jan 10 – Feb 14	5 – 8 pm
Thursday	Jan 11 – Feb 15	5 – 8 pm
Saturday	Session 1: Jan 6 – Feb 10 Session 2: Feb 17 – March 23	8:30 – 11:45 am
Sunday	Jan 7 – Feb 11	8:30 – 11:45 am

Two days a week for three weeks

DAY	DATE	TIME
Tues/Thurs	Feb 20 – March 7	5 – 8 pm





KEY LOG ROLLING

Join our single day sessions to learn the basics of log rolling from one of our trained Key Log Rolling instructors! Classes will focus on building and improving skills while helping beginners learn new skills.

Location: community center

Registration deadline: one week before class

AGES	DATE & TIME	COST
8+	Thurs, Feb 8 6:45 – 7:45 pm	\$20
8+	Thurs, Feb 22 6:45 – 7:45 pm	\$20

AQUA SPLASH

Grab your little one for some family fun aqua fitness! Experience a resistance workout with a twist; in lieu of traditional equipment you will use your child as resistance!

Location: community center

Registration deadline: one week before class

AGES	DATE & TIME	COST
Children ages 1 – 3	Thurs, Dec 7 - 21 3 – 4 pm	\$33/pair
Children ages 1 – 3	Thurs, Jan 4 - 18 3 – 4 pm	\$33/pair
Children ages 1 – 3	Thurs, Feb 8 - 29 3 – 4 pm	\$33/pair

GALENTINE'S DAY ADULT MERMAID EXPERIENCE

Grab your favorite gals and come celebrate Galentine's Day together under the sea. Join us for a unique experience where you will be able to become a mermaid and swim with mermaid tails and mono fins. Be part of their world.

We will provide the non-alcoholic cocktails with some light food for everyone to enjoy during the first 30 minutes to socialize and pick out your mermaid tail

Location: community center

Registration deadline: one week before class

AGES	DATE & TIME	COST
18+	Tues, Feb 13 6:45 – 8:15 pm	\$45

JR. LIFEGUARD

Participants interested in beginning their lifeguarding skills will learn about:

- Recognizing a swimmer in distress
- Rescues for an active swimmer
- Rule enforcement and customer service
- First aid certification

Prerequisites:

- Front crawl or breaststroke 50 yards
- Retrieve a 10 pound brick from pool depth of 4 feet
- Swim underwater for 10 feet

Location: community center

Registration deadline: one week before class

AGES	DATE & TIME	COST
13 – 14	Dec 27 – 29 8:30 am – noon	\$50



Aquatic Programs



New Year



Family Resolution Pop-up Series

MERADVENTURES FOR TEENS

Create an unforgettable experience with your friends that includes games, challenges, and a great core workout.

Mermaid tails and monofins provided

Location: community center

Registration deadline: one week before class

AGES	DATE & TIME	COST
12 – 17	Thurs, Jan 4 6 – 7:30 pm	\$45

FAMILY AQUA FIT

Our classes offer a full body workout and resistance training in the water for your whole family. Class will be held in water between 3 ½ and 4 feet deep.

Location: community center

Registration deadline: one week before class

AGES	DATE & TIME	COST
6+	Thurs, Jan 11 6 – 6:45 pm	\$12

AQUA BUBBLES WATER DISCOVERY

Explore the water with your child in fun and imaginative ways to develop swim readiness skills through songs and games.

- One adult must accompany each child in the water
- 30 minutes of instruction
- 15 minutes of play time

Location: community center

Registration deadline: one week before class

AGES	DATE & TIME	COST
Children ages 1 – 3	Wed, Jan 17 10:15 – 11 am	\$15/pair

GET YOUR FAMILY ROLLING!

Join our Key Log Rolling intro class and improve your balance and body awareness! This course is perfect for families that want to try a new and fun activity with one of our trained instructors

Location: community center

Registration deadline: one week before class

AGES	DATE & TIME	COST
8+	Sat, Jan 27 10 – 10:45 am	\$12

FAMILY SNORKELING

Learn the basics of snorkeling before your upcoming family trip. A variety of swimming abilities are encouraged to join us, but basic swimming skills are needed. Equipment provided.

Location: community center

Registration deadline: one week before class

AGES	DATE & TIME	COST
7+	Sun, Jan 28 10:30 – 11:30 am	\$12



We're hiring!

free training flexible hours
free community center membership

current openings:

child care attendant • lifeguard
manager on duty • pool coordinator
special events staff • swim instructor
service desk • wave cafe • rink attendants

apply online at
shoreviewmn.gov/jobs



Apply now
for summer
positions!

NEW!

Kids Care Punch Card

10 hours for
\$20

25 hours for
\$50

50 hours for
\$100

January
discounted rate available

\$3 per hour for drop in rates



kidscorner preschool



September 9, 2024 – May 22, 2025
A \$75 non-refundable fee is required
at the time of registration.

Registration opens: Wednesday, Jan 24

Kids corner offers students fun and educational experiences that help get them ready for kindergarten.

Located inside the community center, students have an opportunity to play and explore indoor and outdoor playgrounds, the gymnasium, and outdoor nature areas. Outdoor nature and science programming provides a unique learning experience you won't find at most preschools.

Daily snack included.

Calendar follows Mounds View School District 621 non-school days. Must be toilet-trained

A TO Z: FULL DAY PRESCHOOL PROGRAM

- Structured learning 9:30am – 3:30pm
- Lunch not provided — students need a bag lunch and drink
- Skill work: letters numbers, colors, shapes, printing, counting, beginning math
- Weekly nature based play, music, physical education, swimming and library visits
- **Must be toilet-trained**
- **Must be age 3 by June 1, 2024**

AGES	DATE & TIME	WEEKLY FEE
3 – 5	Mon – Fri 7 am – 5:30 pm	\$300; \$275 SV Res
3 – 5	Mon, Wed, Fri 7 am – 5:30 pm	\$210; \$195 SV Res
3 – 5	Tues & Thurs, 7 am – 5:30 pm	\$160; \$150 SV Res



Open House!

Saturday, Jan 20 9:30 – 11 am

Come ask questions,
see the classrooms,
and meet the teachers.

2½ - 3 YEARS OLD

- Early learning: colors, shapes, patterns, days of the week and more.
- Great first time classroom experience
- Socialization skills in a large group environment
- Curriculum varies on classes.
- **Must be 3 by May 31, 2025**

CLASS	DATE & TIME	MONTHLY FEE
Monday Funday	Mon, 9:30 am – 11 am	\$90; \$82 SV Res
Wednesday Funday	Wed, 9:30 – 11 am	\$102; \$93 SV Res
Friday Funday	Fri, 9:30 – 11 am	\$87; \$79 SV Res

3 – 4 YEARS OLD

- Early learning: letters, numbers, colors, shapes, writing skills, and social skills.
- Weekly large motor and physical education time included.
- **Must be 3 by September 1, 2024**

CLASS	DATE & TIME	MONTHLY FEE
ABC's & 123's	Tues & Thurs 9:30 am – noon	\$207; \$180 SV Res

3 – 5 YEARS OLD

- Skill work: letter recognition, printing counting, early math, cutting and scissors
- Weekly large motor skills/physical education time included.
- **Must be 3 by June 1, 2024**

CLASS	DATE & TIME	MONTHLY FEE
Stepping Stones	Mon, Wed, Fri 9:30 am – noon	\$300; \$260 SV Res
Alpha Kids	Tues & Thurs 9:30 am – 3:30 pm	\$317; \$296 SV Res



Special Events



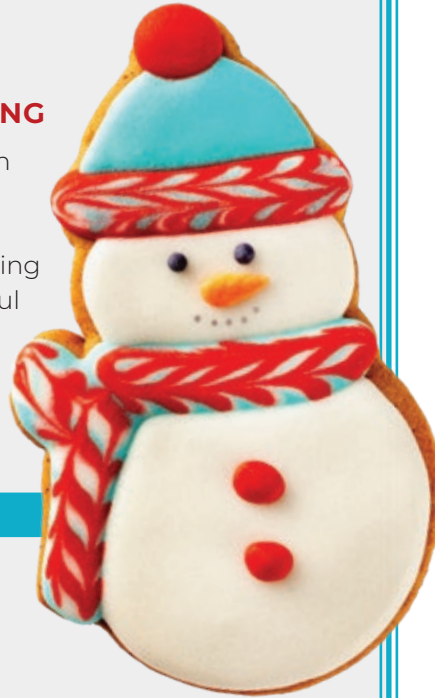
HOLIDAY COOKIE DECORATING

Come have fun and decorate a dozen holiday cookies! Each child will get a dozen cookies and be provided with all the decorating supplies. Please bring a container to transport your beautiful cookies home! Children must be accompanied by an adult.

Location: community center

Registration deadline: December 7

AGES	DATE & TIME	COST
12 & under	Thurs, Dec 14 6 – 7 pm	\$25



SHOREVIEW

Farmers Market



INDOOR FARMERS MARKET

Located in the upper level of
the community center

Saturday, December 16
9 am – noon

Local Fresh Produce
Handcrafted Artisan Items

New Year's Eve Party

Sunday, December 31, 5 – 8 pm

\$15
per
ticket

Bring the whole family out to ring in the new year at the community center!

Inflatables, face painters, access to Tropical Adventures, Tropics Waterpark and Bamboo Bay and alot more fun!

Pre-registration required.

Registration deadline: December 31 at noon



Holiday Winter Events



Santa Cruise

Monday, December 4

Watch for Santa as he makes his way around Shoreview on top of a Lake Johanna Fire Department truck.

Check out our website for route details.



Santa's Workshop

Saturday, December 16

Session 1: 9 – 10am

Session 2: 10:30 – 11:30am

Ages: 5 – 12

cost
\$12

Spend the morning with Santa at his workshop! Pre-registration required.

Registration deadline: December 11

Letter from Santa

cost
\$5
per letter

Santa's elves want to make sure your child receives their letter from Santa this year! Sign up by December 8 to ensure your letter is received before the holiday.



Kids' Secret Holiday Shopping Spree

Saturday, December 16
9 am – noon, Ages: 3 – 12

Stop by the community center to shop for the perfect gift for friends and family with the help of a personal shopper. Gifts range from \$2 – \$20.



Special Events



Sweetheart Dance

Friday, February 9

Put on your party clothes, grab a special adult, and join us for our annual sweetheart dance! There will be a DJ playing music, crafts, treats and fun for all! So come dressed to impress and spend the evening with someone you love! Buy tickets for each person in your party; no walk-ins.

Location: community center

Registration deadline: February 6

AGES	TIME	COST
12 & under	6 – 7:30 pm	\$12 per ticket

Dive-in Movie

Friday, February 2

Join your friends and family at the Tropics Indoor Waterpark inside the Shoreview Community Center for Dive-In Movie nights! Guests can float with water noodles (not provided), relax on giant sea creatures, or lounge on pool-side chairs and enjoy a popular family friendly movie.

The whirlpool will be closed during and after the movie.

Tickets must be purchased by each individual attending. Pre-registration required.

No walk-ins accepted.

Movie: Minions The Rise of Gru

Location: community center pool

Registration deadline: January 30

TIME	COST
Event duration 5 – 8 pm Check-in starts at 5 pm Movie starts at 6:15 pm	\$15/ticket

Bamboo Bay Egg Hunt

Sunday, March 17

The bunny will be hiding eggs for you to find in the Bamboo Bay pool area! Each child will be given an east bag of goodies. After the egg hunt is completed participants will be able to swim in Bamboo Bay. Don't forget your swimsuit! No walk-ins accepted.

Location: community center — Bamboo Bay

Registration deadline: March 11

AGES	TIME	COST
7 & under	9 – 11 am	Adult: \$8, Child: \$12

Egg Hunt

Saturday, March 23

Join the bunny for an egg hunt! Each participant will be given a bag for hunting! The egg hunt will be held outside, so please dress for the weather. Tickets must be purchased for each individual participating in the egg hunt. No-walk ins accepted.

Location: McCullough Park

Registration deadline: March 19

Check-in: 10 am

AGES	TIME	COST
10 & under	10:30 am	\$12



SUMMER CAMP GUIDE & REGISTRATION

Plan ahead for summer 2024!

Summer-Camp Guide will be available
mid-January

Summer Discovery: Full-day 11-week summer camp
for kids entering Kindergarten – 6th grade. Held at
the Shoreview Community Center.

Adventure Quest: Half-day camps for kids
3 – 11 years old. Held outdoors at local parks.

Enrichment Camps:

- Art camps
- Musical Theater
- STEAM
- Sports camps

Registration begins at 8 am

Tuesday, February 6: Shoreview residents

Thursday, February 8: Annual members

Friday, February 9: General public

How to register:

- Online at shoreviewmn.gov
- In person at parks & rec (M – F, 8 am – 4:30 pm)
- Over the phone with credit card at 651-490-4750



Youth Programs



MUSIC TOGETHER

Sing, laugh, move and learn along with your baby, toddler or preschooler in these award-winning classes. The little ones love the delightful, engaging classes and the caregivers love helping their children grow into confident, life-long music makers. Infants under eight months on the first day of class attend free with a paid sibling. Participants receive a CD, a code to download the music using our free 'Hello Everybody' app, and illustrated songbook and parent education materials.

Try a free demo class to see if this program is a good fit for your family.

Infants under 8 months (born after January 26, 2023) attend at no cost with a paid sibling.

FREE DEMO CLASSES

Location: community center

Registration deadline: December 29

AGES	DATE & TIME	COST
0 – 5	Wed, Jan 3 9:15 – 10 am	Free
0 – 5	Sun, Jan 7, 4:30 – 5:15 pm	Free

MUSIC TOGETHER

Location: community center

Registration deadline: January 5

AGES	DATE & TIME	COST
0 – 5	Tues, Jan 9 – Mar 12 9:30 – 10:15 am	\$195; \$109 add'l sibling
0 – 5	Tues, Jan 9 – Mar 12 10:30 – 11:15 am	\$195; \$109 add'l sibling
0 – 5	Wed, Jan 10 – Mar 13 9:15 – 10 am	\$195; \$109 add'l sibling
0 – 5	Wed, Jan 10 – Mar 13 10:15 – 11 am	\$195; \$109 add'l sibling
0 – 5	Sun, Jan 14 – March 17 4:30 – 5:15 pm	\$195; \$109 add'l sibling
0 – 5	Sun, Jan 14 – March 17 5:30 – 6:15 pm	\$195; \$109 add'l sibling



WISH UPON A BALLET

Wish Upon a Ballet is a dance program for children that incorporates popular children's stories as well as ballet stories to create a dance class that is more than ballet steps. Come join the fun! Students will need ballet shoes and comfortable clothes they can move around in.

Location: community center — studio 3

Registration deadline: January 8

AGES	DATE & TIME	COST
3 – 6	Sun, Jan 14 – March 3 2 – 2:45 pm	\$117; \$100 SV Res

WISH UPON A BALLET & TAP:

This class includes the Wish Upon a Ballet curriculum with the added fun of tap! Proper terms for dance steps will be taught as well as body awareness to improve posture, strength and flexibility. Students will gain poise and confidence as they leap and spin! Ballet and tap shoes are required.

Location: community center — studio 3

Registration deadline: January 8

AGES	DATE & TIME	COST
4 – 7	Sun, Jan 14 – March 3 2:45 – 3:30 pm	\$117; \$100 SV Res

HIP HOP DANCE PARTY

This program is sure to keep students active! Learn upbeat styles such as jazz and hip hop and move to your favorite songs. The students will also learn warm-ups such as stretching, isolations and across the floor exercises! Dance shoes or indoor sneakers are preferred.

Location: community center — studio 3

Registration deadline: January 8

AGES	DATE & TIME	COST
5 – 10	Sun, Jan 14 – March 3 3:30 – 4:15 pm	\$117; \$100 SV Res





ALADDIN MUSICAL THEATER CLASS

A Whole New World! Learn lines, songs and dances from Aladdin and put together our own musical! Everyone will learn how to put together a professional show from start to finish. Learn how to properly speak your lines, block a scene, develop your character and much more! We will also play fun creative games! All that is needed are comfortable clothing and lightweight sneakers or dance shoes. Friends and family are invited to a special performance beginning the final 30 minutes of the final class.

Location: community center

Registration deadline: January 8

AGES	DATE & TIME	COST
4 – 8	Saturdays, Jan 13 – March 2 1:30 – 2:30 pm	\$117; \$100 SV Res

HIGH SCHOOL MUSICAL 2 MUSICAL THEATER CLASS

Grab your towels and sunglasses and let's hit the pool! Learn lines, songs and dances from High School Musical 2 and put on a show! Everyone will learn how to put together a professional show from start to finish. Learn how to properly speak your lines, block a scene, develop your character and much more! We will also play fun creative games! All that is needed are comfortable clothing and lightweight sneakers or dance shoes. Friends and family are invited to a special performance beginning the final 30 minutes of the final class.

Location: community center

Registration deadline: January 8

AGES	DATE & TIME	COST
7 – 12	Saturdays, Jan 13 – March 2 2:30 – 3:30 pm	\$117; \$100 SV Res



Youth Programs



ELEMENTARY SPANISH

Come learn Spanish with Language Sprout. This elementary-focused, immersive program will get your child speaking fast. Our classes combine theme based and grammar lessons with hands-on learning to meet your child at their right level. Class includes a parent portal for continued learning at home.

Location: community center

Registration deadline: January 2

AGES	DATE & TIME	COST
6 – 12	Sat, Jan 6 – March 9 9:30 – 10:15 am	\$225; \$205 SV Res

YOUNG LEARNERS SPANISH

Come sing, dance and play as we learn Spanish! Our young learners program blends real world play with language immersion to have your child on a fast track to bilingualism. Join us as we learn colors, shapes, numbers, feelings, pets, vegetables and more in this uniquely fun language program.

This is a parent/child class. An adult must participate with child.

Location: community center

Registration deadline: January 2

AGES	DATE & TIME	COST
2 – 5	Sat, Jan 6 – March 9 10:30 – 11:15 am	\$225; \$205 SV Res

BABYSITTING 101

This class will cover:

- First Aid
- Sitter Safety
- Crafts, toys & childproofing
- Nutrition

Location: community center – city hall side

Registration deadline: one week before class

AGES	DATE & TIME	COST
10 – 13	Sat, Jan 20, 8 am – noon	\$73; \$67 SV Res
10 – 13	Sat, Feb 24, 8 am – noon	\$73; \$67 SV Res



BABYSITTING FIRST AID

Students interested in continuing their babysitting skills will learn about:

- Recognizing an emergency
- When to call for help
- Care for injuries and allergic reactions
- How to help a choking child/infant
- Students will also put together a small first aid kit

Location: community center—city hall side

Registration deadline: one week before class

AGES	DATE & TIME	COST
10 – 13	Sat, Feb 3, 8 – 11 am	\$50

CHESS SCHOOL

Chess teaches

- math concepts
- how to strategize
- spatial and critical thinking
- focused concentration
- memory building skills

Open to ALL level of players. The professional coaches divide the room by abilities. Beginners learn basic game rules and opening tactic moves. Intermediate and advanced players learn sophisticated combinations and strategies and advanced opening moves. Best of all — CHESS IS FUN!

Location: community center

Registration deadline: one week before class

AGES	DATE & TIME	COST
5 – 15	Full session: Saturdays Jan 6 – Mar 23, 10 – 11:15 am	\$198; \$180 SV Res
5 – 15	Session 1: Saturdays Jan 6 – Feb 10, 10 – 11:15 am	\$106; \$96 SV Res
5 – 15	Session 2 : Saturdays, Feb 2 – Mar 23 , 10 – 11:15 am	\$106; \$96 SV Res



COLOR ME HAPPY WITH KIDCREATE STUDIO

Let's color your child's world with happiness! This exploratory art class will build your young artist's self-esteem as they gain new skills, make new friends, and create adorable, colorful masterpieces. We'll create 3D creations and get messy with finger paint; we'll even use a special spin-art technique to make the cutest, most colorful artwork ever seen. After taking this class, the art table will definitely become your child's happy place. Get ready to roll up your sleeves and color yourself happy! Children must be accompanied by a caregiver.

Location: community center

Registration deadline: January 11

AGES	DATE & TIME	COST
18 months – 6 years	Sat, Jan 20 – Feb 10 9:30 – 10:30 am	\$81; \$74 SV Res



FAIRY GARDEN WITH KIDCREATE STUDIO



I do believe in fairies, I do! We'll use clay, paint, and more as we sculpt our very own enchanted fairy gardens. These adorable little fairy retreats will have sparkling streams, colorful flowers, a fairy swing, and more! You don't want to miss this magical class. Please pack a nut free snack and drink for your child.

Location: community center

Registration deadline: February 15

AGES	DATE & TIME	COST
4 – 9	Sat, Feb 24 9 am – noon	\$52; \$47 SV Res

Youth Programs



GLOW ART WITH KIDCREATE STUDIO

These art projects will light up your child's world long after the lights go out at night. You guessed it, all the projects your child creates will glow-in-the-dark! We will work with a variety of art supplies, including clay, paint, and many luminescent materials, to create masterpieces your child will be excited to show off in the dark! Please pack a nut free snack and drink for your child each day.



Location: community center

Registration deadline: March 4

AGES	DATE & TIME	COST
3 – 6	Tues - Thurs, Mar 12 – 14 9 am – noon	\$88; \$82 SV Res

PAINT WITH ME!

Grab your favorite adult for a fun morning of painting with Paint by Jill. A young person along with their special adult will create a painting together on one canvas. Registration covers one child and their adult. Additional children require an additional registration.

See page 28 for adult painting programs.

Location: community center

Registration deadline: one week before class

AGES	DATE	TIME	CLASS	COST
Child 5+ Adult 18+	Sat, Jan 20	10 am – noon	It's a chill thing	\$40; \$36 SV Res
Child 5+ Adult 18+	Sat, Feb 3	10 am – noon	Calling all hearts	\$40; \$36 SV Res
Child 5+ Adult 18+	Sat, Mar 9	10 am – noon	Easter me	\$40; \$36 SV Res
Child 5+ Adult 18+	Sat, Apr 6	10 am – noon	Wagon of fun	\$40; \$36 SV Res



Youth Sports



LIL NINJAS

Lil' Ninjas is specifically designed to enhance your child's development in a fun and motivating way. Class focuses on improving basic listening, social, and motor skills. Our instructors work on focus, team work, control, balance, memory, discipline, fitness, coordination, and respect.

Class is limited to 8 students. Sun Yi Academy uniforms are required. Uniforms can be purchased for an additional fee (cash or check) with the instructor the first night of class.

Location: community center—studio 3

Registration deadline: January 2

No class dates: March 13 & 14

AGE	CLASS	DATE & TIME	COST
4 – 6	Advanced rank*	Wednesdays Jan 3 – March 27 5:15 – 5:45 pm	\$120; \$108 SV Res
4 – 6	Low rank	Wednesdays, Jan 3 – March 27 5:45 – 6:15 pm	\$120; \$108 SV Res
4 – 6	Low rank	Thursdays, Jan 4 – March 28 5:15 – 5:45 pm	\$120; \$108 SV Res
4 – 6	Low rank	Thursdays, Jan 4 – March 28 5:45 – 6:15 pm	\$120; \$108 SV Res

* must be yellow belt or higher

INTRODUCTION TO TAE KWON DO

This class is for students new to Sun Yi's Academy of Tae Kwon Do. Students will learn the fundamental skills of Tae Kwon Do. No uniform is needed for this class. Wear comfortable clothing.

Location: community center — studio 3

Registration deadline: January 2

No class dates: March 12

AGE	DATE & TIME	COST
7+	Tuesdays, Jan 2 – March 26 5:30 – 6:15 pm	\$120; \$108 SV Res



TAE KWON DO

New students must take Introduction to Tae Kwon Do before taking a ranked class.

Tae Kwon Do is unlike other martial arts programs, incorporating physical and mental elements into each class. Classes teach kicking, punching, striking, and blocking techniques through traditional Tae Kwon Do. Students will improve stamina, strength, speed, agility, coordination, balance, reflexes, concentration and confidence.

If your child has taken Tae Kwon Do at another location, please email Pam at pmeyerstkd@gmail.com to verify their rank before you sign them up for class.

BELT	RANK
White through green	Low
Blue and above	High

Location: community center — studio 3

Registration deadline: January 2

Pre-requisite: Introduction to Tae Kwon Do

No class dates: March 12 & 14

AGE	RANK	DATE & TIME	COST
7+	Low	Tues & Thurs, Jan 2 – March 28 6:15 – 7:15 pm	\$240; \$216 SV Res
7+	High	Tues & Thurs, Jan 2 – March 28 7:15 – 8:15 pm	\$240; \$216 SV Res



TUMBLING

Discover the sport of tumbling in a positive, educational atmosphere. Participants will learn basic skills on floor, balance beam, bars, and vault. Due to space limitations there is no observation area for parents; parents are invited to observe the final class.

Location: community center

Registration deadline: December 30

AGE	CLASS	DATE & TIME	COST
2 – 3	Toddler & Parent*	Saturdays, Jan 6 – Feb 10 9:45 – 10:30 am	\$103; \$93 SV Res
3 - 5	Beginner	Saturdays, Jan 6 – Feb 10 10:45 am – 11:30 pm	\$103; \$93 SV Res
5 – 7	Intermediate	Saturdays, Jan 6 – Feb 10 11:45 am – 12:30 pm	\$103; \$93 SV Res

*One parent/guardian must attend class with child

GIRLS VOLLEYBALL SKILLS

Participants will develop skills and learn the rules of volleyball in a team setting.

Location: Mounds View Community Center

Registration deadline: January 16

GRADE	DATE & TIME	COST
4 – 5	Tues, Jan 23 – Feb 27 6 – 7 pm	\$65
6 – 8	Tues, Jan 23 – Feb 27 7 – 8 pm	\$65
4 – 5	Tues, Mar 26 – Apr 30 6 – 7 pm	\$65
6 – 8	Tues, Mar 26 – Apr 30 7 – 8 pm	\$65



AFTER-SCHOOL SPORTS & GAMES

Instructors provide the opportunity for participants to try new gym games and sports each week! Sports include basketball, soccer, kickball, and more. .

Location: Island Lake Elementary

Registration deadline: January 5

No Class Date: January 25

GRADE	DATE & TIME	COST
1 – 5	Tues & Thurs, Jan 9 – Feb 15 4:05 – 5:05 pm	\$112

TGA GOLF

TGA Golf brings the golf course to your student, making it easy to learn and play golf in a fun and safe environment. Instructors help students develop golf skills and knowledge, while teaching valuable life lessons like honesty and sportsmanship.

Location: Island Lake Elementary

Registration deadline: January 5

No Class Date: February 19

GRADE	DATE & TIME	COST
1 – 5	Monday, Jan 22 – Mar 4 4:05 – 5:05 pm	\$165



Youth Sports



REVSports BASKETBALL

Come and enjoy the fun filled camps that RevSports has to offer! Each camp will provide instruction, games, and fun! All equipment is provided.

Location: community center

Registration deadline: Friday before class

AGES	DATE	TIME	COST
3 – 4	Mondays, Jan 22 – Feb 12	5 – 5:25 pm	\$84; \$77 SV Res
4 – 6	Mondays, Jan 22 – Feb 12	5:30 – 6:10 pm	\$84; \$77 SV Res
4 – 6	Mondays, Jan 22 – Feb 12	6:15 – 6:55 pm	\$84; \$77 SV Res
6 – 8	Mondays, Jan 22 – Feb 12	7 – 7:40 pm	\$84; \$77 SV Res
3 – 4	Mondays, March 4 – Apr 1	5 – 5:25 pm	\$84; \$77 SV Res
4 – 6	Mondays, March 4 – Apr 1	5:30 – 6:10 pm	\$84; \$77 SV Res
4 – 6	Mondays, March 4 – Apr 1	6:15 – 6:55 pm	\$84; \$77 SV Res
6 – 8	Mondays, March 4 – Apr 1	7 – 7:40 pm	\$84; \$77 SV Res



MINI KICKERS

This program teaches fundamental skills of soccer. Small group sizes provide a fun and active environment. Age appropriate equipment is used.

Location: community center

Registration deadline: January 13

AGES	DATE & TIME	COST
3 – 5	Saturdays, Jan 20 – Feb 24 9 – 9:30 am	\$85, \$78 SV Res
3 – 5	Saturdays, Jan 20 – Feb 24 9:35 – 10:05 am	\$85, \$78 SV Res
3 – 5	Saturday, Jan 20 – Feb 24 10:10 – 10:40 am	\$85, \$78 SV Res



ICE SKATING INSTRUCTION: GROUP LESSONS

PRE-SNOWPLOW | AGES 4 – 8

With a mix of fun games and drills, this class will help participants gain the strength and confidence to stand on their own while introducing preliminary skating moves and techniques.

SNOWPLOW SAM | AGES 4 – 10

Participants will learn to skate in a safe and fun environment. This class introduces preliminary moves that will help develop the familiarity, coordination and strength needed to maneuver on skates.

LEVELS 1 – 3 | AGES 6+

Our leveled classes encourage participants to trade in hesitation for excitement as their confidence grows with each stride. Participants will focus on skills that build their agility, balance, coordination and speed.

Winter 2023 schedule: Saturday, January 6 – February 17

Location: The Shoreview Arena, Hwy 96 & Victoria St.

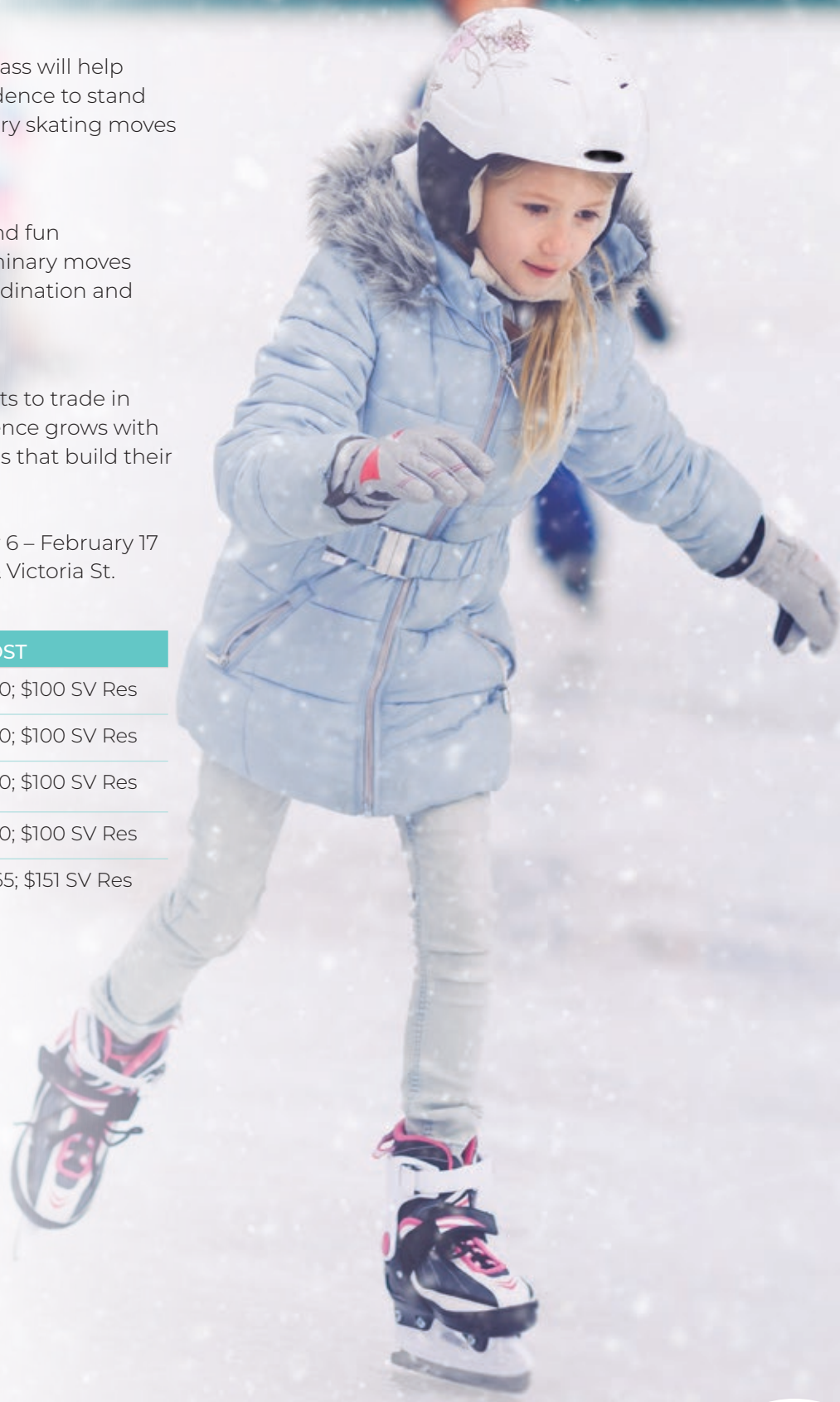
Registration deadline: December 30

CLASS	TIME	COST
Snowplow	8 – 8:30 am	\$110; \$100 SV Res
Level 1	8 – 8:30 am	\$110; \$100 SV Res
Snowplow	8:35 – 9:05 am	\$110; \$100 SV Res
Level 1	8:35 – 9:05 am	\$110; \$100 SV Res
Pre-Snowplow	9:10 – 9:40 am	\$165; \$151 SV Res

Helpful tips for skaters:

Lace skates more snugly in the middle of the shoe than at the top or bottom for best support. Skates should fit correctly — don't use skates that are too big. Keep the blades sharp. Wear one pair of light weight wool or synthetic socks. Cotton socks are not suitable for skating. If a child does not meet the basic requirements of the level registered for, the instructor will adjust the child's level.

Helmets and skates: for safety, all participants are required to wear helmets. Bike helmets are acceptable. Helmets and skate rental are NOT available at the rink.



Youth Sports



RINKS

Shoreview has seven outdoor skating rinks with staffed warming houses. All of the locations below have lighted hockey* and general skating rinks (*hockey rink not available at Commons Park)

PUBLIC SKATING

DECEMBER 26 – FEBRUARY 24

(depending on weather and ice conditions)

Bobby Theisen Park	375 Vivian St
Bucher Park	5900 Mackubin St
Commons Park Skating Pond 4580	580 Victoria St N (no hockey)
McCullough Park	955 County Rd I
Sitzer Park	4344 Hodgson Rd
Shamrock Park	5623 Snelling Ave
Wilson Park	815 County Rd F

WARMING HOUSE HOURS

DECEMBER 26 – FEBRUARY 24

Monday – Friday	4:30 – 8:30 pm
Saturday	noon – 8 pm
Sunday	noon – 6 pm
District 621 school's out days	noon – 9 pm
New Year's Eve	noon – 6 pm
New Year's Day	noon – 9 pm

It takes 7 – 10 consecutive days of below-freezing temperatures to make a safe ice surface.

Warming houses will be closed when it is in the best interest and safety of the community.

Warming houses will be closed if:

- warm temps have softened the ice
- temps are below – 10 degrees
- wind-chills are below – 20 degrees
- we have substantial snowfall

WEATHER UPDATES

Call the weather line at **651-490-4765** for updates

TRAILS FOR CROSS COUNTRY SKIING

Ramsey County Parks & Recreation offers marked and groomed cross-country ski trails at county parks. All trails are open daily from sunrise to sunset. Trail maps and grooming patterns for each park are available; please visit ramseycounty.us





SNOWSHOE RENTALS

Snowshoes can be rented by calling **651-490-4753** or email ljarosz@shoreviewmn.gov. Please call or email at least two business days before your desired rental date. Payment will be due when you come to pick up your snowshoes.

When reserving, please give a pick-up time so staff can prepare equipment before your arrival. Items can be picked up and dropped off at the parks and recreation desk at the Shoreview Community Center.

RENTAL	COST	PICKUP/DROP-OFF TIME
Mon – Fri	Adults: \$25 Youth: \$10	Mon – Fri 8:30 am – 4pm
Weekend	Adults: \$15 Youth: \$10	Friday before your rental 8:30 am – 4pm

SNOWSHOE SIZE	# AVAILABLE	MAX. WEIGHT
20 inch (youth)	4	80 lbs
22 inch	4	160 lbs
24 inch	4	200 lbs
XL	4	220+lbs

For more information, visit shoreviewmn.gov/parks-rec





JOIN OUR TEAM

**Part-time, flexible hours,
free community center membership**

CHILD CARE ATTENDANT

\$11.50-15/hour

Provide care for children 6 months to 8 years in our drop-off center. Exp. with preschoolers preferred.

GROUP FITNESS INSTRUCTOR

\$20-27/hour

Seeking certified instructors to teach cardio and strength classes.

GUEST SERVICES/MEMBERSHIPS

\$14-18/hour

Answer questions, give tours, room set-up, address guest issues, provide backup at desk and café.

GYM SUPERVISOR

\$12-17/hour

Supervise adult drop-in pickleball and other activities, set-up equipment, ensure guests have signed in and paid.

GYMNASTICS/TUMBLING INSTRUCTOR

\$12-15/hour

Teach beginning to intermediate level gymnastics to kids ages 3 through 8. No experience required.

ICE SKATING INSTRUCTOR

\$12-16/hour October - February

Instruct youth in ice skating. Skating knowledge & experience required. 2-4 hours Saturday mornings.

LIFEGUARD (WE WILL TRAIN)

\$13-15/hour
(Up to \$20/hr for certain shifts)

No experience required. Training is provided through Ellis Certification. Must be at least 15 years old.

MANAGER ON DUTY

\$18-24/hour

Coordinate daily activities, supervise staff, assist guests, follow safety/security procedures.

MANAGER ON DUTY - EVENING EVENTS

\$18-24/hour

Assist guests, complete room set-ups, follow safety/security procedures.

Limited Friday & Saturday evenings depending on facility rentals.

PERSONAL TRAINER

\$20-27/hour

Nationally-certified trainers provide personalized workouts for general fitness & sport-specific conditioning.

POOL COORDINATOR

\$16.50-18.50/hour

Coordinate activities/operations, supervise/train staff, schedule shifts, carry out policies, maintain systems.

PRESCHOOL ASSISTANT

\$13-17/hour September-May

Assist the teacher with preschool recreation classes. Experience working with preschoolers preferred.

SERVICE DESK

\$12.50-17/hour

Help guests on the phone and in-person, operate cash register, log membership information, assist cafe staff.

SPECIAL EVENTS STAFF

\$11.50-15/hour

Help host our Egg Hunt, Kids Garage Sale, Halloween Hoopla, etc. Duties include decorating & clean up.

SWIMMING INSTRUCTOR (WE WILL TRAIN)

\$14-17/hour

No experience required, training provided. Morning/early evening classes held at the community center.

SWIMMING INSTRUCTOR - PRIVATE LESSONS

\$27-28/hour

No experience required, training provided. Morning/early evening classes held at the community center.

WAVE CAFE ATTENDANT

\$11.50-15/hour

Prepare food, operate cash register, maintain a clean work area and lobby/tables, stock supplies.

Open until filled! For a list of current job opportunities, visit shoreviewmn.gov/jobs

We are an equal opportunity employer.





		Acres	Ballfields	Basketball Court	Football	Skating Rink	Paths	Pickleball	Tennis	Picnic Area	Playground	Shelter	Soccer	Circuit Training
Bobby Theisen Park	3575 Vivian Avenue	15		1	√	√	√	6	2			1	√	
Bucher Park	5900 Mackubin Street	25	2	1	√	√	√		2	√	√	1	√	√
Heritage Park	1170 Lepak Court	3												
Lake Judy Park	900 Tiller Lane	5		½			√			√	√			
McCullough Park	955 County Rd I	75	2	1	√	√	√		2	√	√	1	√	
Ponds Park	190 Sherwood Road	1					√			√	√			
Rice Creek Fields	5880 Rice Creek Pkwy	10	4				√			√	√			
Shamrock Park	5623 Snelling Avenue	23	2	1	√	√	√		2	√	√	1	√	
Shoreview Commons	4580 North Victoria	40		1	√	√	√	2	2	√	√	1	√	
Sitzer Park	4344 Hodgson Road	8	2	1		√	√		2	√	√	1		
Wilson Park	815 County Road F	13	2	1		√	√			√	√			

The following are operated by Ramsey County Parks & Recreation.

651-266-0300

ramseycounty.us/parks

		Acres	Boat Ramp	X-Country Skiing	Fishing	Hiking Trails	Hockey Rink	Golf Course	Paths	Picnic Area	Playground	Shelter	Swimming
Island Lake Cty Park	3611 Victoria Street	167	√		√			√	√	√	√	√	
Lake Owasso Cty Park	370 N. Owasso Blvd.	9	√		√				√	√	√	√	√
Shoreview Ice Arena	877 Highway 96						√						
Snail Lake Regional Park	580 Lake Blvd.	400	√	√	√	√			√	√	√	√	√
Turtle Lake Cty Park	4979 Hodgson Road	9	√		√					√	√	√	√

For indoor pickleball and swimming visit the Shoreview Community Center.





City of Shoreview
4600 Victoria Street North
Shoreview MN 55126

Presorted Standard
U.S. POSTAGE
PAID
TWIN CITIES, MN
PERMIT NO. 5606

*****ECRWSS*****
Postal Customer

December Membership Special

\$40 one month
membership
(per/person, includes tax)

November 27 - December 31

- membership starts the day you sign up
- only able to purchase one month

Ends December 31 at 4 pm

