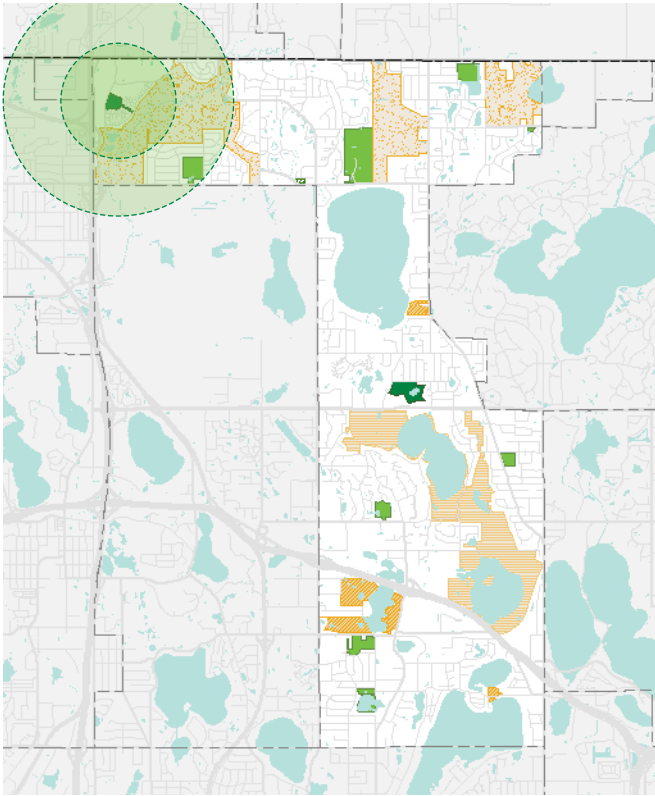


Rice Creek Park *Existing conditions*



Address	5880 Rice Creek Parkway
Date established	2000
Acreage	10
Classification	Neighborhood park
Convenience amenities	  
Athletic amenities	
Winter amenities	
Informal summer amenities	
Picnic + play amenities	 

Park overview

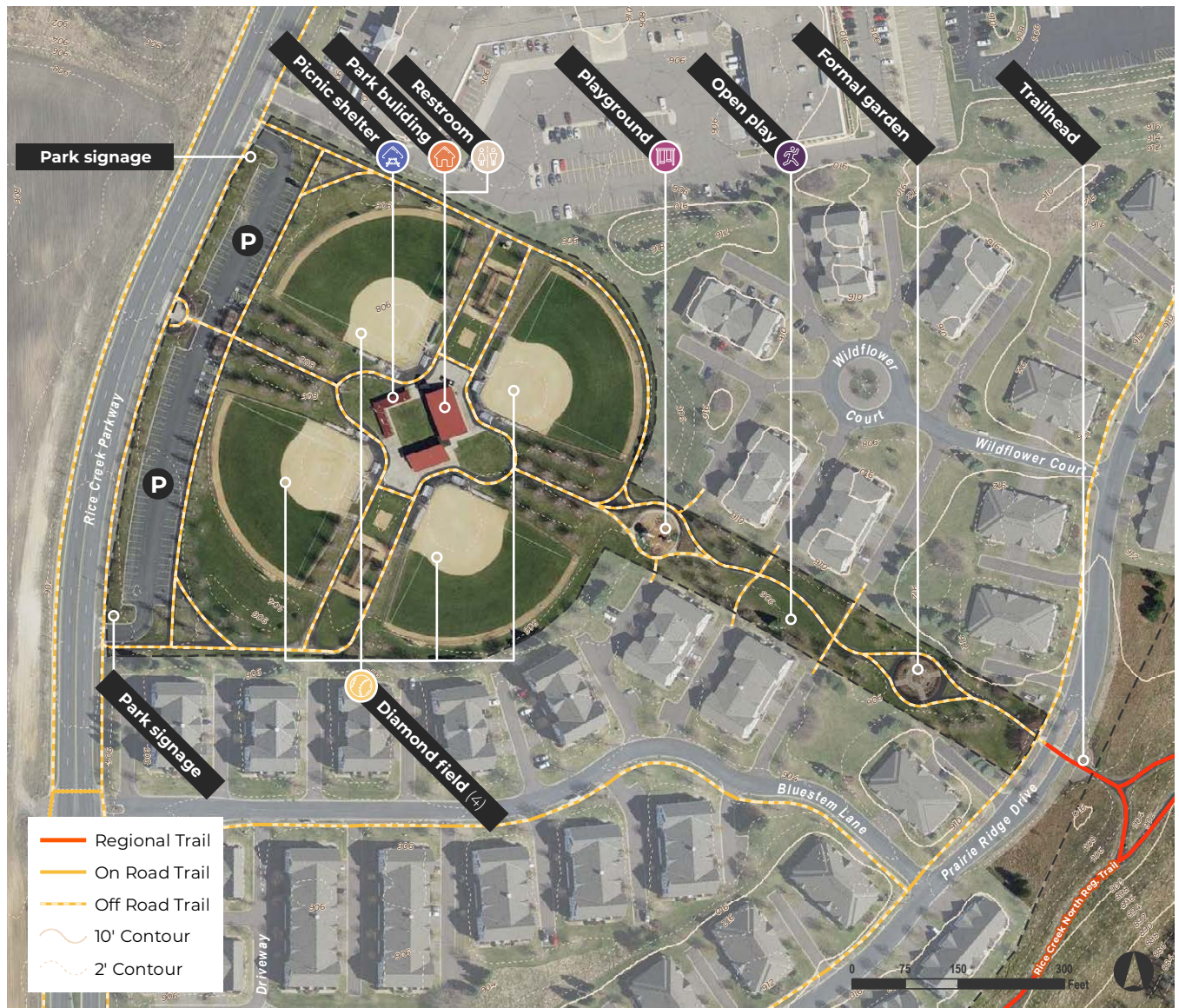
- Initially developed in 2000, with scoreboards and building added in 2001 when diamond fields first opened for use
- First park in Shoreview’s System to be entirely irrigated
- Scoreboards were replaced in 2018
- Playground was replaced in 2020
- Internal park trails connect to the Ramsey Rice Creek Regional Trail System to the south east

- Parking is pinched, particularly during tournament events
- None of the diamond fields are lit
- Athletic associations contribute to maintenance and upkeep of fields
- Indoor restrooms are available but require updating – part of the 2020 budget
- Formal garden area is hard to maintain and does not see heavy usage
- Dumpster enclosure needed

Observations

- Heavily used for tournaments – 6 to 8 weekends a year – including the occasional national tournament

Figure 4.14 Rice Creek Fields existing conditions



PARK CONCEPTS









Rice Creek Park *Proposed concept*



Exercise equipment node (photo from aspace.com)



Spectator shade structure (photo from Shade Systems)

Address	5880 Rice Creek Parkway
Date established	2000
Acreage	10
Classification	Neighborhood park
Convenience amenities	  
Athletic amenities	
Winter amenities	
Informal summer amenities	
Picnic + play amenities	 

Concept components

- The existing buildings will be renovated, focusing on low-maintenance strategies.
- Shade for spectators will be added to the diamond fields.
- The parking lot will have a minor modification to add about ten parking stalls and a dumpster enclosure.
- The trail loop will be completed around the southeast field.
- Difficult-to-maintain garden areas will be replaced with a picnic lawn and a node for adult exercise equipment.

Figure 4.15 Rice Creek Fields proposed concept



Key

- | | | | |
|--|--------------------------------|----------------------------------|------------------------------------|
| Existing trails | A Updated park building | C Flexible open lawn | E Additional parking stalls |
| Proposed trails | B Shade for spectators | D Exercise equipment node | F Dumpsture enclosure |