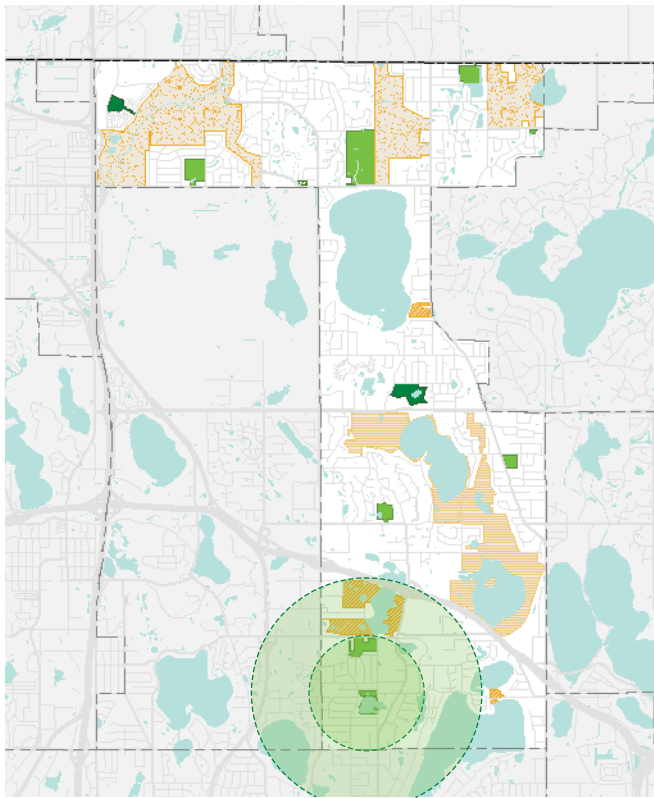







Lake Judy Park *Existing conditions*



Address	900 Arbogast Street
Date established	1975
Acreage	5
Classification	Neighborhood park
Convenience amenities	
Athletic amenities	
Winter amenities	
Informal summer amenities	
Picnic + play amenities	  

Park overview

- The city's first water tower was sited here, and removed in the early 1990's
- One of the city's first parks – established in 1975 and contained a playground and open space
- In 1990 the picnic shelter was added
- In 2002 the playground was updated/replaced
- In 2007 the half court basketball was added

- The city owns an easement around the entire lake, which was established after a weather event to complete clean up needs

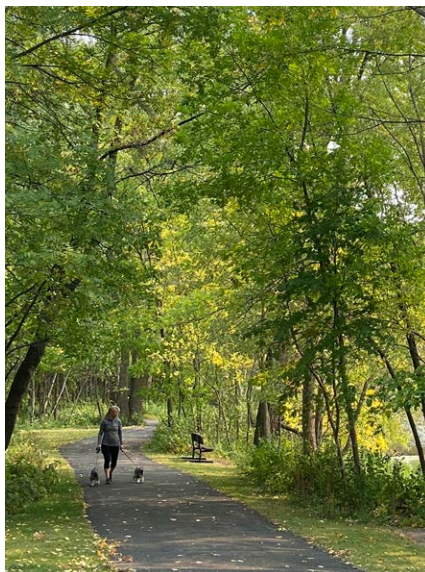
Observations

- Half basketball could be transitioned to full court

Figure 4.8 Lake Judy Park existing conditions



PARK CONCEPTS



Lake Judy Park *Proposed concept*



Biking skills course (photo from Pedal Adventures)



Informal water access point (photo from National Park Service)



Prefabricated restroom (photo from Easi-Set Buildings)

“ Would be nice to kayak, paddleboard if possible

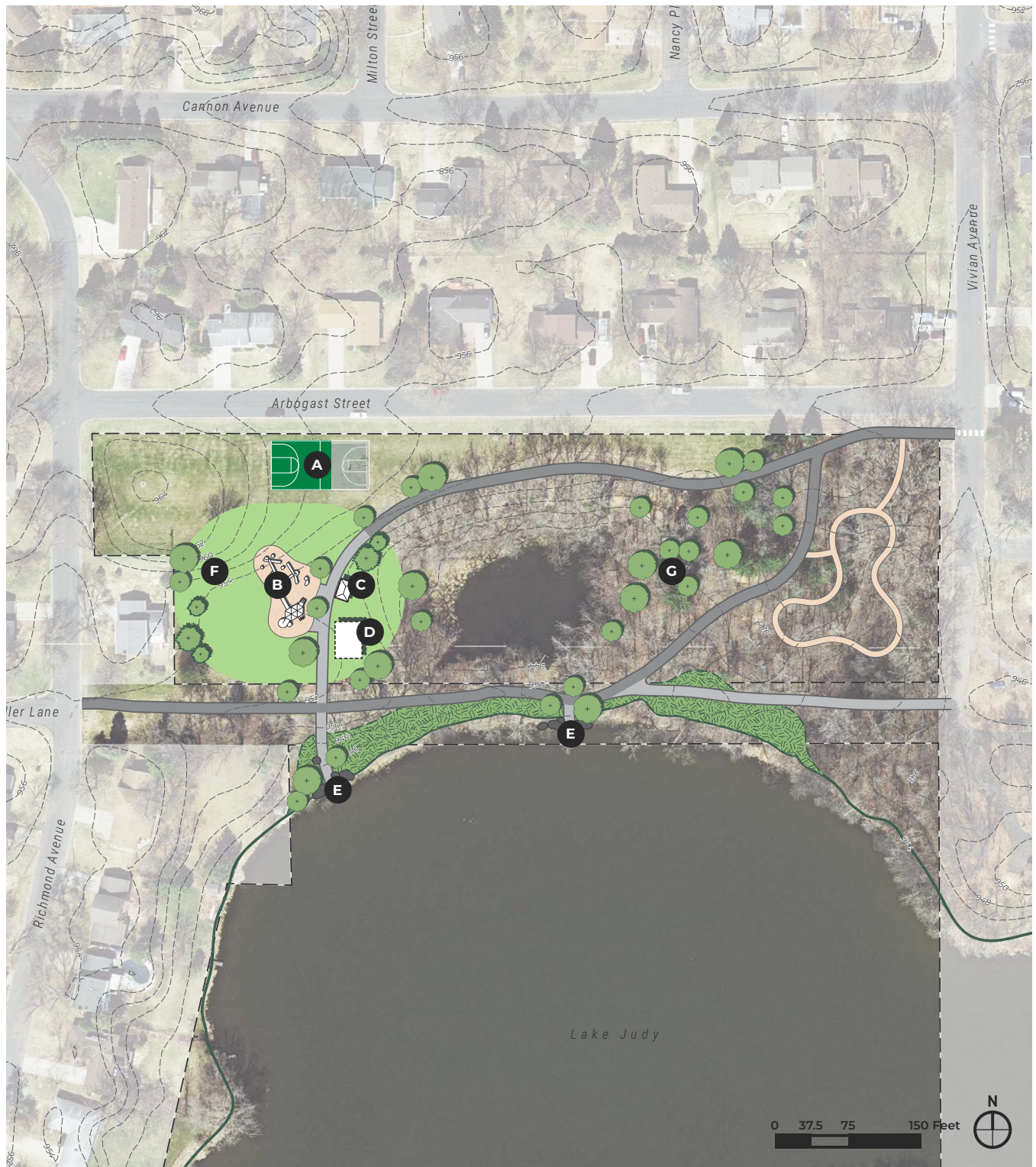
“ [Biking skills course] would be fun. Love encouraging kids to get out and ride their bikes.

Address	900 Arbogast Street
Date established	1975
Acreage	5
Classification	Neighborhood park
Convenience amenities	
Athletic amenities	
Winter amenities	
Informal summer amenities	
Picnic + play amenities	

Concept components

- A new picnic shelter and prefabricated restroom building, linked by a realigned trail connection, provide a revitalized space for gathering at the bottom of the hill.
- A new playground could have a water-tower theme, based on the history of the park.
- Sledding on the hill remains in place, to the west of the playground.
- The full-size basketball court will meet a gap in this facility type.
- A small, single-track training course invites younger off-road bikers to try the sport.
- New trail loops, connections, and informal water access invite people to explore the whole park.

Figure 4.9 Lake Judy Park proposed concept



Key

- | | | | |
|------------------------|---|----------------------------------|--|
| ■ Existing trails | ● Stormwater bmp/native plant restoration | ● B Relocated/updated playground | ● E Informal water access (ADA accessible) |
| ■ Proposed trails | ● A Full-court basketball | ● C Prefab restroom building | ● F Sledding hill |
| ■ Biking skills course | ● D Picnic shelter | ● G Woodland restoration | |