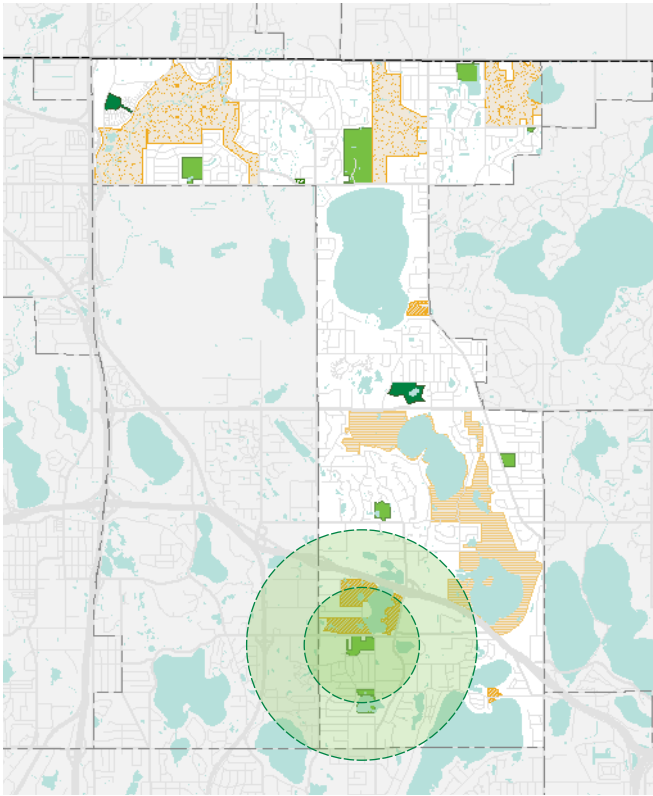


Bobby Theisen Park *Existing conditions*



Address	3575 Vivian Street
Date established	1983
Acreage	15
Classification	Neighborhood park
Convenience amenities	
Athletic amenities	
Winter amenities	
Informal summer amenities	
Picnic + play amenities	

Park overview

- Originally named after a young, blind boy from the neighborhood
- The original development in 1983 was a full-sized rectangular field and just two hard courts, a park building, and a paved parking lot
- In 1984 the hockey and pleasure rinks were added
- In 1990 the tennis courts increased from two to four
- In 2014 two tennis courts were converted to six dedicated pickleball courts

Observations

- Neighboring school offers a playground for Elementary-level children
- Opportunity to connect north to new trail along County Road E
- East-west trails would better accommodate vehicles if they were wider and straighter
- Hill east of Rectangular field could be planted to reduce mowing concerns

Figure 4.1 Bobby Theisen Park existing conditions



Bobby Theisen Park *Proposed concept*

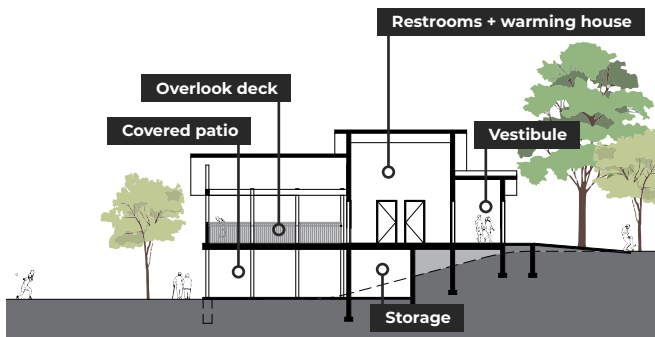


Figure 4.2 Bobby Theisen Park building example section

















Wetland boardwalk (photo of Blaine Wetland Sanctuary by minnesotaseasons.com)



Pickleball with fence-mounted noise mitigation (photo of Poinsettia Community park by acoustiblok.com)

“ We need more pickleball courts to meet the needs of the increasing numbers who play.

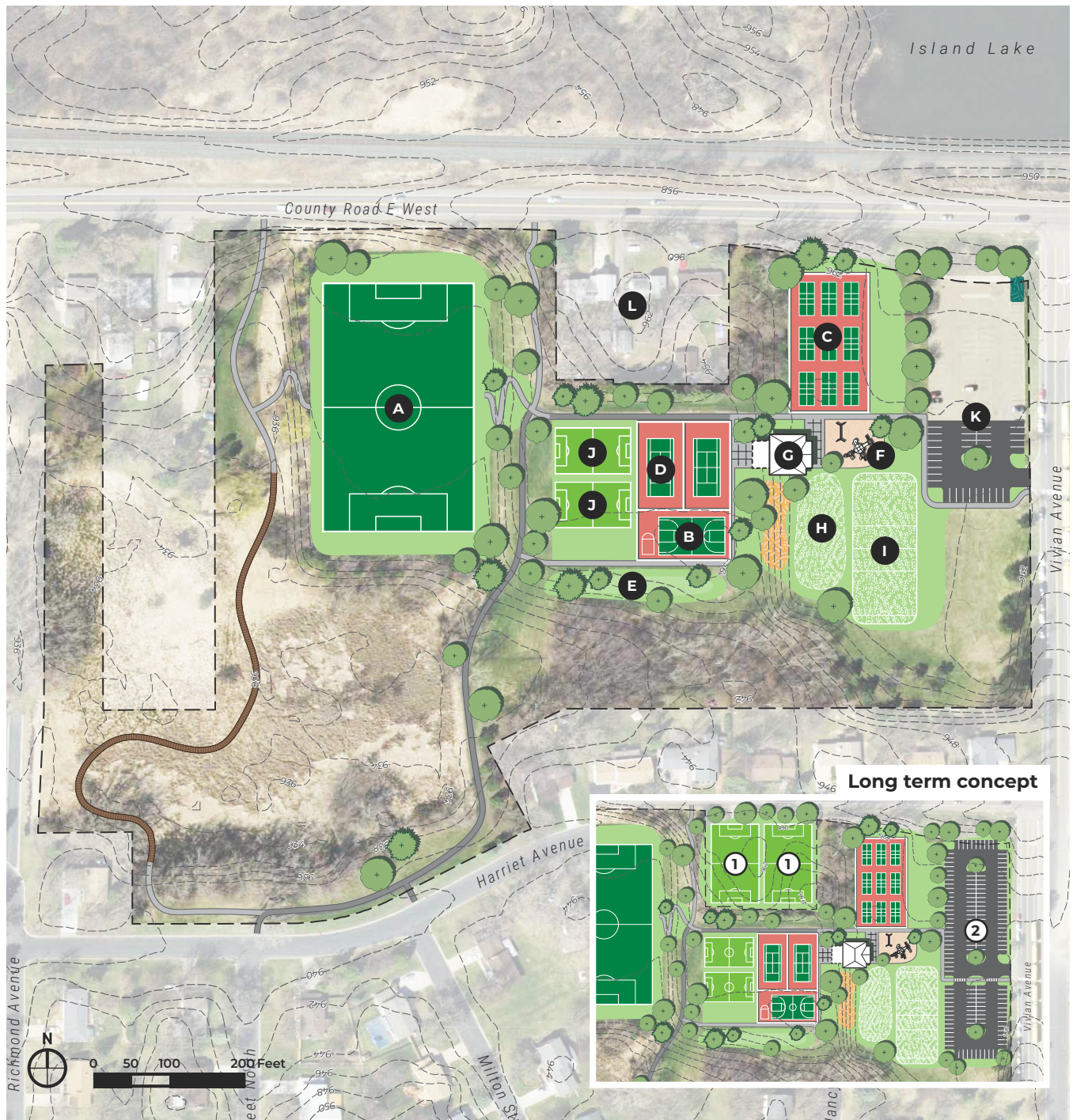
“ Yes to a boardwalk trail!

Address	3575 Vivian Street
Date established	1983
Acreage	15
Classification	Neighborhood park
Convenience amenities	  
Athletic amenities	
Winter amenities	  
Informal summer amenities	   
Picnic + play amenities	  

Concept components

- A new building will be both a warming house for skating areas on the upper level and a picnic shelter for the lower level.
- A small playground aimed at younger children will be located near the courts.
- Reorganized hardcourt area will maintain current number of tennis and basketball courts, consolidate the 8 existing pickleball courts and add one (*creating nine total*), and incorporate noise mitigation mounted on fencing.
- An artificial turf field will extend the season and help store stormwater in its sand layer.
- Reorganized parking lot to increase efficiency and capacity.
- Parcels within the park could be acquired over time and the Long Term Concept represents an option for how they are developed.

Figure 4.3 Bobby Theisen Park proposed concept



Key

- Existing trails
- Proposed trails
- Proposed boardwalk
- Pollinator plantings
- Existing rain garden
- A** Artificial turf full-sized rectangular field
- B** Relocated full & half court basketball
- C** Expanded pickleball with sound mitigation
- D** Relocated tennis court
- E** Berm for noise mitigation
- F** Playground
- G** Park building with restrooms, warming house, & attached shelter
- H** General skating rink
- I** Hockey rink & seasonal dog park
- J** Mini rectangular field
- K** Reorganized parking lot (30 additional spaces, 105 total)
- L** Future park acquisition & development
- 1** Medium rectangular field
- 2** Reorganized & expanded parking lot (55 additional spaces, 160 total - existing rain garden to be relocated)