

# SHOREVIEWS



## SPRING 2022

### City News and Recreation Catalog

City news	4
Resident resources	7
Community center	14
Recreation programs	22





## In this Issue

City news	4
Resident resources	7
Registration information	13
Community center	14
Event rentals	17
Group fitness	22
Adult sports	28
Adult programs	29
Aquatics	35
Kids Corner Preschool	40
Youth programs	42
Youth sports	47
Jobs	53
Calendar of events	54
Recreation areas	55

## Events at a Glance



### EQC speakers series

**Feb 16 - 7 pm**

Reducing Home Energy Use

**March 16 - 7 pm**

MPCA Get the lead out

**April 20 -7 pm**

Minnesota Mosquitoes: What's bugging you?

**May 18 - 7 pm**

Selecting lawn equipment to improve air quality





## Bamboo Bay Egg Hunt

SUNDAY

# April 3

9 - 11 AM

## Egg Hunt

SATURDAY

# April 9

10 AM

SHOREVIEW COMMONS



## Spring Royal Tea

THURSDAY

# May 15

3 - 4:30 PM

SHOREVIEW COMMUNITY CENTER

## Contact Us

City Hall	651-490-4600
Community Center	651-490-4700
Parks and Recreation	651-490-4750

Building Permits	651-490-4683
Code Enforcement	651-490-4669
Forestry	651-490-4650
Human Resources	651-490-4619
Planning and Zoning	651-490-4680
Recycling	651-490-4665
Sewer & Water	651-490-4661
Streets	651-490-4671
Utility Billing	651-490-4630

### POLICE & ANIMAL CONTROL

Police protection and animal control are provided by Ramsey County Sheriff's Office.

For non-emergencies	651-767-0640
For emergencies	911

### FIRE

Fire protection is provided by the Lake Johanna Fire Department.

For emergencies	911 Dispatch
Non-emergency	651-415-2100

### CITY OFFICIALS

Sandy Martin, mayor

651-490-4618 | [smartin@shoreviewmn.gov](mailto:smartin@shoreviewmn.gov)

Emy Johnson, council member

763-443-5218 | [ejohnson@shoreviewmn.gov](mailto:ejohnson@shoreviewmn.gov)

Sue Denkinger, council member

651-260-1940 | [sdenkinger@shoreviewmn.gov](mailto:sdenkinger@shoreviewmn.gov)

Cory Springhorn, council member

651-403-3422 | [cspringhorn@shoreviewmn.gov](mailto:cspringhorn@shoreviewmn.gov)

Brad Martens, city manager

651-490-4611 | [bmartens@shoreviewmn.gov](mailto:bmartens@shoreviewmn.gov)







**DESTINATION PLAYGROUND OPENS**

In November the new destination playground located at Shoreview Commons opened to the public. The playground features six different areas and offers outdoor play opportunities for kids of all ages. Younger kids can follow the river from the hillside slides to the marsh area, zip-line, and tree houses. There are also a number of slides, climbing structures, and swings to enjoy. Older kids can test their skills on the ninja style challenge course. The course has many features such as the high step, balance beam, spider walk, and rope climb.

Located next to the new skatepark, the playground offers a place for families to enjoy the outdoors together. Some construction will continue into the spring, including a restroom and planting and garden work around the play structures.

A formal grand opening will be held in the warmer months once all project work is completed. Details will be available at [shoreviewmn.gov](http://shoreviewmn.gov) later this spring.

**BRAD MARTENS JOINS CITY OF SHOREVIEW**

Last fall, the Shoreview City Council selected Brad Martens as the new city manager. Martens started on Monday, December 6 and was sworn in as the city manager during the city council meeting that evening. "I am very happy to be here and looking forward to working with the city council and employees," Martens stated.



Martens was previously the city administrator for Corcoran, where he had been since 2013. During his time there, he led them through significant growth, including almost \$100,000,000 in new construction in 2020 alone, facilitated strategic goal-setting sessions, completed park master planning, and developed a staff plan to accommodate the fast-growing population.

Prior to Corcoran, Brad was the Winsted City Administrator and New Brighton Community Center Manager. He has a Masters of Public Administration from Hamline University and Bachelors in Recreation Parks and Leisure Services from Minnesota State University, Mankato.



**LONG-TERM COUNCILMEMBER TERRY QUIGLEY PASSES**

Last month, Councilmember Terry Quigley passed away. Councilmember Quigley was a critical part of Shoreview's leadership for the last 21 years and will be remembered for his dedication, grace, authenticity, and humor.

"I am deeply saddened by the loss of my friend and colleague," Mayor Sandy Martin said. "His presence on the city council will be missed, but his legacy of service and impact on Shoreview will be remembered for years to come."

Councilmember Quigley served the city for almost 50 years, starting on the planning commission in 1973 and moving on to various roles before being appointed to the city council in 2001. Some of his past roles include:

- Vice president, human resources, Deluxe Corporation
- Director, American Lung Association of Minnesota
- Mediator, Department of Defense
- Chair emeritus, Employer Support of the Guard and Reserves

The city council is in the process of filling his seat and expects to appoint a new member in March.







### CHURCHILL ST. OPENS IN SHOREVIEW

Carly Gatzlaff had a vision in mind when she launched Churchill St. A restaurant that is a community gathering place with great food was just the start. “We will offer good, locally sourced food that is made from scratch,” she said. “While developing our food is important, we are really planning Churchill St. to offer a much larger benefit to the community as a beautiful, open, and welcoming place to gather for guests and team members alike.”

Churchill St. opened in November 2021 after a year of planning and renovations. Gatzlaff, a Shoreview resident, partnered with Jonathan Gans and Josh Hoyt to renovate the former Ed’s Hardware building into an open-concept restaurant. Gans and Hoyt, both formerly of The Bachelor Farmer, have years of experience helping restaurants develop creative concepts and sustainable business.

The result is a new Shoreview gathering space. With an open layout to encourage a sense of community, and a progressive pay structure that includes a 15% service charge instead of tipping. The menu focuses on brunch staples done well with a unique approach. Blueberry hotcakes, hashbrowns, avocado toast, chicken sandwiches, and burgers are all scratch-made.

Churchill St. is open Thursday-Sunday 7-8 am for coffee and pastries, 8 am - 2 pm for brunch and 5 pm - 9 pm for dinner. The patio will stay open all winter with heaters to accommodate all diners. They hope to add additional days to meet the demands of the community. Check out their website for up-to-date hours at [churchillst.com](http://churchillst.com).

### 2022 UTILITY RATES

Every year, the city reviews its utility rates to see if changes are needed for the coming year. The utility funds pay for the operations and improvements to the city’s utility systems. Utility funds are also considered enterprise funds, which means that the rates charged should cover the expenses.

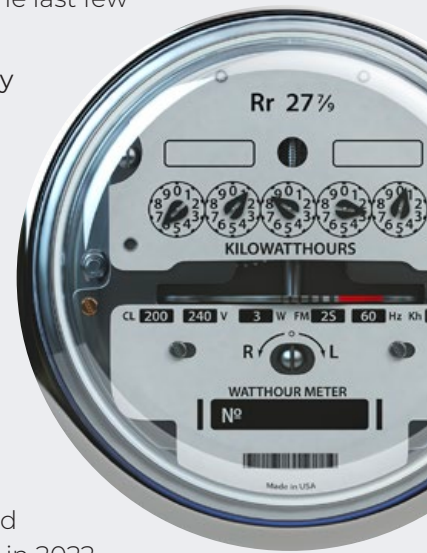
In recent years, the city has experienced revenue shortfalls in the water fund due to reduced water consumption. Annual water rate increases are projected to be more in line with inflation beginning in 2023. We are confident that the recent increases in water rates will allow the city to keep a strong and reliable system and provide safe drinking water. In order to meet the fund’s operating goals, the city has been making higher increases to its water rates the last few years.

What does this mean for your utility bill?

- Your utility bill includes water, sewer, surface water, street lights, and a state fee.
- Water and sewer rates are based on usage.
- Surface water and street lights are based on residential units.

The city does not control the state fee.

Below is what an average household (15,000 gallons) will pay per quarter in 2022.



	2021	2022	Total change	% change
Water	\$71.70	\$76	\$4.30	1.9%
Sewer	\$99.65	\$103.63	\$3.98	1.8%
Surface water	\$33.27	\$35.27	\$2	.9%
Street lighting	\$15.03	\$15.63	\$.60	.3%
State fee	\$2.43	\$2.43	\$0	0%
Total	\$222.08	\$232.96	\$10.88	4.9%

The approved increases went into effect January 1, 2022. For more information, view the 2022 utility operations and rates booklet at [shoreviewmn.gov/utilities](http://shoreviewmn.gov/utilities).

Please contact Terese Roesler, 651-490-4630 | [troesler@shoreviewmn.gov](mailto:troesler@shoreviewmn.gov) with any questions.





# 2021 Citizen Awards



## SHOREVIEW CITIZEN OF THE YEAR: PAUL GARDNER

Paul Gardner was honored by Mayor Sandy Martin and the Shoreview City Council with the 2021 Shoreview Citizen of the Year Award in November 2021.

Paul has been giving back to Shoreview and the greater community for two decades, consistently demonstrating his passion for environmental stewardship and helping protect our planet. In addition to serving on the environmental quality committee, Paul has helped initiate successful programs such as recycling at the Slice of Shoreview and a rain barrel sale for Shoreview residents.

Paul also represented Shoreview as a State Representative. While there, he supported and passed key environmental legislation including the electronics stewardship bill that created the framework for recycling old electronics.

When asked what his favorite memory of volunteering is, he mentioned that the “dirty jobs” are typically the most memorable. These include installing plants in the mud at Snail Lake-Grass Lake Regional Park to dumpster diving at the Slice of Shoreview to fish out recyclable materials. He encourages others to just get started with volunteering and you’ll learn where your time and skills can make the biggest difference.

During her presentation Mayor Martin said, “Paul has a long record of volunteering and public service, especially around protecting the environment, which is truly worth special recognition.”



## CARING YOUTH AWARD WINNER: JOHNNY YUE

Johnny Yue received the 2021 Caring Youth Award in November 2021. This annual award, created by the Shoreview Human Rights Commission, honors the city’s outstanding youth. It reminds us that anyone, no matter their age, can help form the foundation of our community.

As a senior at Mounds View High School, Johnny is using his passion for neuroscience to give back to not only Shoreview but the Twin Cities area. Johnny started his nonprofit, NeuroForHeroes, in May 2020 after realizing how much neuroscience has influenced his ability to learn. The nonprofit provides enrichment opportunities to students to address the achievement gap between black and white youth and bring communities together.

Through NeuroForHeroes, Johnny creates curriculum that teaches topics like memory, vision, and brain development that shows how our brains are essential for everyday functions. He also works with teachers so they can continue the curriculum on their own. Two schools that have benefited from this program are Turtle Lake Elementary and Lucy Craft Laney Elementary in Minneapolis.

In her nomination letter, Kelsey Oakes, a fourth grade teacher at Lucy Craft Laney, describes Johnny as someone who is compassionate and believes each child deserves to have resources available to them to maximize their learning. She believes his work is vital to the health and well-being of today’s youth.

When asked what his favorite part of volunteering is, Johnny said that it’s seeing students’ faces light up when they understand the complex concepts they’re learning about. “Seeing students become excited after learning about these concepts through these activities reminds me firsthand how community service can be so influential in others’ lives and academic journeys.”

It is clear that Johnny will be successful in his future endeavors and will make a difference wherever he goes.







# 2022

## ENVIRONMENTAL QUALITY COMMITTEE SPEAKER SERIES

The speaker series will be held virtually and in-person in 2022. Visit [shoreviewmn.gov/eqc](http://shoreviewmn.gov/eqc) to find out more and view the presentations. Live streams will be available at 7 pm.



### FEBRUARY 16

#### REDUCING HOME ENERGY USE

*John Suzukida, Shoreview Environmental Quality Commission*

Learn how EQC member John Suzukida reduced his home's energy consumption by 75% over the last 15 years.

### MARCH 16

#### MPCA GET THE LEAD OUT

*Kelly Amoth, Minnesota Pollution Control Agency*

Did you know lead fishing tackle kills 20% of common loons? Learn about how we can get the lead out of our tackle boxes and lakes.

### APRIL 20

#### MINNESOTA MOSQUITOES: WHAT'S BUGGING YOU?

*Alex Carlson, Metropolitan Mosquito Control District*

Learn how the district monitors for disease and controls mosquitoes in Minnesota, along with environmental precautions taken to keep Minnesotans healthy.

### MAY 18

#### SELECTING LAWN EQUIPMENT TO IMPROVE AIR QUALITY

*Lisa Thurstin, Minnesota Clean Cities Coalition/  
American Lung Association Minnesota*

Got a smelly lawnmower? Learn about options for more environmentally friendly electric lawn equipment.

#### RAIN BARRELS & COMPOST BINS

The Recycling Association of Minnesota offers residents compost bins, rain barrels, and other items online. Items purchased can be picked up locally at distribution events starting in April. Products and distribution schedules can be found online at [recycleminnesota.org](http://recycleminnesota.org).



#### GREEN COMMUNITY AWARDS

Each year, the Shoreview Environmental Quality Committee recognizes residents and businesses that have had a positive impact on our environment. The green community awards are given to those who improve water quality, install renewable energy, or use eco-friendly practices. Winners receive a small lawn stake and are recognized at a city council meeting.

Applications are available at [shoreviewmn.gov](http://shoreviewmn.gov) and due by July 8.

Questions? 651-490-4665.







## CLEAN WATER, CLEAN CITY

### HYDRANT FLUSHING

City crews will flush fire hydrants in late April. Flushing cleans sediment from the water mains and ensures all hydrants and valves are working properly. Tap water can sometimes change color after hydrant flushing. This is normal and safe for drinking, but could discolor laundry.

### WATER LEAKS

Water leaks in your home can be detected by the public works department. If your water meter shows one gallon of water used every hour for 24 hours you will receive a postcard letting you know that you might have a leak. Leaks are common in toilets, water softeners, faucets, sprinkler systems and humidifiers.

### KEEP IT CLEAN

Did you know? Everything from leaves, grass clippings, sand, motor oil, and pet waste can contaminate our water supply. Keep leaves and grass out of the street – take them to a county-provided yard waste site. Motor oil can be recycled at the Arden Hills drop off. Use erosion control fencing during projects to keep sand and sediment from washing down the drain. And always pick up after your pet, whether it's in your yard, on a trail, or in a park.

### WATERSMART

Did you know – Shoreview residents can view personalized water usage reports online through Watersmart? Watersmart is an online dashboard that can help you save water and money. Sign up today at [shoreviewmn.watersmart.com](https://shoreviewmn.watersmart.com).

### IRRIGATION REBATE PROGRAM

Are you thinking of upgrading your irrigation controller? If so, you can apply for a rebate up to \$150 if you upgrade to a smart irrigation controller.

Visit [shoreviewmn.gov/watersmart](https://shoreviewmn.gov/watersmart) for more information. This program will end on June 30, 2022.

The Metropolitan Council's Water Efficiency Grant Program, with help from the Clean Water, Land and Legacy Amendment, provided partial funding for this program.





# SPRING CLEANUP DAY

OPEN TO SHOREVIEW RESIDENTS ONLY

**SATURDAY, MAY 21, 2022**

7 AM - NOON

MCCULLOUGH PARK | 955 COUNTY ROAD I

Fees: Passenger vehicle: \$30  
Trailer: \$45  
Oversize vehicles: \$100

## Items accepted:

- Electronics
- Appliances
- Tires (limit 4)
- Water softeners
- BBQ grills
- Lawnmowers
- Snow blowers
- Carpeting
- Mattresses/box springs (limit 2)
- Vacuum cleaners
- Furniture

## Items not accepted:

- Household hazardous waste
- Brush/yard waste
- No oversized items like hot tubs, boats, sheds
- No railroad ties
- No engines containing gasoline or oil
- No materials from private contractors

For more information on cleanup day:

651-490-4688 [shoreviewmn.gov/cleanupday](http://shoreviewmn.gov/cleanupday).

For more information on other disposal options:

651-633-EASY or [ramseyrecycles.com](http://ramseyrecycles.com).

## HEARTS AND HAMMERS – PAINTING AND HOME IMPROVEMENT ASSISTANCE

Hearts & Hammers is a nonprofit organization that provides exterior painting and home improvement help. The program helps homeowners remain in their own homes and improves neighborhoods throughout the Twin Cities area.

Help is provided at no cost to the homeowner and the majority of the work is finished in one day, with most work taking place June – October.

## CAN WE HELP YOU OR SOMEONE YOU KNOW?

You can apply for yourself or someone you know at [heartsandhammers.org/homeowner-applications](http://heartsandhammers.org/homeowner-applications).

Do you currently live in and own a single-family residence and plan to stay in your home for at least the next two years? Are you at least 60 years old, a disabled individual or a United States Armed Forces Veteran (or surviving spouse)? Does your household income meet our income guidelines?

Do you want to volunteer for Hearts and Hammers? The more volunteers we have, the more houses we can paint! Individuals or groups can sign up to volunteer at [heartsandhammers.org/volunteers](http://heartsandhammers.org/volunteers).

For more information visit [heartsandhammers.org](http://heartsandhammers.org) or call 651-636-0797.







## 2022 Annual Tree Sale

New species are available for the 2022 Shoreview tree and shrub sale. Planting a wide variety of trees and shrubs increases the diversity of our urban forest and improves resilience in both your yard and the community.

Residents can purchase up to five trees and 10 shrubs per household at wholesale prices. One watering bag per tree is also available. Please note that watering bags are not suggested for evergreen trees or shrubs.

Orders are due Friday, April 15, 2022 and trees will be delivered to your home by city crews in late May. Wholesale trees and shrubs do not include a guarantee, please be prepared to plant and care for the trees. Order online at [shoreviewmn.gov/tree-sale](http://shoreviewmn.gov/tree-sale) or by mailing the below form to city hall.

### 2022 TREE AND SHRUB ORDER FORM

Name: \_\_\_\_\_

Address: \_\_\_\_\_

Phone Number: \_\_\_\_\_

Email Address: \_\_\_\_\_

Species	Container Size	Height (Feet)	Width (Feet)	Shade Tolerance	Fall Color	Price	Qty	Subtotal
Red prince weigela	#5	5-6'	5-6'	Full sun	Green	\$28		
Diabolo ninebark	#5	8-10'	8-10'	Full sun to part shade	Red-purple	\$28		
Prairie gold aspen	#10	25-40'	15-20'	Full sun	Yellow	\$160		
Autumn brilliance serviceberry	#10	20-35'	15-20'	Full sun to part shade	Yellow	\$122		
Blue beech	#10	20-30'	15-30'	Full sun to full shade	Orange-red	\$160		
Swamp white oak	#10	50-60'	50-60'	Full sun	Orange-yellow	\$160		
Eastern white pine	#15	50-80'	20-40'	Full sun	-	\$136		
Eastern red cedar juniper	#10	20-30'	10-15'	Full sun	Green-red/brown	\$95		



Tree watering bag: Holds 20 gallons

\$20

## Shrubs



**Red Prince Weigela**  
– Upright shrub with dark green leaves and bright red flowers that attract pollinators and hummingbirds. Moderate growth rate and does well in full sun.



**Diabolo Ninebark** – A hardy native shrub with deep red-purple foliage. White flowers bloom in spring and summer fruit attracts birds and pollinators. Does best in full sun but is tolerant of partial shade. Moderate growth rate and tolerates most soils but likes room to grow.



**Autumn Brilliance Serviceberry** – Small, ornamental tree with beautiful orange-red fall color and white flowers in spring. Flowers and summer fruit attract birds and pollinators. Hardy and adaptable to the urban environment.



**Swamp White Oak** – A durable, native tree that is drought resistant and adaptable to most soils. Dark green summer leaves turn orange-yellow in fall. Fruit attracts wildlife but can be messy. Susceptible to diseases and insect pests.



**Blue Beech/American hornbeam** –

A slow-growing tree with a unique branch and trunk form. Bark has a blue-gray color and smooth texture. Dark green foliage changes to red, orange, and yellow color tones in the fall.



**Prairie Gold Aspen** – A fast-growing tree that is tolerant of harsh urban conditions and turns yellow in the fall. High disease resistance and adaptability.

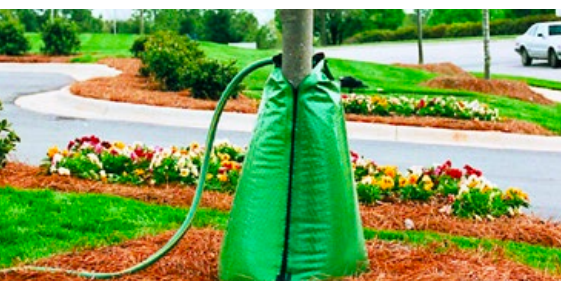
## Evergreen trees



**Eastern Red Cedar Juniper**  
– A cold-hardy, adaptable evergreen with reddish brown bark and silver-blue foliage that can keep color through winter. Blue-green fruit attracts birds and other wildlife in the fall and winter. Caution planting near apple or pear trees.



**Eastern White Pine** – Fast-growing and an adaptable evergreen with soft blue-green needles. Ideal for windbreak or screening. Is susceptible to pests, salt damage, and deer grazing.



**Tree watering bag** – The tree watering bag is a slow release watering system for trees. One watering bag holds approximately 20 gallons of water and drips 6-10 hours with two holes open, reducing watering frequency by 50% and significantly reducing transplant shock.







Shoreview Community Foundation advisory board members handed out free ice cream treats to concert-goers at the first Concert in the Commons in June.

## SHOREVIEW COMMUNITY FOUNDATION

The Shoreview Community Foundation would like to thank all the generous sponsors and donors who contributed to the foundation's good works throughout the pandemic. In spite of some canceled events, the foundation found ways to drive its mission to "maintain, enhance and enrich the quality of life in Shoreview by connecting the generosity of people who appreciate Shoreview with the evolving needs of the community." Five grants were awarded in 2021 to organizations serving Shoreview residents in the areas of arts and culture, recreational places, community enhancement and leadership development, human services, and historical preservation. The foundation also played a key role in the Suburban Ramsey Covid-19 Response Coalition. In September the friendship garden, the foundation's signature project in partnership with the City of Shoreview, was unveiled at Shoreview Commons.

If you would like to be part of this group, applications are open for a board seat. Qualifications include leadership experience, outstanding work ethic, energetic, self-starter, and goal-oriented, strong problem solving and critical thinking skills, strong written and verbal skills and committed to serving the community of Shoreview. Primary responsibilities of the all-volunteer board are managing the work of the foundation, including organizing community events, raising funds for the endowment, publicizing foundation goals and activities, and approving annual grants to benefit Shoreview residents. Board members commit to financially supporting the organization, actively engage in monthly all-board meetings, serve on one of several committees, communicate with donors and constituents, and drive organizational planning and management. Applicants with a passion for community service are encouraged to apply by sending a resume and brief inquiry to: [shoreviewcommunityfoundation@gmail.com](mailto:shoreviewcommunityfoundation@gmail.com).

## NYFS SENIOR CONNECTIONS PROGRAM REDUCES ISOLATION, INCREASES CONNECTION

Know a senior who could use some help? Northeast Youth & Family Services' Senior Chore program staff are checking in via phone with local elderly residents to reduce isolation and help seniors connect to local resources and support systems.

If you or someone you know would like to receive a friendly support call, or you belong to an organization that could use help checking in on your senior community, please contact NYFS at 651-486-3808 or [info@nyfs.org](mailto:info@nyfs.org).



## MEETING BROADCAST SCHEDULE

Channel 16 broadcasts live city council and planning commission meetings every month.

### Live Shoreview City Council Meetings

- First and third Monday every month at 7 pm

### Live Shoreview Planning Commission Meetings

- Fourth Tuesday of the month at 7 pm

View the full schedule and replay information at [shoreviewmn.gov](http://shoreviewmn.gov). Council and planning commission meetings can be streamed live at [shoreviewmn.gov/agendas](http://shoreviewmn.gov/agendas).



[cityofshoreview](https://www.facebook.com/cityofshoreview)



## ACCESS SHOREVIEW

Sign up to receive our online newsletter that is sent after each meeting with news and events.

Visit [bit.ly/AccessShoreview](https://bit.ly/AccessShoreview)



# PARKS & RECREATION

## Registration

### SET UP YOUR ACCOUNT

- 1. Go online**  
Visit [shoreviewmn.gov/parks-rec](http://shoreviewmn.gov/parks-rec). Click "register online." Create an account.
- 2. Create an account**  
Enter information about yourself. Before you save, add family members that participate in programs by clicking "add new member."
- 3. Ready, set, register!**  
Click the green "+" next to an activity, then "add to cart" at the bottom of your screen. Complete payment with credit card and a receipt will be emailed to you.

### POLICIES

- Five days notice required for cancellations
- Cancellation fee \$5 - \$10 depending on the program
- No refunds for missed classes
- Scholarships available for Shoreview residents; restrictions apply



Program dates are subject to change depending on the Minnesota Department of Health recommendations regarding COVID-19.

Visit our website for the most accurate information: [shoreviewmn.gov/parks-rec](http://shoreviewmn.gov/parks-rec).

## Registration schedule

Registration begins at 8 am

### SPRING REGISTRATION SCHEDULE

**Tuesday, March 8:** Shoreview residents

**Thursday, March 10:** Annual members

**Friday, March 11:** General registration

### CONTACT US

Parks & Rec

Monday – Friday: 8 am – 4:30 pm

651-490-4750

[recreation@shoreviewmn.gov](mailto:recreation@shoreviewmn.gov)



### WEATHER UPDATES

For weather updates call 651-490-4765





# Membership Rates and Benefits



## MEMBERSHIP FEES

### Annual Membership<sup>1</sup> (with one year membership agreement)

	FAMILY	DUAL	ADULT	YOUTH/SENIOR
Rate*	\$880	\$760	\$525	\$425
Shoreview Resident	\$700	\$625	\$410	\$350
Military*	\$840	\$720	\$495	\$405
Military Resident*	\$680	\$600	\$395	\$340

### Annual Membership Billed Monthly<sup>1</sup> (With one year membership agreement)

	FAMILY	DUAL	ADULT	YOUTH/SENIOR
Rate*	\$81	\$69	\$49	\$43
Shoreview Resident*	\$68	\$60	\$40	\$34
Military*	\$78	\$66	\$47	\$41
Military Resident*	\$65	\$57	\$38	\$32

<sup>1</sup> \$100 early cancellation fee \* Sales tax is included in price.

### Seasonal Membership (Three month)

	FAMILY	DUAL	ADULT	YOUTH/SENIOR
Rate*	\$335	\$315	\$225	\$175
Shoreview Resident*	\$267	\$247	\$175	\$145

Military rate not available for seasonal memberships.

- Seniors: 65 & older
- Youth: 17 & younger
- Dual membership is two people living in the same household. Family is two adults plus dependent children under 23 living in same household. Proof of dual and family member qualification is required.
- Military ID required for military rate.
- Fees are subject to change.
- We accept payment by any major debit/credit card.
- Free guest passes are included with annual membership

### Annual membership includes unlimited use of:

- Fitness center (14 years and older. Children 12 and 13 years old must complete a teen equipment orientation to use the fitness center.
- 30% off Group X Card for group fitness classes
- Shoreview waterpark, including tropics and bamboo bay
- Indoor playground (Ages 1 - 10)
- Indoor track (14 years and older)
- Basketball courts
- Whirlpool (18 years and older)
- Members registration day and the ShoreViews home mailing.



### FIRST TIME ANNUAL MEMBERS RECEIVE:

- 1 family guest pass
- 1 adult guest pass
- 1 fitness drop-in class pass
- 1 cafe coupon
- 1 kids care sampler card
- 10% off personal training packages of three or more sessions
- 1 playground pass
- 1 pass for 10% off of Group X Card or more classes (Silver & Fit, SilverSneakers & OnePass members are not eligible for these coupons)





## General Information and Hours

Hours and rates are subject to change depending on Minnesota Department of Health regulations. Visit [shoreviewmn.gov](http://shoreviewmn.gov) for the latest information.

### DAILY RATES:

All guests must pay admission; this includes non-swimming guests and adults in the playground and gymnasium.

DAILY PASS	RATE	SHOREVIEW RESIDENT	MILITARY	MILITARY RESIDENT
Adult (18 and older)	\$11.25	\$10	\$10.25	\$9.25
Youth (1 to 17; under)	\$10.25	\$8.75	N/A	N/A
Family* (2 adults + children living in same household)	\$43	\$36	\$41	\$34
Seniors (65 and older)	\$10.25	\$8.75	\$9.75	\$8.25

\*Family pass is limited to six individuals living in same household. Each additional person is \$4.50.

INDOOR PLAYGROUND ONLY	RATE	SHOREVIEW RESIDENT
Ages 1 to 10	\$6	\$6

COUPON BOOKS (10 DAILY PASSES)	RATE	SHOREVIEW RESIDENT
Adult	\$101.25	\$90
Youth/Senior	\$92.25	\$78.75
Indoor Playground	\$54	\$54

SENIOR TRACK DISCOUNT (65 & OLDER)	RATE	SHOREVIEW RESIDENT
Track use only		
Per visit	\$5.75	\$4.75
Punch card (includes 10 visits)	\$51.75	\$42.75

Fees are subject to change. We accept any major debit/credit card. All rates above include sales tax. Visit [shoreviewmn.gov](http://shoreviewmn.gov) for updates.

**HOURS** Children 12 & under must be supervised by an adult while in the community center.

DAY	COMMUNITY CENTER	PLAYGROUND
Monday – Friday	5 am – 9 pm	8 am – 8 pm
Saturday	6 am – 8 pm	noon – 8 pm
Sunday	6 am – 8 pm	noon – 6 pm

### HOLIDAY HOURS

April 17	6 am - noon	8 am - noon
May 30	5 am - noon	8 am - noon



### POOL HOURS

The waterparks, lap swim, and open swim are available at various times throughout the week.

See the service desk for a schedule or visit [shoreviewmn.gov/waterpark](http://shoreviewmn.gov/waterpark). Reservations required for lap swim.

### KIDS CARE

Child care is available for community center customers.

See page 25 for details



### DROP-IN VOLLEYBALL

Sunday, 8 - 10 am, Tuesday & Thursday, noon - 1 pm

For waterpark hours please visit [shoreviewmn.gov/waterpark](http://shoreviewmn.gov/waterpark).

See page 16 for holiday hours





# Pool Information



## CALL FOR MORE INFORMATION

Community center	651-490-4700
Recreation programs (classes)	651-490-4750
Rental information	651-490-4790
Pool rental information	651-490-4780
City Information	651-490-4600

[shoreviewcommunitycenter.com](http://shoreviewcommunitycenter.com)

## COVID-19 POLICIES

- If you or a member of your party are not feeling well, please do not visit the facility
- The pool and locker rooms will be sanitized regularly.

Reservations are not required for the waterpark. Reservations are required for lap swim. To change or cancel your lap swim reservation

- Call 651-490-4780
- Reply directly to your confirmation email



## Holiday Hours

DATE	TROPICS	BAMBOO BAY
April 17	Closed	Closed
May 30	Closed	Closed



Pool schedule is subject to change depending on Minnesota Department of Health recommendations regarding COVID-19. Visit our website for the most accurate information:

[shoreviewmn.gov/waterpark](http://shoreviewmn.gov/waterpark)







Information is subject to change due to COVID-19. Visit [shoreviewcommunitycenter.com](http://shoreviewcommunitycenter.com) for details.



## *Summer Saturday Package*

Package includes:

- Shoreview room & deck
- Haffeman pavilion
- Garden space

*Saturdays, May - September*

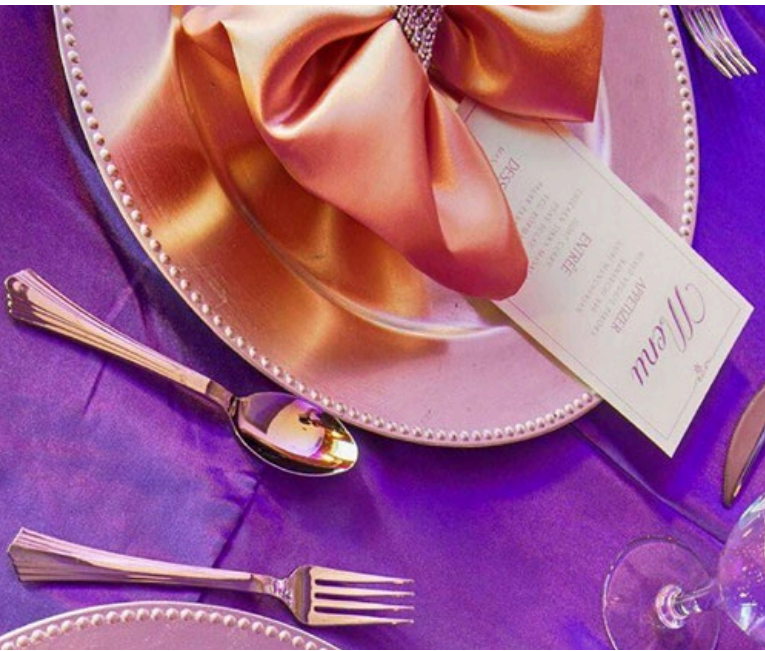
Shoreview resident \$1,850

Non-residents \$1,950





# Large Events



## SHOREVIEW ROOM

- Maximum capacity of 300 people
- Includes adjacent fireside lounge
- Private outdoor deck
- Choose your own licensed caterer
- Alcohol service available with in-house provider

Days	Rate	Shoreview resident
Sun – Thurs	\$900	\$800
Fri	\$1,300	\$1,200
Sat	\$1,550	\$1,450

## WEDELL COMMUNITY ROOM

- Maximum capacity of 250 people
- Choose your own licensed caterer
- Alcohol service available with in-house provider

Days	Rate	Shoreview resident
Sun – Thurs	\$625	\$550
Fri	\$975	\$875
Sat	\$1,175	\$1,075

## HALF COMMUNITY ROOM

- Available Sunday – Thursday
- Maximum capacity of 100 people

Days	Rate	Shoreview resident
Sun – Thurs	\$380	\$350



# Outdoor Spaces



## HAFFEMAN PAVILION

- Permanent picnic tables seat up to 150 guests
- Located in Commons Park, next to the community center
- Indoor room with air conditioning, restrooms, and fireplace

## GARDEN SPACE

- Lawn space with AV capabilities
- Decorative pond with fountain and benches
- Ideal space for ceremonies
- Located next to the pavilion

Days	Month	Area(s)	Rate
Fri or Sun	May – Sept	Haffeman pavilion & garden space	\$650
Fri or Sun	Mar, Apr, Oct	Haffeman pavilion	\$325

## CONTACT US

Monday – Friday, 9 am – 4:30 pm  
 651-490-4790  
[rentals@shoreviewmn.gov](mailto:rentals@shoreviewmn.gov)

## PARK SHELTERS

Small shelters are available at most Shoreview parks. The daily rental fee is \$40. Learn more at [shoreviewmn.gov](http://shoreviewmn.gov).

Park shelter	Capacity
Bucher	4 tables; up to 24 people
Lake Judy	2 tables; up to 15 people
McCullough	2 tables; up to 15 people
Shamrock	5 tables; up to 40 people
Sitzer	4 tables; up to 32 people
Commons	3 tables; up to 20 people

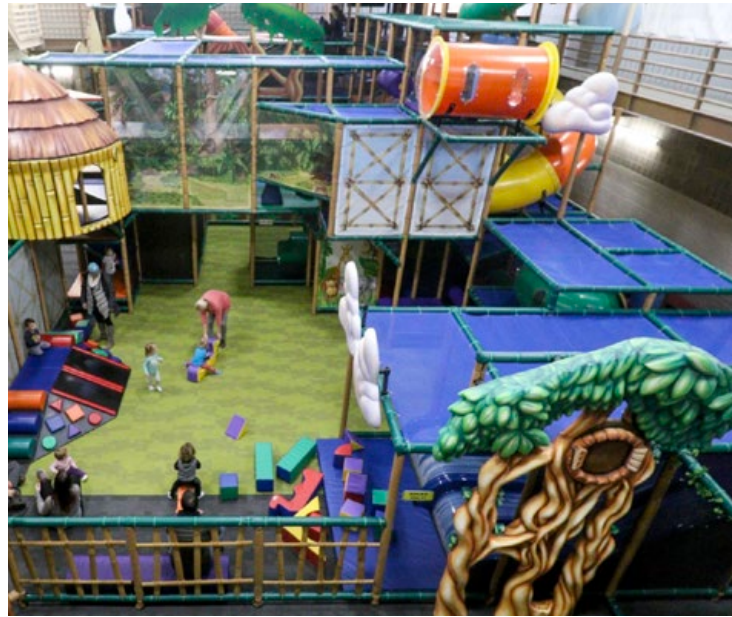
The following parks are owned and operated by Ramsey County Parks & Recreation. For more information call 651-748-2500 or visit [ramseycounty.us](http://ramseycounty.us).

- Island Lake County Park
- Lake Owasso County Park
- Snail Lake County Park
- Turtle Lake County Park





# Exclusive Parties



## Bamboo Bay exclusive

- Exclusive access to Bamboo Bay waterpark and cabanas
- Admission included
- 30 days notice required

Day	Time
Friday	5 - 7:30 pm
Sunday	9 - 11:30 am

Total guests	No food	You provide food
50	\$625 + tax	\$725 + tax

## Indoor playground exclusive

- Exclusive use of the indoor playground
- Includes playground admission
- Table seating for 12 guests; up to 75 people allowed in the playground area
- Bring your own food and cake

Days	Time
Saturday and Sunday	9 am - noon

Rate	
Shoreview resident	\$275
Non-resident	\$300





# Birthday Parties



## POOLSIDE CABANA

- Semi-private space, located in Bamboo Bay waterpark
- Seating for 16 guests
- Admission sold separately

Day	Duration	Rate	Shoreview resident
Sat - Sun	3 hours	\$200	\$180
Tues & Thurs	2 hours	\$150	\$125

## POOLSIDE PARTY ROOM

- Private room, located downstairs
- Seating for 35 guests
- Jumbo locker included
- Admission sold separately

Day	Duration	Rate	Shoreview resident
Fri - Sun	2 hours	\$220	\$200

## ACTIVITY ROOM

- Private room, located upstairs
- Large windows with natural lighting
- Seating for 35 guests
- Adjacent rooms available for extra fee
- Admission sold separately

Day	Duration	Rate	Shoreview resident
Mon - Thurs	2 hours	\$85	\$75
Fri - Sun	3 hours	\$170	\$150

## PLAYGROUND PARTY AREA

- Semi-private space, located in playground
- Seating for 12 guests
- Admission sold separately

Day	Duration	Rate	Shoreview resident
Any	3 hours	\$150	\$125

## MEETING ROOM

- Private room, located upstairs
- Seating for 20 guests
- Adjacent rooms available for extra fee
- Admission sold separately

Day	Duration	Rate	Shoreview resident
Mon - Thurs	2 hours	\$65	\$50
Fri - Sun	2.5 hours	\$95	\$80



## CONTACT US

Monday - Friday, 9 am - 4:30 pm  
651-490-4790  
[rentals@shoreviewmn.gov](mailto:rentals@shoreviewmn.gov)





# Group Fitness



## GROUP X CARDS

- Good for all fitness classes
- Class schedule is available online and at the community center
- Purchase at the parks & recreation desk or by phone at 651-490-4750 during office hours (Monday - Friday, 8 am - 4:30 pm)
- You can reload your Group X Card online, in person, or by phone at 651-490- 4750
- To use: swipe your Group X Card at any of the four kiosks
- The kiosk will print a receipt that you will give to the instructor

QUANTITY	REGULAR	ANNUAL MEMBER	RESIDENT	RESIDENT ANNUAL MEMBER
5 Classes	\$49	\$35	\$45	\$33
10 Classes	\$96	\$70	\$88	\$65
25 Classes	\$240	\$175	\$219	\$162
50 Classes*	\$454	\$335	\$418	\$308

\*5% discount included in price.

- One Group X Card allowed per person.
- Cards are non-refundable and non-transferrable.
- Member discount applies to annual memberships only. Onetime drop-in passes are available at the lower-level service desk the day of class.
- SeniorFIT do not require registration.

## GROUP FITNESS CLASSES

Call for information: 651-490-4750

- Please check class schedule at the beginning of the month
- Refunds are issued for medical reasons only
- Membership is not required
- SeniorFIT classes are free to only seniors with an annual senior membership.
- All classes are 50 to 60 minutes unless otherwise noted
- Classes with six participants or fewer are subject to change or cancellation
- Group fitness classes are great for all fitness levels
- Find out which classes best suit your needs by calling the fitness coordinator at 651-490-4768





# Group Fitness

## STEP CARDIO

Warm up with basic step moves and then learn fun choreographed patterns, combinations, and movements on an adjustable step.

## DANCE JAM

Dance your heart out while getting an amazing workout

## FUNDAMENTAL COMBO

Low impact cardio followed by basic strength training.

## H.I.I.T. (HIGH INTENSITY INTERVAL TRAINING)

Intervals of extreme cardio and/ or resistance followed by a short recovery.

## KETTLEBELL TRAINING

- Conditioning drills with kettlebells provides a total body workout.
- Power strength weightlifting with barbells and dumbbells.
- Focused on building muscle mass and strength.
- Focus on technique – heavier weight, lower reps, multiple sets.



## 60/40

The first 60% of the class is cardio – either high/low impact cardio, step, kickboxing, or dance followed by the remaining 40% of class time to execute effective resistance exercises.

## BARRE PRINCIPLE

In each energizing and targeted workout, you'll use the barre and exercise equipment such as mini-balls and small hand weights to sculpt, slim, and stretch your entire body.

## CARDIO KICKBOXING

A dynamic and energetic class that combines kicks, punches, and blocks. This athletic-based class is easy to follow and provides a challenging workout.

## CYCLE RAVE

We pedal to the music and that's it! Experience a fun, crazy party on your bike! You will be amazed at the workout you get.

## CYCLE TRAINING

Ideal tool to compliment the outdoor cyclist. Doing hills, sprints, flat roads while using time, speed, and distance drills, this workout will help increase your overall performance in speed, power, and endurance.

## THE RESISTANCE WORKOUT

Incorporates strength training exercises using various pieces of equipment and/or your own body weight. Class focuses on all major muscle groups with some added attention to form. Progressions can include compound exercises and functional balance exercises.

## THE GROOVE

In this choreographed class you will learn one awesome dance routine. You will be amazed at the great workout while you get your "groove" on!

## TOTAL BODY WORKOUT

Incorporates exercises designed to enhance your agility, speed, power, strength, and quickness. Equipment used may include weights, TRX (suspension training), kettlebells, bands, benches, and BOSU® balls. The class will also elevate your heart rate as you are challenged with drills in either circuits and/or a stand-alone station.

## POWER PUMP

- Weight training with free weights and dumbbells.
- Build lean muscle with different tempos for reps, higher reps, and supersets.

## ZUMBA®

Grooving to the beats of salsa, reggaeton, cumbia, hip hop and merengue, this class feels more like a dance party than a workout, which is exactly what makes Zumba® so popular! The Latin-inspired dance workout is one of the most popular group exercise classes around.





## MIND/BODY CLASSES

### **STRETCH AND BALANCE**

A beneficial blend of balance exercises and static (holding) and dynamic (moving) stretches.

### **YIN/RESTORATIVE YOGA**

This grounding practice will have fewer postures which you hold for longer periods of time, allowing you to focus on breathing into the connective tissue (fascia) that surrounds the joints in the body.

### **YOGA BASICS**

This class is based on physical postures, deep breathing, mindfulness, and listening to the body. A slower paced class that focuses on fundamental postures. Great class for beginners or for one seeking a modified (gentle) yoga class option.

### **HOT YOGA**

Intense practice that will move you through powerful and aggressive postures and/or series. This practice is meant to detoxify the body, build strength, and burn calories through movement, breath, and heat. Designed for intermediate to advanced levels.

Class temp range is 80-90 degrees.

### **FITNESS PILATES**

Focus on balancing all muscle groups, strength, and flexibility, with an emphasis on challenging the core muscles with each movement.

### **POWER YOGA**

Students will focus on linking conscious breath with a vigorous and mindful flow. Participants will build strength, flexibility, and concentration while cleansing the body and calming the mind.

### **YOGA/PILATES FUSION**

The perfect combination of Pilates and yoga! Receive the benefits of core training, muscle contraction and lengthening, isometric holds, balance postures, and mind/body awareness.

### **YOGA SCULPT**

Fusion of vinyasa yoga and strength endurance training. This unique and intense workout incorporates hand weights and is designed to tone and shape your body. Build stamina through a series of squats, lunges, crunches, plank holds, cardio work, balancing postures, and stretching.





# Water Fitness



## WATER FITNESS CLASSES

All water classes are held in the pool.

- The pool is between 3 1/2 and 4 1/2 feet deep
- All fitness levels are welcome
- The pool temperature is between 83 - 84 degrees

## AQUA FIT

Enjoy this active water class! You will increase your flexibility, endurance, and overall muscle strength in the water. The water's resistance provides a whole body workout.

## SENIORFIT AQUA EXERCISE

Join us for a low-impact water class. You will work on increasing your cardiovascular health, flexibility and overall range of motion. Swimming ability is not required.



## Kids Care

Kids Care provides a stimulating and safe environment for children 6 months to 8 years of age. Kids can explore and interact with other children while you enjoy the community center's amenities. First come, first served. Max 2 hour stay.

Kids Care phone number: 651-490-4763

### CLOSED:

May 30

July 4

### HOURS

Monday - Saturday: 8 am - 12:30 pm

Monday - Thursday: 4 - 8:30 pm

Friday: 4 - 7 pm

### COST

\$1 per hour

(no pro-rating for partial hours)







## SENIORFIT CLASSES

SeniorFIT classes are free to annual senior members. If you are not an annual senior member, you may purchase a Group X Card or a drop-in pass. See page 22 for Group X Card information. All fitness levels are welcome.

## SENIORFIT CHAIR YOGA

Experience the benefits of yoga while sitting in a chair. Some standing postures may be included in this class.

## SENIORFIT STRENGTH TRAINING

Resistance exercise executed while sitting in a chair. Come join us for a great strength training workout in a comfortable setting.

## SENIORFIT AQUA EXERCISE

Join us for a low-impact water class. You will work on increasing your cardiovascular health, flexibility and overall range of motion. Swimming ability is not required.

## SENIORFIT LET'S MOVE

No chairs needed for this active movement class. Class ends with a 15-minute cool down and extended stretch.

Check with your health insurance provider to see if you qualify for a Silver&Fit® or Silver Sneaker membership! These memberships include free membership to the community center (admin fee may apply); membership does not include SeniorFIT group fitness classes. Stop by the community center for details and to sign up

See page 28 for pickleball information

## SPRING SESSION APRIL 4 – MAY 27

Registration is not required.

CLASS/INSTRUCTOR	DAY	TIME
Chair yoga: Scott	Monday	8:30 am
Aqua exercise: Fran	Monday	9 am
Strength training: Nancy/Perry	Tuesday	8:30 am
Chair yoga: Gretchen	Wednesday	8:30 am
Aqua exercise: Fran	Wednesday	9 am
Let's Move: Perry	Thursday	8:30 am
Strength Training: Denise	Friday	8:30 am







## COMMUNITY CENTER MEMBER EQUIPMENT

### ORIENTATION (INDIVIDUAL OR GROUP)

Get introduced to fitness center equipment and learn how to utilize strength and cardio equipment safely. The schedule and sign-up sheet for equipment orientations is located at the fitness center desk. For more information call 651-490-4768.

AGES	COST
All members of the community center are encouraged to attend a one-time fitness equipment orientation.	FREE to members

### INDIVIDUAL TEEN EQUIPMENT ORIENTATION

The teen equipment orientation provides 12 and 13-year-olds knowledge of proper form and appropriate use of fitness equipment.

Registration forms are available at the front desk and lower level service desk. The schedule is located at the fitness center desk, or call 651-490-4768 for more information

AGES	COST
Required for ages 12 and 13 to use the fitness center	\$40 \$35 SV Res

## PERSONAL TRAINING

- Personal training comes in packages of 3, 6 and 12 sessions
- All sessions expire one year from the date of purchase
- Trainers help you set realistic goals and determine safe strategies to achieve them
- Trainers will customize a program to fit your ability and health
- Trainers monitor progress and adapt your routine for consistent improvement
- Learn fitness principles and correct form to aid in progress and prevent injuries

### INDIVIDUAL PERSONAL TRAINING:

SESSIONS	REGULAR	RESIDENT
3	\$226	\$209
6	\$426	\$396
12	\$806	\$734
24	\$1,525	\$1,391

### BUDDY PERSONAL TRAINING:

Two participants train together and each pay the fee below.

SESSIONS	REGULAR	RESIDENT
3	\$173	\$159
6	\$320	\$297
12	\$606	\$559





# Adult Sports



## INDOOR DROP-IN PICKLEBALL

All are welcome! You do not need to be a member of the Shoreview Area Pickleball Club for indoor drop-in play.

Pickleball punch card: \$40 (11 visits)

Punch card is good for both drop-in locations Available for purchase at the parks & recreation office or by calling 651-490-4750

**Office hours:** Monday - Friday, 8 am - 4:30 pm

**Location:** Community center

AGES	DAY & TIME	COST
18+	Mon – Fri Oct 4 – April 29 8 – 11 am	Free to community center members \$4 non-member

**Location:** Island Lake School gym (masks required per school district policy)

AGES	DAY & TIME	COST
18+	Wed Sept 29 – May 18 5:30 – 9 pm (Closed May 4)	\$4 per person

## OUTDOOR SHOREVIEW AREA PICKLEBALL CLUB

Join the Shoreview Outdoor Pickleball Club. Name tag must be worn for proof of membership. You will receive more information from the club after registration.

- Dedicated play time at two parks
- Balls and nets
- Free beginner instruction (Commons cts)
- Organized ladder tournaments (Commons crts)
- Skill/drill sessions (Commons crts)
- Name tags
- Fall pizza social and Spring potluck
- Tournaments and prizes
- Discounted equipment/clothing at Dave's Sport shop in Fridley
- CPR/AED instruction
- Ratings instruction (new)

## OPEN PLAY: Beginner and social players Commons Park Courts

Monday – Friday 8:30 – 11 am

Tuesday & Thursday 6 – 8 pm

## COMPETITIVE INTERMEDIATE AND ADVANCED (rated 3.5+) Bobby Theisen Courts

Monday, Wednesday, & Friday 8 – 11 am

Sunday, Tuesday, & Thursday 6 – 8 pm

## NEW ORGANIZED QUARTET PLAY AT BOBBY THEISEN

Sunday, Tuesday, & Thursday: 6 – 8 pm. See website for details.



### ADULT ACTIVITIES NEWSLETTER

Sign up to receive a copy of our quarterly adult activities newsletter. It contains additional program offerings, interesting articles, and more. Call 651-490-4714 to join our mailing.



### ELDER FRIENDS PHONE COMPANIONS

Little Brother's Friends of the Elderly Phone Companions is open to any elder in need of a warm, friendly voice on the phone. Register online at [littlebrothersmn.org](http://littlebrothersmn.org) or call 612-721-6215 for more information.



### ALZHEIMER'S ASSOCIATION Helpline 24/7/365 · 800-272-3900

Dial 711 for a TRS operator

Helpline specialists and clinicians offer confidential support and information to people living with the disease, caregivers, families and the public.

Call: We are available in any language around the clock, at 800-272-3900.

E-Chat: Visit [Alz.org](http://Alz.org), click the green "we're here to help" button to connect with Helpline staff. Live chat is typically available from 7 am – 7 pm (CST) Monday - Friday. See page 29 for Shoreview group.







## DEMENTIA CARE GIVER SUPPORT GROUP WITH RESPITE CARE

This support group is led by a trained facilitator from Alzheimer's Speaks. In a nearby room your loved one can enjoy activities lead by Brookdale North Oaks. The program is free. Registration requested but drop-ins are welcome if space is available.

AGES	DATE	TIME	ACTIVITY #
18+	Wed, March 30	10 – 11 am	200180-01
	Wed, April 27	10 – 11 am	200180-02
	Wed, May 25	10 – 11 am	200180-03



## FREE TEN-MINUTE FUNCTIONAL BALANCE SCREENING BY OSI PHYSICAL THERAPY

Make an appointment for an in-person screening to measure your fall risk and identify areas to strengthen. Past participants are fans and recommend the evaluation to their friends. You can re-test to see your progress.

Evaluate:

- Static and dynamic balance systems to establish fall risks
- Identify any areas that could benefit from focused strength training
- Identify simple assistive devices

Ten minute appointments available from 9 - 10 am. Register online or call 651-490-4714.

AGE	DATE	ACTIVITY #
55+	Tues, March 1	200160
	Tues, April 5	200161
	Tues, May 3	200162
	Tues, June 7	300160

# Adult Programs



## 500 CARD CLUB

Join us for cards and conversations. No partner required.

AGE	DATE	TIME	COST
55+	Mondays	12:30 pm	Free



## 500 tournament

Tuesday, April 19, 1 - 4 pm

**\$10 per person**

(\$4 entry fee, \$6 event fee)

Partners assigned at the door  
Registration deadline: April 12



## LOOKING FOR A VOLUNTEER OPPORTUNITY?

RSVP is the one-stop volunteer connection for people 55 and over. They'll match you with rewarding opportunities and help with issues that matter to you. Learn more at [rsvpmn.org](http://rsvpmn.org) or call 612-704-6116.



## MEALS ON WHEELS

The Meals On Wheels program is available to eligible seniors and certified, disabled individuals (regardless of age) who live in Mounds View School District 621. Hot, nutritious noon meals are delivered by volunteers Monday through Friday, except on holidays. For more information, call 651- 621-7950.



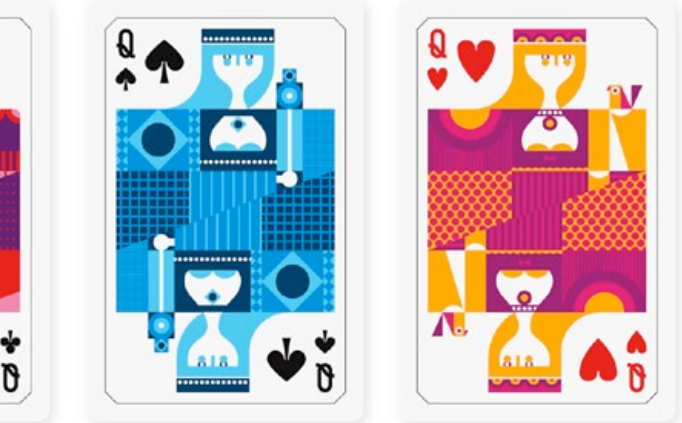
## SENIOR LINKAGE LINE 800-333-2433

A free state-wide resource supporting older Minnesotans and their caregivers. Get connected to local resources, housing, Medicare information, and free classes. Senior LinkAge line is a division of the MN Board on Aging; working to ensure that all Minnesotans can age and live well.





# Adult Programs



## LEARN TO PLAY BRIDGE

Learn to play or brush up on your bridge skills. This class is taught by an American Contract Bridge League certified instructor, Silver Life Master and club director. A bridge handbook is included.

**Registration deadline:** March 1

AGE	DATE & TIME	COST	ACTIVITY #
18+	Tues & Thurs March 15 – April 7 9:30 – 11:30 am	\$73; \$67 SV Res	200360-01

## CHAT FRIENDLY NOVICE BRIDGE TOURNAMENT

Designed for novice players who want to sharpen their skills for future tournaments. The first half of play is “open” hands where players can ask questions. The second half is a traditional competitive format. Judged by an American Contract Bridge League instructor. Door prizes are included, no prizes for play.

**Registration deadline:** March 29

AGE	DATE & TIME	COST	ACTIVITY #
18+	Tues, April 12 1 – 3 pm	\$5; \$4 SV Res	200360-02



## VOLUNTEERS WANTED: AARP DRIVER SAFETY PROGRAM

AARP is looking for volunteers to become instructors for driver safety programs and their Tax Aide Team.

If you're interested in learning about becoming a driver safety class instructor visit: [aarp.org/volunteer/programs](http://aarp.org/volunteer/programs)

## AARP SMART DRIVER TEK

A live, online, interactive workshop

Get Smart about new vehicle technology in a 90-minute workshop. You'll learn the latest high-tech safety features in your current car, or what technology to look for when shopping for a new car. The safety benefits of blind spot warning systems, forward collision warnings and more.

Visit [AARP.org/SDTEK](http://AARP.org/SDTEK) to join a free workshop.

## AARP DRIVER SAFETY PROGRAM

Taught by AARP trained instructors, Smart Driver teaches safe driving techniques to help keep you and your loved ones safe on the road. Insurance discounts for those 55+ after completing the eight hour introductory course. A four hour refresher course is required every three years. Use your AARP member number for a discounted registration rate.

**Registration deadline:** three days before class

## FOUR HOUR REFRESHER CLASSES

AGE	DATE & TIME	COST	ACTIVITY #
55+	Tues, March 15 5 – 9 pm	\$33; \$26 AARP member	250201-01
	Thurs, March 24 9 am – 1 pm	\$33; \$26 AARP member	250201-02
	Tues, April 5 5 – 9 pm	\$33; \$26 AARP member	250201-03
	Wed, April 13 9 am – 1 pm	\$33; \$26 AARP member	250201-04
	Tues, May 3 9 am – 1 pm	\$33; \$26 AARP member	350201-01
	Tues, May 24 5 – 9 pm	\$33; \$26 AARP member	350201-02

## EIGHT HOUR CLASSES

AGE	DATE & TIME	COST	ACTIVITY #
55+	Mon & Tues March 7 & 8: 5 – 9 pm	\$33; \$26 AARP member	250204-01
	Tues & Wed April 26 & 27: 9 am - 1 pm	\$33; \$26 AARP member	250204-02
	Tues & Wed May 10 & 11: 9 am - 1 pm	\$33; \$26 AARP member	350203-01
	Tues & Wed June 7 & 8: 9 am - 1 pm	\$33; \$26 AARP member	350203-02







# Adult Programs

## SMARTPHONE WORKSHOP I

Become more familiar with your smart phone. Learn to use various functions including: calling, text messaging, camera, Wi-Fi, apps and accessories. There will be time to ask questions.

Registration deadline: four days before class

AGE	DATE & TIME	COST	ACTIVITY #
18+	Tues, March 8 1 - 3 pm	\$40; \$36 SV Res	200202-01
	Tues, April 15 1 - 3 pm	\$40; \$36 SV Res	200202-02
	Tues, May 10 1 - 3 pm	\$40; \$36 SV Res	200202-03

## APP AND SOCIAL MEDIA INSTRUCTION VIRTUAL CLASSES

A recording of class will be sent to all registered students. You can attend at the time listed, watch, or re-watch later. Follow-up support included.

Would you like to utilize your smart phone more and learn how to use social media? These classes will teach basics and answer your questions. The virtual format offers flexibility. If you need help, the instructor will call and talk you before the class. Classes are taught live through Zoom. Registered students can re-watch.

Registration deadline: one week before class

TOPIC	DATE & TIME	COST	ACTIVITY #
Ease into Social Media	Tues, May 3 Noon – 1 pm	\$24; \$22 SV Res	200210-01
Help with Facebook; get answers	Wed, May 4 Noon – 1 pm	\$24; \$22 SV Res	200210-02
Social Media for Business	Tues, May 10 Noon – 1 pm	\$24; \$22 SV Res	200210-03
Podcasts for beginners	Wed, May 11 Noon – 1 pm	\$24; \$22 SV Res	200210-04
Help with Snapchat	Tues, May 17 Noon – 1 pm	\$24; \$22 SV Res	200210-05
Parent Guide to TikTok	Wed, May 18 Noon – 1 pm	\$24; \$22 SV Res	200210-06
Twitter for beginners	Tues, May 24 Noon – 1 pm	\$24; \$22 SV Res	200210-07
How to Use Uber for Transportation	Wed, May 25 Noon – 1 pm	\$24; \$22 SV Res	200210-08
Cell Phones & Parenting	Tues, May 31 Noon – 1 pm	\$24; \$22 SV Res	200210-08
How to create your own YouTube Channel	Wed, June 1 Noon – 1 pm	\$24; \$22 SV Res	300210-01
What are NFTs?	Tues, June 7 Noon – 1 pm	\$24; \$22 SV Res	300210-02

## SMARTPHONE WORKSHOP II

A continuation of Smartphone workshop I

Registration deadline: four days before class

AGE	DATE & TIME	COST	ACTIVITY #
18+	Tues, March 15: 1 - 3 pm	\$40; \$36 SV Res	200204-01
	Tues, April 10 1 - 3 pm	\$40; \$36 SV Res	200204-02
	Tues, May 17 1 - 3 pm	\$40; \$36 SV Res	200204-03

## JUMPSTART YOUR FUTURE – GETTING READY TO GRADUATE

Calling older teens, young adults, and their parents for an inspiring evening with author Ben Lampron. Ben will discuss his book which encourages young people to build financial stability, wealth, and create meaningful relationships. Help the young people in your life gain financial confidence and ability to dominate that first job.

Your registration includes one copy of his book. Ben is not a financial advisor.

AGE	DATE & TIME	COST	ACTIVITY #
15+	Thurs, April 21 7 – 9 pm	\$30; \$28 SV Res	200111-01

(additional family member free)



# Adult Programs



## PLANNING FOR SOCIAL SECURITY AND LONG TERM CARE

with Shoreview resident Johnathan Rice (aka JR), RICP & CRPC

Johnathan (JR) has been educating people about preparing and helping people plan their retirements for over 20 years and is a partner with Diversified Wealth Management.

### Planning for Long Term Care

70% of 65 year-olds will need long-term care (LTC) during their lives. Learn the many aspects to consider when planning your health and wealth if you need LTC including the Minnesota Partnership Long-Term Care program.

### Social Security Optimization

There are over 700 different social security filing strategies. Three out of four people unknowingly take a reduction in their SS income. Familiarize yourself with the multiple filing strategies so you make the best decision when filing.

### Retirement roadblocks

The road to financial freedom in retirement may have twists and turns get the knowledge now that straightens the path. What is your financial risk?

- Are you confident that your savings will withstand a 25+ year retirement?
- What is your plan to combat inflation?
- Is your retirement income dependent on market performance?
- How much of your retirement savings can you take each year without running out of money?
- Are your Social Security benefits optimized for you and your spouse?
- Do you have strategies for rising healthcare costs and potential long-term care needs?
- Do you have a tax allocation strategy to help lessen tax impacts during retirement?

Securities offered through Securities America Inc., member FINRA/SIPC and advisory services offered through Securities America Advisors, Inc., Diversified Wealth Management and the Securities America Companies are independently owned.

**Registration deadline:** One week before class

AGE	DATE	TOPIC	COST	ACTIVITY #
35+	Tues, March 29: noon – 1 pm	Long term care	\$4; \$3 SV Res	200141-01
35+	Tues, March 29: 5:30 – 6:30 pm	Social security optimization	\$4; \$3 SV Res	200141-02
35+	Thurs, March 31: noon – 1 pm	Social security optimization	\$4; \$3 SV Res	200142-01
35+	Thurs, March 31: 5:30 – 6:30 pm	Retirement roadblocks	\$4; \$3 SV Res	200142-02



## MALL OF AMERICA SEA LIFE AND SHOPPING

We'll take a wheelchair/walker friendly mini bus to Sea Life at the Mall of America. Our friends at the New Brighton Community Center will also be joining. You can take your time on a self-guided tour deep into the sea at this amazing aquarium. See everything from starfish to sharks as you travel through the 300 foot underwater tunnel. We'll have time to explore over 11 breath taking exhibits. Spend all of your time at the aquarium or take some of your time to go shopping.

**Registration deadline:** April 3

AGE	DATE & TIME	COST	ACTIVITY #
18+	Tues, April 19 9:45 am – 1:40 pm	\$43; \$39 SV Res	200600-01







## LEARN TO PAINT

Learn the basic technique of one-stroke painting using acrylic paints. Class includes step-by-step instruction and painting supplies. Classes are taught by Jill Mason from Painting with Jill. See page 45 for Jill's grandparent and me painting class.

**Registration deadline:** Five days before class.

AGE	DATE	TIME	THEME	COST	ACTIVITY #
18+	Mon, March 7	1 - 4 pm	Shades of green	\$48; \$44 SV Res	200400-01
18+	Mon, April 4	1 - 4 pm	Thinking spring	\$48; \$44 SV Res	200400-02
18+	Mon, May 9	1 - 4 pm	Summer vibes	\$48; \$44 SV Res	200400-03

## MIXED MEDIA ART CLASSES

Explore texture, color and creativity as you use epoxy resin, alcohol inks, and other media to create unique pieces of colorful art.

**Registration deadline:** One week before class

AGE	DATE	TIME	THEME	COST	ACTIVITY #
18+	Thurs, March 10	6 - 8 pm	Wood tray with handles	\$64; \$58 SV Res	200410-01
18+	Thurs, April 7	6 - 8 pm	Spring door hanger	\$64; \$58 SV Res	200410-02
18+	Thurs, May 12	6 - 8 pm	Painted herb pot trio	\$71; \$65 SV Res	200410-03



## LEARN TO KNIT/CROCHET

Learn basic techniques to complete a small project or two. Bring a small scissors and zippered cloth bag. Only bring a small scissors and cloth bag; the instructor will provide other knitting materials for \$10 the first night.

**Registration deadline:** One week before class

AGE	DATE	TIME	THEME	COST	ACTIVITY #
18+	Mon April 11 - May 16	9 - 11 am	Learn to knit	\$40 \$35 SV Res	200450-01
18+	Wed April 13 - May 18	1 - 3 pm	Learn to crochet	\$40 \$35 SV Res	200451-02



## TEA IN THE GARDENS AND PRIVATE SHOPPING AT HUMMINGBIRD FLORAL

Enjoy an afternoon under the shady trees for tea, scones and biscuits. Socialize during a private shopping event with 10% off your purchase and receive a special gift. Meet at Hummingbird Floral, 4001 Rice Street. In case of bad weather the tea will be moved to the community center.

**Registration deadline:** June 1

AGE	DATE & TIME	COST	ACTIVITY #
18+	Wed, June 8 1 - 3 pm	\$22; \$20 SV Res	300600-01



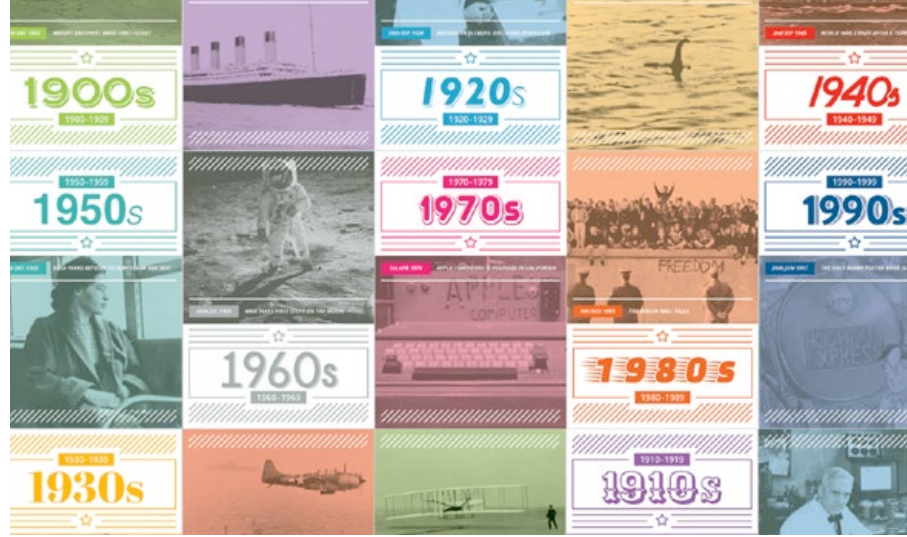
# Adult Programs



## BETWEEN THE LINES: HISTORY SEMINARS WITH KATHY SIMMER

Explore fascinating topics from America's past. Understand why something happened and how it changed our path, along with the juicy details usually left out of textbooks. Kathy is a retired teacher, a curriculum consultant, and licensed librarian.

**Registration deadline:** Five days before class



## THE DOCTORS MAYO: HISTORY OF THE MAYO CLINIC

Discover the connection between malaria, a tornado and the location the world renowned Mayo Clinic. Whose skeleton was kept in an office and who was a prankster? Why did the Ku Klux Klan vilify the Mayos? Who were some of the famous patients? Join us and find out!

AGE	DATE & TIME	COST	ACTIVITY #
18+	Thurs, March 24 1 - 3 pm	\$19; \$17 SV Res	200110-01

## REMEMBER THE ALAMO!

Unlike today, it was American immigrants pouring over the border into Mexican territory. Learn about the larger than life personalities of General Santa Anna, Sam Houston, Jim Bowie and Davy Crockett. You'll even learn how a "lady of the evening" and the inventor of chewing gum were connected to the Battle of the Alamo.

AGE	DATE & TIME	COST	ACTIVITY #
18+	Thurs, April 21 1 - 3 pm	\$19; \$17 SV Res	200110-02

## THE GOLDEN DOOR: A HISTORY OF U.S. IMMIGRATION

In 1751, Ben Franklin urged an end to German immigration to Pennsylvania using alarming derogatory language. It has often been a contentious topic. We cover the waves of immigration over the years, from your own ancestors to more recent arrivals. Learn about the history of immigration laws, enforcement efforts, and the expectations and realities faced by the newcomers. You'll understand the naturalization process and receive a copy of the test required for citizenship. Immigration is a hot topic, and you'll enjoy knowing the facts.

AGE	DATE & TIME	COST	ACTIVITY #
18+	Thurs, May 19 1 - 3 pm	\$19; \$17 SV Res	200110-03

## TRAVEL SHOW WITH JEANIE'S JOURNEYS

Join Jeanie from Jeanie's Journeys to learn about her amazingly affordable adventures. All tour pricing include airfare. Some upcoming trips include: Alaskan Cruise, Iceland for \$1998, Scotland for \$2499

Learn about costs for tours to Branson, NYC, Scandinavia, Door County, and The Black Hills.

No registration required.

AGE	DATE & TIME	COST
18+	Thurs, April 14: 11 -11:30 am	Free

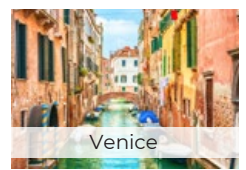
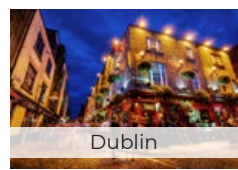


### 55+ HOUSING FAIR

**Thursday, April 28, 1 - 3 pm**  
Shoreview Community Center

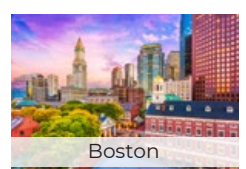
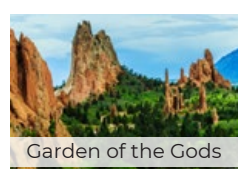
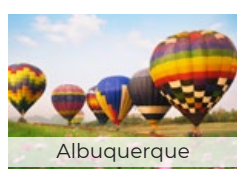
**Are you or a loved one moving?**

**Visit representatives from various senior living developments, in-home care and transitional options. Free to attend!**



## Landmark Tours - Free travel show

Thursday, May 12 at 1 pm





# Swim Lessons



## SHOREVIEW PARKS & RECREATION SWIM LESSONS

We use a fun and imaginative approach to help students create a lifelong love of swimming. Students will learn new skills and build on previously learned skills through group or private instruction. Our instructors participate in ongoing training sessions and are selected based on their desire to teach, enthusiasm, and swimming ability. Parent - instructor communication is vital to the success of each swimmer. Our mission is to provide an inclusive program for all.

### A NOTE ABOUT SWIM LESSONS

- Swim lessons are not canceled if Mounds View School District cancels after school activities due to weather.
- We do not provide make-up lessons.
- Group classes with fewer than three registered participants will be canceled.
- Students cannot swim before or after lessons.
- Students should use the bathroom and shower before entering the pool area. Staff aren't allowed to take students to the bathroom.
- If your child needs a quieter environment to learn look at our Tuesday, Thursday, Saturday, and Sunday lessons.
- Children ages 4 and under may use any locker room. Children ages 5 and older must use the same sex locker room or family locker room.
- The pool water temperature is kept between 83 and 84 degrees.
- First day instructions will be emailed to participants before the class start date

## FREE SWIM LESSON CHECKS

Not sure of what level to register your child for? Reserve your time at [shoreviewmn.gov](http://shoreviewmn.gov)

If your child has been away for more than three months we recommend repeating the previous level.

Sunday, March 6, 10:30 - 11:30 am

Wednesday, May 11, 5:30 - 6:30 pm

### PRIVATE LESSONS (PR)

Ages 3 - Adult

Private and semi-private lessons offer one-on-one training so you're able to learn at your own pace. Lessons are 30 minutes and available at set times.

NUMBER OF LESSONS	COST	COST SV RES
6	\$144	\$131

### SEMI-PRIVATE LESSONS

You must have two people at the same ability for a semi-private lesson

Register with the parks & recreation office in person or call 651-490-4750

Rate listed per person

NUMBER OF LESSONS	COST	COST SV RES
6	\$108	\$98

### CUSTOM PRIVATE INSTRUCTION

Flexible scheduling with three months to complete after first lesson starts

Option to reschedule with advance notification

For more information contact the aquatic coordinator at 651-490-4766.

Rate listed per person

NUMBER OF LESSONS	COST	COST SV RES
8 lessons	\$235	\$214
6 lessons	\$193	\$175
4 lessons	\$128	\$117

### CUSTOM SEMI-PRIVATE LESSONS:

NUMBER OF LESSONS	COST	COST SV RES
8 lessons	\$161	\$146
6 lessons	\$130	\$118
4 lessons	\$95	\$86



# Swim Lessons



## GROUP LESSONS

Group lessons will have one instructor to a maximum of four students.

Group lessons are 40 minutes unless noted.

Parent/child lessons are 30 minutes.

NUMBER OF LESSONS	COST	COST SV RES
6 lessons	\$89	\$81



## PARENT/CHILD LESSONS

### PARENT/CHILD (PC 1)

**AGES 9 MONTHS – 2½ YEARS**

- Enter/exit water with assistance
- Blow bubbles & submerge head
- Front/back float with guardian & instructor
- One adult must accompany each child in the water.

### PARENT/CHILD 2 (PC 2)

**AGES 2 - 3½**

A parent accompanies their child in the water for the first few weeks and gradually reduces participation

- Enter/exit water independently
- Blow bubbles & submerge head
- Front/back float with instructor
- Front/back glides with assistance
- Front/back flutter kicking with instructor



## BEGINNER LESSONS

### BEGINNER 1 (B1)

**AGES 2 ½ - 4**

- Independent entry/exit
- Front/back floats with assistance – 3 seconds
- Front/back glides with assistance
- Front/back flutter kicking with support
- Front crawl arms with face in the water

### BEGINNER 2 (B2)

**AGES 3 - 5 OR PASSED B1**

- Independent front/back floats - 5 seconds
- Front/back glides
- Front/back flutter kicking
- Front crawl arms with flutter kick
- Rhythmic breathing

### BEGINNER 3 (B3)

**AGES 3 - 5 OR PASSED B2**

- Independent front/back floats - 8 seconds
- Independent front/back glides with flutter kicking
- Front/back flutter kicking - 8 yards
- Front crawl with rhythmic breathing with assistance

### BEGINNER 4 (B4)

**AGES 4 - 6**

- Independent front/back floats – 10 seconds
- Independent front glide into front crawl
- Front/back flutter kicking – ½ length
- Front crawl with rhythmic breathing with assistance – 8 yards

### YOUTH BEGINNER (YB)

**AGES 6 & OLDER**

New to swim lessons or haven't been in lessons for several years

- Independent front/back floats – 10 seconds
- Independent front/back glides with flutter kick
- Front/back flutter kicking – ½ length
- Front crawl arms with rhythmic breathing







## INTERMEDIATE LESSONS

### INTERMEDIATE 1 (I1)

#### AGES 5 - 7

- Front/back flutter kicking – ½ length
- Independent back glide with flutter kicking
- Flutter kick with rhythmic breathing – ½ length
- Front crawl with rhythmic breathing – ½ length

### INTERMEDIATE 2 (I2)

#### AGES 5 AND OLDER

- Front glide into front crawl – 8 yards
- Back glide into back crawl – 8 yards
- Front/back flutter kicking – 25 yards
- Back crawl with assistance – 8 yards
- Elementary backstroke kick – ½ length
- Tread water

### INTERMEDIATE 3 (I3)

#### AGES 5½ AND OLDER

- Front crawl with rhythmic breathing – 25 yards
- Back crawl – ½ length
- Elementary backstroke – ½ length
- Tread water

### INTERMEDIATE 4 (I4)

#### AGES 5½ AND OLDER

- Front crawl with open turn – 50 yards
- Back crawl – 25 yards
- Elementary backstroke – 25 yards
- Open turn – front
- Whip kick – 25 yards

# Swim Lessons



## ADVANCED LESSONS



### ADVANCE 1 (A1)

#### AGES 6 AND OLDER

- Front crawl with flip turns – 75 yards
- Back crawl with open turns – 50 yards
- Elementary backstroke – 25 yards
- Breaststroke – 25 yards
- Breaststroke whip kick
- Flip turns

### ADVANCE 2 (A2)

#### AGES 6 AND OLDER

- Front crawl with flip turns – 100 yards
- Back crawl w/open turns – 75 yards
- Breaststroke w/underwater pull out – 50 yards
- Breaststroke underwater pull out
- Dolphin kick – 25 yards
- Scissors kick – 25 yards

### ADVANCE 3 (A3)

#### AGES 6 AND OLDER

- Front crawl with flip turns – 150 yards
- Back crawl with open turns – 100 yards
- Breaststroke with underwater pull out – 75 yards
- Butterfly – ½ length
- Sidestroke – 25 yards



# Swim Lessons



VISIT [SHOREVIEWMN.GOV/PARKS-REC](http://SHOREVIEWMN.GOV/PARKS-REC) FOR FULL SWIM LESSON SCHEDULE

## Weekly classes: one day a week for six weeks

DAY	DATE	TIME
Monday	March 21- April 25	5 - 8 pm
Tuesday	March 22 - April 26	5 - 8 pm
Wednesday	March 23 - April 27	5 - 8 pm
Thursday	March 24 - April 28	5 - 8 pm
Saturday	April 9 - May 14	8:30 - 11:40 am
Sunday	April 24 - June 5 No class: May 29	8:30 - 11:40 am 6:15 - 7:45 pm

## Bi-weekly classes: two days a week for three weeks

DAY	DATE	TIME
Mon/Wed	May 2 - 18	5 - 8 pm
Tues/Thurs	May 3 - 19	5 - 8 pm

### KEY LOG ROLLING INTRO

Challenge yourself and others in this fun for the whole family, whole core workout class. Trained staff will be there to help you learn the log rolling basics and balance to help get you started.

AGES	DATE	TIME	COST	ACTIVITY #
Families	April 24 - June 5 No class: May 29	6:30 - 7:30 pm	\$82; \$75 SV Res	210105-01
	Wed, Apr 20	6:30 - 7:30 pm	\$30	210105-05
	Wed, May 11	6:30 - 7:30 pm	\$30	210105-06

## Lesson Rates

Group lessons	6 lessons	\$89; \$81 SV Res
Private lessons	6 lessons	\$144; \$131 SV Res
Semi-private*	6 lessons	\$108; \$98 SV Res

\*Two participants of equal ability







## BSA SWIMMING MERIT BADGE

Scouts learn about:

- Safety when swimming and diving
- How swimming can contribute to overall fitness and health
- Gain some basic competitive swimming skills

Scouts must provide the Swimming Merit Badge pamphlet and certification card.

**Registration deadline:** One week before class

**Location:** Chippewa Middle School pool

AGES	DATE & TIME	COST	ACTIVITY #
11+	Sat, April 23 8 - 11 am	\$70; \$64 SV Res	230301-01

## BSA LIFESAVING MERIT BADGE

Scouts learn how to:

- Assist those involved in water accident
- Knowledge in rescue techniques
- Perform and judge when and how to act in an emergency

Scout must provide the Lifesaving Merit Badge pamphlet and certification card.

**Prerequisite:** completed BSA swimming merit badge

**Registration deadline:** One week before class

**Location:** Chippewa Middle School pool

AGES	DATE & TIME	COST	ACTIVITY #
11+	Sat, April 23 8 - 11:30 am	\$73; \$66 SV Res	230301-02

## BSA FIRST AID MERIT BADGE

Scouts learn how to:

- Care for an injured or ill person until professional medical care is available
- Provide immediate care and help someone who's hurt or ill
- Help prevent infection and serious blood loss

Scouts must provide the First Aid Merit Badge pamphlet and certification card.

**Registration deadline:** One week before class

AGES	DATE & TIME	COST	ACTIVITY #
11+	Tues, April 5 4 - 7:30 pm	\$73; \$66 SV Res	230301-03

# Aquatic Programs

## MERMAID ADVENTURES: INTRODUCTION

Participants will learn how to:

- Swim with your mermaid tail
- Swim like a mermaid and perfect your dolphin-kick technique

**Prerequisites:**

- Front and back float independently - 10 seconds
- Roll from front to back and back to front
- Front crawl with rhythmic breathing - 8 yards

**Registration deadline: one week before class**

AGES	DATE & TIME	COST	ACTIVITY #
7-9	Sun, April 10: 10 - 11:30 am	\$41	230302-01
9-12	Tues, May 10, 5 - 6:30 pm	\$41	230302-02

Mermaid tails and monofins provided.



## JR. LIFEGUARD

Participants interested in beginning their lifeguarding skills will learn about:

- Recognizing a swimmer in distress
- Rescues for an active swimmer
- Rule enforcement and customer service
- First aid certification

**Prerequisite:**

- Front crawl or breaststroke 50 yards
- Retrieve a 10 lb brick from pool depth of 4 feet
- Swim under water for 10 feet

**Registration deadline:** One week before class

AGES	DATE & TIME	COST	ACTIVITY #
13 - 14	Sun, April 24 - May 15: 5 - 7 pm & May 22: 4 - 6 pm	\$50; \$45 SV Res	250306-01
13 - 14	Mon - Fri, July 11-15 10 am - noon	\$50; \$45 SV Res	350306-01





# Kids Corner Preschool



## A TO Z: FULL DAY PRESCHOOL PROGRAM:

- Structured learning 9:30 am - 3:30 pm
- Skill work: letters, numbers, colors, shapes, printing, counting, beginning math, and more.
- Weekly nature based play, music, Spanish, physical education, swimming and library visits.
- Lunch not provided – students need a bag lunch and drink
- Must be toilet-trained
- Must be three by June 1, 2022

AGES	DATE & TIME	WEEKLY FEE	ACTIVITY #
3 - 5	Mon – Fri 7 am - 5:30 pm	\$280; \$255 SV Res	540490-01
3 - 5	Mon, Wed, Fri 7 am - 5:30 pm	\$194; \$176 SV Res	540490-02
3 - 5	Tues & Thurs 7 am - 5:30 pm	\$154; \$140 SV Res	540490-03

## KIDS CORNER PRESCHOOL

September 12, 2022 - May 25, 2023

A \$75 non-refundable fee is required at the time of registration.

### Registration open now!

Kids Corner offers students fun and educational experiences that help get them ready for kindergarten.

Located inside the community center, students have an opportunity to play and explore indoor and outdoor playgrounds, the gymnasium, and outdoor nature areas. Outdoor nature and science programming provides a unique learning experience you won't find at most preschools.

Daily snack included.

Calendar follows Mounds View School District 621 non-school days.



## SPECIALTY CLASSES

- Hands-on science education
- Nature based play
- Pair this class with one of our two day classes for additional days of learning & fun
- Must be 3 by September 1, 2022

AGES	CLASS	DATE & TIME	MONTHLY FEE	ACTIVITY #
3 - 5	Investigators	Wed 9:30 am - noon	\$88; \$80 SV Res	540495-01





# Kids Corner Preschool



## 2½ - 3 YEARS OLD

- Early learning: colors, shapes, patterns, days of the week and more
- Great first-time classroom experience
- Socialization skills in large group
- Monday & Friday curriculum varies
- Must be 3 by May 31, 2023

CLASS	DATE & TIME	MONTHLY FEE	ACTIVITY #
Monday Friday	Mon 9:30 – 11 am	\$87; \$79 SV Res	540491-01
Friday Friday	Fri 9:30 – 11 am	\$70; \$64 SV Res	540491-02

## 3 - 4 YEARS OLD

- Early learning: letters, numbers, colors, shapes, writing skills, social skills
- Weekly large motor skills/physical education time included
- Must be 3 by September 1, 2022

CLASS	DATE & TIME	MONTHLY FEE	ACTIVITY #
ABCs & 123s	Tues & Thurs 9:30 am - noon	\$170; \$155 SV Res	540492-01

## 3 - 5 YEARS OLD

- Skill work: letters, numbers, colors, shapes, printing, counting, beginning math, and more.
- Weekly large motor skills/physical education time included.
- Must be 3 by September 1, 2022

CLASS	DATE & TIME	MONTHLY FEE	ACTIVITY #
Stepping Stones	Mon, Wed, Fri 9:30 am – noon	\$239; \$218 SV Res	540494-01

## 4 - 5 YEARS OLD

- Kindergarten readiness
- Skill work: letter recognition, printing, counting, early math, cutting and scissors
- Weekly large motor skills/physical education time included
- Must be 4 by September 1, 2022

CLASS	DATE & TIME	MONTHLY FEE	ACTIVITY #
Alpha Kids	Tues & Thurs 9:30 am –12:30 pm	\$188; \$170 SV Res	540493-01





## BAMBOO BAY EGG HUNT

The bunny will be hiding eggs for you to find in the Bamboo Bay pool area. Each child will be given an Easter bag of goodies. After the egg hunt is completed participants will be able to swim in Bamboo Bay. Don't forget your swim suit. No walk ins.

Deadline to register: March 28

AGES	DATE	TIME	FEE	ACTIVITY
7 & under	Sun, April 3	9 - 11 am	Youth \$10 Adults \$5	230119-01

## EGG HUNT

Join the bunny in an old-fashioned eggciting hunt for prized-filled eggs! Each participant will be given a bag for hunting! Space is limited. The Shoreview egg hunt is held outdoors. Please dress for the weather. Tickets must be purchased for each individual participating in the egg hunt. No walk-ins.

Registration deadline: April 6

AGES	DATE	TIME	FEE
10 & under	Sat, April 9	10 am check-in at the pavilion 10:15 am egg hunt	\$10 per person ticket

## EASTER PEEP PARTY

Hop on over to class to create an Easter themed art project. You and your child will get to play with some clay as you create a larger than life sculpture of a marshmallow Peep®. Come and create right along with your child. Children must be accompanied by a caregiver. Class taught by KidCreate Studio.

Registration deadline: April 4

AGES	DATE	TIME	FEE	ACTIVITY
18 months – 6 years	Tues, April 12	9:30 - 10:30 am	\$23, \$21 SV Res	270270-01







### INVEST IN YOUR NEIGHBORHOOD!

Celebrate Earth Day by gathering with your neighbors and cleaning up your community! You select the date, time and park location and we will provide the supplies!

What we supply: Garbage and yard waste bags

What the neighborhood supplies:Volunteers and yard tools

Visit our website for more program and registration details.

# EARTH DAY

Select any date anytime between  
**April 17-24**



## Special Events



### SPRING CUPCAKE ART CLASS

Have you ever used fondant to decorate cupcakes? Fondant is used to create a variety of designs on cupcakes. Learn how to color, roll, cut, and sculpt fondant into different shapes and sizes. Have fun attaching your decorative fondant to create festive cupcakes for any occasion! Class taught by Artistic Moments!

Registration deadline: May 6

AGES	DATE	TIME	FEE	ACTIVITY #
5 - 12	Sat May 14	10 am - noon	\$29, \$27 SV Res	270211-01

### SPRING ROYAL TEA PARTY

Your afternoon will consist of crafts, a special appearance by a princess, storytelling, refreshments, and lots of fun. Come in your favorite princess look and don't forget your camera! Children must be accompanied by an adult. Tickets must be purchased for each individual participating in the event. No walk-ins.

Registration deadline: May 11

AGES	DATE	TIME	FEE
10 & under	Sun, May 15	3 - 4:30pm	\$10 per person Ticket





## WISH UPON A BALLET

This program incorporates popular children's stories as well as ballet stories to create a dance class that is more than ballet steps. Students will need ballet shoes and comfortable clothes they can move around in. Classes taught by Mayer Arts.

**Registration deadline:** March 14 No class April 17 and May 8

AGES	DATE	TIME	COST	ACTIVITY #
3 - 6	Sun, March 20 – May 22	2 – 2:45 pm	\$95; \$89 SV Res	270202-01

## WISH UPON A BALLET & TAP

This program offers the same curriculum as wish upon a ballet with the added fun of tap dancing! Tap provides the development of rhythm and motor skills. Ballet and tap shoes are required. Classes taught by Mayer Arts.

**Registration deadline:** March 14 No class April 17 and May 8

AGES	DATE	TIME	COST	ACTIVITY #
4 - 7	Sun, March 20 – May 22	2:45 – 3:30 pm	\$95; \$89 SV Res	270204-01

## HIP HOP DANCE PARTY

Get into the groove! Learn upbeat styles such as jazz and hip hop and move to your favorite songs. Students will also learn warm-ups such as stretching, isolations and across the floor exercise! Classes taught by Mayer Arts.

**Registration deadline:** March 14 No class April 17 and May 8

AGES	DATE	TIME	COST	ACTIVITY #
5 - 10	Sun, March 20 – May 22	3:30 – 4:15 pm	\$95; \$89 SV Res	270205-01

## MUSIC TOGETHER

Sing, dance, play, and learn with award-winning music and movement classes for infants, toddlers, preschoolers, and the adults who love them. The rich music environment in class will help your child grow into a confident, lifelong music maker. Infants (born after May 10, 2021) attend at no cost with a paid sibling.

### DEMO

**Registration deadline:** March 15

AGES	DATE	TIME	COST	ACTIVITY #
0 – 5	Tues, March 22	9:15 – 10:15 am	Free	270212-01

**Registration deadline:** March 21

AGES	DATE & TIME	COST	ACTIVITY #
0 – 5	Mon, March 28 – June 6 9:15 – 10 am	\$189; \$104 add'l sibling	270213-01
0 – 5	Mon, March 28 – June 6 10:15 – 11 am	\$189; \$104 add'l sibling	270213-02

**Registration deadline:** March 21

AGES	DATE & TIME	COST	ACTIVITY #
0 – 5	Tues, March 29 – May 31: 9:15 – 10 am	\$189; \$104 add'l sibling	270214-01
0 – 5	Tues, March 29 – May 31: 10:15 – 11 am	\$189; \$104 add'l sibling	270214-02

**Registration deadline:** March 21

AGES	DATE & TIME	COST	ACTIVITY #
0 – 5	Sun, March 27 – June 5 4:30 – 5:15 pm	\$189; \$104 add'l sibling	270215-01
0 – 5	Sun, March 27 – June 5 5:30 – 6:15 pm	\$189; \$104 add'l sibling	270215-02







# Youth Programs

## CHESS SCHOOL

Twin Cities Chess club provides an environment for children of all skill levels to learn and enjoy the game of chess. Students are grouped together according to their age and ability. Classes will be taught by Igor Rybakov, the USCF-rated tournament chess player, named best chess coach in Minnesota.

**Registration deadline:** March 25

AGES	DATE	TIME	COST	ACTIVITY #
5 - 18	Sat April 2 – May 7	10 – 11 am	\$90	270216-01



## GRANDPARENT\* AND ME - LEARN TO PAINT

Enjoy a fun morning of painting with Paint by Jill. A young person along with their grandparent, parent or another adult will create a painting together. Children of all ages welcome but six and older is recommended. See page 33 for adult learn to paint classes.

**Registration deadline:** five days before class

AGES	CLASS	DATE & TIME	COST	ACTIVITY #
6+	Green Shenanigans	Sat, March 5 10 am - noon	\$38; \$35 SV Res	200440-01
6+	Hopping into spring	Sat, April 2 10 am - noon	\$38; \$35 SV Res	200440-02
6+	Seasons in the sun	Sat, May 7 10 am - noon	\$38; \$35 SV Res	200440-03

# Hiring Event

Shoreview Community Center

## Walk-in interviews for:

Summer discovery instructors,  
Lifeguards, Swim instructors,  
Waterslide attendants,  
Adventure Quest instructors

Save time & apply online at  
[shoreviewmn.gov/jobs](http://shoreviewmn.gov/jobs)

Sun, April 10 | 2 - 4pm\*

Tues, April 19 | 6 - 8 pm

Thurs, April 21 | 5 - 7 pm\*

\* Interviews for lifeguards, swim instructors, and waterslide attendants will only be held on these dates.



# Youth Programs



## PARENT & CHILD CREATE-MOTHER'S DAY

Mother's Day is just around the corner. What better way to celebrate than creating masterpieces with your child? Prepare for an evening filled with fun! You and your child will follow easy step-by-step instructions as you create matching floral paintings. Each parent and child will create their own masterpiece on a real canvas board.

Class taught by KidCreate Studio.

Registration deadline: April 25

AGES	DATE & TIME	COST	ACTIVITY #
5-12	Tues, May 3: 6:30 - 8 pm	\$51; \$47 SV Res	270272-01

## EVERYDAY HERO

Firefighters are brave and strong. They fight fires and keep us safe. They're everyday heroes! Plus, they drive really awesome trucks! Join us as we create a cool painting of a fire truck that your little firefighter fanatic will love. Children must be accompanied by a caregiver. Class taught by KidCreate Studio.

Registration deadline: July 8

Location: Shamrock Park

AGES	DATE	TIME	COST	ACTIVITY #
18 months – 6 years	Fri, July 15	9:30 – 10:30 am	\$24; \$22 SV Res	370603-01



## DINO DISCOVERY

Tyrannosaurs Rex, Triceratops and Diplodocus ... is your child dazzled by dinosaurs? This is your child's chance to have a playdate with a dino and create a fantastic work of dinosaur art. Your young artists will create their own diorama complete with a toy dinosaur! Children must be accompanied by a caregiver. Class taught by KidCreate Studio.

Registration deadline: August 12

Location: Shamrock Park

AGES	DATE	TIME	COST	ACTIVITY #
18 months – 6 years	Fri, Aug 19	9:30 – 10:30 am	\$24; \$22 SV Res	370604-01

## BABYSITTING 101

This class will cover:

- First aid
- Crafts, toys & childproofing
- Sitter safety
- Nutrition

Registration deadline: Four days before class

AGES	DATE	COST	ACTIVITY #
10 – 13	Sat, April 23 8 am – noon	\$69; \$63 SV Res	250101-01
10 – 13	Sun, May 15 1 – 5 pm	\$69; \$63 SV Res	250101-02

## BABYSITTING FIRST AID

Students interested in continuing their babysitting skills will learn about:

- Recognizing an emergency
- When to call for help
- Care of injuries and allergic reactions
- How to help a choking child/infant

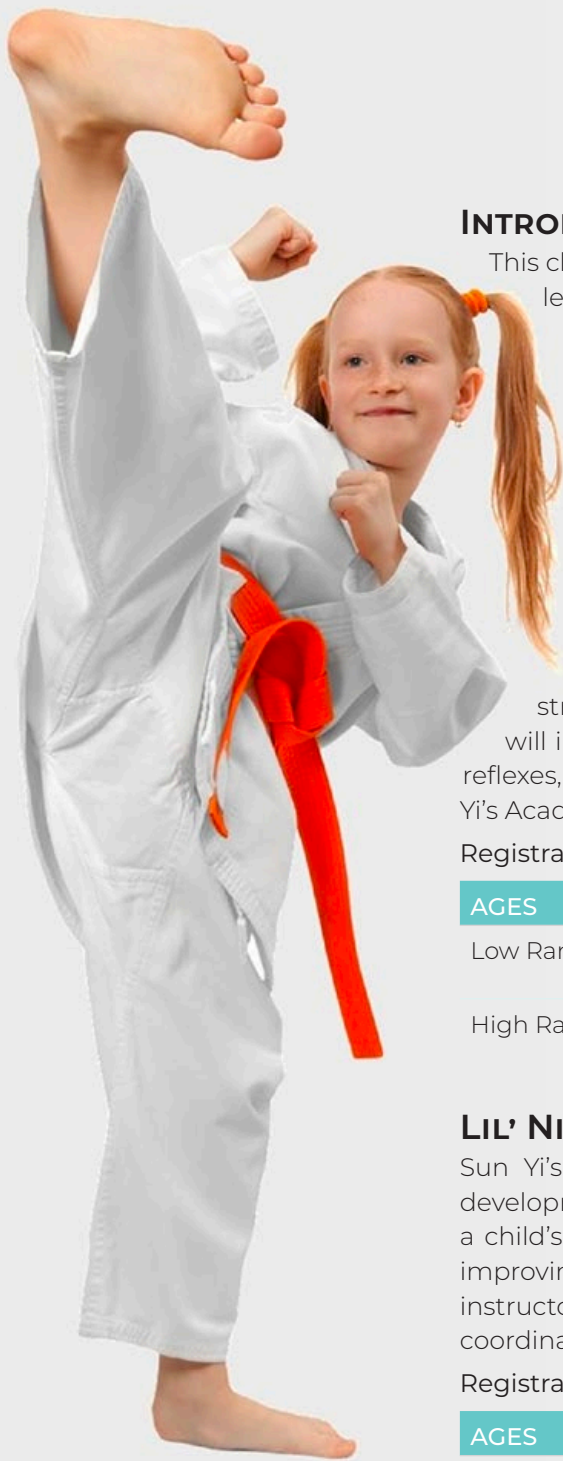
Students will also put together a small first aid kit

Registration deadline: Four days before class

AGES	DATE	COST	ACTIVITY #
10 – 13	Sat, April 9, 8:30 – 11:30 am	\$47; \$43 SV Res	250102-01







## INTRODUCTION TO TAE KWON DO

This class is for students new to Sun Yi's Academy of Tae Kwon Do. Students will learn the fundamental skills of Tae Kwon Do. No uniform is needed for this class. Wear comfortable clothing. Classes taught by Pam Meyers of Sun Yi's Academy of Traditional Tae Kwon Do.

Registration deadline: Four days before class

AGES	DATE	TIME	COST	ACTIVITY #
7+	Thurs April 7 – May 26	5:45 – 6:15 pm	\$68; \$60 SV Res	210233-01

## TAE KWON DO

Tae Kwon Do is unlike other martial arts programs, incorporating physical and mental elements into each class. Classes teach kicking, punching, striking, and blocking techniques through traditional Tae Kwon Do. Students will improve stamina, strength, speed, agility, coordination, flexibility, balance, reflexes, concentration, and confidence. Classes are taught by Pam Meyers of Sun Yi's Academy of Traditional Tae Kwon Do.

Registration deadline: Four days before class

AGES	DATE	TIME	COST	ACTIVITY #
Low Ranks Ages 7+	Tues & Thurs April 5 – May 26	6:15 - 7pm	\$136; \$120 SV Res	210231-01
High Ranks Ages 7+	Tues & Thurs April 5 – May 26	7 – 8pm	\$136; \$120 SV Res	210231-02

## LIL' NINJAS

Sun Yi's Academy Lil' Ninjas is specifically designed to enhance your child's development in a fun and motivating way. Some of the most important years in a child's development are between the ages of 4 and 6. Curriculum focuses on improving pre-school aged children's basic listening, social, and motor skills. Our instructors work on: focus, team work, control, balance, memory, discipline, fitness, coordination, and respect. Class is limited to 6 students.

Registration deadline: Four days before class

AGES	DATE	TIME	COST	ACTIVITY #
4 - 6	Wed April 6 – May 25	5:15 – 5:45pm	\$68; \$60 SV Res	210234-01
4 - 6	Wed April 6 – May 25	5:45 – 6:15pm	\$68; \$60 SV Res	210234-02
4 - 6	Fri April 8 – May 27	5:15 – 5:45pm	\$68; \$60 SV Res	210234-03
4 - 6	Fri, April 8 – May 27	5:45 – 6:15pm	\$68; \$60 SV Res	210234-04



# Youth Sports



## TUMBLING

Discover the sport of tumbling in a positive, educational atmosphere. Participants will learn basic skills on floor, balance beam, bars, and vault. Due to space limitations there is no observation area for parents; parents are invited to observe the final class.

**Registration deadline:** March 18

Saturdays, March 26 – May 14

AGES	CLASS	TIME	COST	ACTIVITY #
2 - 3	Toddler & parent*	9:45 – 10:30 am	\$100; \$90 SV Res	280101-01
2 - 3	Toddler & parent*	10:45 – 11:30 am	\$100; \$90 SV Res	280101-02
3 - 4	Beginner	11:45 am – 12:30 pm	\$100; \$90 SV Res	280102-01
4 - 5	Advanced beginner	12:45 – 1:30 pm	\$100; \$90 SV Res	280103-01
5 - 8	Intermediate	1:45 – 2:30 pm	\$100; \$90 SV Res	280104-01

\*Parent participation and support are required as part of this class. Please only send one adult with child.



## GREEN AND WHITE GIRLS VOLLEYBALL CAMP

Come join local high school coach Tom Weko for a great two weeks of learning the game of volleyball. Players will be grouped by grade and playing ability with a maximum 8:1 player to coach ratio. Fundamental skills will be taught based on age and ability. Current high school as well as former and current college players will help provide instruction each day. Contests and games will be held daily.

Participants should bring knee pads, wide wrist bands (optional), water bottle and a great attitude. Participants will receive a t-shirt.

**Registration deadline:** June 8

GRADE (2022-23 SCHOOL YEAR)	DATE	TIME	LOCATION	COST	ACTIVITY #
3 – 6	Mon – Thurs June 13 – 16 & 20 – 23	8:30 – 10 am	MVHS	\$125	390903-01
7 – 9	Mon – Thurs June 13 -16 & 20 – 23	10 am - noon	MVHS	\$125	390903-02





## TENNIS LESSONS PRIVATE & SEMI-PRIVATE TENNIS LESSONS

Personalized high-quality tennis instruction for players who want to improve their court game

Our instructors will help you work on your ground strokes, serves, volleys, lobs, and smashes in an individual setting

This program offers one-on-one tennis instruction for the casual or avid tennis player

Semi-private lessons are for two participants of equivalent ability

Participants must enroll with a partner for semi-private lessons. Each participant pays registration fee.

TYPE	TIME	COST	ACTIVITY #
Individual, private lesson	5 lessons – 60 minutes	\$190; \$180 SV Res	290602-01
Semi-private lesson	5 lessons – 60 minutes	\$110; \$100 SV Res	290603-01

### Group Tennis Lessons

#### Pee Wees | Ages 5 to 7

Includes lessons on the basics of tennis. Low compression tennis balls provided. Participants should bring a junior sized racquet.

#### Beginners | Ages 7 to 11

For players with little or no tennis experience. Instruction focuses on grip, rules, and fundamental strokes.

#### Advanced beginners | Ages 9 to 11

Perfect for the player who has taken lessons, but needs stroke and technique improvement. Instruction focuses on stroke consistency and introduces new strokes.

#### Intermediate | Ages 11 to 14

For players with dependable strokes who have completed an advanced beginner class. Instruction focuses on court coverage, game strategy, stroke use, and much more.

Registration deadline: April 18



LEVEL	DATE & TIME	COST	ACTIVITY #
Pee Wees	Sat April 23 – May 21 10 - 10:45 am	\$74; \$64 SV Res	290606-01
Beginners	Sat April 23 – May 21 11 – 11:45 am	\$74; \$64 SV Res	290607-01
Advanced Beginners	Sat April 23 – May 21 Noon - 12:45 pm	\$74; \$64 SV Res	290608-01
Intermediate	Sat April 23 – May 21 1 - 1:45 pm	\$74; \$64 SV Res	290609-01



# Youth Sports



## AFTER-SCHOOL SPORTS

Instructors provide fun games and drills for participants to learn the fundamentals. Participants should bring their desire to learn and have fun!

**Registration deadline:** two days before class start

### Basketball

Location: Island Lake Elementary

GRADES	DATE & TIME	COST	ACTIVITY #
1 - 5	Tues March 22 – May 3 4:05 - 5:05 pm	\$55 per participant	290403-01

Location: Turtle Lake Elementary

GRADES	DATE & TIME	COST	ACTIVITY #
1 - 5	Tues March 22 – May 3 4:05 - 5:05 pm	\$55 per participant	290403-02

### Soccer

Location: Island Lake Elementary

GRADES	DATE & TIME	COST	ACTIVITY #
1 - 5	Thurs March 24 – April 28 4:05 - 5:05 pm	\$55 per participant	290406-01

Location: Turtle Lake Elementary

GRADES	DATE & TIME	COST	ACTIVITY #
1 - 5	Thurs March 24 – April 28 4:05 - 5:05 pm	\$55 per participant	290406-02

## MINI KICKERS SOCCER

This program teaches fundamental skills and each session ends with small side scrimmages. Small group sizes provide a fun and active environment. Age appropriate equipment is used. This class is taught by John Swallen.

**Registration deadline:** March 4

Location: Community Center Gym

GRADES	DATE & TIME	COST	ACTIVITY #
3 - 5	Sat, March 26 – April 30: 9 - 9:30 am	\$79; \$74 SV Res	290801-01
3 - 5	Sat, March 26 – April 30 9:35 - 10:05 am	\$79; \$74 SV Res	290801-02
3 - 5	Sat, March 26 – April 30 10:10 - 10:40 am	\$79; \$74 SV Res	290801-03



## TGA GOLF

TGA golf brings the golf course to your student, making it easy to learn and play golf in a fun and safe environment. Instructors help students develop golf skills and knowledge, while teaching valuable life lessons like honesty and sportsmanship.

**Registration deadline:** two days before class

Location: Island Lake Elementary

GRADES	DATE & TIME	COST	ACTIVITY #
1 - 5	Mon, March 21 – April 25 4:05 - 5:05 pm	\$117 per participant	290910-01







# Youth Sports

Our leagues are held in collaboration with Arden Hills, Roseville, New Brighton, and Fridley. Practice and game times will be determined after teams are formed and depend on the coach's availability. Volunteer coaches will contact participants with team and schedule information 1-2 weeks before league start.

## SUMMER CO-REC T-BALL & BASEBALL LEAGUES

Registration deadline: April 22 (\$20 late fee after April 23)

- Learn basic skills as well as teamwork, good sportsmanship, and more
- Games are umpired by coaches
- Little sluggers and Sluggers league will use both a pitching machine and coach's pitch
- Players will receive a t-shirt and cap
- Mini-sluggers leagues will use a pitching machine

LEAGUE/ AGE/GRADE (2022-23 SCHOOL YEAR)	DAY	DATE	COST	ACTIVITY #	
Tiny Sluggers T-Ball	Ages 3 - 4	Wed	June 1 – July 20	\$66	390101-01
Mini Sluggers T-Ball	Ages 5 – 6	Mon	June 6 – July 18	\$66	390101-02
Little Sluggers	Grades 1 - 2	Tues & Thurs	May 31 – July 21	\$76	390102-01
Sluggers	Grades 3 - 4	Mon & Wed	June 1 – July 20	\$76	390102-02

## REVSports - BASKETBALL

This program teaches fundamental skills, fun games and small side scrimmages. Small group sizes are used for an active environment.

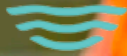
Registration deadline: April 15

Location: Community center

AGES	DATE & TIME	COST	ACTIVITY #
3 - 4	Mon, April 18 – May 16 5 – 5:25 pm	\$69; \$64 SV Res	290915-01
4 - 6	Mon, April 18 – May 16 5:30 – 6:10 pm	\$69; \$64 SV Res	290915-02
4 - 6	Mon, April 18 – May 16 6:15 – 6:55 pm	\$69; \$64 SV Res	290915-03
7 - 8	Mon, April 18 – May 16 7 – 7:40 pm	\$69; \$64 SV Res	290915-04



# Youth Sports



Our leagues are held in collaboration with Arden Hills, Roseville, New Brighton, and Fridley. Practice and game times will be determined after teams are formed and depend on the coach's availability. Volunteer coaches will contact participants with team and schedule information 1-2 weeks before league start.



## SUMMER CO-REC SOCCER LEAGUES

Registration deadline: April 22 (\$20 late fee after April 23)

- Learn the basic skills and fundamentals of soccer
- All players must wear shin guards but cleats are not required
- Players will receive a t-shirt

LEAGUE/ AGE/GRADE (2022-23 SCHOOL YEAR)	DAY	DATE	COST	ACTIVITY #
Mini Mites	Mon	June 6 – July 18	\$66	390201-01
Mites	Mon & Wed	May 30 – July 20	\$66	390201-02
Squirts	Tues & Thurs	June 1 – July 21	\$76	390201-03
Pee Wee	Mon & Wed	June 1 – July 20	\$76	390201-04

### VOLUNTEER COACHES ARE NEEDED!

**SOCCER COACHES MEETING** MAY 17 AT 6:30 PM

**BASEBALL COACHES MEETING** MAY 18 AT 6:30 PM

**T-BALL COACHES MEETING** MAY 19 AT 6:30 PM

Coaches meetings will be held at the community center.

Practices and games held in various parks in Shoreview or neighboring cities.

A virtual meeting will be held for all cities' coaches to go over rules; details will be sent by email.

Benefits of volunteer coaching:

- Give back to the community
- Provide youth with fun experience
- 50% refund of registration fee

Important information:

Coach will contact participants one week prior to start. Detailed schedule given out at first practice. Teammate requests can be made at registration.

Please contact parks & rec at 651-490-4750 with questions.







# JOIN OUR TEAM

Part-time, flexible hours,  
free community center membership

## ADVENTURE QUEST PLAYGROUND INSTRUCTORS

\$10.50-14/hour June - August  
Lead kids ages 3-11 in summer playground events, sports, crafts, songs, art and special events.

## CHILD CARE ATTENDANT

\$10.50-12/hour  
Provide care for children 6 months to 8 years in our drop-off center. Exp. with preschoolers preferred.

## FITNESS-WATER EX INSTRUCTOR

\$16-23/hour  
Develop and teach water exercise classes to a variety of groups. Previous water ex teaching experience required.

## GROUP FITNESS INSTRUCTOR

\$16-23/hour  
Seeking certified instructors to teach cardio and strength, kettlebell.

## GUEST SERVICE/MEMBERSHIPS

\$12.25-13.75/hour  
Answer questions, give tours, room set-up, address guest issues, provide backup at desk and cafe.

## GYMNASTICS/TUMBLING INSTRUCTORS

\$11-12/hour  
Teach beginning to intermediate level gymnastics to kids ages 3 through 8. No experience required.

## LIFEGUARDS

\$12.50-15/hour (Up to \$20/hr for certain shifts)  
No experience required. Free training is provided through Ellis Certification. Must be at least 15 years old.

## MANAGER ON DUTY

\$16.25-18/hour  
Coordinate daily activities, supervise staff, assist guests, follow safety/security procedures.

## PERSONAL TRAINERS

\$19-23/hour  
Nationally certified trainers provide personalized workouts that focus on general fitness & sport-specific conditioning.

## POOL COORDINATOR

\$15-17/hour  
Coordinate activities and operations, supervise/train staff, schedule shifts, carry out policies, maintain systems.

## SEASONAL MAINTENANCE WORKERS

\$12-16/hour  
Parks, streets and utilities are hiring full-time summer help to perform general labor.

## SERVICE DESK

\$11.25-12.25/hour  
Help guests on the phone and in-person, operate cash register, log membership information, assist cafe staff.

## SPECIAL EVENT STAFF

\$10.50-12/hour  
Help host our Egg Hunt, Kids Garage Sale, etc. Duties include decorating & clean up.

## SPORTS INSTRUCTORS

\$12-14.50/hour  
Lead youth and adults in a variety of sports activities. Sports background required.

## SUMMER DISCOVERY COORDINATOR

\$15-17/hour May - August  
Oversee summer childcare program. Develop programs, supervise staff and communicate with parents.

## SUMMER DISCOVERY INSTRUCTORS

\$11.50-14.75/hour June - August  
Supervise kids in grades K-6 in our child care program this summer. Plan arts & crafts, sports, field trips

## SWIMMING INSTRUCTORS - PRIVATE LESSONS

\$27-28/hour  
Develop customized swim lessons to fit each individual based on skill level.

## SWIMMING INSTRUCTORS (WE WILL TRAIN)

\$14-17/hour  
No experience required, free training provided. Morning/early evening classes held at the community center.

## TENNIS INSTRUCTORS

\$14.50-16.50 April - August  
Instruct youth and adults in basic to advanced level classes. Past teaching and playing experience desired.

## WATERSLIDE ATTENDANTS

\$10.75-12.25/hour (Up to \$20/hr for certain shifts)  
Control access to water slide entrance, supervise guests and ensure guest safety.


## WAVE CAFE

\$10.75-11.75/hour  
Prepare food, operate cash register, maintain a clean work area and lobby/tables, stock supplies.

Open until filled! For a list of current job opportunities, go to [shoreviewmn.gov/jobs](http://shoreviewmn.gov/jobs)



## February 2022

- 3 7 pm, LC: Bikeways and trails committee
- 7 5 pm, CC: Economic development authority  
7 pm, CC: City council meeting
- 15 7 pm, CC: Planning commission
- 16 EQC Speaker Series
- 21 *President's Day - offices closed* 
- 22 5 pm, CC: City council workshop  
7 pm, CC: City council meeting
- 23 7 pm, CC: Human rights commission
- 28 6:30 pm: Environmental quality committee  
7 pm, CC: Parks and recreation commission

## March 2022

- 3 7 pm, LC: Bikeways and trails committee
- 7 5 pm, CC: Economic development authority  
7 pm, CC: City council meeting
- 15 7:30 am, UC: Economic development commission
- 16 7 pm, CC: EQC speaker series
- 17 7 pm, CC: Public safety committee
- 21 5 pm, CC: City council workshop
- 21 7 pm, CC: City council meeting
- 22 7 pm, CC: Planning commission
- 23 7 pm, CC: Human rights commission
- 28 6:30 pm: Environmental quality committee
- 28 7 pm, CC: Parks and recreation commission

## April 2022

- 4 5 pm, CC: Economic development authority  
7 pm, CC: City council meeting
- 7 7 pm, LC: Bikeways and trails committee
- 18 5 pm, CC: City council workshop  
7 pm, CC: City council meeting
- 19 7:30 am, UC: Economic development commission
- 20 7 pm: EQC speaker series
- 25 6:30 pm: Environmental quality committee
- 25 7 pm, CC: Parks and recreation commission
- 26 7 pm, CC: Planning commission
- 27 7 pm, CC: Human rights commission

## May 2022

- 2 5 pm, CC: Economic development authority  
7 pm, CC: City council meeting
- 5 7 pm, LC: Bikeways and trails committee
- 16 5 pm, CC: City council workshop  
7 pm, CC: City council meeting
- 17 7:30 am, UC: Economic development commission
- 18 7 pm, CC: EQC speaker series
- 19 7 pm, CC: Public safety committee
- 23 6:30 pm: Environmental quality committee  
7 pm, CC: Parks and recreation commission
- 24 7 pm, CC: Planning commission
- 25 7 pm, CC: Human rights commission
- 30 *Memorial Day - offices closed* 

### LOCATION KEY

CC City council chambers  
UC Upper conference room

LC Lower conference room  
 City offices closed





## Outdoor Recreation Areas

		Acres	Ballfields	Basketball Court	Football	Skating Rink	Paths	Pickleball	Tennis	Picnic Area	Playground	Shelter	Soccer	Circuit Training
Bobby Theisen Park	3575 Vivian Avenue	15		1	✓	✓	✓	6	2			1	✓	
Bucher Park	5900 Mackubin Street	25	2	1	✓	✓	✓		2	✓	✓	1	✓	✓
Heritage Park	1170 Lepak Court	3												
Lake Judy Park	900 Tiller Lane	5		½			✓			✓	✓			
McCullough Park	955 County Rd I	75	2	1	✓	✓	✓		2	✓	✓	1	✓	
Ponds Park	190 Sherwood Road	1					✓			✓	✓			
Rice Creek Fields	5880 Rice Creek Pkwy	10	4				✓			✓	✓			
Shamrock Park	5623 Snelling Avenue	23	2	1	✓	✓	✓		2	✓	✓	1	✓	
Shoreview Commons	4580 North Victoria	40		1	✓	✓	✓	2	2	✓	✓	1	✓	
Sitzer Park	4344 Hodgson Road	8	2	1		✓	✓		2	✓	✓	1		
Wilson Park	815 County Road F	13	2	1		✓	✓			✓	✓			

The following are operated by Ramsey County Parks & Recreation.

651.748.2500

[ramseycounty.us/parks](http://ramseycounty.us/parks)

		Acres	Boat Ramp	X-Country Skiing	Fishing	Hiking Trails	Hockey Rink	Golf Course	Paths	Picnic Area	Playground	Shelter	Swimming
Island Lake Cty Park	3611 Victoria Street	167	✓		✓			✓	✓	✓	✓	✓	
Lake Owasso Cty Park	370 N. Owasso Blvd.	9	✓		✓				✓	✓	✓	✓	✓
Shoreview Ice Arena	877 Highway 96						✓						
Snail Lake Regional Park	580 Lake Blvd.	400	✓	✓	✓	✓			✓	✓	✓	✓	✓
Turtle Lake Cty Park	4979 Hodgson Road	9	✓		✓					✓	✓	✓	✓



For indoor pickleball and swimming visit the Shoreview Community Center.





City of Shoreview  
4600 Victoria Street North  
Shoreview MN 55126

Presorted Standard  
U.S. POSTAGE  
PAID  
TWIN CITIES, MN  
PERMIT NO. 5606

\*\*\*\*\*ECRWSS\*\*\*\*\*  
POSTAL CUSTOMER

12th annual

# Taste of Shoreview

Thursday, April 21  
5 - 8 pm

new  
date

 **food, wine,  
& beer tasting**

Help support the 2022 Slice of  
Shoreview fireworks on July 22 & 23  
at Island Lake County Park!

Tickets: \$25 each or 2 for \$45  
Buy your tickets online:

**[sliceofshoreview.com](https://sliceofshoreview.com)**



Photo by Jim Radford