



# CHAPTER 10 PARKS & OPEN SPACE

## WHAT YOU WILL FIND IN THIS CHAPTER

- » Existing Parks & Open Space
- » Analysis of Current & Future Needs
- » Goals, Policies, & Recommended Actions

Parks and Open Space are a key asset to the community and contribute to the quality of life residents experience. The parks and open space system is the result of proactive planning by the City, County and Metropolitan Council. The system provides residents a variety of active and passive recreational opportunities, which are enhanced through the City's recreational programming services.

## 10 - PARKS & OPEN SPACE

Parks and Open Space are a key asset to the community and contribute to the quality of life residents experience. The parks and open space system is the result of proactive planning by the City, County and Metropolitan Council. The system provides residents a variety of active and passive recreational opportunities, which are enhanced through the City's recreational programming services.

This section also draws upon several additional studies on specific aspects of parks, open space and recreation programming.

- » The Open Space and Park Land Study, prepared by the Parks and Recreation Commission in 1996, reviewed the inventory of existing open space and vacant undeveloped properties in the City and made recommendations for potential land acquisitions. Some of these acquisitions have taken place; others have been foreclosed by subsequent development, and others remain as future options.
- » The Shoreview Parks Needs Assessment and Improvement Recommendations prepared for Parks and Recreation Commission in 2005, reviewed the existing park system, changing community needs and provides recommendations for each park, along with park revitalization plans.
- » The System Plan for the Ramsey County Parks and Recreation Department, approved in 2006, provides information on site characteristics and development plans for all Ramsey County open space lands and other facilities. Amendments have been made to the plan since 2006 and Ramsey County is currently working on a full update.

This chapter of the Comprehensive Plan:

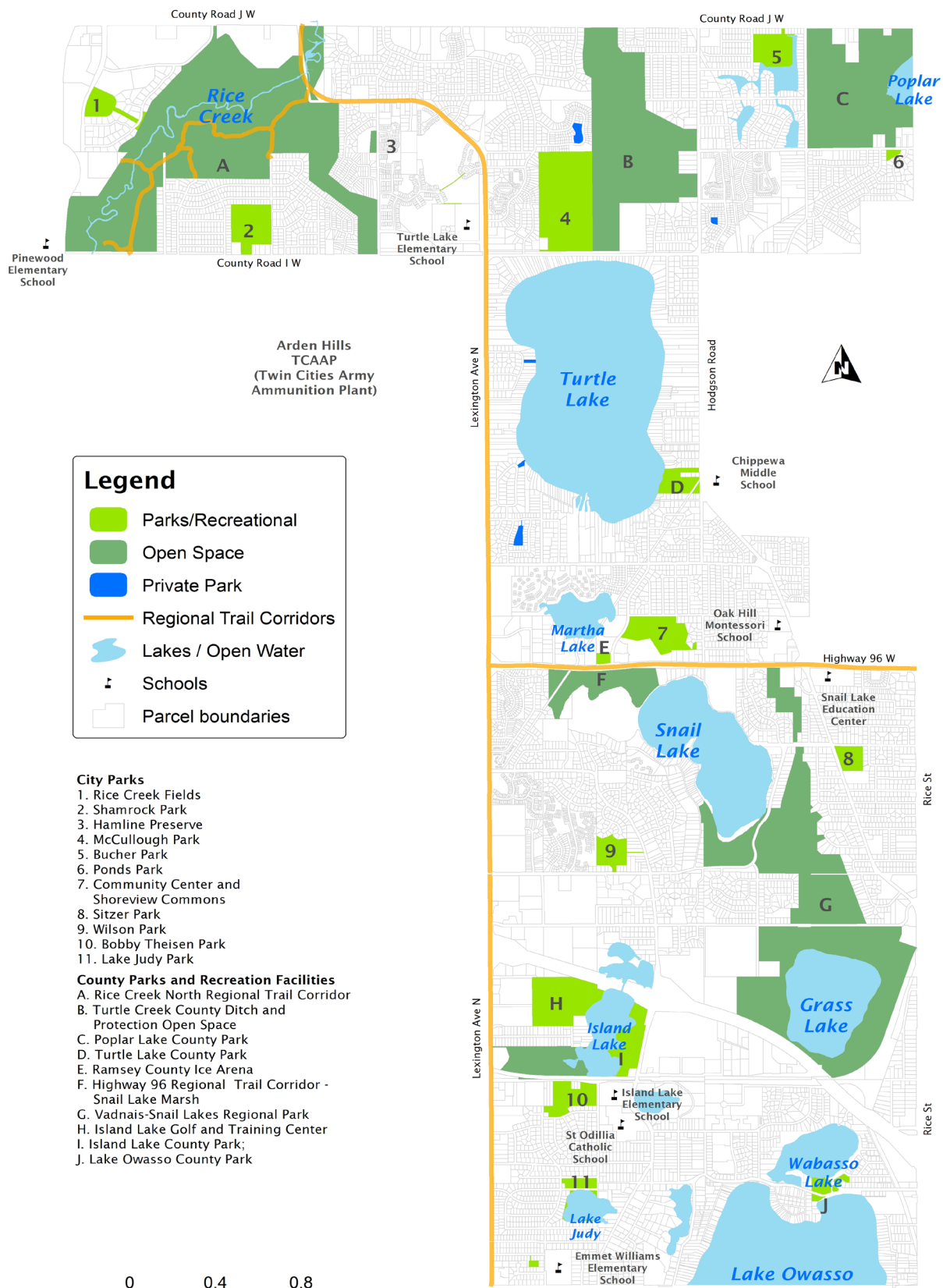
- » Examines the existing parks and open space within the City.
- » Provides an analysis of how well these resources will meet City residents' current and future needs.
- » Establishes goals, policies, and recommended actions for future expansions and improvements to City parks.

### EXISTING PARKS AND OPEN SPACE SYSTEM

Shoreview's park and open space system consists of a broad range of facilities including City parks, Ramsey County parks and open space, other county-owned facilities, and school recreational facilities. A total of about 1,400 acres, or almost 18 percent of the City's land area, consists of parkland and publicly owned open space. See **Map 10.1** for park and open space locations.

The City has a long history of partnership with Ramsey County and the Mounds View and Roseville school districts to improve and manage county and school facilities for shared public use. These facilities should be considered as components of a comprehensive park, recreation, and open space system serving City residents and the general public. These recreation facilities available in City and County parks are further described in **Figure 10.1**. Parks and open space in the City are classified in accordance with their ownership and function.

# Map 10.1 Shoreview Parks and Open Space



**Legend**

- Parks/Recreational
- Open Space
- Private Park
- Regional Trail Corridors
- Lakes / Open Water
- Schools
- Parcel boundaries

- City Parks**
1. Rice Creek Fields
  2. Shamrock Park
  3. Hamline Preserve
  4. McCullough Park
  5. Bucher Park
  6. Ponds Park
  7. Community Center and Shoreview Commons
  8. Sitzler Park
  9. Wilson Park
  10. Bobby Theisen Park
  11. Lake Judy Park
- County Parks and Recreation Facilities**
- A. Rice Creek North Regional Trail Corridor
  - B. Turtle Creek County Ditch and Protection Open Space
  - C. Poplar Lake County Park
  - D. Turtle Lake County Park
  - E. Ramsey County Ice Arena
  - F. Highway 96 Regional Trail Corridor - Snail Lake Marsh
  - G. Vadnais-Snail Lakes Regional Park
  - H. Island Lake Golf and Training Center
  - I. Island Lake County Park;
  - J. Lake Owasso County Park

Figure 10.1 City Parks and County Parks

Shoreview Recreation Areas		Acres	Ballfields	Boat Ramp	X-Country Skiing	Fishing	Football/Soccer	Hardcourt Area	Hiking Trails	Hockey Rinks	Golf Course	Paths	Picnic Areas	Playground Eq.	Shelter	Skating	Soccer	Swimming	Tennis Courts	Pickleball Courts	Volleyball	
City Parks	<b>Bobby Theisen Park</b> 3575 Vivian Ave	15				•	•			•		•			•	•	•		•	•		
	<b>Bucher Park</b> 5900 Mackubin St.	25	2				•	•		•		•	•	•	•	•	•			•		
	<b>Chippewa Middle School</b> 5000 Hodgson Road	3					•	•						•			•	•	•			
	<b>Emmet Williams Elem. School</b> 955 County Road D	2												•								
	<b>Island Lake Elem. School</b> 3555 N. Victoria St.	2					•							•							•	
	<b>Lake Judy Park</b> 900 Tillerun	5										•	•	•	•							
	<b>McCullough Park</b> 915 County Road I	75	2				•	•		•		•	•	•	•	•	•			•		
	<b>Ponds Park</b> 190 Sherwood Road	1										•	•	•								
	<b>Rice Creek Fields</b> 5880 Rice Creek Parkway	10	4									•	•	•	•							
	<b>Shamrock Park</b> 5623 Snelling Ave	23	2				•	•		•		•	•	•	•	•	•			•		
	<b>Shoreview Commons and Community Center</b> 4650 North Victoria	40	2				•	•		•		•	•	•	•	•	•	•	•	•	•	•
	<b>Sitzer Park</b> 4344 Hodgson Road	8	2					•		•		•	•	•	•	•				•		
	<b>Snail Lake Elementary School</b> 350 Hwy 96	2						•						•								
	<b>Turtle Lake Elementary School</b> 1141 Lepak Court	2					•	•						•								
<b>Wilson Park</b> 815 County Road F	13	2					•		•		•		•	•	•					•		
County Parks	<b>Island Lake County Park</b> 3611 Victoria St.	167		•		•							•	•	•							
	<b>Island Lake Golf Course</b> 1000 Red Fox Road										•											
	<b>Lake Owasso County Park</b> 370 N. Owasso Blvd.	9		•		•							•	•	•				•			
	<b>Shoreview Ice Arena</b> 877 Hwy 96									•												
	<b>Snail Lake Regional Park</b> 580 Snail Lake Blvd	400		•	•	•		•				•	•	•	•				•		•	
<b>Turtle Lake County Park</b> 4979 Hodgson Road	9	1	•		•							•	•	•				•				

### City Parks and Facilities

Community Parks are typically larger park areas that serve the entire community or region. The only City owned community park, Commons Park, is located in central Shoreview. The other community parks located in Shoreview are County owned including Vadnais Snail Lake Regional Park and Island Lake County Park. The County also owns two smaller parks, Lake Owasso Park and Turtle Lake Park that include beach areas and boat launches. The County also owns larger open space areas including the Rice Creek Open Space, Poplar Lake Open Space, and Turtle Creek Open Space.

Neighborhood parks represent the basic core of the City's park system and are generally designed to serve a residential area within approximately a half-mile radius, sometimes in conjunction with an elementary school. Almost all neighborhood parks have off-street trails that provide connections to the surrounding neighborhoods. The majority of Shoreview's city parks are considered neighborhood parks and typically include the same group of facilities including: ball fields, a hockey and general skating rink, soccer field, tennis courts, playground equipment, off-street trails, and a park shelter building. Many of the City's neighborhood parks also serve a larger community function since baseball fields, softball fields, and soccer/lacrosse fields are used for both City recreation programs, youth athletic associations, and the school district.

Mini-parks, also known as play lots, are smaller parks, typically  $\frac{1}{4}$  to 2 acres in size, designed to serve a concentrated or limited population. Ponds Park, one acre in size, is a mini-park that serves the nearby Ponds Park neighborhood. Facilities consist of a playground and picnic area.

### Shoreview Commons/Community Center

The campus of Shoreview Commons Park is located in the heart of the City at Victoria Street and County Highway 96 and includes the Shoreview Community Center, City Hall, Ramsey County Library, Mounds View School District Administration and a Ramsey County Ice Arena. All of these community facilities are surrounded by abundant views of open spaces, lakes, wetlands, and are well served by an extensive trail system.

Commons Park was acquired by the city in the mid-1970s as part of the City's development of a comprehensive park system to serve the community. Shoreview Commons was established to serve as the "central park" area of the city. Since the original purchase, a 40-acre multi-purpose recreation area has been developed in the park.

In 1990, the Shoreview Community Center opened as one of the first facilities of its kind, and has become the community-gathering place for cultural, recreational, and social activities for Shoreview and the surrounding area. The Shoreview Community Center is an indoor park that includes the Tropics Indoor Water Park, indoor track, fitness rooms, gymnasium, meeting rooms, and banquet facility. This space was eventually "outgrown" and in 2003 the Community Center was expanded to include a much larger fitness center, additional group fitness rooms, a meeting room, and a second banquet room and catering kitchen. In 2007, the Tropical Adventure Indoor Playground area was constructed within the Community Center.

## 10 - PARKS & OPEN SPACE

In the fall of 2017, a second expansion to the Community Center was started. The expansion plan included a two level 15,000 square foot expansion adjacent to the gymnasium. The lower-level expansion space resulted in a larger Wave Café seating area, created a new entrance into the indoor playground and provided a larger playground including a greatly improved toddler play area. The Tropical Adventure Indoor Playground doubled in size and has many new amenities including a large toddler area and improved seating for adults. The lower level also included a series of four group fitness rooms/studios that are used for our extensive group fitness classes and youth activities. The upper level of this expansion included four new multi-purpose meeting and activity rooms that are accessed from a new hallway off of the Fireside Lounge. These rooms are used for a variety of activities, including the City's full-day summer childcare program, expanded art and cultural programs for both youth and adults, as well as general meeting space. There will also be a new outdoor deck accessible from the Fireside Lounge.

The project also included a nearly 8,000 square foot expansion of the Tropics Indoor Waterpark. The Waterpark expansion provided a new zero depth shallow water splash pool with a major aquatic play structure that has numerous slides, water sprays and other interactive features. Additionally, the men's and women's locker rooms were renovated and the number of family changing rooms increased from two to seven.

During 2016, the City Council, Park and Recreation Commission and city staff worked to develop an updated Master Plan for the Shoreview Commons area. Although the new Shoreview Commons Master Plan has not been formally adopted by the Council, it incorporates a variety of suggested improvements to continue to enhance the Commons area as the "Central Park" of Shoreview. Some of the elements of the updated Master Plan include:

- » Addition of a large destination playground as a featured anchor to the active park area including slides and swings built into the existing hillside near the intersection of Victoria Street and the main entrance to the Shoreview Community Center (current softball field area)
- » Addition of a park building with bathrooms and concessions as a focal point to the active area near the destination playground, new plaza style skate park, and possible splash pad
- » Creation of a plaza and large formal hard-edged decorative pond on the backside of the pavilion that can also be used for winter skating as the key feature in an area that would include a wedding venue, formal gardens, outdoor fireplace areas, walkways, and possibly a Veteran's Memorial.
- » Development of a landscaped median/walkway between the Community Center and the new County library.

### Local Trails

The local trail system serves the community by connecting neighborhoods with local destinations. This system consists of off-street trails, sidewalks, and neighborhood trails, and is discussed in depth in "CHAPTER 5".

### Regional Parks and Open Space

Much of the open space and parkland in Shoreview is owned and managed by Ramsey County. Ramsey County is one of ten implementing agencies for the regional park system in the Twin Cities Metropolitan Area. Implementing agencies own and operate the parks and trails; the Metropolitan Council, with recommendations from the Metropolitan Parks and Open Space Commission, approves master plans, develops policies, prepares the capital improvement program and provides funding to finance improvements. Regional recreational facilities are classified as regional parks, park reserves, special recreation features and regional trails.

The Metropolitan Council estimated the use of these regional facilities in their study, Annual Use Estimate of the Metropolitan Regional Park System for 2016. An estimated 47.8 million visits were made to the Regional Parks System in 2016. Annual visits increased 1.1% from 2015 to 2016. Since 2006, annual visits have increased by over 11 million. During that same time frame, many new regional parks and trails were added to the Regional Parks System.

### Regional Parks

Regional parks are defined by the Metropolitan Council as areas “of natural or ornamental quality for nature-oriented outdoor recreation such as picnicking, boating, fishing, swimming, skiing, hiking and camping.” Regional parks are components of the Regional Recreation Open Space System; their official designation requires approval by the Metropolitan Council. A portion of Vadnais-Snail Lake Regional Park is located in Shoreview.

### Vadnais-Snail Lake Regional Park

This Regional Park, 746 acres in size, connects Snail Lake and Grass Lake and includes the St. Paul Water Utility open space in Vadnais Heights. The park currently consists of three segments within Shoreview: Grass Lake (271 acres), Snail Lake Corridor (142 acres) and Snail Lake (30 acres). The three segments of the park are connected by 4.1 miles of trails. The Snail Lake Segment is developed with a picnicking, swimming and boating area, play area and volleyball court. These facilities were expanded and renovated in 1996. The Snail Lake Corridor includes a connecting trail between Highway 96 and Gramsie Road. This trail continues through the otherwise undeveloped Grass Lake Segment to I-694.

The estimated number of visitors in 2016 for this regional park was 574,100 people.

### Regional Trails

Regional trail corridors are intended to provide for recreational travel along linear pathways throughout the metropolitan area. They are selected to follow natural or linear features that have scenic appeal, historical or architectural and development interest while assuring that the trail treadway will have no adverse affect on natural resources. They also pass through or provide access to the regional park system. Two regional trail systems are located within the City.

### Rice Creek North Regional Trail

This trail is located in the northwestern corner of Ramsey County and extends through the Cities of Shoreview, Arden Hills, Mounds View and New Brighton. The trail has a length of 6.2 miles and is part of a 14-mile regional trail corridor that extends from the Chain of Lakes Regional Park Reserve through Long Lake Regional Park then west to the Mississippi River. The corridor segment within Shoreview includes Rice Creek, its floodplain, and additional acreage including 200 acres of former agricultural upland area with scattered wetlands and wooded areas. Rice Creek does have sufficient depth and can accommodate canoeing, however, impediments such as road crossings exist.

Local trails along County Road I, Lexington Avenue and County Road J do provide connections to this trail system. A trailhead parking lot is constructed on County Road I. In addition, there is a 13-acre off-leash dog exercise area south and west of Lexington Avenue that was redone in 2013. The completed improvements for this trail corridor include a canoe launch, larger parking area, seasonal restroom facilities and a trash enclosure. This new trailhead area is accessed off of Lexington Avenue.

In 2016, it is estimated that 112,400 people visited this section of the trail corridor.

### Highway 96 Regional Trail

The 8.5 mile long Highway 96 Regional Trail is located within the Highway 96 right-of-way, extending from Old Highway 8 in New Brighton to Highway 61 in White Bear Lake. This trail is classified as a linking trail and serves as an east-west arterial trail connection connecting northern Ramsey County communities and regional parks including Long Lake Regional Park, the Vadnais-Snail Lakes Regional Park, Birch Lake Regional Trail and Bruce Vento Regional Trail. This regional trail incorporates the 47 acre Snail Lake Marsh area and includes 1000 feet of shoreline on the northwest shore of Snail Lake.

The Metropolitan Council has recommended a boundary adjustment for the Snail Lake Marsh area adjacent to this trail. This adjustment adds Snail Lake Marsh to the Highway 96 Regional Trail to provide area for trail facilities and interpretation. Ramsey County will be preparing a Master Plan amendment to the Highway 96 Regional Trail Master Plan to incorporate this area. Improvements are likely to include an overlook/rest stop area with a self-guided nature interpretation trail. Much of the Snail Lake Marsh area will be managed to maintain its natural character.

In 2016, trail use was estimated at 306,600 visits.

### Lexington Parkway Regional Trail

The Lexington Parkway Regional Trail extends north from the City of St. Paul north to Anoka County. In Shoreview, this trail consists of an existing County trail along Lexington Avenue extending from County Road D to County Road J. The Metropolitan Council's Regional Park System Plan does show that this area is a Regional Trail Search Corridor area. Ramsey County has also expressed the desire to add that section to their Regional Trail inventory. Ramsey County and the City of St. Paul will be preparing a joint Master Plan for this regional trail.



### County Parks

The Ramsey County System Plan defines county parks as “areas of limited size and resource base (generally associated with a significant water recreation resource) that offer a range of related outdoor recreational opportunities for county and metropolitan area residents.”

The following county parks are located in Shoreview:

#### Island Lake County Park

This park consists of three distinct segments: a 22-acre picnic area on the east side of the lake, a 41-acre golf teaching center on the northwest side of the lake, and a 30-acre natural area on the southwest side of the lake.

#### Lake Owasso County Park

This 9-acre park, bisected by North Owasso Boulevard, includes shoreline on both Lake Owasso and Lake Wabasso. The Lake Owasso shoreline is developed with a swimming beach; both lakes offer boat and fishing access.

The park is scheduled for a full redevelopment of the boat launches, shelters, restrooms, beach area and picnic area starting the Summer of 2018. Management of stormwater associated with the parking lots and roadways will be addressed in the redevelopment plan.

#### Poplar Lake County Park

This 430-acre park is located in the northeast corner of Shoreview and in White Bear Township to the east. The section in Shoreview consists largely of wetlands, including the 40-acre Poplar Lake, which is classified as a deep marsh. East of Sherwood Road, in White Bear Township, the County maintains a yard waste-composting site that is considered an interim use until the park is developed.

Developed trails, restrooms and parking are not available, though there are a number of foot paths throughout the park.

#### Turtle Lake County Park

This 11-acre park is located between Turtle Lake and Highway 49. Its facilities consist of a swimming beach, play field, picnic area with play equipment and a boat access. A small 1-acre area east of the boat access is maintained in natural condition.

The park was renovated in 2013 which added an additional 18 parking stalls, amenity upgrades, new bathrooms and a larger picnic structure to accommodate the demand.

### Protected Open Space

Protected Open Space areas are defined as “outstanding landscape amenities, critical natural systems and vulnerable natural resources that contribute to public health, outdoor education, aesthetic enjoyment and ecosystem stability.”

The following protection open space is located in Shoreview:

### Turtle Creek Open Space

The open space site, 187 acres in size, is located between County Roads I and J, just east of McCullough Park. It includes a mile-long segment of a natural drainage corridor between Rice Creek (to the north in Anoka County) and Turtle Lake. The remainder of the site consists of marsh, with the exception of a 20-acre wooded “island.”

No development is currently planned for the site, although trails could potentially be extended from McCullough Park into an island area that is currently inaccessible. The southern tip of the island extends onto private residential property.

### Special-Use Facilities

Special use facilities are areas or facilities that provide intense specialize or single-purpose indoor and/or outdoor recreation activities and require a specific resource base, location, restrictive control and management program above and beyond that associated with other general recreational activities. Two special use facilities are located within the City.

### Ramsey County Ice Arena

Ramsey County operates the Shoreview Ice Arena, located in the Shoreview Commons area, one of nine public ice arenas throughout the county. This arena used to serve as the home ice for the Mounds View High School Boys Hockey team but they have since moved to the Vadnais Sports Center in Vadnais Heights. Currently the arena is used extensively by Mounds View/Irondale Youth Hockey Association. Ramsey County is planning to upgrade the refrigeration system at the rink in the next few years.

The City also participated in the construction of the SuperRink ice-skating facility, a cooperative venture of Ramsey County, adjacent cities and youth hockey associations, located at the National Sports Center site in the City of Blaine. This complex originally provided four Olympic-size ice sheets, but has since been expanded to eight ice sheets.

### Island Lake Golf and Training Center

This center is located in the west portion of Island Lake County Park, south of Interstate 694 and east of Lexington Avenue. The site consists of rolling topography with small ponds and moderate tree cover. The Training Center includes a 1,423-yard, 9-hole par 28 golf course with a driving range, putting course,

clubhouse, maintenance shop and parking area. The County has executed a lease/management agreement with a private operator to operate the Center. Currently, there are no plans for future improvements.

### School Facilities

City residents are served by two public school districts. The first, Independent School District No. 623, Roseville Area Schools, serves that portion of the community south of Arbogast Street/North Owasso Boulevard. The remainder of the City is served by Independent School District 621, Mounds View Public Schools.

The school facilities within these districts provide recreation play equipment and athletic facilities that not only serve the school population but the larger community. The school districts provide athletic facilities for public recreation in a cooperative manner with local governments and youth athletic associations. The ball fields are used by youth athletic associations and city sponsored recreation programs. The City has contributed financially to upgrades to the gyms and playground facilities at both Turtle Lake and Island Lake Elementary Schools. This includes the “Playground for All” at Turtle Lake Elementary school. The City has the right to use the school gyms after school hours. Time is generally shared between the City’s recreational programs and the youth athletic associations.

All of the public schools within the City of Shoreview are elementary schools. In addition, there are two schools adjacent to the City’s boundaries. The recreational facilities provided at the elementary school level are generally suited for the school age population and each of them include playgrounds that are used by students, as well as residents. Pinewood Elementary School (ISD 621) is immediately west of Interstate 35W on County Road I in the City of Mounds View also includes a playground facility. Chippewa Middle School (ISD 621) lies immediately east of Hodgson Road in the City of North Oaks and the gymnasiums and outdoor athletic fields are used by youth athletic associations.

### Private Recreation Facilities

In addition to the public parks, open space and school facilities, there are some private recreation facilities located within the City. Private recreational facilities offer recreational opportunities to members of the organization and, in some cases, to the general public.

The Northwest YMCA, located on Lexington Avenue, provides a variety of recreation facilities to members of the organization and the general public as well, with payment of an admission fee. This facility is approximately 50,000 square feet in size and provides indoor gym rooms, fitness center and an indoor pool. Other recreation facilities are located outside, including a ball field and swimming pool.

St. Odilia School, located on Victoria Street, is a private Catholic elementary school. The recreation facilities provided at the school include play equipment, field areas, including a lighted soccer field, and an indoor gym.

The Union Gospel Mission owns a 17-acre parcel located on the north shore of Snail Lake, which is used as a retreat and camp for participants in their programs. The Union Gospel Mission has stated its

intent to remain on the property indefinitely; however, the City recognizes the redevelopment potential for this parcel due to its location and lake frontage. Any redevelopment of this site should explore the potential of creating a public trail along the shore of Snail Lake.

### Recreation Facilities in Neighboring Communities

On the City's western border is the 2,400-acre Twin City Army Ammunition Plant property (TCAAP). The vast majority of the property is leased to the Minnesota National Guard for the Arden Hills Army Training Site and in recent years the National Guard has constructed two readiness centers on the site along large maintenance center. The Guard is planning to construct a divisional headquarters building and third readiness center on this property within the next two years. Ramsey County has purchased about 500 acres on the far western side of the TCAAP property and has cleaned up the property. The Joint Development Council consisting of representatives from Ramsey County and the City of Arden Hills has selected a master developer for the property. This major new development called Rice Creek Commons will include plans for two parks that will primarily serve the new neighborhoods, and a Town Center park.

In addition, the Rice Creek Corridor located in the northwestern corner of the TCAAP property has been preserved and is managed as part of the Rice Creek North Regional Trail Corridor. A trail connection opened in 2008 that links to trails north of County Road I in Shoreview. This area was further enhanced with the realignment of Rice Creek. A future trail connection through the TCAAP property to Highway 96 in Arden Hills is also planned.

## ANALYSIS OF FUTURE NEEDS

### Open Space and Park Land Study

In 1996, the Parks and Recreation Commission completed the Open Space and Park Land Study reviewing existing open space and parkland within the City and adjacent communities and recommending potential park land/open space acquisitions and financing options.

The Commission identified several goals that are to be considered when considering the acquisition of land for park and open space purposes. These include: providing additional athletic fields, acquiring in-holding properties, and acquiring historically or naturally significant property for outdoor education, natural habitat and buffer/protection. A thorough review of vacant lands, underdeveloped properties and in-holdings was conducted to determine which lands had potential value for park and open space purposes. The study recommended actions the City should pursue to improve the local park and open space system.

### Needs Assessment and Improvement Recommendations, Shoreview Park

The City of Shoreview also completed a needs assessment in 2005 that evaluated existing park facilities

and developed recommendations and park plans identifying improvements needed to meet existing and future needs. The study concluded that Shoreview's park system should be renovated to meet the needs of the baby-boom generation, senior citizens and families with young children. Neighborhood parks should have a mix of passive and active uses and loop trails. Shoreview Commons Park should continue to be used to meet community needs for active recreation and cultural/community gatherings.

Furthermore, the study concluded that the park system is well maintained, in good condition and meets a wide spectrum of recreational needs. Enhancements, however, are needed to the system and include updated park buildings, accessible trails, signature park attractions, entrance and parking area aesthetics and signage, additional indoor facilities, and potentially consolidating ice rink locations. The study also recommended the City review the potential for consolidating buildings and uses when building improvements/replacement improvements are programmed. Also, the City needs to consider emerging recreational/leisure activities in its park planning.

### Active Living

Parks and open space can be developed and managed in a manner that promotes active living and integrates physical activity into daily routines. Research has found that physical inactivity plays a significant role in common chronic diseases including coronary heart disease, stroke, high blood pressure and diabetes. Furthermore, studies have concluded that physical activity improves the quality of life and health. It reduces the risk for developing some chronic diseases by 50%. Research has also found that the presence of parks, trails and greenways promote physical activity among a diversity of groups.

The park and trail system in Shoreview has been designed to provide residents with opportunities to be physically active through the location of parks in or near residential neighborhoods, providing facilities that meet resident needs and trail improvements that connect residential neighborhoods with parks. This park system is supplemented by recreation program activities that further utilize these park facilities.

## GOALS POLICIES AND RECOMMENDED ACTIONS

### Goals

1. To provide park facilities and recreation programs that meet the changing recreational needs of the community.
2. To balance the recreational needs of park users with the need for access to natural areas and protect sensitive environmental resources.
3. To coordinate with other county, school district and neighboring communities in developing a recreational system, including recreation programs, that meet the community's needs.
4. To improve the health of the community and encourage physical activity by providing a park system that is accessible to all residents and includes facilities for active recreation.

## Policies

### General

- A. Parks and the recreation facilities shall be maintained in a manner that emphasizes access, user safety and high quality.
- B. Consider park and open space needs with land use and transportation planning.

### Park Planning

- A. Recreational facilities will be developed to be compatible with surrounding residential neighborhoods and other adjacent land uses.
- B. City parks will be designed and developed to emphasize active recreation, while regional and county open space areas will generally provide opportunities for passive recreation.
- C. A “no-net-loss” policy is hereby adopted in which the City commits to replacing city-owned parkland lost to other uses.
- D. The City will review major development proposals for potential impacts on the park system, and determine the need for additional improvements. In addition, the potential impact and connectivity of developments adjacent to parks and open space land will be reviewed.
- E. Continue to maintain the Shoreview Commons Park area and the Community Center as the focal point in the city for social, cultural and recreational opportunities.

### Accessibility

- A. The City will seek to ensure that all public facilities area accessible to all city residents of all ages, incomes and abilities.
- B. The City will work to ensure that most residents live within a service radius of approximately one half mile from a City park, County park or public school site within the City or an adjacent community. Obstacles to access such as lakes or major roadways may reduce this service radius in some instances. Public improvements, such as trails, can increase the effective service radius in other instances.
- C. Identify parks and other recreational facilities through the use of signage that directs users to park facilities and potential destinations.

### Coordination

- A. The City will work with Ramsey County to plan and implement improvements to County parks and open space areas in order to meet both City recreational needs and County goals.
- B. The City will continue to coordinate trail development with Ramsey County, Anoka County, adjacent municipalities and other governmental agencies.
- C. Participate in local and regional decisions that affect parks and open space within the community.

## Trails and Bikeways

- A. The City will develop its trail system to promote improved connections between neighborhoods and parks, community facilities and commercial areas.
- B. The City may require trail or bikeway connections be provided within new developments or as part of road reconstruction projects.
- C. Trails and bikeways should provide a means of accessing open space and natural areas.
- D. The City shall support the goals, policies and recommended actions for the trail system as stated in Chapter 5, Transportation.

## Actions

### Park and Recreation Facility Maintenance and Improvements

The City is committed to ongoing maintenance and upgrades to its park system and recreation facilities. In 2013, the City created the Community Investment Fund which provides a dedicated funding source for projects that have community wide benefit including parks, trails, and recreation facilities. Any park, recreation facility and trail improvements are programmed in the City's 5-year Capital Improvement Program that is updated on an annual basis. Some of the key park and recreation facility improvements that are currently planned to be funded from the Community Investment Fund between 2018 and 2022 include the Community Center expansion project, Shoreview Commons Master Plan improvements, updates of Shamrock and McCullough Parks and replacement of a City park building.

The City also prepares the Comprehensive Infrastructure Replacement Plan (CHIRP) which identifies major fixed asset replacement projects in the Community Center and park system that will be necessary during the next 50 years. The City has a dedicated tax levy and fund (General Fixed Asset Revolving Fund) that finances the replacement of these assets. This fund is used to finance projects from replacement of playground systems, parking lots, and tennis courts in City parks to the replacement of the mechanical systems, interior furnishings, and the waterslide in the Tropics Indoor Water Park.

The City's commitment to continual park system updates and improvements is demonstrated by the creation of the Community Investment Fund and annual tax levies for the Fixed Asset Revolving Fund. Funds are also leveraged through the public use recreational dedication fee which requires developers to contribute to the City a cash equivalency based on the market value of the land. A dedication of land may be contributed in lieu of the fee if the City Council determine that there is a need and the land is suitable for recreation purposes.

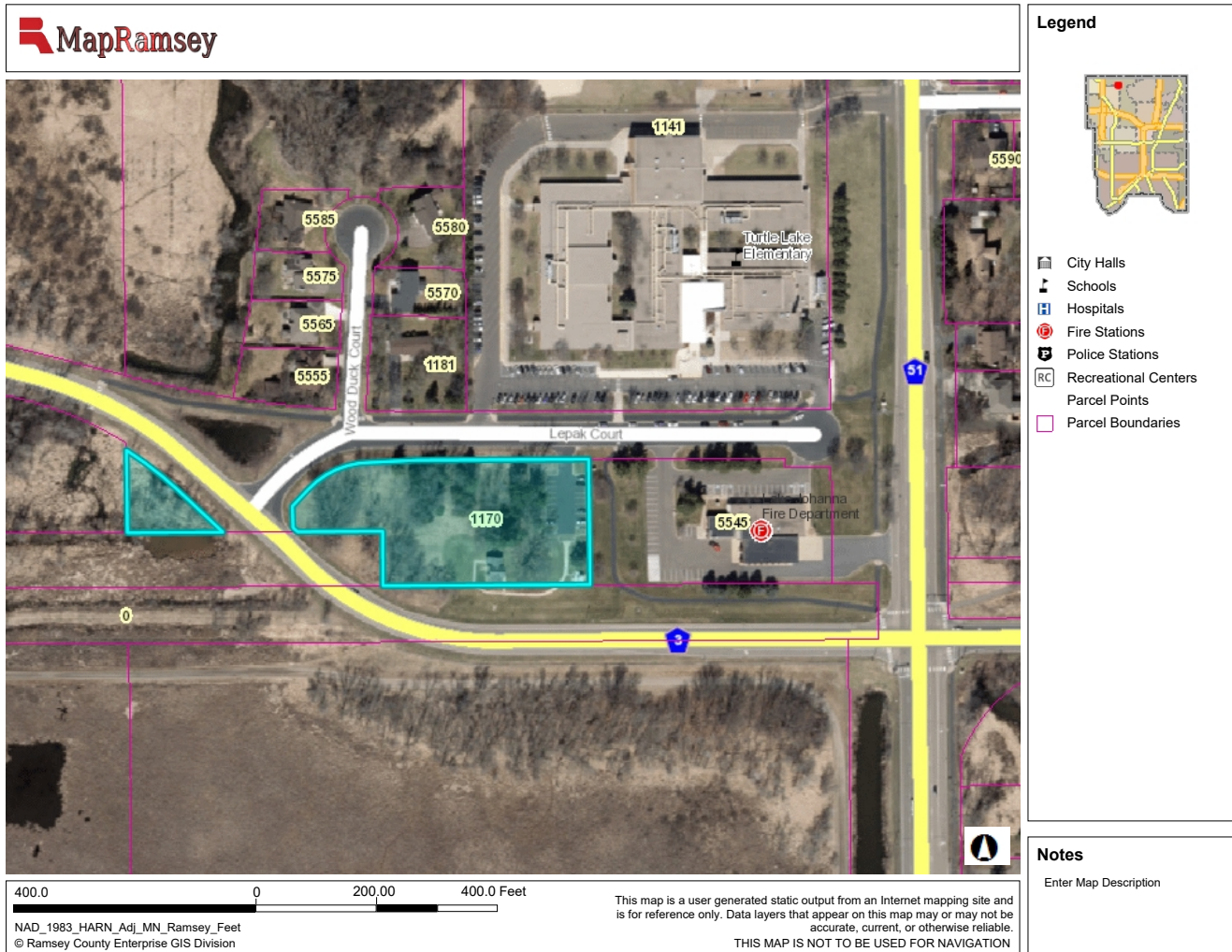
### Heritage Park

With the recent closure of the Housing Resource Center, the City has explored ways to re-use the historic Lepak-Larson House and the surrounding properties. The City Council has encouraged evaluating the feasibility of creating a park at the site. The most recent proposal designates the property as Heritage Park as it is home to two historic buildings. This would convert that home and area into a

# 10 - PARKS & OPEN SPACE

passive park-like use with a partnership with the Shoreview Historical Society. By designating this property as Heritage Park, there would be opportunities to host two to three community events on the grounds throughout the year. The City and Historical Society could partner with other organizations to host events such as picnics, ice cream socials, concerts, or art shows. At this time, this would not include any equipment, fields and/or structures.

## Map 10.2 Heritage Park





## Park Acquisition and System Expansion

In addition, the City will continue to implement the recommendations of the Open Space and Park Lake Study. These recommendations include:

- » Consider updating the previous park studies including the 1996 Open Space and Park Land Study and the 2005 Shoreview Parks Needs Assessment and Improvement Recommendations to examine changing community needs, park facilities and potential land acquisitions. Said study shall address park development in fully developed communities, including looking at methods to expand the park system to improve accessibility for neighborhoods that may lack connections to the existing park system.
- » **Shoreview Commons Park In-Holdings.** Residential lots along the north side of Highway 96 east of the Community Center should be considered for acquisition when there is an identified need relating to the expansion of the Community Center or Commons Park Enhancements. This recommendation is consistent with the Core Area Framework Plan.

**Map 10.3 Shoreview Commons Park In-Holdings**



## 10 - PARKS & OPEN SPACE

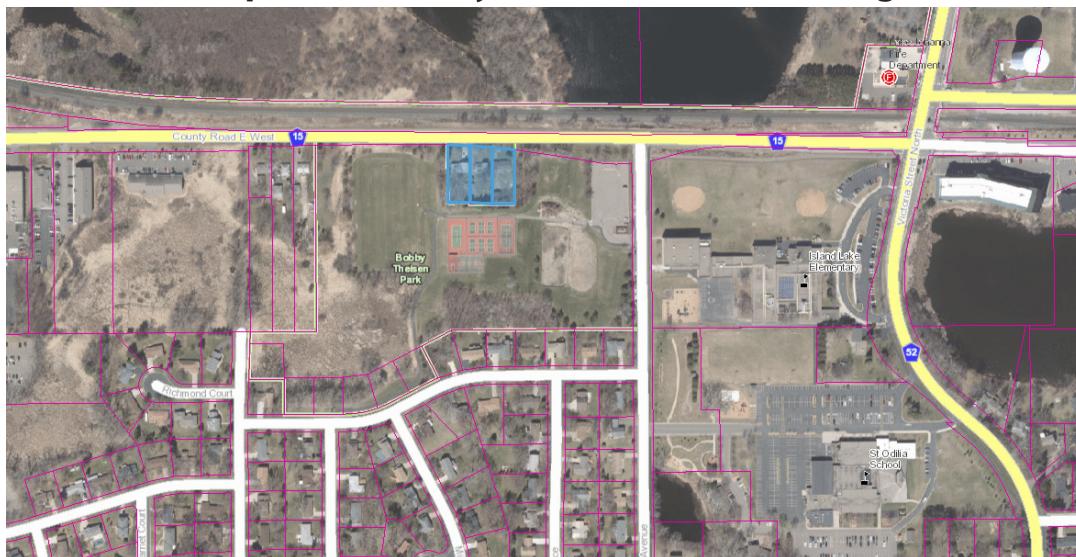
- » **Sitzer Park.** The Church property directly south of Sitzer Park may be a potential expansion opportunity for the future. Although there is not an immediate need, the City may look into purchasing this property in the future if recreational needs dictate.

**Map 10.4 Sitzer Park Expansion Opportunity**



- » **Bobby Theisen Park In-Holdings.** Three single-family homes on County Road E are surrounded by the park property. Although there is not an immediate need, the City may purchase these properties in the future if recreational needs dictate. This acquisition would enable the City to complete the park boundary and expand the recreational area.

**Map 10.5 Bobby Theisen Park In-Holdings**



- » **Gospel Hill Mission Property.** When an opportunity arises, consider the acquisition of easements along Snail Lake for a public trail with access to the Highway 96 Regional Trail.
- » **United Tower Property.** This property lies adjacent to Grass Lake in the Vadnais Snail Lake Regional Park. At least a portion of this property should be considered for incorporation into Vadnais Snail Lake Regional Park in the event that the tower use is ever eliminated.
- » **Outdoor Educational Classroom.** The abundance of open space throughout the community provides an opportunity to create an outdoor environmental learning center for youth, which could be used to teach children about nature and environmental issues. The City may work with both the Mounds View School District and Roseville School District and Ramsey County to further explore this idea.

### Cooperative Parks Planning Efforts

The City will continue to participate with Ramsey County and the school districts in any multi-jurisdictional park planning efforts when opportunities become available to meet the recreation and open space needs of the community.

### Parks and Recreation Programming

The City's parks and recreation program will continue to respond to the changing demographics and needs of the community. This includes recreation programs held at the Community Center and throughout the City's park system.